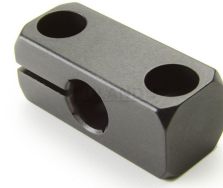
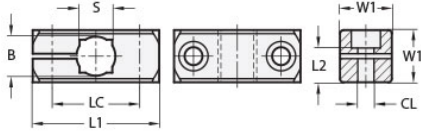




MT10-CC1W-M5-AN

Ruland One-Way Connector Clamp, Thru Hole 10mm, L 38mm, Black Anodized Aluminum



Description

Ruland MT10-CC1W-M5-AN is a one-way base connector with a 38mm base diameter, 10mm round thru holes, 8mm square thru hole, and M5 clamp screw. It is designed to fit with Ruland tubes that begin with M5. MT10-CC1W-M5-AN is aluminum with a black anodized finish and screws are 304 stainless steel for added corrosion resistance when compared to unplated types. This one-way base connector is typically used as a base in support structures for mounting sensors, screens, reflectors, plexiglass machine guards, and other industrial components. It can be permanently installed on extruded aluminum frames, sheet metal, and other surfaces using M5 hardware or the user can opt for portability by using MAGNET-43-27 magnetic base. MT10-CC1W-M5-AN is a cost effective option when compared to two-way bases for users that only require a tube in one orientation. MT10:12-ALK-M5-20 adjustable clamping handles can be used in place of standard hardware if rapid fine repositioning of the tube is required. MT10-CC1W-M5-AN is manufactured by Otto Ganter, inventoried by Ruland, and RoHS3 compliant.

Product Specifications

Thru Hole Diameter B	10 mm	Thru Hole Tolerance	+0.09/-0 mm
Square Thru Hole S	8 mm	Center To Center LC	27 mm
Width & Height W1	16 mm	Overall Length L1	38 mm
Mounting Screw SC	M5	Clamp Screw CL	M5
Screw Length L2	10.5 mm	Weight (lbs)	0.039700
Material Specification	Anodized Aluminum	Manufacturer	JW Winco/ Otto Ganter
UPC	634529231265	Country of Origin	Germany
Tariff Code	7609.00.0000	UNSPC	31162908