

THIS DRAWING IS UNPUBLISHED.

RELEASED FOR PUBLICATION

2002

LOC 1

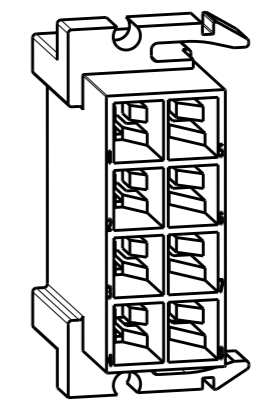
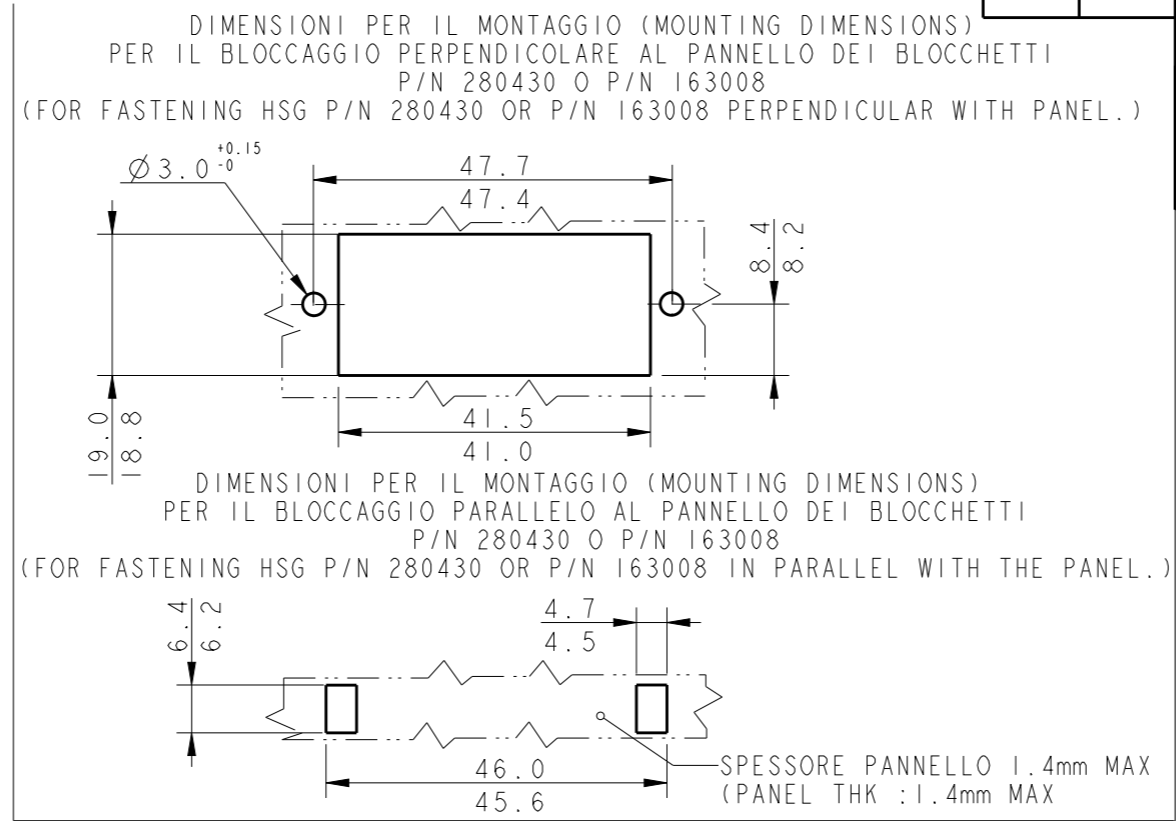
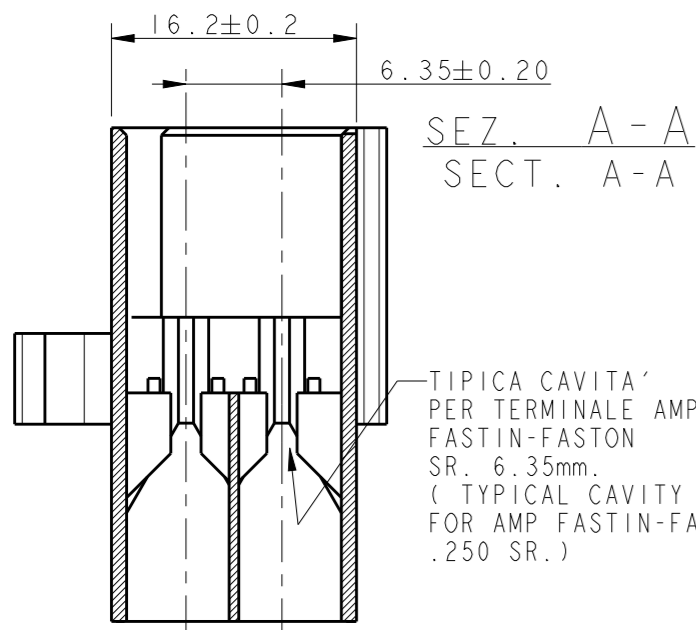
DIST -

REVISIONS

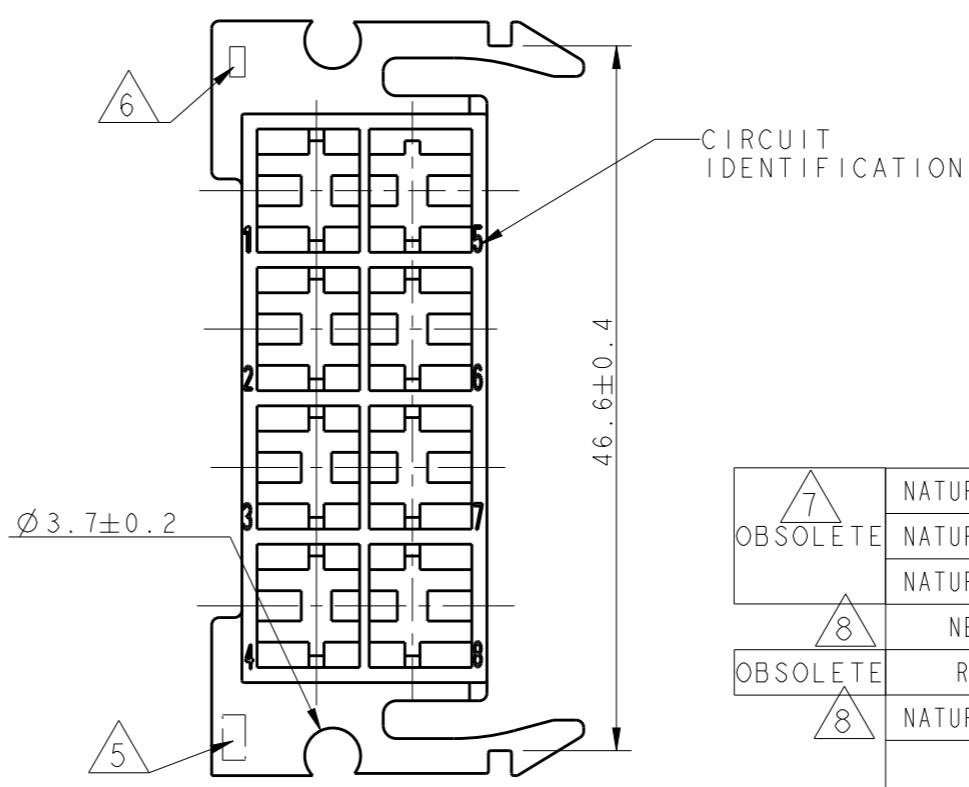
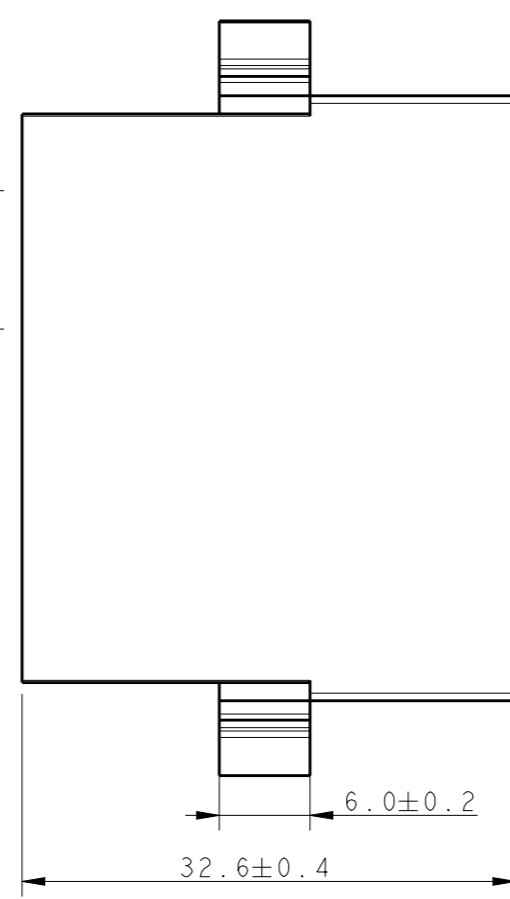
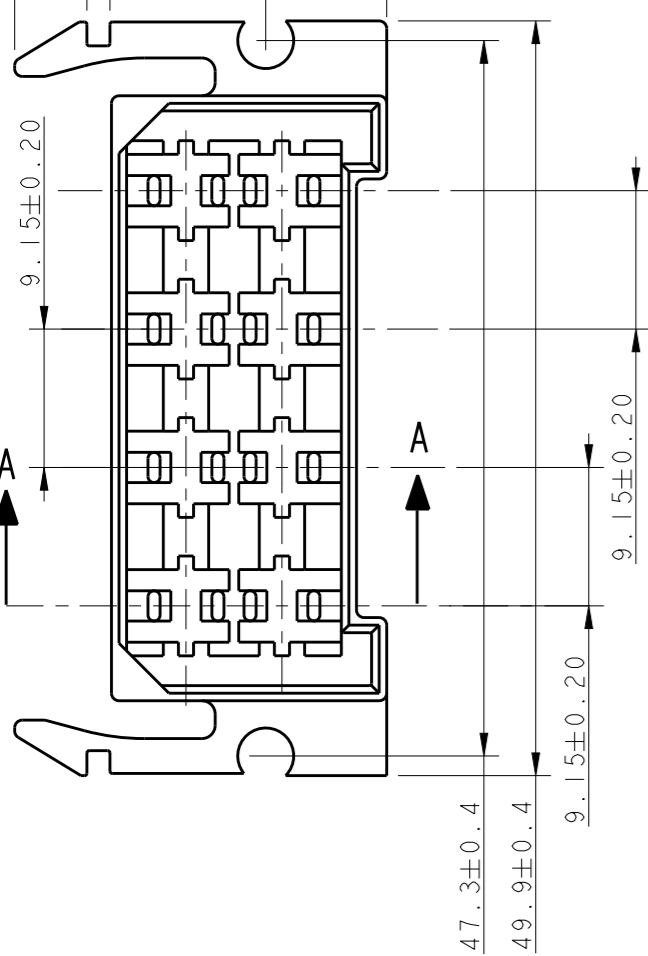
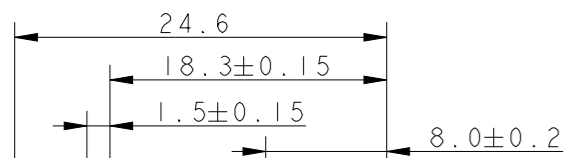
© COPYRIGHT 2002

ALL RIGHTS RESERVED.

P	LTR	DESCRIPTION	DATE	DWN	APVD
U3		REVISED AND REDRAWN, ET00-0098-02	20 SEP 2002	HY	CT
U4		REVISED PER ECO-09-025699	19DEC09	KK	AEG
U5		ECR-10-022530	14JUN11	KK	HMR
U6		REVISED PER ECR-15-014177	11NOV2015	PK	TD



- 1 RISERVATO PER TE AMP DE FRANCE (RESTRICTED FOR TE AMP DE FRANCE)
- 2 RISERVATO "PHILCO™" (RESTRICTED FOR "PHILCO™")
- 3 VERSIONE NON DISPONIBILE IN TE AMP ITALIA (NOT AVAILABLE FROM TE AMP ITALY)
- 4 VERSIONE "GLOW WIRE" ("GLOW WIRE" VERSION)
- 5 MARCHIO DI FABBRICA AMP (AMP TRADE MARK)
- 6 NUMERO DI IMPRONTA STAMPO (MOULD CAVITY IDENTIFICATION NO)
- 7 OBSOLETE PARTS: OBSOLETE CIS STREAMLINING PER D.RENAUD/D.SINISI
- 8 280430-X IS REPLACED BY 163008-X



OBSOLETE	7	NATURALE (NATURAL)	ZYTEL 135F	4	4 280430 0	U
		NATURALE (NATURAL)	PA 6.6 (PA 6.6 UNFILLED)	3	3 280430 0	U
		NATURALE (NATURAL)		2	2 280430 0	U
	8	NERO (BLACK)			0 280430 5	U
OBSOLETE		ROSSO (RED)	PA 6.6 (PA 6.6 UNFILLED)		0 280430 1	U
	8	NATURALE (NATURAL)			0 280430 0	U
		COLORE (COLOUR)	MATERIALE (MATERIAL)		NUMERO (PART NUMBER)	REV

THIS DRAWING IS A CONTROLLED DOCUMENT.

DWN H. YAALI 10JUL2002
CHK C. TARTARI
APVD -
PRODUCT SPEC 108-20020
APPLICATION SPEC -
WEIGHT 8.16 g

DIMENSIONS: mm
TOLERANCES UNLESS OTHERWISE SPECIFIED:
0 PLC ±-
1 PLC ±0.3
2 PLC ±-
3 PLC ±-
4 PLC ±-
ANGLES ±2°
FINISH SEE TABLE

MATERIAL SEE TABLE

STE TE Connectivity

NAME FASTIN-FASTON* Connector, .250inch srs. TAB HOUSING, 8 POSITIONS

SIZE A3 CAGE CODE 00779 DRAWING NO C-280430 RESTRICTED TO -

CUSTOMER DRAWING SCALE 2:1 SHEET 1 OF 1 REV U6