



ORION FANS

PRODUCT SELECTOR GUIDE

ORIONFANS.COM



FANS



AGRICULTURE/ HORTICULTURE

Vertical Farming, Greenhouses, Farming Equipment, Silos, Smart AG

Recommended Products: Axial Fans, Harsh Environment Fans, Blowers, Specialty Fans, Open Frame Motors

APPLIANCES

Commercial Food, Vending, and Dispensing Equipment, White Goods, Fryers, Ovens

Recommended Products: Axial Fans, Blowers, Power Cords, Reversible Flow Fans, Open Frame Motors, Fan Accessories



AUTOMOTIVE

Cabin Air Movement, Infotainment, Seat Cushion

Recommended Products: DC Fans

BUILDING AUTOMATION

Environmental Controls For Buildings, Data Centers, Enclosures

Recommended Products: Axial Fans, Harsh Environment Fans, Louvered Filter Fan Kits, Blowers, Fan Accessories



COMPUTER/ NETWORKING/ TELECOM

Network Equipment, Enclosures, Base Stations, Battery Backup Systems, IOT

Recommended Products: Axial Fans, Blowers, Fan Trays, Specialty Fans, Fan Accessories

HVAC/ REFRIGERATION

Small To Medium Commercial/Residential Air Conditioner Control Panels

Recommended Products: Axial Fans, Louvered Filter Fan Kits, AC Motorized Impellers, Blowers, Specialty Fans, Open Frame Motors



KIOSKS/ DIGITAL SIGNAGE/ GAMING

Media Server, Touchscreens, Displays, Power Supplies, Gambling Machines

Recommended Products: Axial Fans, Fan Accessories

MEDICAL

MRI machines, CT scanners, PET scanners, Ventilators, Ultrasound machine, Hospital Beds, Respirators

Recommended Products: Axial Fans, Fan Accessories, Blowers



OIL & GAS (PETROCHEMICAL)

Oil Derricks and Platforms, Gas-Related Plants/Control Stations, Valve Stations, Plastics Manufacturing

Recommended Products: Axial Fans, Harsh Environment Fans, Fan Accessories, Blowers, Specialty Fans

PROCESS & INDUSTRIAL CONTROLS/ INSTRUMENTATION & AUTOMATION

3D, Printers, CNC Machines, Variable-Speed Motor Drives, and Cabinets, Electronic Enclosures and Panels

Recommended Products: Axial Fans, Harsh Environment Fans, Louvered Filter Fan Kits, Specialty Fans, Fan Accessories



RENEWABLE/ ALTERNATIVE ENERGY

Electric Vehicle Chargers, Solar Systems, Wind Turbines, Geothermal, Tidal Energy, Hydropower

Recommended Products: Axial Fans, Harsh Environment Fans, Blowers, Fan Accessories

TRANSPORTATION/ MATERIAL HANDLING EQUIPMENT

Buses, Shuttles, Industrial Vehicles and Equipment, Planes

Recommended Products: Axial Fans, Harsh Environment Fans (IP69K), Blowers, Specialty Fans, Fan Accessories



AC & EC FANS



AC FANS

SERIES	mm (in)	VOLTAGE (VAC)	AIRFLOW (CFM)
OA60AP	60x60x30 (2.4x2.4x1.20)	115, 230	11
OA825AP	80x80x25 (3.2x3.2x1.0)	115, 230 DV*	16-25
OA80AP	80x80x38 (3.2x3.2x1.5)	115, 230 DV*	17-30
OA80AP-METAL	80x80x38 (3.2x3.2x1.5)	115, 230	18-33
OA92AP	92x92x25 (3.6x3.6x1.0)	115, 230 DV*	22-35
OA938AP	92x92x38 (3.6x3.6x1.5)	115, 230 DV*	26-50
OA938AP-METAL	92x92x38 (3.6x3.6x1.5)	115, 230	27-55
OA125AP	120x120x25 (4.7x4.7x1.0)	115, 230 DV*	53-75
OA109AP	120x120x38 (4.7x4.7x1.5)	115, 230 DV*	52-104
OA109AP-AIOS	120x120x38 (4.7x4.7x1.5)	115, 230	75-99
OA109AP-XC	120x120x38 (4.7x4.7x1.5)	115, 230	110-131
OA109AP-METAL	120x120x38 (4.7x4.7x1.5)	115, 230	58-105
OA109AP-IP55	120x120x38 (4.7x4.7x1.5)	115, 230	106
OA109AP-SALTFOG	120x120x38 (4.7x4.7x1.5)	115, 230	106
OA109AP-SMART	120x120x38 (4.7x4.7x1.5)	115, 230	63-97
OA4715	120x120x38 (4.7x4.7x1.5)	115, 230	110
OA119AP	127x127x38 (5.0x5.0x1.5)	115, 230 DV*	74-130
OA119AP-METAL	127x127x38 (5.0x5.0x1.5)	115, 230	65-128
OA5920	172x150x51 (6.8x5.9x2.0)	115, 230	180
OA162	172x150x55 (6.8x5.9x2.2)	115, 230	230
OA162AP-METAL	172x150x55 (6.8x5.9x2.2)	115, 230	113-248
OA172SAPL	172x150x38 (6.8x5.9x1.5)	115, 230	103-228
OA172SAPL-IP55	172x150x38 (6.8x5.9x1.5)	115, 230	103-228
OA172SAP	172x150x51 (6.8x5.9x2.0)	115, 230	135-235
OA172SAP-XC	172x150x51 (6.8x5.9x2.0)	115, 230	300
OA172SAP-METAL	172x150x51 (6.8x5.9x2.0)	115, 230	95-210
OA172SAP-IP55	172x150x51 (6.8x5.9x2.0)	115, 230	226
OA172SAP-SALTFOG	172x150x51 (6.8x5.9x2.0)	115, 230	226
OA172SAPXC-SALTFOG	172x150x55 (6.8x5.9x2.2)	115, 230	293
OA172AP	172x172x51 (6.8x6.8x2.0)	115, 230	135-235
OA172AP-XC	172x172x51 (6.8x6.8x2.0)	115, 230	257-300
OA172AP-METAL	172x172x51 (6.8x6.8x2.0)	115, 230	105-215
OA172AN	172x172x51 (6.8x6.8x2.0)	115, 230	135-235
OA180AN-METAL	176x176x89 (6.9x6.9x3.5)	115, 230	175-380
OA180AP	176x176x89 (6.9x6.9x3.5)	115, 230	409
OA180AP-IP55	180x180x90 (7.1x7.1x2.6)	115, 230	460
OA180AP-IP68	176x176x89 (7.0x7.0x3.5)	115, 230	380
OA180AP-IP69K	176x176x89 (7.0x7.0x3.5)	115, 230	380
OA180ANL-METAL	180x180x65 (7.1x7.1x2.6)	110, 240	185-400
OA180APL	180x180x65 (7.1x7.1x2.6)	115, 230	210-405
OA180APL-IP68	180x180x65 (7.1x7.1x2.6)	115, 230	400
OA180APL-IP69K	180x180x65 (7.1x7.1x2.6)	115, 230	400
OA200AN-METAL	200x220x70 (7.9x8.7x2.8)	115, 230	230-485
OA200AP-IP68	220x220x70 (8.7x8.7x2.8)	115, 230	485
OA200AP-IP69K	220x220x70 (8.7x8.7x2.8)	115, 230	485
OA205AN-METAL	205x205x72 (8.0x8.0x2.8)	115, 230	310-590
OA205AP-IP68	205x205x72 (8.0x8.0x2.8)	115, 230	590

DV* = DUAL VOLTAGE OPTIONS AVAILABLE

AC FANS

SERIES	mm (in)	VOLTAGE (VAC)	AIRFLOW (CFM)
OA205AP-IP69K	205x205x72 (8.0x8.0x2.8)	115, 230	590
OA225AN-METAL	225x225x80 (8.9x8.9x3.2)	115, 230	530-600
OA225AP-IP68	225x240x80 (8.9x9.4x3.2)	115, 230	620
OA225AP-IP69K	225x225x80 (8.9x8.9x3.1)	115, 230	620
OA254AP	254x254x89 (10x10x3.5)	115, 230	460-547
OA254AP-SALTFOG	254x254x89 (10x10x3.5)	115, 230	550
OA254AN	254x254x89 (10x10x3.5)	115, 230	320-700
OA254AN-XC	254x254x89 (10x10x3.5)	115, 230	320-850
OA2543AN-METAL	254x254x89 (10x10x3.5)	115, 230	400-930
OA2543AP-IP68	254x254x89 (10x10x3.5)	115, 230	930
OA2543AP-IP69K	254x254x89 (10x10x3.5)	115, 230	930
OA2547AN-METAL	254x254x89 (10x10x3.5)	115, 230	485-1,000
OA2547AP-IP68	254x254x89 (10x10x3.5)	115, 230	930-1,000
OA2547AP-IP69K	254x254x89 (10x10x3.5)	115, 230	1,000-1,300
OA280AP-IP68	280x280x89 (11.0x11.0x3.5)	115, 230	1,300
OA280AP-IP69K	280x280x89 (11.0x11.0x3.5)	115, 230	1,300

EC FANS

SERIES	mm (in)	VOLTAGE (VAC)	AIRFLOW (CFM)
OA60EC	60x60x25 (2.4x2.4x1.0)	115, 230	19-20
OA60EC-ATEX	60x60x25 (2.4x2.4x1.0)	115, 230	19-20
OA825EC-XC	80x80x25 (3.2x3.2x1.0)	85-265	40.2
OA80EC	80x80x38 (3.2x3.2x1.5)	85-265	39
OA80EC-XC	80x80x38 (3.2x3.2x1.5)	85-265	60
OA92EC-XC	92x92x25 (3.6x3.6x1.0)	85-265	56
OA9232EC	92x92x32 (3.6x3.6x1.3)	85-265	58
OA938EC	92x92x38 (3.6x3.6x1.5)	85-265	60
OA938EC-XC	92x92x38 (3.6x3.6x1.5)	85-265	88
OA125EC	120x120x25 (4.7x4.7x1.0)	85-265	80
OA109EC	120x120x38 (4.7x4.7x1.5)	90-265	106
OA109EC-XC	120x120x38 (4.7x4.7x1.5)	85-265	133.8
OA109EC-ATEX	120x120x38 (4.7x4.7x1.5)	115, 230	106
OA172EC	172x150x51 (6.8x5.9x2.0)	103-127	220
OA172EC-ATEX	172x150x51 (6.8x5.9x2.0)	115, 230	220
OA200EC	250x250x76 (9.8x9.8x3.0)	115, 230	290-460
OA254EC	254x254x89 (10.0x10.0x3.5)	95-264	500
OA254EC-XC	254x254x89 (10.0x10.0x3.5)	115, 230	830
OA254EC-ATEX	254x254x89 (10.0x10.0x3.5)	95-264	500
OA254EC-XC-ATEX	254x254x89 (10.0x10.0x3.5)	115, 230	830



ALL INFORMATION IS SUBJECT TO CHANGE WITHOUT PRIOR NOTIFICATION



DC FANS

DC FANS SERIES

SERIES	mm (in)	VOLTAGE (VDC)	AIRFLOW (CFM)
OD2510	25x25x10 (1.0x1.0x0.4)	5, 12	1.5-2.7
OD3010	30x30x10 (1.2x1.2x0.4)	5, 12	3.5-5
OD3510	35x35x10 (1.4x1.4x0.4)	5, 12	3-6
OD4010	40x40x10.5 (1.6x1.6x0.4)	5, 12, 24	5-12
OD4015	40x40x15 (1.6x1.6x0.6)	12, 24	6.8-9
OD4020	40x40x20 (1.6x1.6x0.8)	5, 12, 24	7-9
OD4028	40x40x28 (1.6x1.6x1.1)	5, 12, 24	9-25
OD4028-XC	40x40x28 (1.6x1.6x1.1)	12, 24	22.5-22.5
OD4028-XE	40x40x28 (1.6x1.6x1.1)	12, 24	28.6-31.5
OD4056	40x40x56 (1.6x1.6x2.2)	12	32
OD5010	50x50x10 (2.0x2.0x0.4)	5, 12, 24	9-11
OD5015	50x50x15 (2.0x2.0x0.6)	12	11-17
OD5210	52x52x10 (2.1x2.1x0.4)	5, 12	10-12
OD6010	60x60x10 (2.4x2.4x0.4)	5, 12, 24	14.3-19.8
OD6015	60x60x15 (2.4x2.4x0.6)	5, 12, 24	11-18
OD6020	60x60x20 (2.4x2.4x0.8)	5, 12, 24	4.5-26
OD6025	60x60x25 (2.4x2.4x1.0)	5, 12, 24, 48	14-32
OD6025 IP68	60x60x25 (2.4x2.4x1.0)	12, 24, 48	14-32
OD6025 IP69K	60x60x25 (2.4x2.4x1.0)	12, 24, 48	25-28
OD6025-60LB	60x60x25 (2.4x2.4x1.0)	60	26
OD6025-SS	60x60x25 (2.4x2.4x1.0)	12, 24	23
OD6025-XE	60x60x25 (2.4x2.4x1.0)	12, 24, 48	40-54
OD6038-VXC	60x60x38 (2.4x2.4x1.5)	12, 24	38-61
OD6038-XC	60x60x38 (2.4x2.4x1.5)	12, 24	68-86
OD7015	70x70x15 (2.8x2.8x0.6)	12	28.5-41
OD7020	70x70x20 (2.8x2.8x0.8)	12	41-45
OD7025	70x70x25 (2.8x2.8x1.0)	12, 24	33-60
OD8015	80x80x15 (3.1x3.1x0.6)	5, 12, 24	23-38
OD8020	80x80x20 (3.1x3.1x0.8)	12, 24	27-40
OD8025	80x80x25 (3.1x3.1x1.0)	5, 12, 24, 48	21-48
OD8025 IP68	80x80x25 (3.1x3.1x1.0)	12, 24, 48	22-48
OD8025 IP69K	80x80x25 (3.1x3.1x1.0)	12, 24, 48	40
OD8025-SS	80x80x25 (3.1x3.1x1.0)	12, 24	40
OD8025-XE	80x80x25 (3.1x3.1x1.0)	12, 24, 48	65-105
OD8032	80x80x32 (3.1x3.1x1.3)	12, 24, 48	40-56
OD8032 IP68	80x80x32 (3.1x3.1x1.3)	12	60-81
OD8032 IP69K	80x80x32 (3.1x3.1x1.3)	12, 24, 48	77
OD8038	80x80x38 (3.1x3.1x1.5)	12, 24	50-82
OD8038 IP68	80x80x38 (3.1x3.1x1.5)	12, 24	50-82
OD8038 IP69K	80x80x38 (3.1x3.1x1.5)	12, 24	71
OD8038-VXC	80x80x38 (3.1x3.1x1.5)	12, 24, 48	76-112
OD8038-XE	80x80x38 (3.1x3.1x1.5)	12, 24, 48	132
OD9220	92x92x20 (3.6x3.6x0.8)	12, 24	28-32
OD9225	92x92x25 (3.6x3.6x1.0)	12, 24, 48	25.1-65.7
OD9225-XE	92x92x25 (3.6x3.6x1.0)	12, 24, 48	75.7-102.7
OD9225 IP68	92x92x25 (3.6x3.6x1.0)	12, 24, 48	25.1-60.2
OD9225 IP69K	92x92x25 (3.6x3.6x1.0)	12, 24, 48	49.8
OD9225-SS	92x92x25 (3.6x3.6x1.0)	12, 24	60.2
OD9225-60HB	92x92x25 (3.6x3.6x1.0)	60	69
OD9225-SPOT	92x92x25 (3.6x3.6x1.0)	120VAC INPUT	50

SERIES	mm (in)	VOLTAGE (VDC)	AIRFLOW (CFM)
OD9238	92x92x38 (3.6x3.6x1.5)	12, 24, 48	78-110
OD9238 IP68	92x92x38 (3.6x3.6x1.5)	24, 48	78-110
OD9238 IP69K	92x92x38 (3.6x3.6x1.5)	24, 48	100
OD9238-VXC	92x92x38 (3.6x3.6x1.5)	12, 24, 48	96-125
OD9238-VXE	92x92x38 (3.6x3.6x1.5)	12, 24, 48	124-167
OD9238-XC	92x92x38 (3.6x3.6x1.5)	12	174
OD1225	120x120x25 (4.7x4.7x1.0)	12, 24, 48	70-120
OD1225 IP68	120x120x25 (4.7x4.7x1.0)	12, 24, 48	70-120
OD1225 IP69K	120x120x25 (4.7x4.7x1.0)	12, 24, 48	120
OD1225-SS	120x120x25 (4.7x4.7x1.0)	12, 24	85
OD1232	120x120x32 (4.7x4.7x1.3)	12, 24, 48	93-120
OD1232-SPOT/DIN	120x120x32 (4.7x4.7x1.3)	120VAC INPUT	65-120
OD1238	120x120x38 (4.7x4.7x1.5)	12, 24, 48	89.5-178
OD1238AP	120x120x38 (4.7x4.7x1.5)	12, 24, 48	70-140
OD1238 IP68	120x120x38 (4.7x4.7x1.5)	12, 24, 48	89.5-178
OD1238 IP69K	120x120x38 (4.7x4.7x1.5)	12, 24, 48	124.1
OD1238-REVERSIBLE	120x120x38 (4.7x4.7x1.5)	12, 24, 48	115-146
OD1238-VXC	120x120x38 (4.7x4.7x1.5)	12, 24, 48	140-283
OD1238-VXE	120x120x38 (4.7x4.7x1.5)	12, 24, 48	285.2
OD1238-SS	120x120x38 (4.7x4.7x1.5)	12, 24	96-105
OD1238-XC	120x120x38 (4.7x4.7x1.5)	12, 24, 48	130-220
OD1238-XE	120x120x38 (4.7x4.7x1.5)	12, 24, 48	209-238
OD1238-60HB	120x120x38 (4.7x4.7x1.5)	60	115
OD1238-HTB	120x120x38 (4.7x4.7x1.5)	12, 24, 48	90
OD1238-XJ	120x120x38 (4.7x4.7x1.5)	12, 24	207-250
OD127	127x127x38.5 (5x5x1.5)	12, 24, 48	122-173
OD127AP	127x127x38.5 (5x5x1.5)	12, 24, 48	86-140
OD172SAPL	172x150x38 (6.8x5.9x1.5)	12, 24, 48	120-225
OD172SAP	172x150x51 (6.8x5.9x2.0)	12, 24, 48	235
OD172SAP-REVERSIBLE	172x152x51 (6.8x6.0x2.0)	12, 24, 48	310/218
OD172SAP IP68	172x150x51 (6.8x5.9x2.0)	12, 24, 48	125-300
OD172SAP IP69K	172x150x51 (6.8x5.9x2.0)	24, 48	120-300
OD172SAP-XC	172x150x51 (6.8x5.9x2.0)	12, 24, 48	232-307
OD172SAP-XC IP68	172x150x51 (6.8x5.9x2.0)	12, 24, 48	263-323
OD172SAP-XC IP69K	172x150x51 (6.8x5.9x2.0)	12, 24, 48	263-323
OD172AP	172x172x51 (6.8x6.8x2.0)	12, 24, 48	180-318
OD180APL	180x180x65 (7.0x7.0x2.6)	12, 24, 48	300-460
OD180APL IP68	180x180x65 (7.0x7.0x2.6)	12, 24, 48	300-460
OD180APL IP69K	180x180x65 (7.0x7.0x2.6)	12, 24, 48	300-460
OD254AP	254x254x89 (10.0x10.0x3.5)	12, 24, 48	550-830
OD254AP IP68	254x254x89 (10.0x10.0x3.5)	12, 24, 48	550-830
OD254AP IP69K	254x254x89 (10.0x10.0x3.5)	12, 24, 48	550-830
OD280	280x280x89 (11.0x11.0x3.5)	12, 24, 48	870-2200

ALL INFORMATION IS SUBJECT TO CHANGE WITHOUT PRIOR NOTIFICATION



FAN TRAYS, CONTROLLERS, & MOTORS



AC FAN TRAY SERIES

SERIES	VOLTAGE (VAC)	NUMBER OF FANS	AIRFLOW (CFM)
OAT300	115	3	312
OAT300-A	115	3	312
OAT300S	115	3	312
OAT300ST	115	3	190-312
OAT302	230	3	312
OAT302-A	230	3	312
OAT302S	230	3	330
OAT615	90-264	6	90~264
OAT615PS	POWER SUPPLY	-	-
OAT600	115	6	624
OAT600S	115	6	624
OAT600ST	115	6	624
OAT602	230	6	624
OAT602S	230	6	624
OAT900	115	9	936
OAT902	230	9	936

*AVAILABLE WITH UNIVERSAL RANGE

EC FAN TRAY SERIES

SERIES	VOLTAGE (VAC)	NUMBER OF FANS	AIRFLOW (CFM)
OET305	80~265	3	401
OET305-A	80~265	3	401
OET605	80~265	6	803
OET905	80~265	9	1204

DC FAN TRAY SERIES

SERIES	VOLTAGE (VDC)	NUMBER OF FANS	AIRFLOW (CFM)
ODT300	12,24,48	3	372.3
ODT301-A	12	3	372.3
ODT303-A	24	3	372.3
ODT304-A	48	3	372.3
ODT600	12,24,48	6	744.6
ODT900	12,24,48	9	1116.9

FAN TRAY BLOWER ASSEMBLIES

SERIES	VOLTAGE (VAC)	AIRFLOW (CFM)
OAT230	115	340
OAT232	230	340

FAN SPEED CONTROL UNIT

PART NUMBER	VOLTAGE (VAC)
OA11/22CB	120, 220

THERMAL CONTROLLER

PART NUMBER	VOLTAGE (VAC)	OUTPUT
TCAC001	120, 230	10 AMPS

OPEN FRAME MOTORS

PART NUMBER	RATED INPUT POWER (W)	MAX IMPELLAR SIZE (mm)	WEIGHT (lbs)
OAM82AN	33	200	1.8
OAM92AN	38-40	230	2.4
OAM97AN	60	250	3.0
OAM105AN	73	250	3.3
OAM114AN	95	300	4.0
OAM125AN	120	300	4.0

OPEN FRAME MOTOR IMPELLERS

PART NUMBER	FAN CLASS	IMPELLER (Ø)	PITCH ANGLE
IMP-154-YY*	154	154	19°-34°
IMP-170-YY*	170	170	19°-34°
IMP-200-YY*	200	198	19°-34°
IMP-230-YY*	230	230	19°-34°
IMP-250-YY*	250	248	19°-34°
IMP-300-YY*	300	298	19°-34°

*ACCOMPANYING BRACKETS AVAILABLE





BLOWERS, LOUVERED FILTER FAN KITS, & CENTRIFUGAL FANS

AC BLOWERS

SERIES	VOLTAGE (VAC)	AIRFLOW (CFM)
OAB800AN	115, 230	14-30
OAB908AN	115, 230	50-100

DC BLOWERS

SERIES	VOLTAGE (VDC)	AIRFLOW (CFM)
ODB5009	5, 12	3
ODB5115	12	2.4-4.2
ODB6015	12	7.45
ODB7530	12, 24	13.8
ODB9733	12, 24	32-38.4
ODB600PT	12, 24, 48	20-30
ODB1232	12, 24	23.7-32.3
ODB182	24, 48	136

*CUSTOM BLOWERS AVAILABLE

LOUVERED FILTER FAN KITS

SNAP-ON	SLIDE	HINGED	VOLTAGE (VAC)
OA109LFG	OA109S	OA109LFGH	115, 230
OA172LFG	OA172LFGS	OA172LFGH	115, 230
OA172LFG-XC	OA172LFGS-XC	OA172LFGH-XC	115, 230
OA225LFG	OA225LFGS	OA225LFGH	115, 230
OA254LFG	OA254LFGS	OA254LFGH	115, 230
OA254LFG-XC	OA254LFGS-XC	OA254LFGH-XC	115, 230
OA280LFG	OA280LFGS	OA280LFGH	115, 230

*DC & EC MODELS AVAILABLE

AC BACKWARD CURVED IMPELLERS

PART NUMBER	VOLTAGE (VAC)	AIRFLOW (CFM)
OAB13372	115, 230	165-188
OAB13391	115, 230	165-188
OAB18055	115, 230	264-290
OAB190	115, 230	370
OAB220	115, 230	530
OAB22569	115, 230	500-550
OAB22585	115, 230	618-680
OAB22599	115, 230	700-770
OAB250	115, 230	850
OAB318	115, 230	1,015-1,165
OAB360	115, 230	1,645
OAB400	230	1,900

DC BACKWARD CURVED IMPELLERS

PART NUMBER	VOLTAGE (VDC)	AIRFLOW (CFM)
ODB13391	24, 48	326
ODB17567	12, 24, 48	338
ODB19069	24, 48	395-432
ODB22071	24, 48	580-621
ODB22599	24, 48	835
ODB250110	24, 48	825

*ACCOMPANYING DUCT RINGS AVAILABLE

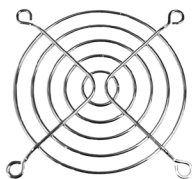
ACCESSORIES



LOUVERED FILTER FAN KITS

AVAILABLE FOR FAN SIZES: 80mm-280mm

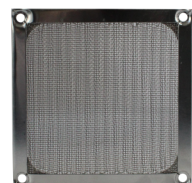
OA109LFG, OA172LFG, OA172LFG-XC, OA225LFG, OA254LFG, OA254LFG-XC, OA280LFG, OA109LFGS, OA172LFGS, OA172LFGS-XC, OA225LFGS, OA254LFGS, OA254LFGS-XC, OA280LFGS, OA109LFGH, OA172LFGH, OA172LFGH-XC, OA225LFGH, OA254LFGH, OA254LFGH-XC, OA280LFGH



STEEL WIRE GUARDS

AVAILABLE FOR FAN SIZES: 25mm-280mm

G25-2, G40-2, G50-3, G60-4, G70-4, G80-18B, G80-18, G92-16, G92-16B, G109-15B-1, G109-15-1, G109-15AB, G109-15A, G109-3A, G119-8, G172-10LN, G172-10HAB, G172-10HA, G172-10HB, G172-10H, G162-13, G162-12, G180-11, G180-MG18, G200-12, G205-8D, G225, G254-10, G254-10P



WIRE MESH GUARDS

AVAILABLE FOR FAN SIZES: 60mm-172mm

WMG60M, WMG60B, WMG80M, WMG80B, WMG92M, WMG92B, WMG120B, WMG120M, WMG127M, WMG172B, WMG172M

PLASTIC GUARDS

AVAILABLE FOR FAN SIZES: 40mm-172mm

G40P, G60P, G80P, G92P, G120P, G172P



PUSH-ON GUARDS

AVAILABLE FOR FAN SIZES: 80mm-172mm

G80POG, G92POG, G120POG, G127POG, G172POG



PLASTIC FILTER KITS

AVAILABLE FOR FAN SIZES: 40mm-172mm

GRM40-30, GRM40-45, GRM60-30, GRM60-45, GRM80-30, GRM80-45, GRM92-45, GRM92-30, GRM120-30, GRM120-45, GRM172-30, GRM172-45





AIR FLOW MONITORS

PART NUMBER	DESCRIPTION
AFM-01NC	NORMALLY CLOSED SWITCH W/ CLIP AND CLAMP
AFM-01NO	NORMALLY OPEN SWITCH W/ CLIP AND CLAMP
AFM-80NC	NORMALLY CLOSED SWITCH W/80MM GUARD
AFM-80NO	NORMALLY OPEN SWITCH W/80MM GUARD
AFM-92NC	NORMALLY CLOSED SWITCH W/92MM GUARD
AFM-92NO	NORMALLY OPEN SWITCH W/92MM GUARD
AFM-120NC	NORMALLY CLOSED SWITCH W/120MM GUARD
AFM-120NO	NORMALLY OPEN SWITCH W/120MM GUARD
AFM-KIT	KIT WITH AFM-01NC, CLIP, PLASTIC FAN GUARDS, BUZZER, LED & HOLDER, SWITCH, & POWER SUPPLY

HARDWARE

PART NUMBER	LABEL	HOLE STYLE	THREAD
OCN-1032	CAGE NUTS	SQUARE	10-32
OCN-1032RH	CAGE NUTS	ROUND	10-32
OCN-1032WS	WASHER	SQUARE	10-32
OCN-1032SCW	SCREW	N/A	10-32
OCN-1224	CAGE NUTS	SQUARE	12-24
OCN-1224RH	CAGE NUTS	ROUND	12-24
OCN-1224SCW	SCREWS	N/A	12-24
OCN-1224WS	WASHERS	SQUARE	12-24
OCN-M6	CAGE NUTS	SQUARE	M6
OCN-M6RH	CAGE NUTS	ROUND	M6
OCN-M6SCW	SCREWS	N/A	M6

FAN CORDS

PART NUMBER	HEAD STYLE	NUMBER OF HEADS	TAIL LENGTH	TERMINATION
C180-12	STRAIGHT	1	12"	BLUNT CUT
C180-24	STRAIGHT	1	24"	BLUNT CUT
C180-36	STRAIGHT	1	36"	BLUNT CUT
C180-48	STRAIGHT	1	48"	BLUNT CUT
C180-48P	STRAIGHT	1	48"	PLUG ADDED
C180-72	STRAIGHT	1	72"	BLUNT CUT
C180T-12	"T"	1	12"	BLUNT CUT
C180T-24	"T"	1	24"	BLUNT CUT
C180T-36	"T"	1	36"	BLUNT CUT
C180T-48	"T"	1	48"	BLUNT CUT
C180T-72	"T"	1	72"	BLUNT CUT
C45-12	45 DEGREE	1	12"	BLUNT CUT
C45-144	45 DEGREE	1	144"	BLUNT CUT
C45-144P	45 DEGREE	1	144"	PLUG ADDED
C45-24	45 DEGREE	1	24"	BLUNT CUT
C45-24P	45 DEGREE	1	24"	PLUG ADDED
C45-2DC-24	45 DEGREE	2	24"	BLUNT CUT
C45-2DC-144P	45 DEGREE	2	144"	PLUG ADDED
C45-2DC-36	45 DEGREE	2	36"	BLUNT CUT
C45-2DC-60	45 DEGREE	2	60"	BLUNT CUT
C45-2DC-72P	45 DEGREE	2	72"	PLUG ADDED
C45-2DC-84	45 DEGREE	2	84"	BLUNT CUT
C45-36	45 DEGREE	1	36"	BLUNT CUT
C45-3DC-24	45 DEGREE	3	24"	BLUNT CUT
C45-3DC-144P	45 DEGREE	3	144"	PLUG ADDED
C45-3DC-72P	45 DEGREE	3	72"	PLUG ADDED
C45-3DC-24P	45 DEGREE	1	24"	PLUG ADDED
C45-48	45 DEGREE	1	48"	BLUNT CUT
C45-48P	45 DEGREE	4	48"	PLUG ADDED
C45-4DC-24	45 DEGREE	4	24"	BLUNT CUT
C45-4DC-72P	45 DEGREE	1	72"	PLUG ADDED
C45-60P	45 DEGREE	6	60"	PLUG ADDED
C45-6DC-24	45 DEGREE	1	24"	BLUNT CUT
C45-72	45 DEGREE	1	72"	BLUNT CUT
C45-72P	45 DEGREE	9	72"	PLUG ADDED
C45-9DC-24	45 DEGREE	1	24"	BLUNT CUT
C90-12	90 DEGREE	1	12"	BLUNT CUT
C90-144P	90 DEGREE	1	144"	PLUG ADDED
C90-24	90 DEGREE	1	24"	BLUNT CUT
C90-36	90 DEGREE	1	36"	BLUNT CUT
C90-48	90 DEGREE	1	48"	BLUNT CUT
C90-72	90 DEGREE	1	72"	BLUNT CUT
C90-80P	90 DEGREE	1	80"	PLUG ADDED





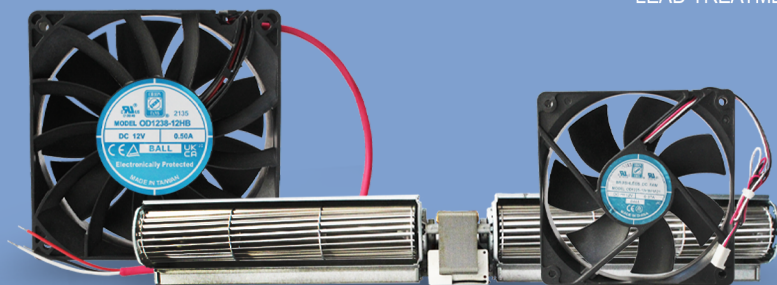
VALUE-ADD

WE'LL MAKE YOU A FAN

ORION FANS OFFERS VALUE-ADD OPTIONS FOR MANY OF OUR STANDARD AND SPECIAL FUNCTION FAN PRODUCTS. WE CAN ALSO CUSTOMIZE MATERIAL AND MECHANICAL DESIGN TO MATCH REQUIREMENTS. ALONG WITH CUSTOMIZATION OPTIONS FOR STANDARD PRODUCTS, OUR EXTENSIVE OEM CAPABILITIES ALLOW US TO PRODUCE FULL TURN-KEY SOLUTIONS. WHETHER YOUR CURRENT PRODUCTS ARE UNAVAILABLE, DISCONTINUED (EOL), OR SIMPLY NOT MEETING YOUR EXPECTATIONS, WE CAN HELP DETERMINE AN EFFECTIVE SOLUTION.

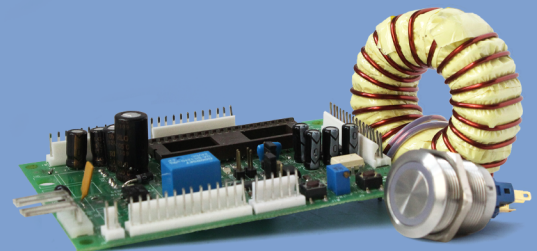
TYPES OF VALUE-ADD:

- CONNECTORS
- LEAD TREATMENT (SHEATHING, TWISTING, SOLDER DRIP ADD, CLIP ENDS, STRIPPING)
- CUSTOM LEAD LENGTH
- INSERTS IN MOUNTING HOLES
- SPACERS BETWEEN FLANGES
- KITTING WITH FINGER GUARDS & POWER CORDS
- CUSTOM FAN TRAYS
- CUSTOM VOLTAGES



KNIGHT OEM

NOT YOUR TYPICAL MANUFACTURER



KNIGHT ELECTRONICS, INC. IS A TECHNICALLY ENABLED MANUFACTURING SERVICES COMPANY SERVING SMALL TO LARGE OEMS. OUR HEADQUARTERS IS IN DALLAS, TEXAS WITH SALES, MANUFACTURING, ENGINEERING, AND INVENTORY ON THREE CONTINENTS. WITH OUR TECHNICAL ABILITY, RESOURCES, AND SUPPLY CHAIN RESILIENCY, WE CAN KEEP YOU COMPETITIVE IN AN EVER CHANGING GLOBAL MARKETPLACE.



ORION FANS
10557 METRIC DRIVE
DALLAS, TX 75243
214-340-0265
WWW.ORIONFANS.COM