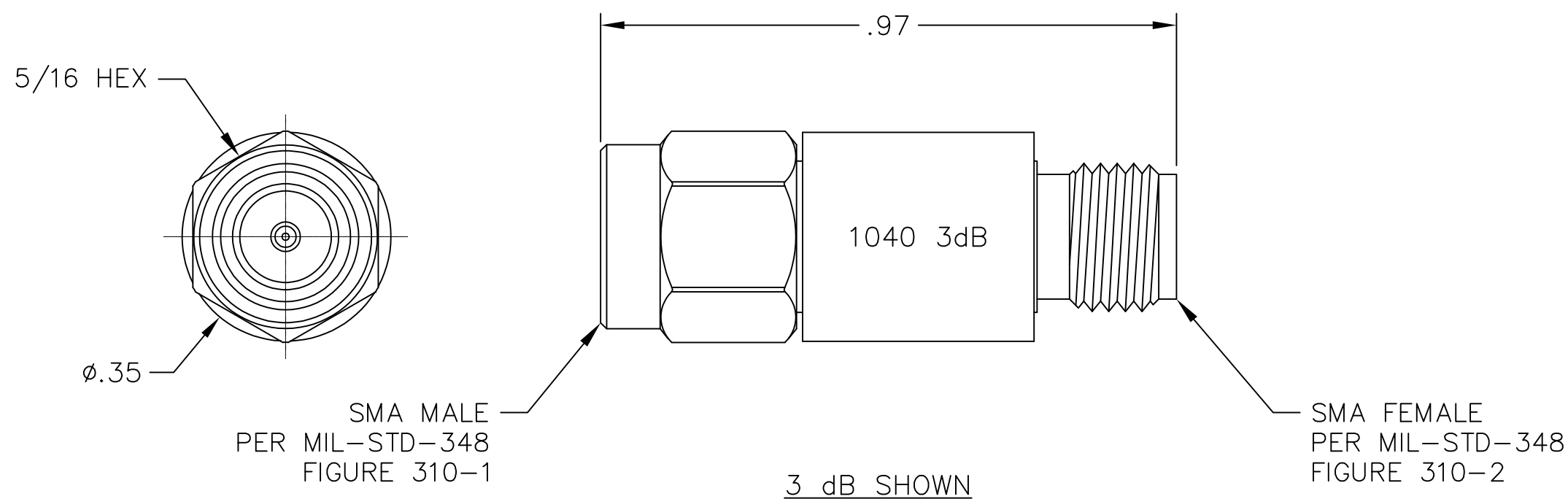


REV	ECO	DATE
001	26066	5/22/2019
002	58127	1/5/2022




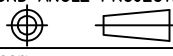
NOTES:

1. MATERIAL & FINISH:

- 1.1 HOUSING & COUPLING NUT: PASSIVATED STAINLESS STEEL
- 1.2 CENTER CONTACTS:
  - 1.2.1 MALE: GOLD PLATED BRASS
  - 1.2.2 FEMALE: GOLD PLATED BERYLLIUM COPPER
- 1.3 MARKING: 1040 XXdB  
(XX VALUE CAN BE SINGLE OR DOUBLE DIGITS)

2. SPECIFICATIONS:

- 2.1 FREQUENCY RANGE: DC TO 4 GHz
- 2.2 IMPEDANCE: 50 OHMS NOMINAL
- 2.3 ATTENUATION ACCURACY:
  - 2.3.1 1 TO 2 dB:  $\pm 0.35$  dB
  - 2.3.2 3 TO 6 dB:  $\pm 0.40$  dB
  - 2.3.3 7 TO 20 dB:  $\pm 0.55$  dB
- 2.4 VSWR (MAX): 1.18:1
- 2.5 INPUT POWER (MAX): 2 WATTS (CW) AT +25°C
- 2.6 OPERATING TEMP. RANGE: -65°C TO +85°C

 <p>NOTICE: The information in this drawing is PROPRIETARY and must not be used without the permission of Cinch Connectivity Solutions. It may contain data whose export is restricted. Verify status prior to exporting.</p> <p>INTERPRET DRAWING IN ACCORDANCE WITH ASME Y14.5-2018</p>	Model No. CGA-1040-XX-SMA-02	<b>MIDWEST MICROWAVE</b>		
	RoHS2 <input checked="" type="checkbox"/> 2015/863/EU	Cage Code 34078	Title: SMA ATTENUATOR 1-20 dB 2 WATTS, DC-4 GHz	
	UNLESS OTHERWISE SPECIFIED UNITS: INCH	3RD ANGLE PROJECTION 	Drawing No. CGA-1040-XX-SMA-02-01	Rev. 002
	.XX $\pm$ .02 .XXX $\pm$ .005 ANGLES $\pm$ 2°	Engineer: M. DVORAK Date: 5/22/2019	SIZE A	DO NOT SCALE DRAWING
		Workmanship Std:	SHEET 1 OF 1	