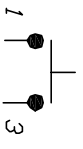
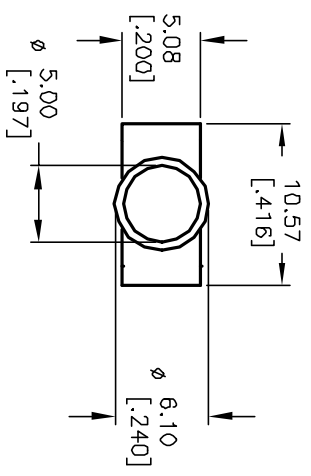


RECOMMENDED P.C.B. LAYOUT



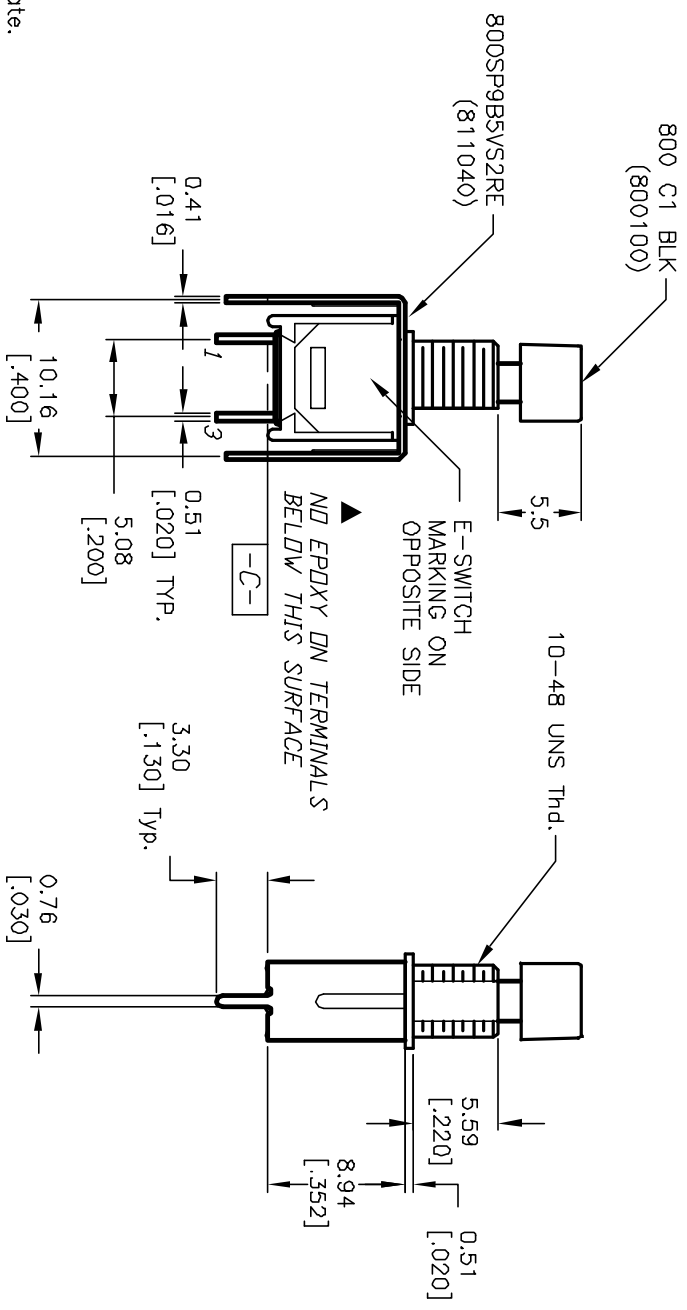
CIRCUIT: SPDT

| | |
|-----------------|------|
| SWITCH FUNCTION | |
| OFF | <DN> |

< > =MOMENTARY

NOTES:

1. ALL DIMENSIONS IN MM [INCH]
2. GENERAL TOLERANCE: X.X=±0.4 X.XX=±0.25
3. TERM. NDS. FOR REF. ONLY
4. RATING: 0.4 (VA) max. @20VAC or DC
5. FIXED TERM. & MOVING CONTACT:
Copper Alloy w/GOLD plate over Nickel plate.
6. CONTACT RESISTANCE: 20mILLI-ohms initial @2-4VDC.
7. ELECTRICAL LIFE: 60,000 make-and-break cycles at full load.
8. INSULATION RESISTANCE: 1,000M ohm min.
9. DIELECTRIC STRENGTH: 1000V RMS @sed level
10. OPERATING TEMP.: -30°C to 85°C



E-SWITCH®

| | | | | | | | | | | |
|---|---------|-------------------------|--------|------|-----------------------------|-------|--------|----|----------|-----|
| REV. | ECN No. | DESCRIPTION | DATE | CHKD | TITLE | SCALE | DATE | DR | DWG | REV |
| A | 11958 | RELEASED FOR PRODUCTION | 2/7/02 | CJB | 800 SP-9 B5 VS2 R E /C1 BLK | 2:1 | 2/7/02 | CB | X T0095P | A |
| <p>THE INFORMATION CONTAINED IN THIS DOCUMENT IS PROPRIETARY TO E-SWITCH AND IS NOT TO BE COPIED OR TRANSMITTED</p> | | | | | | | | | | |