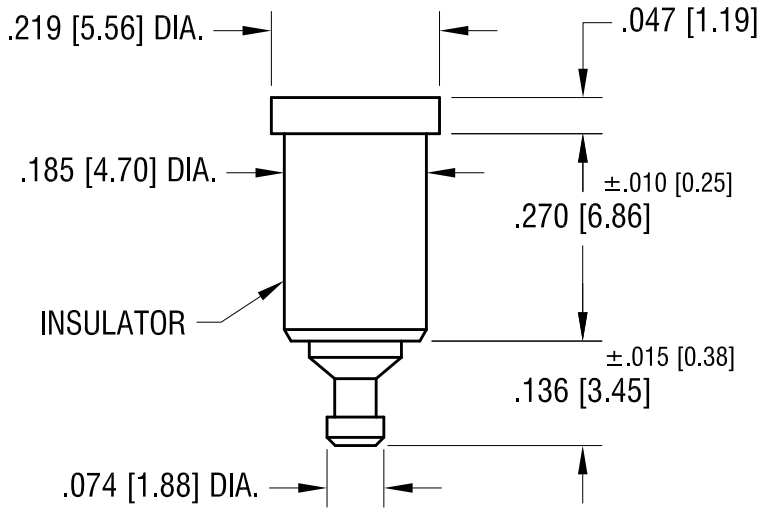
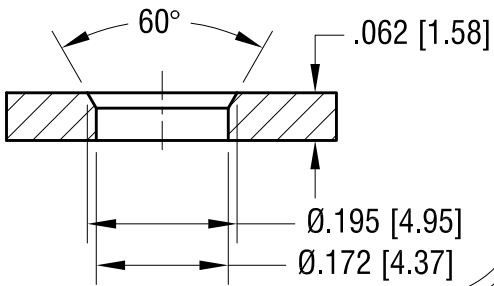


THIS DOCUMENT IS THE PROPERTY OF KEYSTONE ELECTRONICS CORP. AND SHALL NOT BE REPRODUCED, DISTRIBUTED OR USED AS A BASIS FOR MANUFACTURE WITHOUT PRIOR WRITTEN PERMISSION FROM KEYSTONE ELECTRONICS CORP.

ACTUAL SIZE



MTG HOLE DETAIL



PART NO.	COLOR
11010	WHITE
11010-R	RED
11010-B	BLACK

NOTES:

1. SPRING: MAT'L - BERYLLIUM COPPER (QQ-C-533)
2. BODY: MAT'L - BRASS
3. BUSHING: MAT'L - PTFE

KEYSTONE ELECTRONICS CORP.			
www.keyelco.com • NEW HYDE PARK NY 11040 • Tel (516)328-7500			
PART NAME			
PTFE INSULATED TEST JACK			
MATERIAL			
AS NOTED			
FINISH		DRN BY	DATE
GOLD PLATE		NT	7.10.07
		APP'D	SCALE
		RH	4X
DATE	CHANGE AS PER ECN 08-177	REV.	A
11.17.08			
TOLERANCES		INCH	[MM]
DECIMAL		± .005	[± 0.13]
ANGULAR		± 1°	
UNLESS OTHERWISE SPECIFIED		CODE	C
		DWG NO.	11010-

DATE	CHANGE AS PER ECN 08-177	REV.	A
11.17.08			