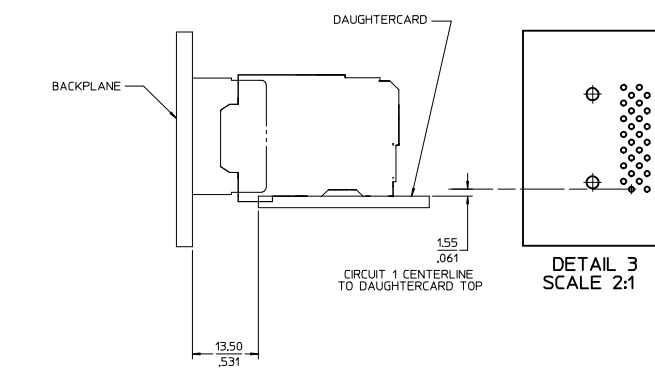
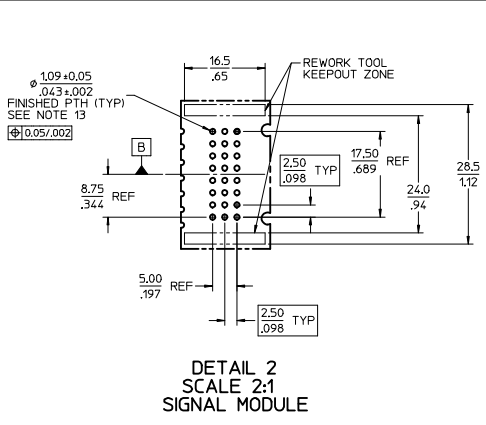
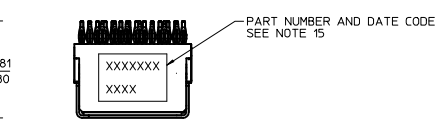
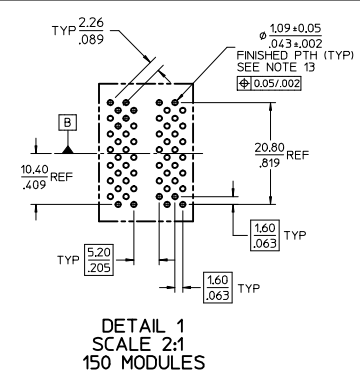
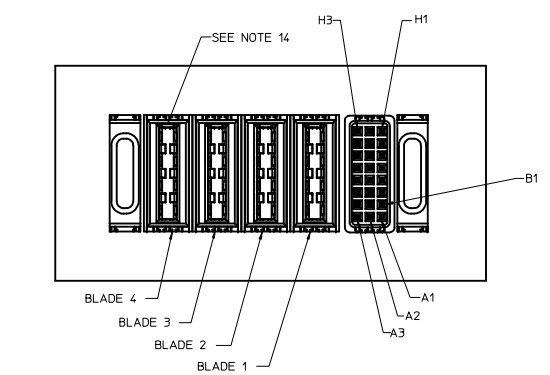
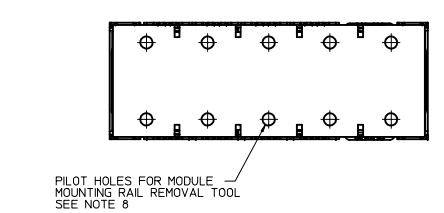
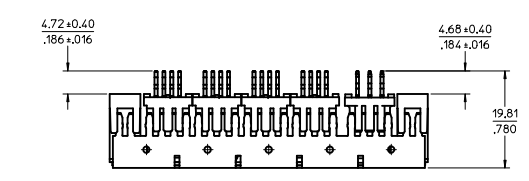
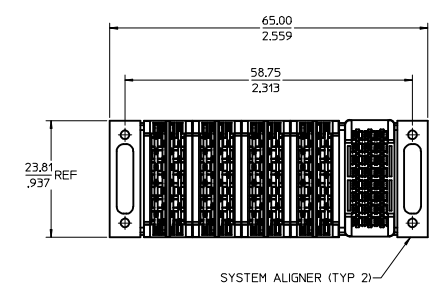
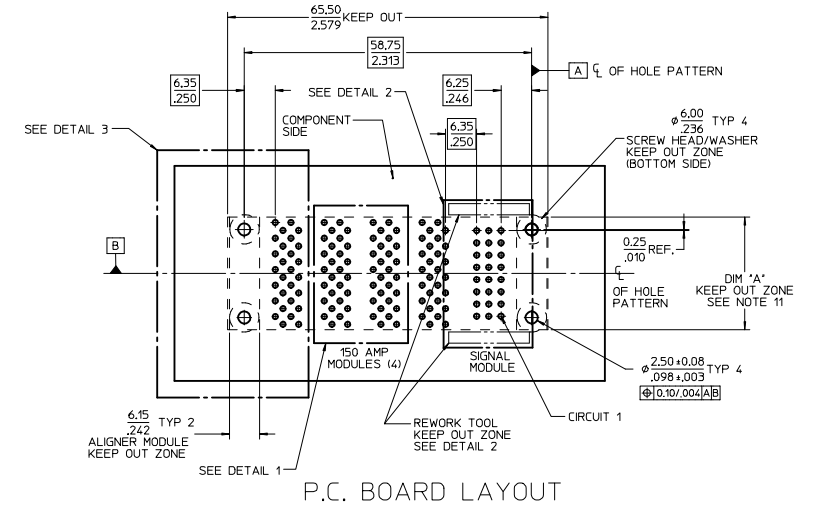


ITEM NUMBER	PART DESCRIPTION
75541-1004	TIN ONLY PRESS FIT TAILS



DETAIL 3 SCALE 2:1

- NOTES:
- MATERIAL:
    - HOUSINGS: HIGH TEMPERATURE PLASTIC (LCP OR EQUIVALENT)
    - TERMINALS: HIGH CONDUCTIVITY COPPER ALLOY
    - PLATING: 0.00127/0.00055 NICKEL OVERALL WITH 0.00254/0.00100 SELECTIVE TIN ON SOLDER TAILS AND 0.000762/0.00030 SELECTIVE GOLD ON CONTACT AREA.
    - ALIGNERS: ZINC DIE CAST WITH CLEAR CHROMATE FINISH
    - RAILS: STAINLESS STEEL
    - LUBRICATION: EB1 IN CONTACT AREA
  - MODULES ARE ASSEMBLED TO RAILS.
  - PACKAGING: ASSEMBLIES TO BE TRAY PACKED PER PACKAGING SPEC PK-75541-\*\*\*\*.
  - INDIVIDUAL MODULES ARE RATED FOR VOLTAGE AND CURRENT RATINGS PER PS-75431-999.
  - PC BOARD REQUIRES PRESS FIT HOLES. SEE PC BOARD LAYOUT.
  - PC BOARD TO BE 3.18/1.125 MIN THICK.
  - PRODUCT TO MEET RoHS REQUIREMENTS.
  - MODULE MOUNTING RAIL TO BE REMOVED AFTER PRESSING THE ASSEMBLY INTO THE PC BOARD WITH TOOL 62202-2200. PER APPLICATION SPEC AS-75541-100.
  - THE AVERAGE INSERTION FORCE REQUIRED TO INSERT THE PCB IS 10.88kN/2250lbf.
  - RECEPTACLE MATES TO MOLEX PLUG P/N 75555-1004.
  - KEEP OUT ZONE DIMENSION 'A': 25.00/.984 ON PCB SURFACE 26.00/1.024 AT 3.50/.138 ABOVE PCB SURFACE 46.00/1.811 AT 9.00/.354 ABOVE PCB SURFACE
  - ALIGNER MODULE SCREWS DELIVERED WITH CONNECTOR ASSEMBLY (4 PER ASSEMBLY): -#2-56 UNC-2A, ZINC PLATED STEEL, 12.70/500 LONG, 4.2/1.6 DIA PAN HEAD TORX DRIVE. MOLEX P/N 73774-4006. RECOMMENDED TORQUE: 0.20 N-m (1.77 lb-in)
  - PLATED THRU HOLE DIMENSIONS:  $\phi 1.09\pm 0.05 / .043\pm 0.002$  FINISHED (PTH) TYP  $\phi 1.200\pm 0.013 / .0472\pm 0.005$  DRILL 0.025/.001 MIN COPPER PLATE THICKNESS
  - HOUSING CORE GEOMETRY MODIFIED ON REV B4 AS SHOWN.
  - PART NUMBER AND DATE CODE (2 DIGIT WEEK, 2 DIGIT YEAR) LOCATED AS SHOWN.



P.C. BOARD LAYOUT

INITIAL RELEASE EC NO: UCP2014-2356 DRAWING: CHYK/BANDURA APPROVED: APPAR/APATEL DATE: 2014/01/20 DATE: 2014/01/21	QUALITY SYMBOLS	GENERAL TOLERANCES (UNLESS SPECIFIED)	DIMENSION STYLE	SCALE	DESIGN UNITS	THIRD ANGLE PROJECTION	
	$\nabla=0$ $\nabla=0$ $\nabla=0$	4 PLACES ±--- ±--- 3 PLACES ±--- ±.010 2 PLACES ±.25 ±.015 1 PLACE ±.38 ±--- 0 PLACE ± ±	MM/IN	MM/IN	2:1	METRIC	
	DRAWN BY: GB CHECKED BY: BANDURA APPROVED BY: APATEL DATE: 2013/12/02 DATE: 2014/01/20 DATE: 2014/01/21	MATERIAL NO. <b>75541-1004</b>	DOCUMENT NO. <b>SD-75541-104</b>	TITLE <b>RECEPTACLE TO RAIL ASSY RECEPTACLE SIDE POWERMASS</b> 			SHEET NO. 1 OF 1