

# Customer Information Sheet

DRAWING No.: M22-634XX42R

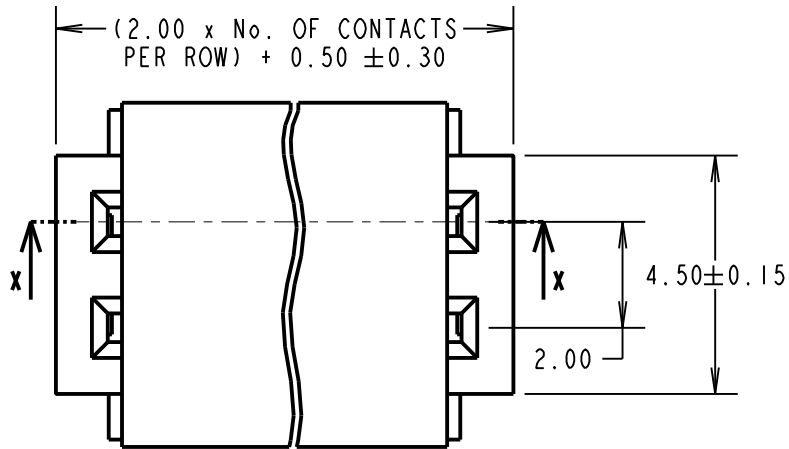
IF IN DOUBT - ASK

©

NOT TO SCALE

THIRD ANGLE PROJECTION

ALL DIMENSIONS IN mm



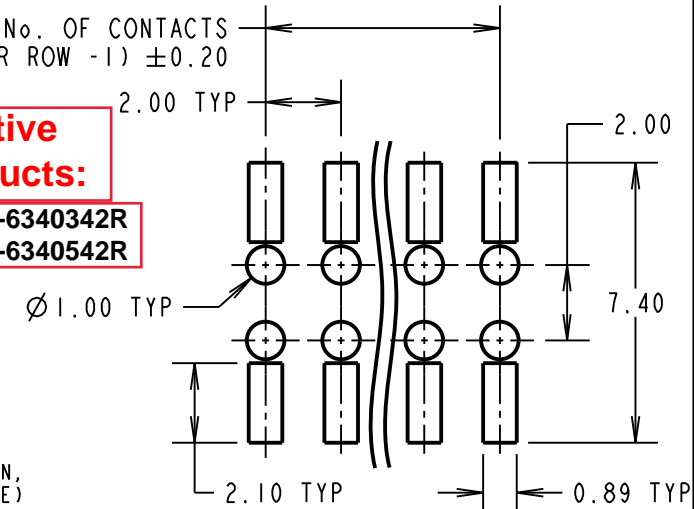
**SPECIFICATIONS:**

**MATERIAL:**  
 Moulding = PA9T, UL94V-0, BLACK  
 CONTACT = PHOSPHOR BRONZE  
**FINISH:**  
 NICKEL ALL OVER, 100% TIN ON TAILS,  
 GOLD FLASH ON CONTACT AREA.  
**ELECTRICAL:**  
 CURRENT RATING = 2A  
 INSULATION RESISTANCE = 1000MΩ MIN.  
 CONTACT RESISTANCE = 20mΩ MAX.  
 VOLTAGE PROOF = 500V AC/DC  
**MECHANICAL:**  
 INSERTION FORCE = 1.96N MAX  
 WITHDRAWAL FORCE = 0.20N MIN.  
 DURABILITY = 300 CYCLES  
**ENVIRONMENTAL:**  
 OPERATING TEMPERATURE = -55°C TO +105°C  
**PACKING:**  
 REEL  
 FOR COMPLETE MECHANICAL/ELECTRICAL SPECIFICATION,  
 SEE COMPONENT SPECIFICATION CO18XX (LATEST ISSUE)

2.00 x (No. OF CONTACTS PER ROW - 1) ±0.20

**Active products:**

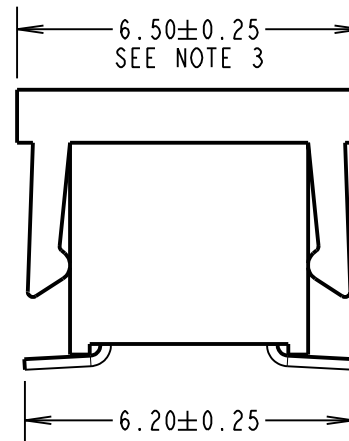
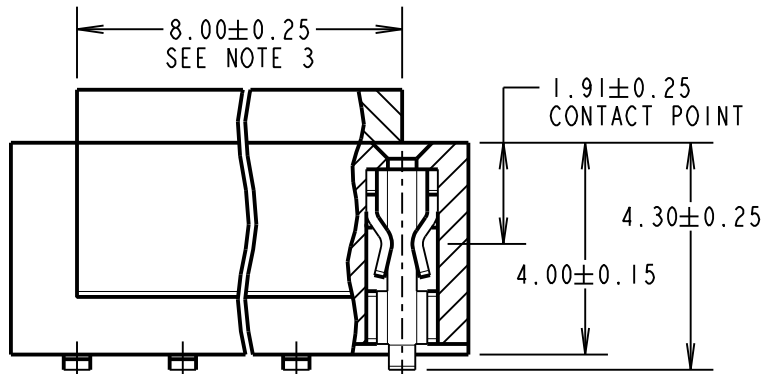
**M22-6340342R**  
**M22-6340542R**



RECOMMENDED PCB LAYOUT  
 (TOLERANCE = ±0.05)

**NOTES:**

1. COPLANARITY OF CONTACTS TO BE 0.10mm MAX.
2. FOR TAPE AND REEL DETAILS, SEE SHEET 4.
3. FOR M22-6340342R, 5.00 x 5.00 SQUARE MYLAR TAPE IS USED INSTEAD OF PICK AND PLACE CAP.



**OBSOLETE**  
 All other size/finish combinations not listed above

ORDER CODE:

**M22-634XX42R**

No. OF CONTACTS PER ROW:  
 03, 04, 05

MSP	16	14.08.17	20547
NAME	ISS.	DATE	C/NOTE
APPROVED:		M. PERREN	
CHECKED:		S. BENNETT	
DRAWN:		W. J. BOURNE	
CUSTOMER REF.:			
ASSEMBLY DRG:			

**HARWIN**

www.harwin.com  
 technical@harwin.com

THIS DRAWING AND ANY INFORMATION OR DESCRIPTIVE MATTER SET OUT HEREON ARE CONFIDENTIAL AND COPYRIGHT PROPERTY OF THE HARWIN GROUP AND MUST NOT BE DISCLOSED, LOANED, COPIED OR USED FOR MANUFACTURING, TENDERING OR FOR ANY OTHER PURPOSE WITHOUT THEIR WRITTEN PERMISSION.

**TOLERANCES**  
 X. = ±1mm  
 X.X = ±0.50mm  
 X.XX = ±0.10mm  
 X.XXX = ±0.01mm  
 ANGLES = ±5°  
 UNLESS STATED

**MATERIAL:**

SEE ABOVE

**FINISH:**

SEE ABOVE

**S/AREA:**

mm<sup>2</sup>

**TITLE:**

2mm PITCH DIL SMT  
 LOW PROFILE SKT ASSEMBLY  
 IN TAPE AND REEL

**DRAWING NUMBER:**

**M22-634XX42R**

SHT  
 3  
 OF  
 4

# Customer Information Sheet

DRAWING No.: M22-634XX42R

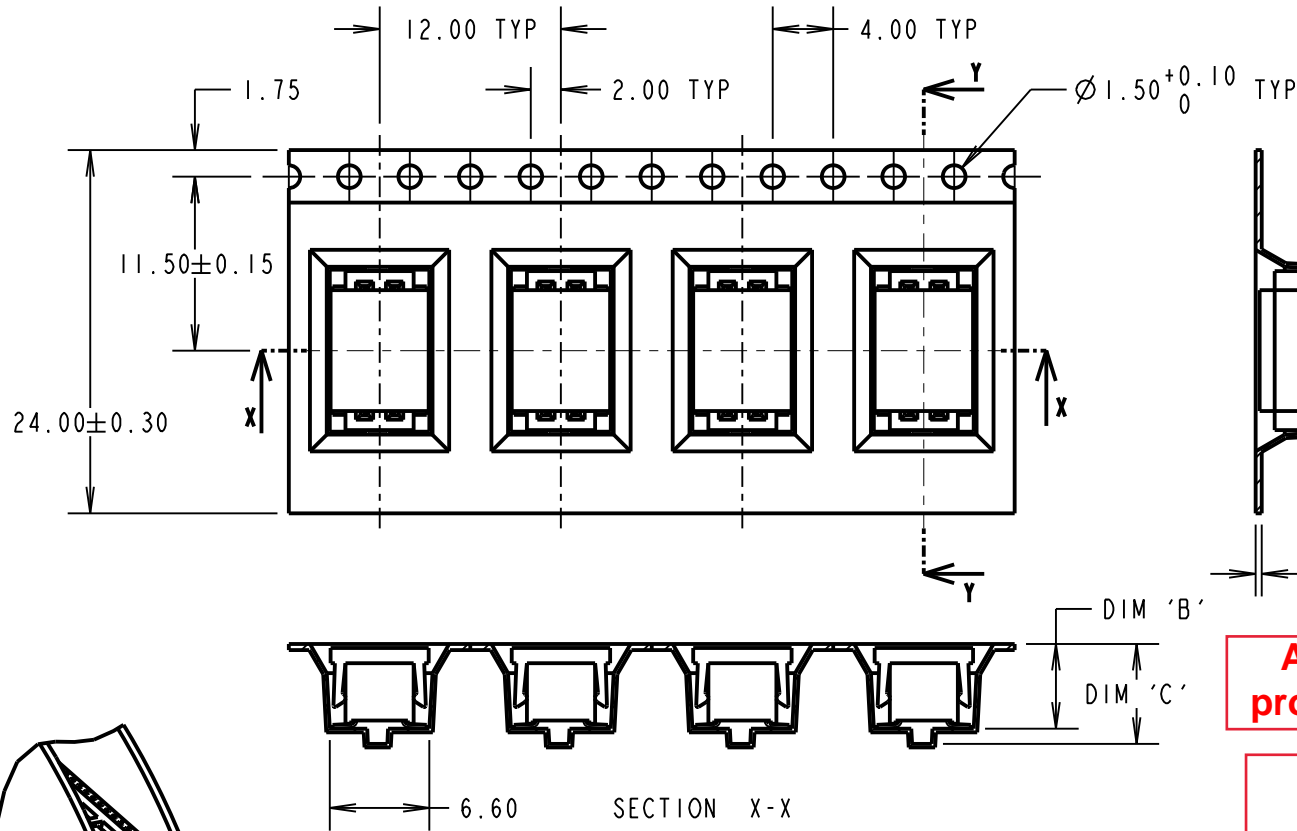
IF IN DOUBT - ASK

©

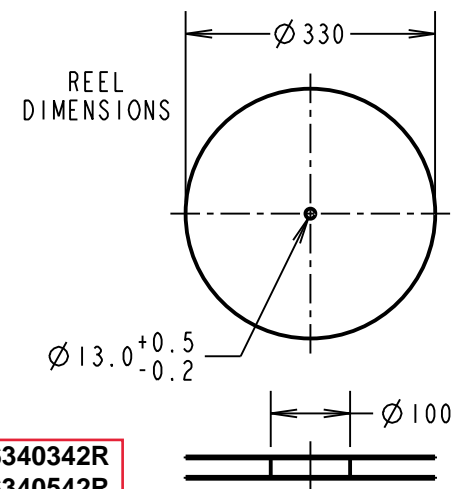
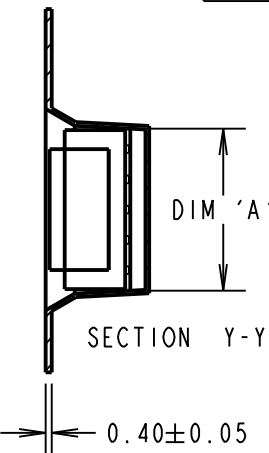
NOT TO SCALE

THIRD ANGLE PROJECTION

ALL DIMENSIONS IN mm



PART No.	DIM 'A'	DIM 'B'	DIM 'C'
M22-6340342R	8.30	5.60	6.60
<del>M22-6340442R</del>	<del>8.90</del>	<del>6.00</del>	<del>6.90</del>
M22-6340542R	10.70	5.60	6.60



**Active products:** M22-6340342R  
M22-6340542R

**OBSOLETE**  
All other size/finish combinations not listed above

MSP	16	14.08.17	20547
NAME	ISS.	DATE	C/NOTE
APPROVED:		M. PERREN	
CHECKED:		S. BENNETT	
DRAWN:		W. J. BOURNE	
CUSTOMER REF.:			
ASSEMBLY DRG:			

ORDER CODE: **M22-634XX42R**

No. OF CONTACTS PER ROW: 03, 04, 05

- NOTES:
- FOR CONNECTOR DIMENSIONS, SEE SHEET 3.
  - QUANTITY OF COMPONENTS PER REEL = 800.
  - PRODUCT IS TAPE AND REELED IN ACCORDANCE WITH ELECTRONICS INDUSTRIES ASSOCIATION EIA-481.



**HARWIN**

www.harwin.com  
technical@harwin.com

THIS DRAWING AND ANY INFORMATION OR DESCRIPTIVE MATTER SET OUT HEREON ARE CONFIDENTIAL AND COPYRIGHT PROPERTY OF THE HARWIN GROUP AND MUST NOT BE DISCLOSED, LOANED, COPIED OR USED FOR MANUFACTURING, TENDERING OR FOR ANY OTHER PURPOSE WITHOUT THEIR WRITTEN PERMISSION.

TOLERANCES  
X. = ±1mm  
X.X = ±0.50mm  
X.XX = ±0.10mm  
X.XXX = ±0.01mm  
ANGLES = ±5°  
UNLESS STATED

MATERIAL: SEE SHEET 3  
FINISH: SEE SHEET 3  
S/AREA: mm<sup>2</sup>

TITLE: 2mm PITCH DIL SMT LOW PROFILE SKT ASSEMBLY IN TAPE AND REEL  
DRAWING NUMBER: **M22-634XX42R**  
SHT 4 OF 4