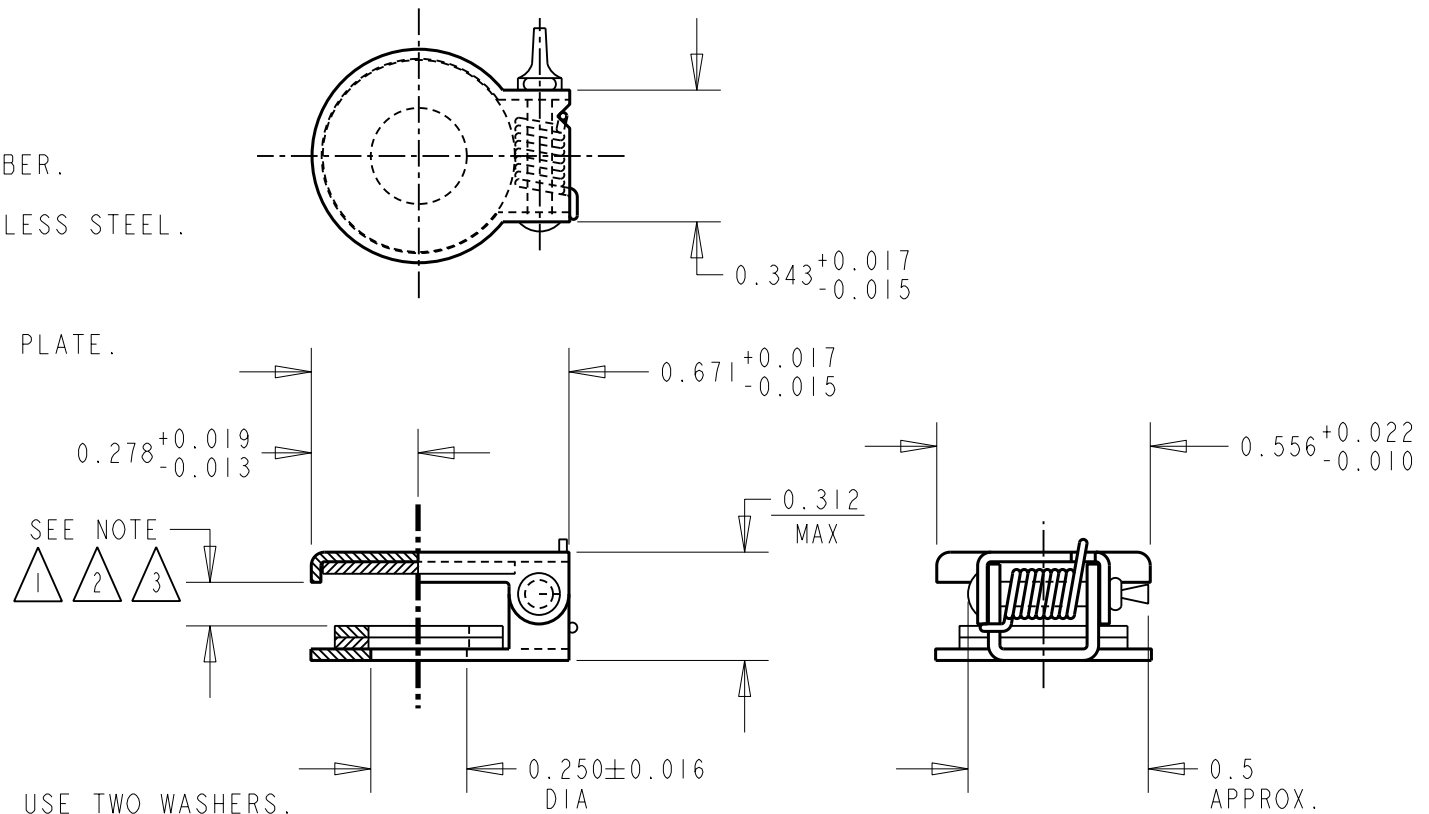


MATERIALS:

1. COVER AND BASE-STEEL - BRIGHT NICKEL PLATE.
2. GASKET - SYNTHETIC RUBBER.
3. TORSION SPRING - STAINLESS STEEL.
4. AXLE - STAINLESS STEEL
5. WASHERS-STEEL - NICKEL PLATE.



NOTES:

- 1 0.125 APPROX. HIGH HEAD, USE TWO WASHERS.
- 2 0.156 APPROX. HIGH HEAD, USE ONE WASHER.
- 3 0.188 APPROX. HIGH HEAD, USE NO WASHERS.

CUSTOMER DRAWING

| | | | | | | | | | | | |
|-----------|------------|---------|----|------|---|--|-------|----------------|---------------|---------------------|-----|
| | | | | | ★ STAR SYMBOL DENOTES CRITICAL DIMENSION | THIS DRAWING DESCRIBES A DESIGN CONSIDERED PROPRIETARY IN NATURE, DEVELOPED AND MANUFACTURED BY SWITCHCRAFT INC. AND IS RELEASED ON A CONFIDENTIAL BASIS FOR IDENTIFICATION PURPOSES ONLY. | | | | | |
| | | | | | UNLESS OTHERWISE SPECIFIED | SIZE | WIDTH | MULT | LBS/M | TEMPER | |
| | | | | | 1. ALL DIMENSIONS IN INCHES - TWO PLACE DECIMALS ± 0.01 - THREE PLACE DECIMALS ± 0.005 - ANGLES $\pm 1^\circ$ - ALL DIA. CONCENTRIC WITHIN 0.005 T.I.R. | FINISH | | MATERIAL | | | |
| | | | | | 2. FEATURES ON THE SAME CENTERLINE MUST BE ALIGNED WITHIN ± 0.002 | SPEC No. | | SPEC No. | | | |
| | | | | | 3. REMOVE ALL BURRS | FIRST USED ON | | SCALE | | Switchcraft® | |
| | | | | | | | | 2 : 1 | | | |
| E | ECO #22434 | 11-6-98 | RC | JF | | DATE DRAWN | BY | CHKD | APVD | | |
| | | | | | | 4-22-64 | IRT | CJW 4-22-64 | LG 4-23-64 | | |
| REV | ECO NUMBER | DATE | BY | APVD | | NAME | | | | PART No. | REV |
| | | | | | DO NOT SCALE DRAWING | TIP JAX COVER ASSY (NICKEL PLATED) | | | | 612 | E |
| REVISIONS | | | | | | | | | | | |