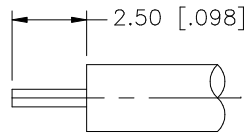
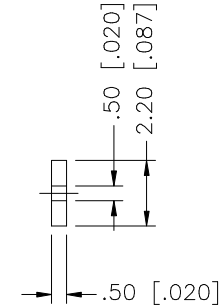
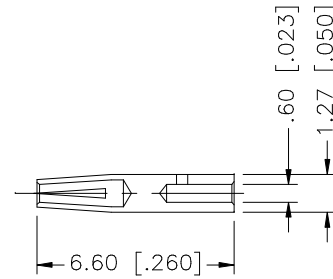
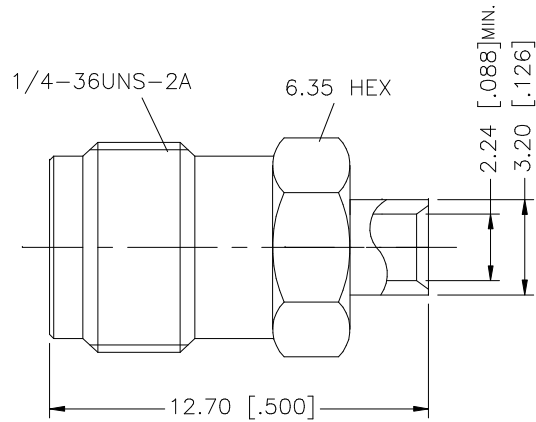


| REV. | DATE | DESCRIPTION |
|------|----------|---------------------------------|
| NC | 04/31/03 | INITIAL RELEASE |
| A | 10/27/05 | MODIFY - INSULATOR NOW INTERNAL |



RECOMMENDED CABLE STRIPPING DIMS.



NOTE:
1. CONTACT PIN TO SOLDER

| | | | | | | | | | | |
|---|-------------|-------------|---------|-----|--|-------------------------------|--------|--|--|--|
| 8 | | | | | UNLESS OTHERWISE SPECIFIED DIMENSIONS ARE IN MILLIMETERS. DIMENSIONS IN [] ARE IN INCHES AND FOR CUSTOMER REFERENCE ONLY. | APPROVALS | DATE | Amphenol Connex | | |
| 7 | | | | | | DRAWN | G.R.S. | | | |
| 6 | | | | | UNLESS OTHERWISE SPECIFIED TOLERANCES FOR MILLIMETERS ARE: 0.5 - 8mm ± 0.20mm 8 - 30mm ± 0.40mm 30 - 120mm ± 0.50mm | CHECKED | | PART DESCRIPTION SMA DIRECT SOLDER JACK (FOR .085", .086" CABLE) | | |
| 5 | | | | | | ISSUED | | | | |
| 4 | INSULATOR | TEFLON | NATURAL | 1 | UNLESS OTHERWISE SPECIFIED TOLERANCES FOR INCHES ARE: .020 - .315 = ± 0.007" .315 - 1.180 = ± 0.015" 1.180 - 4.724 = ± 0.020" | SHEET | 1 OF 1 | PART NO. 132103 | | |
| 3 | CONTACT PIN | BER. COPPER | GOLD | 1 | | | | | | |
| 2 | INSULATOR | TEFLON | NATURAL | 1 | | | | DWG. NO. 132103.DWG | | |
| 1 | BODY | BRASS | GOLD | 1 | | | | | | |
| | DESCRIPTION | MATERIAL | FINISH | QTY | DO NOT SCALE DRAWING | CAD FILE C:/132/132103.DWG | | | | |