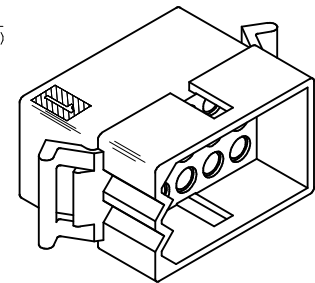
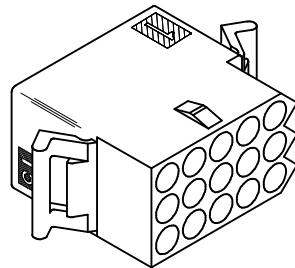


RECEPTACLE

PLUG



REMOVE 1375-R6 DEC NO: UCP2015-5225 DRWN: J.MONTI 2015/06/11 CHKD: JHK/PPER 2015/06/11 APPR: F.SMITH 2015/06/19	QUALITY SYMBOLS ▽=0 ▽=0 ▽=0	GENERAL TOLERANCES (UNLESS SPECIFIED)		DIMENSION STYLE IN/MM	SCALE 2:1	DESIGN UNITS INCH	THIRD ANGLE PROJECTION
		4 PLACES ± --- ± --- 3 PLACES ± --- ± .010 2 PLACES ± 0.25 ± .014 1 PLACE ± 0.35 ± --- 0 PLACE ± --- ± ---	mm INCH DRAWN BY DATE KBW 01/14/1989 CHECKED BY DATE RW 01/14/1989 APPROVED BY DATE F.SMITH 2015/06/19	TITLE .093/(2.36) HOUSINGS PLUG & RECEPTACLE 15 CIRCUIT, .198/(5.03)CL	MATERIAL NO. SEE CHART	DOCUMENT NO. SD-1375-*	SHEET NO. 1 OF 2
REV AE2	DESCRIPTION REMOVE 1375-R6	ANGULAR ±1/2°		DRAFT WHERE APPLICABLE MUST REMAIN WITHIN DIMENSIONS			

PLUG			RECEPTACLE		
ORDER NO	ENG NO	PACKAGING	ORDER NO	ENG NO	PACKAGING
03-09-2151	I375-P	PK-1375-001	03-09-1151	I375-R	PK-1375-001
03-09-2159	I375-P4	PK-1375-002	03-09-1152	I375-R1	PK-1375-001
03-09-2158	I375-P7	PK-1375-001	03-09-1157	I375-R6-1	PK-1375-001
			03-09-1153	I375-R2	PK-1375-001

LEGEND FOR PLUG:

I375-P***

- OPTIONS:**
- BLANK = W/O EARS, W/ PULL TABS, W/O LOCK WINDOWS
 - 2 = W/ STANDARD EARS, W/O PULL TABS, W/O LOCK WINDOWS
 - 4 = W/ PREBENT EARS, W/O PULL TABS, W/ LOCK WINDOWS
 - 6 = W/O EARS, W/O PULL TABS, W/ LOCK WINDOWS
 - 7 = W/O EARS, W/ PULL TABS, W/ LOCK WINDOWS
 - 8 = W/ PREBENT EARS, W/O PULL TABS, W/O LOCK WINDOWS

COLOR:

- BLANK = NATURAL COLOR
 AM = AMBER BK = BLACK BU = BLUE
 BN = BROWN GY = GRAY GN = GREEN
 OR = ORANGE RD = RED YW = YELLOW

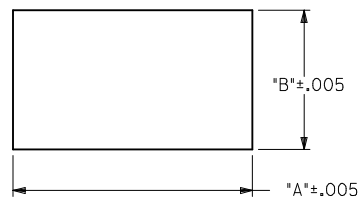
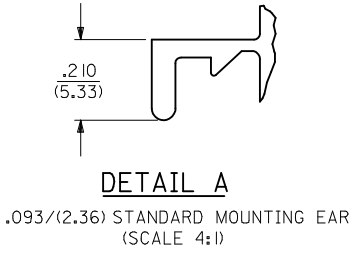
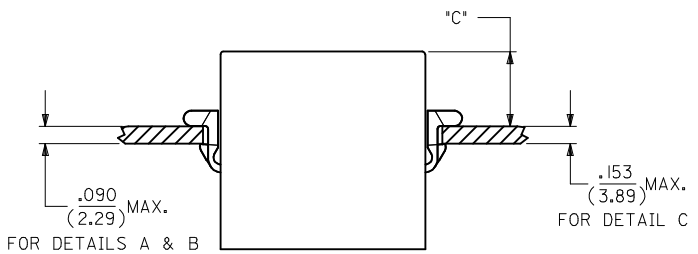
LEGEND FOR RECEPTACLE:

I375-R***

- OPTIONS:**
- BLANK = W/ PREBENT EARS, W/O LOCK RAMPS
 - 1 = W/O EARS, W/O LOCK RAMPS
 - 2 = W/PREBENT EARS, W/LOCK RAMPS
 - 6-1 = W/O EARS, W/ LOCK RAMPS

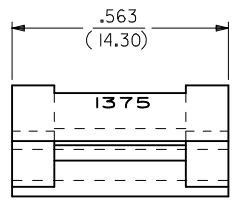
COLOR:

- BLANK = NATURAL COLOR
 AM = AMBER BK = BLACK BU = BLUE
 BN = BROWN GY = GRAY GN = GREEN
 OR = ORANGE RD = RED YW = YELLOW



RECOMMENDED PANEL OPENING

HOUSING	DIM. "A"	DIM. "B"	"C" PREBENT EAR	"C" STANDARD EAR	"C" SPECIAL EAR
PLUG	1.343/(34.1)	.760/(19.30)	.40/(10.2)	.36/(9.1)	
RECEPT. W/ RAMPS	1.240/(31.50)	.725/(18.42)	.41/(10.4)	.37/(9.4)	.31/(7.8)
RECEPT. W/O RAMPS	1.240/(31.50)	.655/(16.64)	.41/(10.4)	.37/(9.4)	.31/(7.8)



DETAIL B

.093/(2.36) PREBENT MOUNTING EAR (SCALE 4:1)

NOTES :

1. MATERIAL : NYLON TYPE 6/6, 94V-2.
2. FINISH : NONE.
3. PRODUCT SPECIFICATION : PS-02-09.
4. PACKAGING INFORMATION : SEE CHART.
5. ETCHED CIRCUIT I.D. NUMBERS ON SIDE OF HOUSINGS TO BE PRESENT ON PARTS FROM TOOLS BUILT AFTER 2/28/94.
6. PARTS CONFORM TO CLASS B REQUIREMENTS OF COSMETIC SPECIFICATION PS-45499-002.

SEE SHEET 1 EC NO: UCP2015-5225 DRWN: JNONT 2015/06/11 CHKD: HKIPPER 2015/06/11 APPR: FSMITH 2015/06/19	QUALITY SYMBOLS = 0 = 0 = 0	GENERAL TOLERANCES (UNLESS SPECIFIED)		DIMENSION STYLE IN/MM		SCALE 1:1	DESIGN UNITS INCH	THIRD ANGLE PROJECTION		
				mm	INCH	DRAWN BY KBW	DATE 01/14/1989	TITLE .093/(2.36) HOUSINGS PLUG & RECEPTACLE 15 CIRCUIT..198/(5.03)CL		
				4 PLACES ± --- ± ---	3 PLACES ± --- ± .010	CHECKED BY RW	DATE 01/14/1989			
				2 PLACES ± 0.25 ± .014	1 PLACE ± 0.35 ± ---	APPROVED BY FSMITH	DATE 2015/06/19	 DOCUMENT NO. SD-1375-* SHEET NO. 2 OF 2		
		0 PLACE ± --- ± ---	ANGULAR ±1/2°		DRAFT WHERE APPLICABLE MUST REMAIN WITHIN DIMENSIONS THIS DRAWING CONTAINS INFORMATION THAT IS PROPRIETARY TO MOLEX INCORPORATED AND SHOULD NOT BE USED WITHOUT WRITTEN PERMISSION					