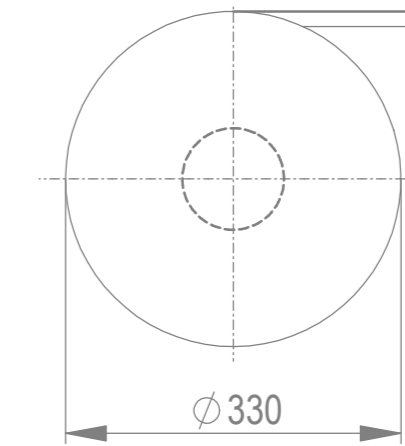
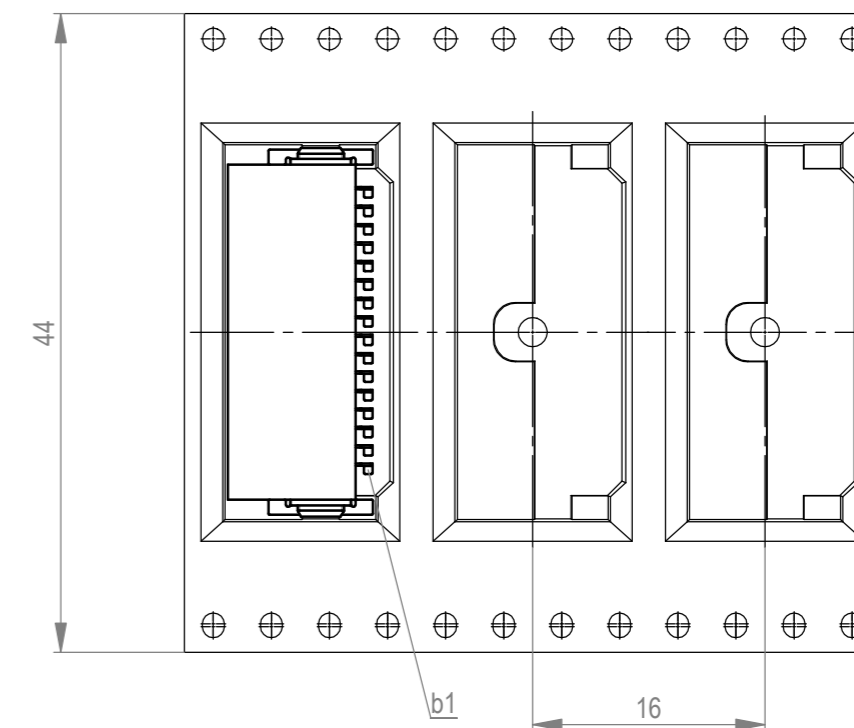


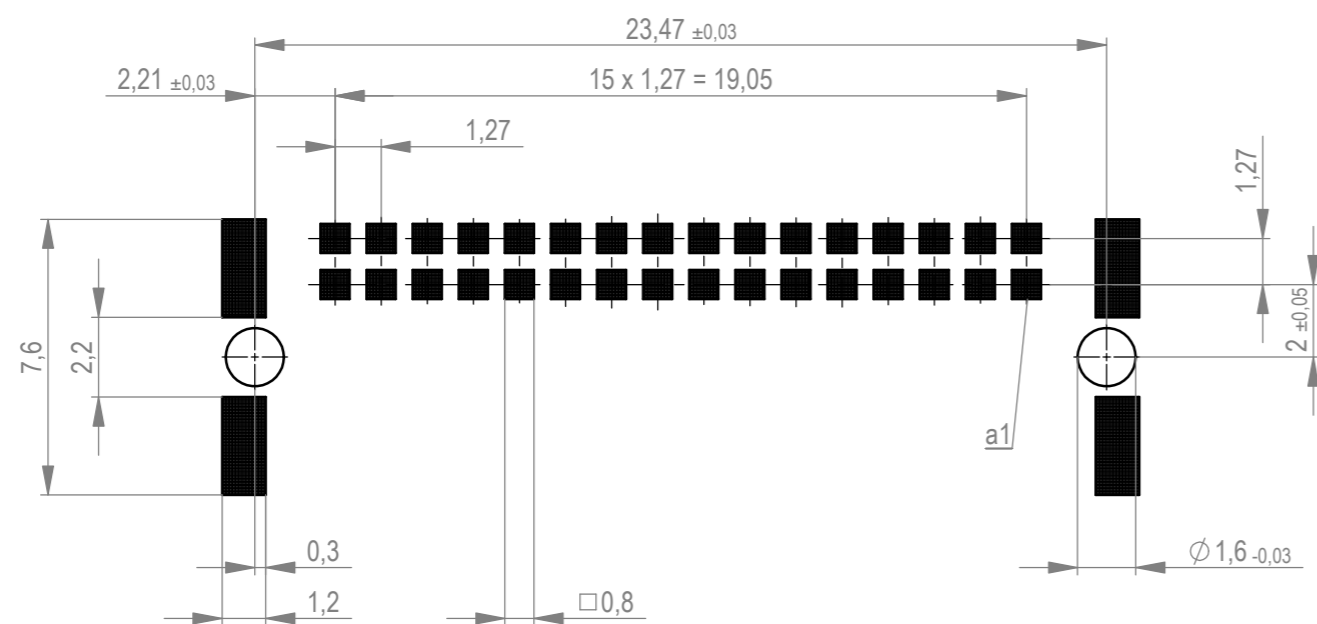
Verpackt im Gurt in Anlehnung an DIN IEC 60286-3  
 tape on reel packaging according to DIN IEC 60286-3  
 Verpackungseinheit: 560 Stück  
 packaging unit: 560 pcs



Abspulrichtung - reel off direction →



Leiterplatten-Layout Vorschlag für SMT  
 PCB-Layout Proposal for SMT



Anforderungsstufe 1  
 performance level 1

Kontaktbereich vergoldet  
 mating area gold plating

Anschlussbereich verzinkt 4-6 µm  
 terminal area 4-6 µm tin plating

Koplanarität der Anschlüsse ≤ 0,1 mm  
 coplanarity area of termination ≤ 0,1 mm

BA7-03 - Standard Bauhöhe  
 type7-03 - Standard Assembly Height

|  |  |          |  |
|--|--|----------|--|
| Dimension no.  | Tolerances   | Scale    | 5:1  |
|  | ISO 8015   | Material |  |
| Customer drawing:  | Subject to modification without prior notice. Drawing will not be updated.             |          | Messerl. SMC-B 32-SMD-BA7-03<br>Male SMC-B 32-SMD-type7-03 |
| All rights reserved. Only for information. To ensure that this is the latest version of this drawing, please contact one of the ERNI companies before using. | ERNI International AG<br>Zürichstrasse 72<br>8306 Brüttisellen - Zürich<br>Switzerland |          |  |
| e  | 18.02.2020   | 354096   | 1  |
| Index  | Date   | Class    | A2   |
|  |  | SMCB     |  |

Wichtigste Voraussetzung dieses Dokuments, Verwertung und Mitteilung dieses Inhalts sind...  
 Die Rechte für den Fall der Patent-, Gebrauchsmarken- oder Geschmacksurteilverletzung vorbehalten.  
 The reproduction, distribution and alteration of this document as well as the communication...  
 in case of any violation the English version shall prevail.