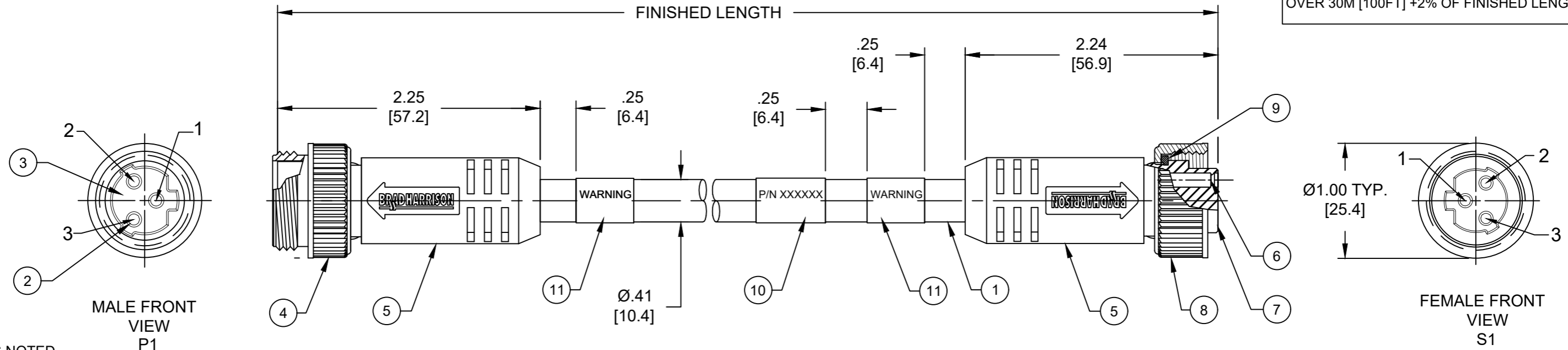


PART NO	ENGINEERING NO.	FINISHED LENGTH
1300102117	113130K13M005	0.5M [1FT 7 IN]
1300102099	113130K13M300	30M [98FT 5 IN]
1300102225	113130K13M750	75M [246FT 1 IN]

CABLE LENGTH TOLERANCES	
<.3M [1FT]:	+19mm-0 [+0.75in-0]
.3 - .9M [1 - 3FT]:	+44.5mm-0 [+1.75in-0]
.9 - 1.8M [3 - 6FT]:	+55.6mm-0 [+2.19in-0]
1.8 - 3.7M [6 - 12FT]:	+88.9mm-0 [+3.50in-0]
3.7 - 7.3M [12 - 24FT]:	+165.1mm-0 [+6.50in-0]
7.3-14.6M [24 - 48FT]:	+317.5mm-0 [+12.50in-0]
14.6 - 30.5M [48-100FT]:	+622.3mm-0 [+24.50in-0]
OVER 30M [100FT]:	+2% OF FINISHED LENGTH

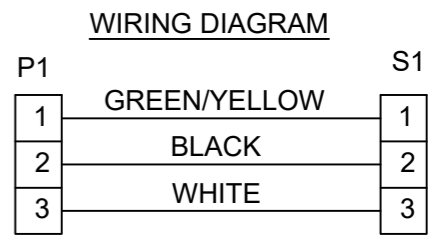


- NOTES:
- MATERIAL: AS NOTED
  - FINISH: AS NOTED
  - ELECTRICAL:  
VOLTAGE: 500V PER IEC60664  
600V PER UL2237  
CURRENT: 13A
  - TEMP RATING: -20°TO +90°C
  - PROTECTION: IP67 (WHEN MATED)
  - COUPLING THREAD: 7/8-16UN
  - UL LISTED FILE: E258922
  - ALL DIMENSIONS ARE FOR REFERENCE UNLESS TOLERANCED OR NOTED OTHERWISE

## PART NO. LEGEND

# 113130K13M010

FINISHED LENGTH  
M005 = 0.5 METER  
M010 = 1 METER  
M100 = 10 METER



ITEM	DESCRIPTION	MATERIAL	FINISH
11	WARNING LABEL	VINYL	BLACK/ORANGE
10	WRAP LABEL	VINYL	BLACK/YELLOW
9	FRICTION RING	NYLON	WHITE
8	FEMALE COUPLING NUT	ZINC DIE-CAST	BLACK E-COAT
7	3P FEMALE INSERT	TPE	BLACK
6	CONTACT SOCKET	COPPER ALLOY	GOLD PLATED
5	OVER MOLD	TPE	BLACK
4	MALE COUPLING NUT	ZINC DIE-CAST	BLACK E-COAT
3	3P MALE INSERT	TPE	BLACK
2	CONTACT PIN	COPPER ALLOY	GOLD PLATED
1	CABLE 16/3 (HI FLEX)	TPE JACKET	YELLOW

CABLE FLEX CHARACTERISTICS:

TORSIONAL FLEX TEST	20 MILLION CYCLES PER MIL-C-13777G
BEND FLEX TEST	20 MILLION CYCLES PER MIL-C-13777G
WELD SLAG RESISTANCE	WOODHEAD STANDARD S-300

FUNCTIONAL SYMBOLS		DIMENSION UNITS		SCALE		CURRENT REV DESC: ITEM 9 DESCRIPTION O-RING CHANGED TO FRICTION RING, UPDATE BORDER	
$F_A=0$	$F_C=0$	INCH/MM		1:1		EC NO: 706622	
$F_P=0$		GENERAL TOLERANCES (UNLESS SPECIFIED)				DRWN: RSTONE 2022/05/11	
						CHK'D: ALEON01 2022/05/13	
						APPR: BWOODMAN 2022/05/17	
						INITIAL REVISION:	
						DRWN: RSTONE 2017/02/09	
						APPR: BWOODMAN 2017/03/02	
						ANGULAR TOL ± --- °	
						THIRD ANGLE PROJECTION	
						DRAWING B-SIZE	
						SERIES 130010	
						MATERIAL NUMBER	
						CUSTOMER	
						SHEET NUMBER	
						1 OF 1	

**molex**

BRAD POWER A-SIZE  
3 POLE, MALE-FEMALE, STRAIGHT TRI-KEY, 16 AWG, TPE HI-FLEX

PRODUCT CUSTOMER DRAWING

DOCUMENT NUMBER: SD-130010-037  
DOC TYPE: PSD  
DOC PART: 001  
REVISION: D1

DRAFT WHERE APPLICABLE MUST REMAIN WITHIN DIMENSIONS