

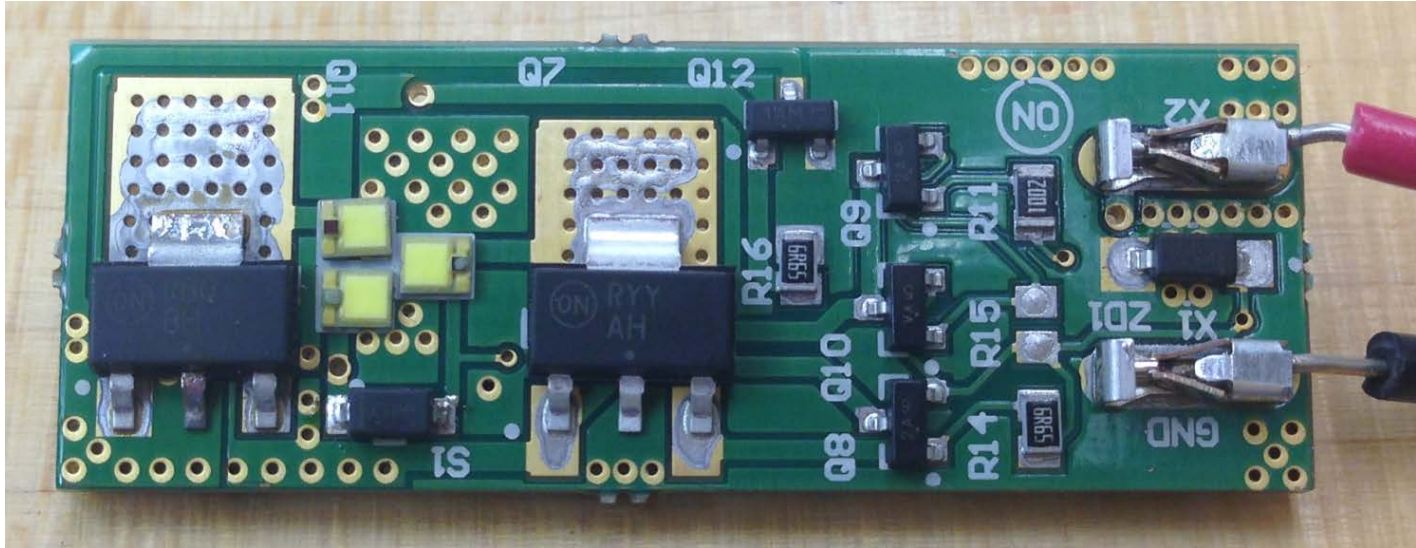


## Test Procedure for the LOWVOLTAGEP2S Evaluation Board

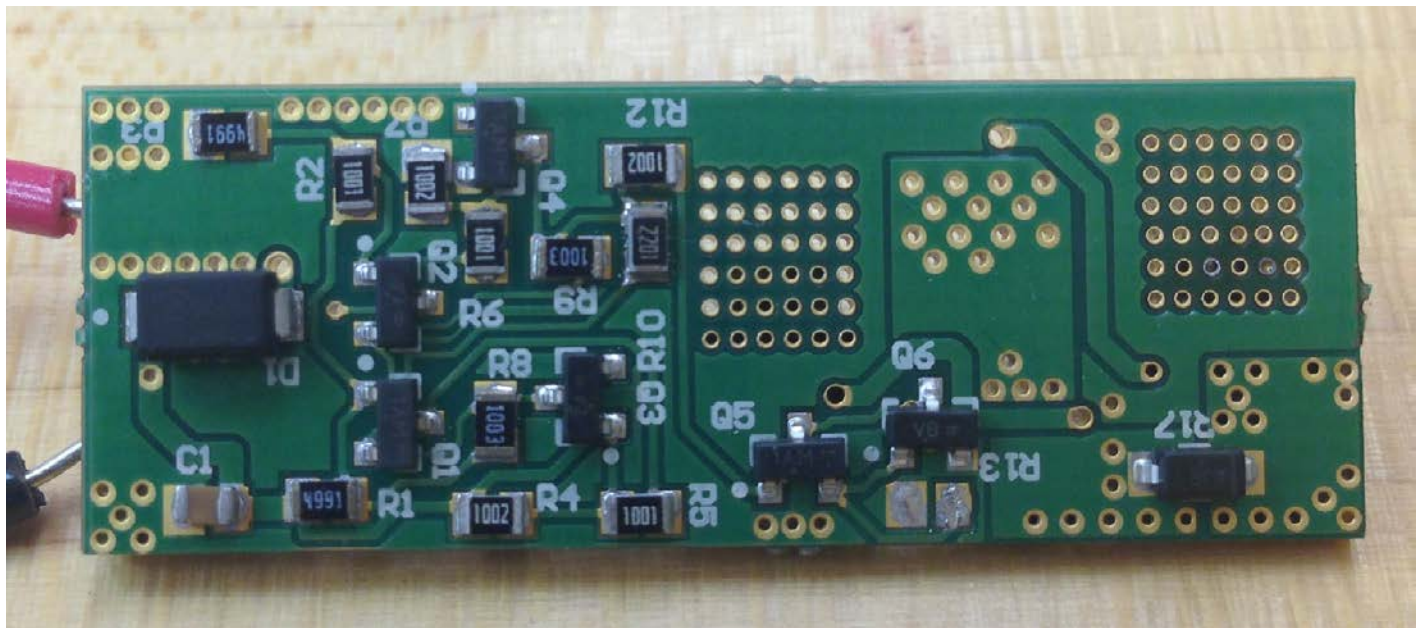
The following steps detail the basic test procedure for these boards:

Necessary Equipment:

1 DC Voltage Source



**Figure 1: Test Setup (Top of Evaluation Board)**



**Figure 2: Test Setup (Bottom of Evaluation Board)**



### Test Procedure:

1. Check if all of the components have the right values and are mounted in the correct positions.
2. Connect the test setup so the red wire is + DC voltage and the black wire is GND.
3. Apply an input voltage from 0 to 24 Volts.
4. Check that the I-V characteristic shown in Figure 3 is present.
5. Power down the input.
6. End of test

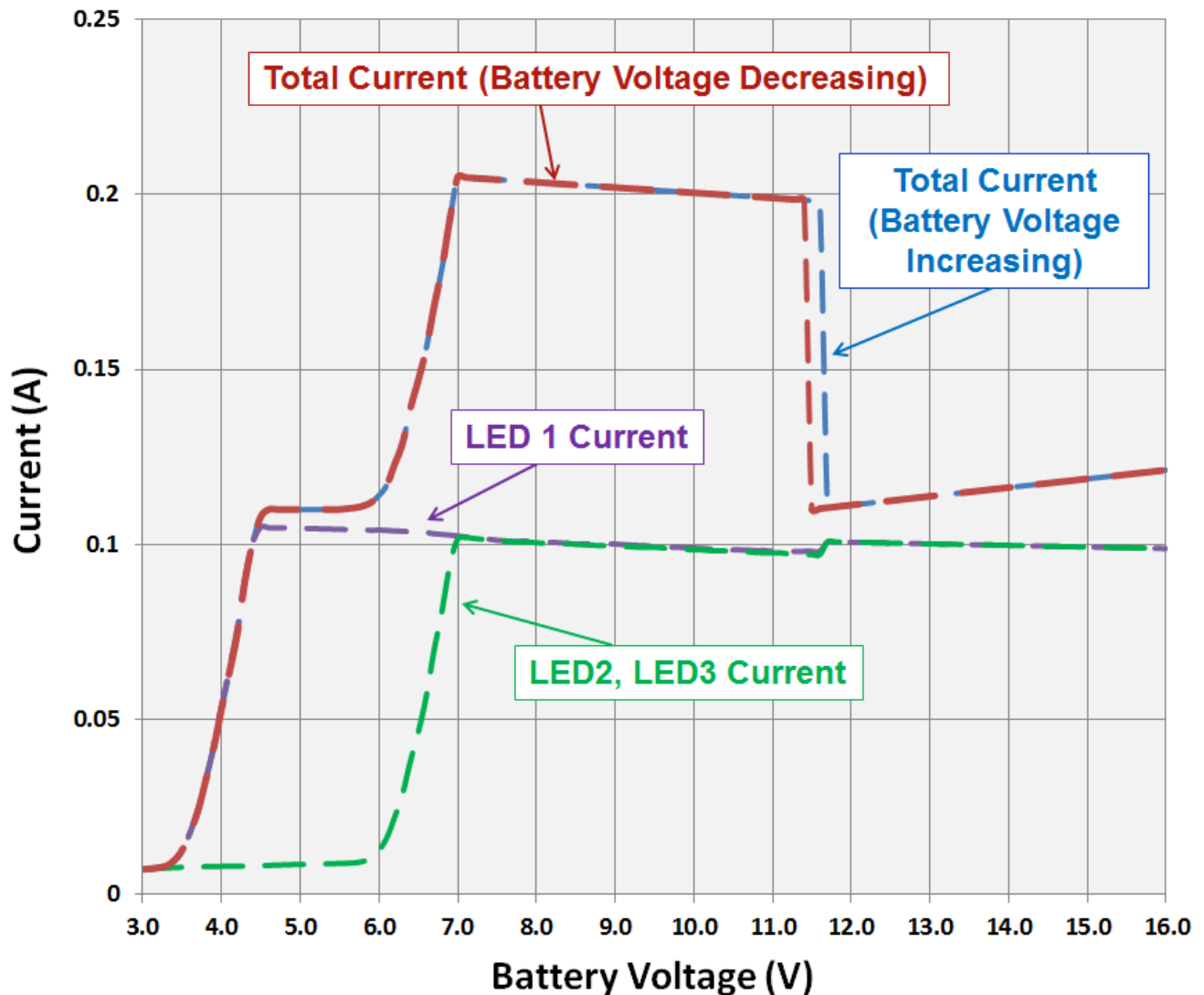


Figure 3: I-V Characteristic