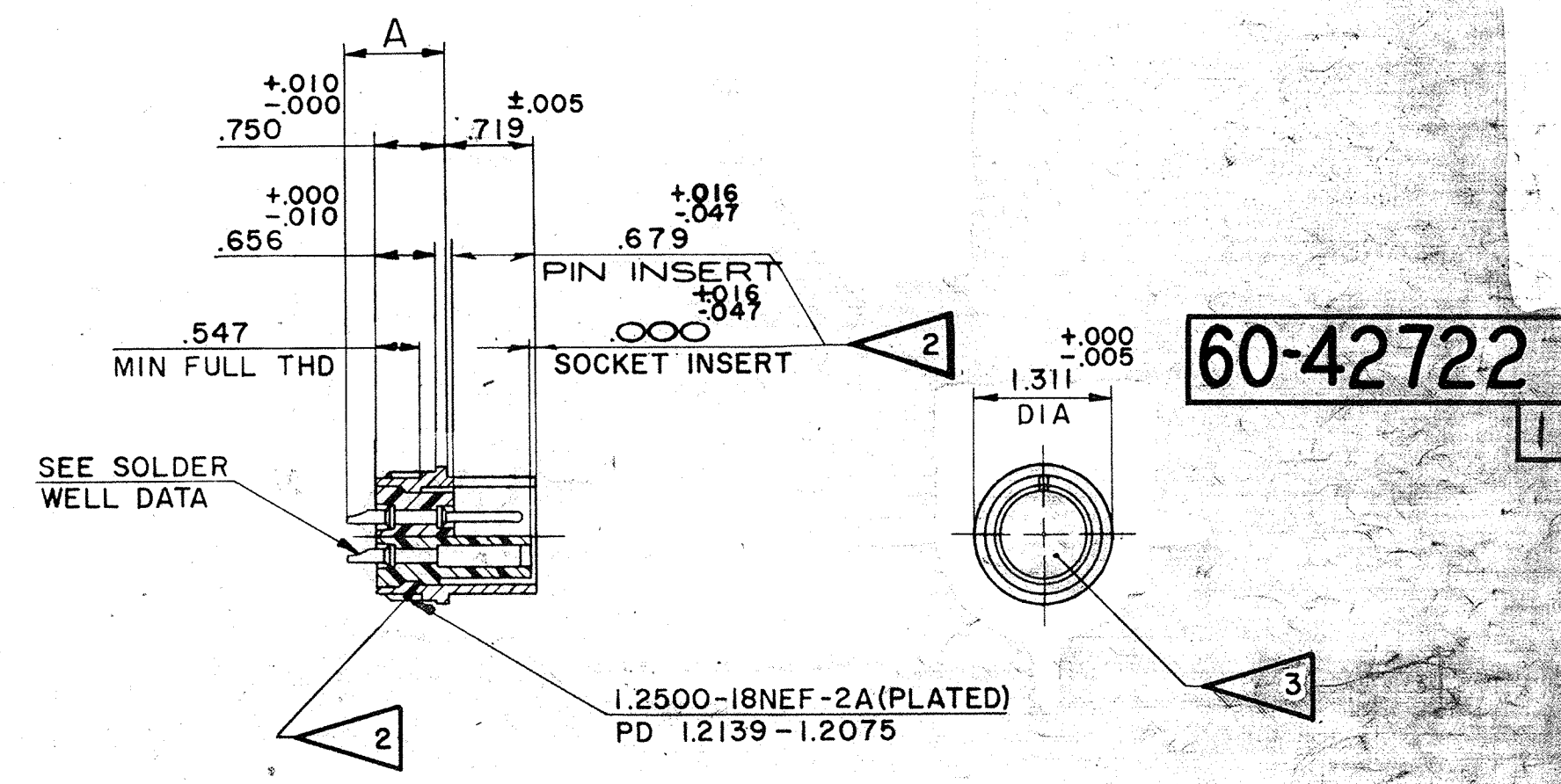


ASSY NO.	ORDNANCE NO.	SHELL	INSERT	CONTACT			RELEASE	WT-LB
				QTY	SIZE	PART NO.		
60-42722-2P	8724237	60-37256-22	10-74822-2P	3	8	10-35531	35508-509	
-2S	8724238		-2S	3	8	10-35532		
-4P	8724239		-4P	2	8	10-35531		
				2	12	10-33646		
-4S	8724240		-4S	2	8	10-35532		
				2	12	10-33644		
-7P	8724241		-7P	1	0	10-35527		
-7S	8724242		-7S	1	0	10-35528		
-15P	8724245		-15P	5	12	10-33646		
				1	16M	10-40599		
-15S	8724246		-15S	5	12	10-33644		
				1	16M	10-40598		
-19P	8724247		-19P	14	16M	10-40599		
-19S	8724248		-19S	14	16M	10-40598		
-22P	8724249		-22P	4	8	10-35531		
-22S	8724250		-22S	4	8	10-35532		
-23P	8724243		-23P	8	12	10-33646		
-23S	8724244		-23S	8	12	10-33644		

REL.	WAS	DATE	D'MAN	APPD.
35508-509		1-29-62	Lambert	Johnd
1 39123	ADD. TEST 9-4435			
-2	(PRO SPEC)			



USE OF THIS DOCUMENT IS UNLIMITED. DOCUMENTS REFERENCED HEREON CONTAIN LIMITED RIGHTS DATA.

SOLDER WELL DATA						
CONTACT SIZE	0	4	8	12	16	16M
WELL DIA.	.469 \pm .005		.209 \pm .004	.116 \pm .004		.078 \pm .004
WELL DEPTH	.625 \pm .001		.500 \pm .002	.250 \pm .002		.188 \pm .002
DIMENSION A \pm .045	1.125		.813	.813		.813

- FOR CONTACT SIZE, SPACING & SERVICE RATING, SEE DRAWING AND IO431.
- DIMENSIONS MUST BE MAINTAINED WHEN INSERTS ARE PRESSED FIRMLY AGAINST INDICATED SHOULDER. SOCKET INSERT FACE MAY PROJECT FROM SHELL .047 MAX OR RECEDE IN SHELL .016 MAX AS DIMENSIONED.
- UNITS ILLUSTRATED MEET THE MATERIAL & FINISH REQUIREMENTS OF AN3106A PER MIL-C-5015.

4. FOR MATING RECEPTACLE ASSEMBLIES, SEE DRAWINGS 60-42022, 60-42122, & 60-42222.

MATERIAL SPEC.	PROCESS SPEC. ASSY 9-3103-1 TEST 9-4435	SCINTILLA MAGNETO DIVISION BENDIX AVIATION CORPORATION SIONEY, N.Y., U.S.A.				TOLERANCES UNLESS OTHERWISE SPECIFIED DECIMALS \pm .010	
HEAT TREAT. SPEC.	FINISH SPEC.	NAME CONNECTOR, ELECTRICAL PLUG, TYPE C22MC				NEXT ASSEMBLY SEE WT COL	
TOOL ACC.	CDM REC.	D'MAN LAMBERT	CHECKER Horton	MAT. 6-30-59	ST DB White	CR-D MAN 7-2-59	APPROVED 7-2-59
		SCALE NONE				SUPERSEDED BY REF 60-42622	
						60-42722	