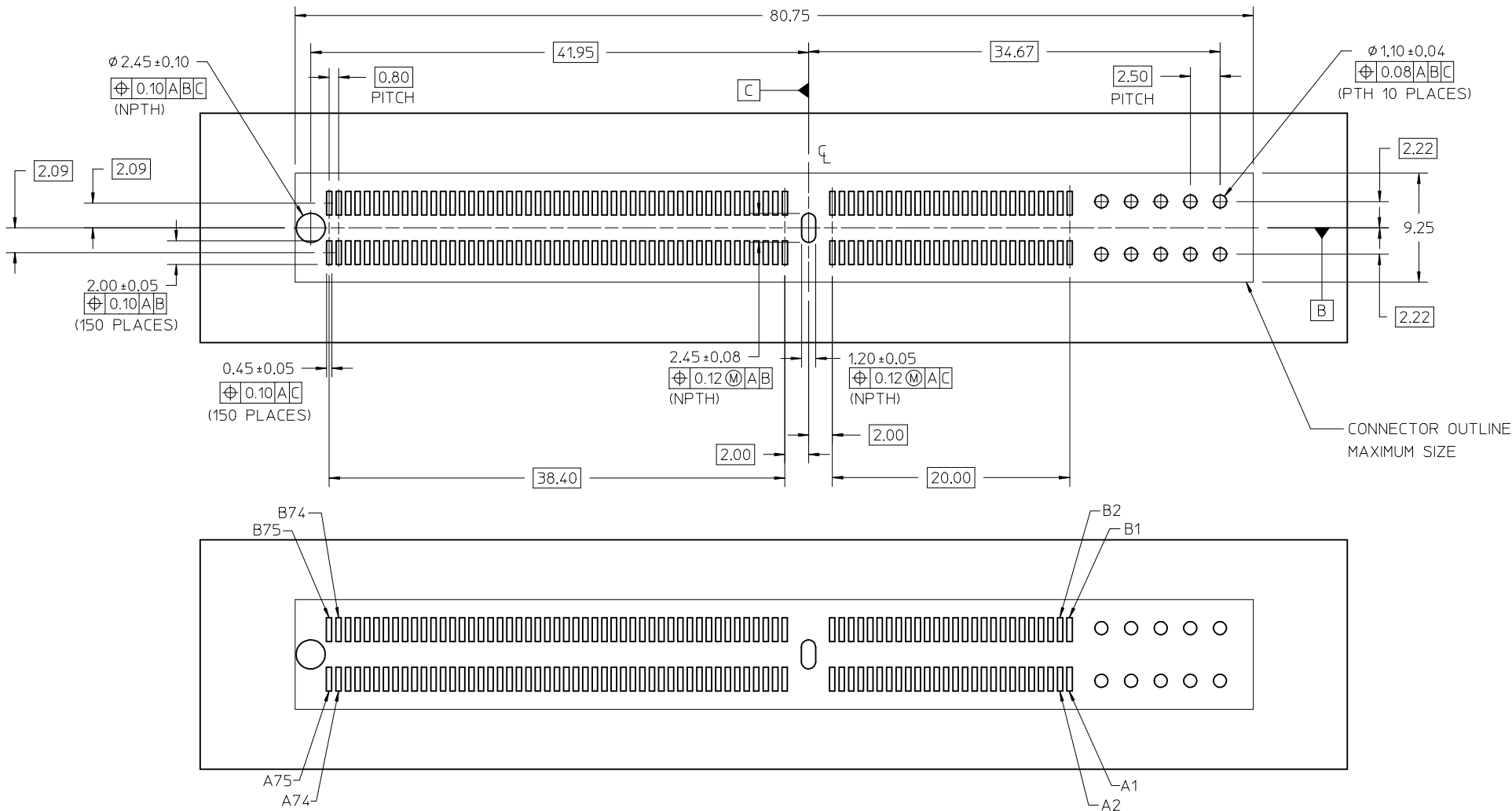


PICK AND PLACE CAP POSITION

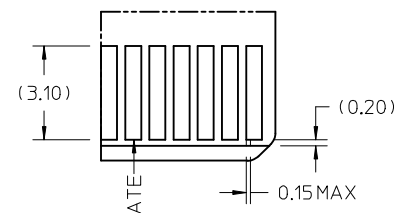
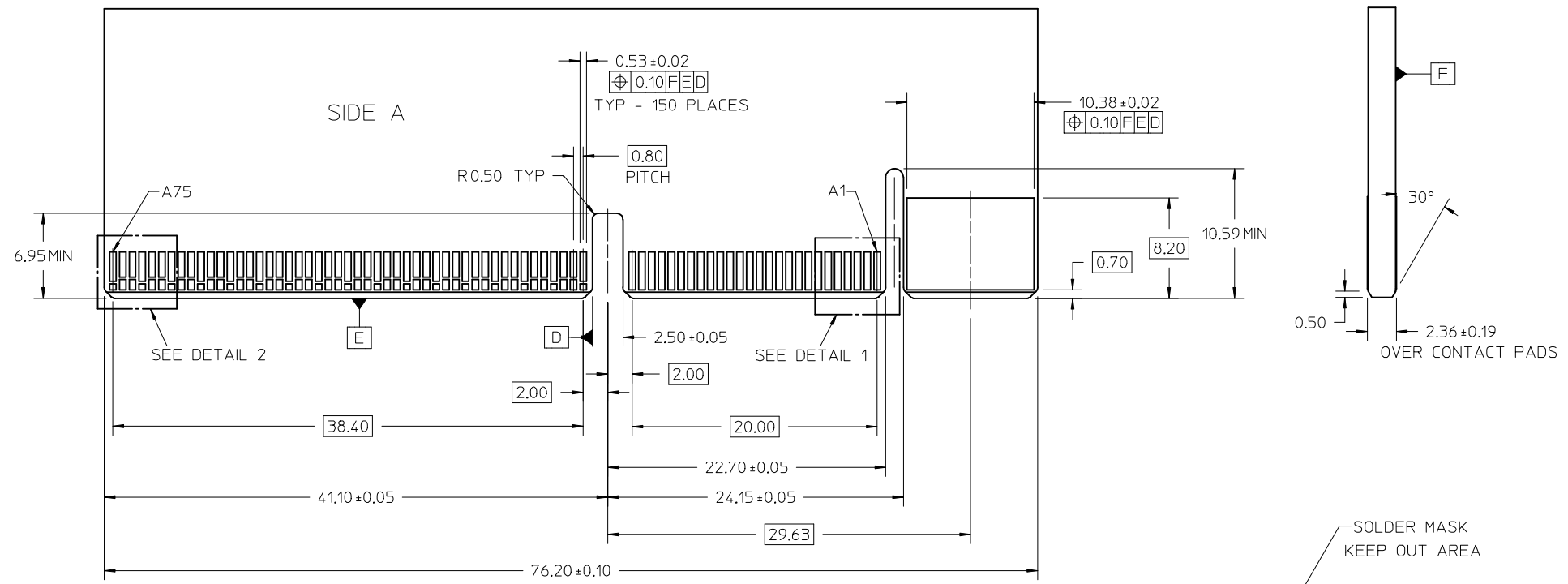
- NOTES:
- MATERIAL:
HOUSING - GLASS FILLED LIQUID CRYSTAL POLYMER, 94-V0, BLACK
TERMINALS - COPPER ALLOY
 - FINISH:
CONTACT AREA: SELECT GOLD 0.76µm MIN
SOLDER TAIL: 2.54µm MIN TIN (MATTE)
UNDERPLATE: 1.27µm NICKEL ALL OVER
 - PRODUCT SPECIFICATION: PS-151046-0001.
 - PACKAGING SPECIFICATION: PK-151046-0001(TENTATIVE).
 - APPLICATION SPECIFICATION: AS-151046-0001(TENTATIVE).
 - MATING PC BOARD THICKNESS = 2.36±0.19MM OVER CONTACT PADS.
 - PRODUCT IS ELV AND ROHS COMPLIANT. LEVEL OF COMPLIANCE:6/6
ALL BANNED SUBSTANCES ARE REMOVED:
Pb (LEAD)
HEXAVALENT CHROMIUM (CrVI)
CADMIUM
MERCURY
POLYBROMINATED BIPHENYL (PBB)
POLYBROMINATED DIPHENYL ETHER (PBDE)
 - THIS PART CONFORMS TO CLASS B REQUIREMENTS OF COSMETIC SPEC PS-45499-002.

UPDATE PICK AND PLACE EC NO: S2018-0046 DRAWN: MHLONG 2017/07/26 CHKD: CGTAN 2017/08/18 APPR: SHLENI 2017/08/21	DESCRIPTION REV: 4	QUALITY SYMBOLS	GENERAL TOLERANCES (UNLESS SPECIFIED)	DIMENSION STYLE	SCALE	DESIGN UNITS	THIRD ANGLE PROJECTION	
		▽=0	mm INCH	MM ONLY	4:1	METRIC		
		▽=0	4 PLACES ± --- ± ---	DRAWN BY DATE	TITLE			
		▽=0	3 PLACES ± --- ± ---	MHLONG 2014/09/25	SALES DRAWING			
		2 PLACES ± 0.15 ± ---	CHECKED BY DATE	EDGELINE25 40A/150CKTS				
		1 PLACE ± 0.25 ± ---	CGTAN 2015/03/09	.093"PCB 0.8MM PITCH				
		0 PLACE ± --- ± ---	APPROVED BY DATE	molex				
			SHLENI 2015/03/18	DOCUMENT NO.				
		ANGULAR ±1/2°	MATERIAL NO.	SD-151046-2150				
		DRAFT WHERE APPLICABLE MUST REMAIN WITHIN DIMENSIONS	1510462150	SHEET NO. 1 OF 3				
			SIZE C	THIS DRAWING CONTAINS INFORMATION THAT IS PROPRIETARY TO MOLEX INCORPORATED AND SHOULD NOT BE USED WITHOUT WRITTEN PERMISSION				

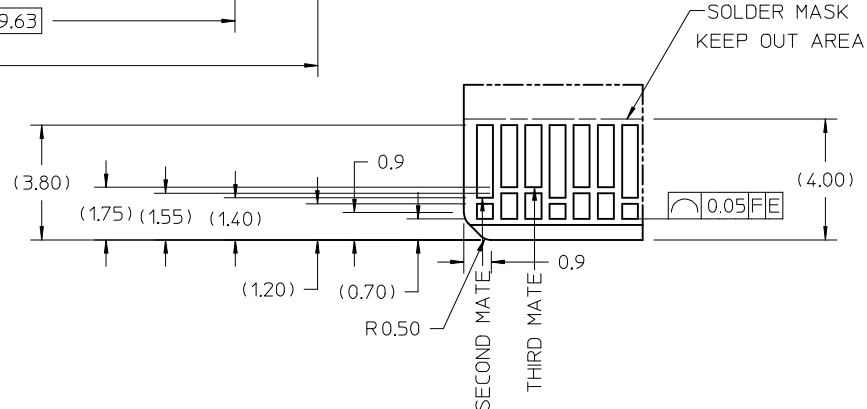


FOOT PRINT NOTES:
 1. DATUM -A- IS THE TOP OF THE PCB

SEE SHEET 1 EC NO: S2018-0046 DRAWN: MHL IONG 2017/07/26 CHKD: CGTAN 2017/08/18 APPR: SHLENI 2017/08/21 REV 4	QUALITY SYMBOLS	GENERAL TOLERANCES (UNLESS SPECIFIED)	DIMENSION STYLE	SCALE	DESIGN UNITS	THIRD ANGLE PROJECTION	
	▽=0	mm INCH	MM ONLY	4:1	METRIC		
	▽=0	4 PLACES ± --- ± ---	DRAWN BY DATE	TITLE			
	▽=0	3 PLACES ± --- ± ---	MHL IONG 2014/09/25	SALES DRAWING			
		2 PLACES ± 0.15 ± ---	CHECKED BY DATE	EDGELINE25 40A/150CKTS			
		1 PLACE ± 0.25 ± ---	CGTAN 2015/03/09	.093"PCB 0.8MM PITCH			
		0 PLACE ± --- ± ---	APPROVED BY DATE	molex			
		ANGULAR ±1/2°	SHLENI 2015/03/18	DOCUMENT NO.			
		DRAFT WHERE APPLICABLE MUST REMAIN WITHIN DIMENSIONS	MATERIAL NO.	SD-151046-2150		SHEET NO.	
			SEE SHEET 1			2 OF 3	
			THIS DRAWING CONTAINS INFORMATION THAT IS PROPRIETARY TO MOLEX INCORPORATED AND SHOULD NOT BE USED WITHOUT WRITTEN PERMISSION				



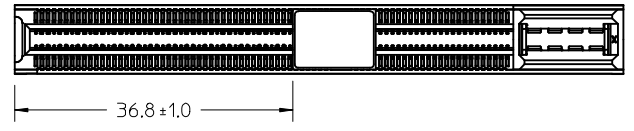
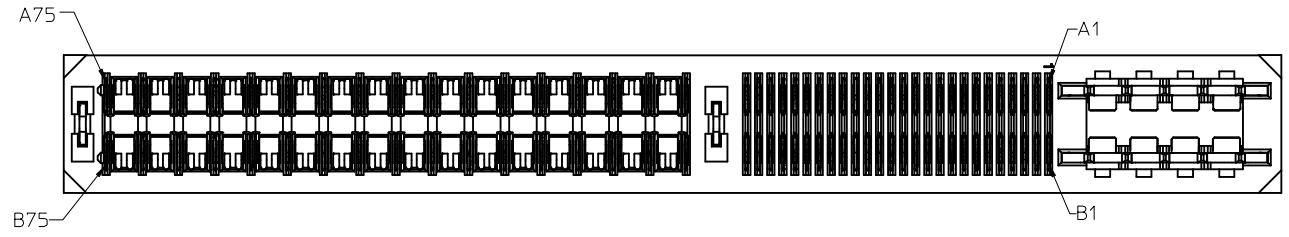
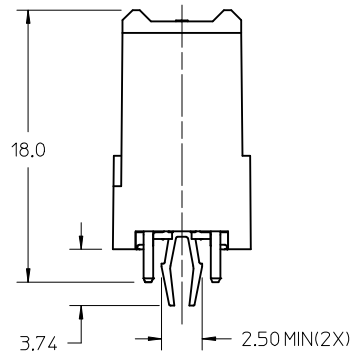
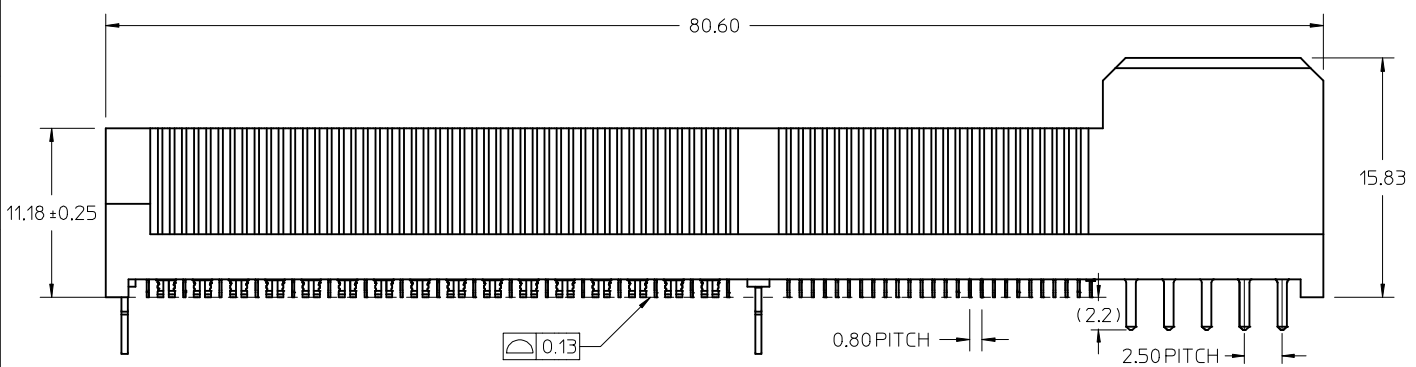
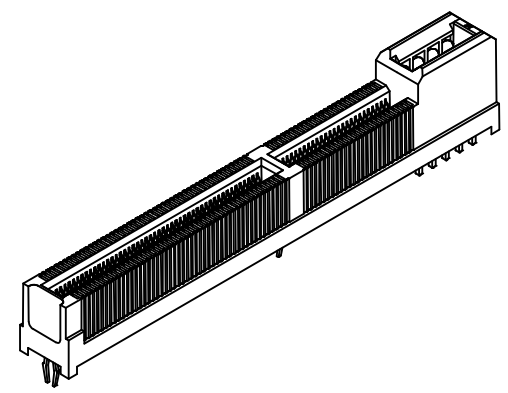
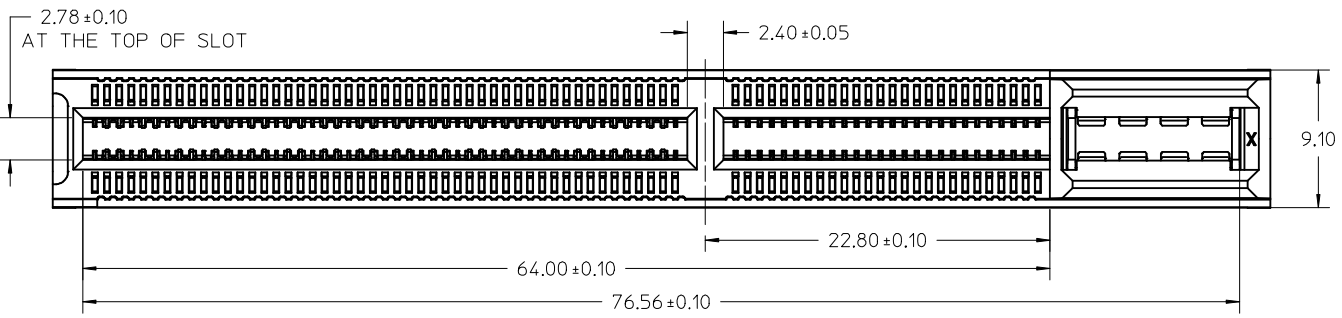
DETAIL 1
RECOMMENDED TIE BAR SIZE



DETAIL 2
SCALE 8:1

NOTE:
 1.THESE ARE GENERIC DETAILS THAT DESCRIBE THE CONFIGURATION OF VARIOUS PCB DESIGN ELEMENTS. THE CUSTOMER MUST DETERMINE WHERE AND WHEN TO USE EACH ELEMENT TO ACCOMMODATE THEIR SPECIFIC APPLICATION.
 2.CHAMFER ROUGHNESS NOT TO EXCEED 3.17µM.
 3.EDGE CARD CHAMFER NOT TO GO THROUGH GOLD PAD.

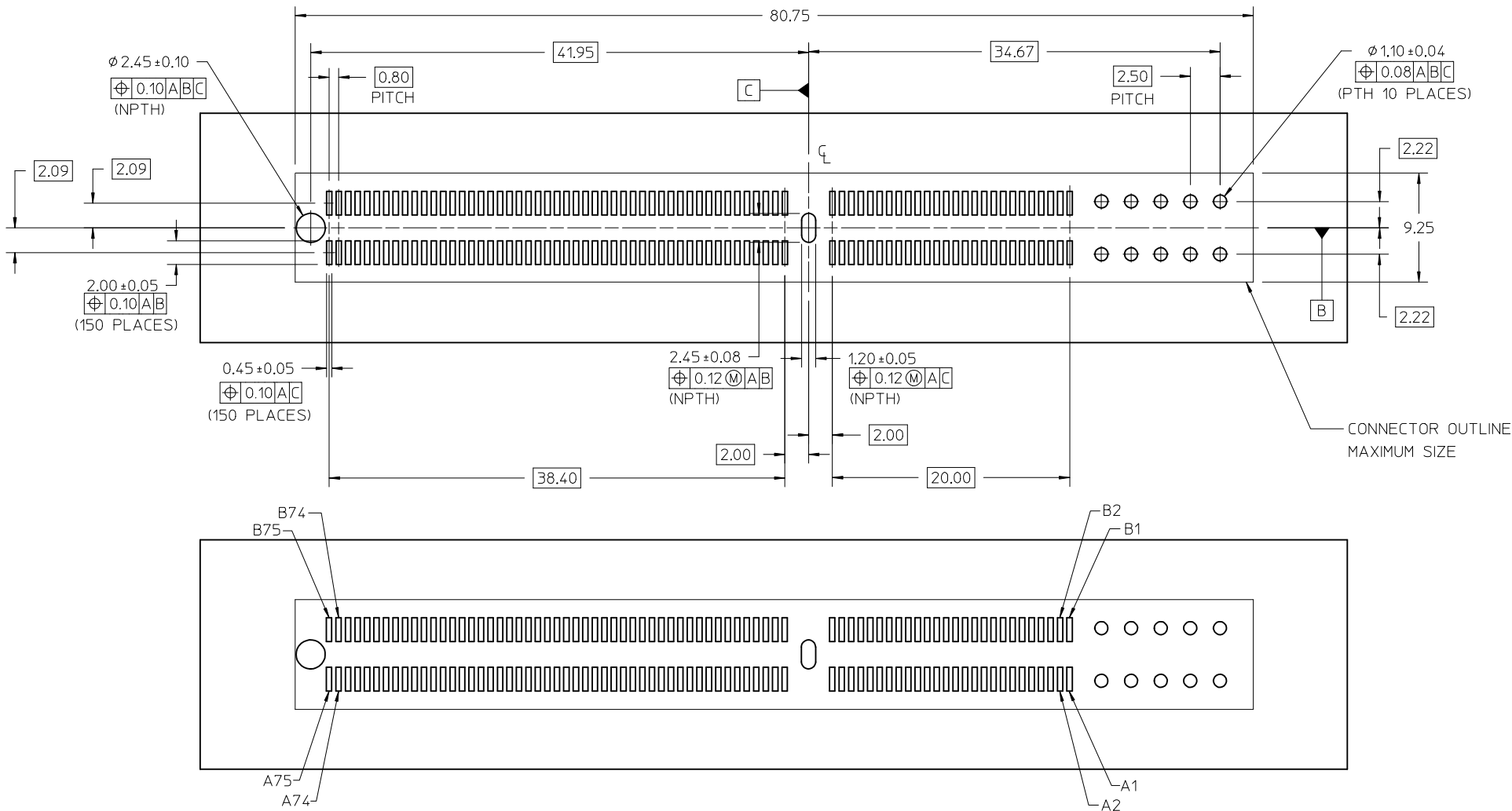
SEE SHEET 1 EC NO: S2018-0046 DRAWN: MHLONG 2017/07/26 CHKD: CGTAN 2017/08/18 APPR: SHLENI 2017/08/21	DESCRIPTION REV: 4	QUALITY SYMBOLS	GENERAL TOLERANCES (UNLESS SPECIFIED)	DIMENSION STYLE	SCALE	DESIGN UNITS	THIRD ANGLE PROJECTION	
		▽=0	mm INCH	MM ONLY	4:1	METRIC	☉	
		▽=0	4 PLACES ± --- ± ---	DRAWN BY DATE	TITLE	SALES DRAWING EDGELINE25 40A/150CKTS .093"PCB 0.8MM PITCH		
		▽=0	3 PLACES ± --- ± ---	CHECKED BY DATE	SALES DRAWING	molex DOCUMENT NO. SD-151046-2150 SHEET NO. 3 OF 3		
		ANGULAR ±1/2°	DRAFT WHERE APPLICABLE MUST REMAIN WITHIN DIMENSIONS	APPROVED BY DATE	THIS DRAWING CONTAINS INFORMATION THAT IS PROPRIETARY TO MOLEX INCORPORATED AND SHOULD NOT BE USED WITHOUT WRITTEN PERMISSION			
				SHLENI 2015/03/18				



PICK AND PLACE CAP POSITION

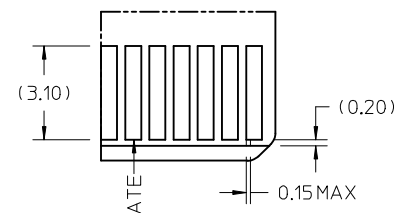
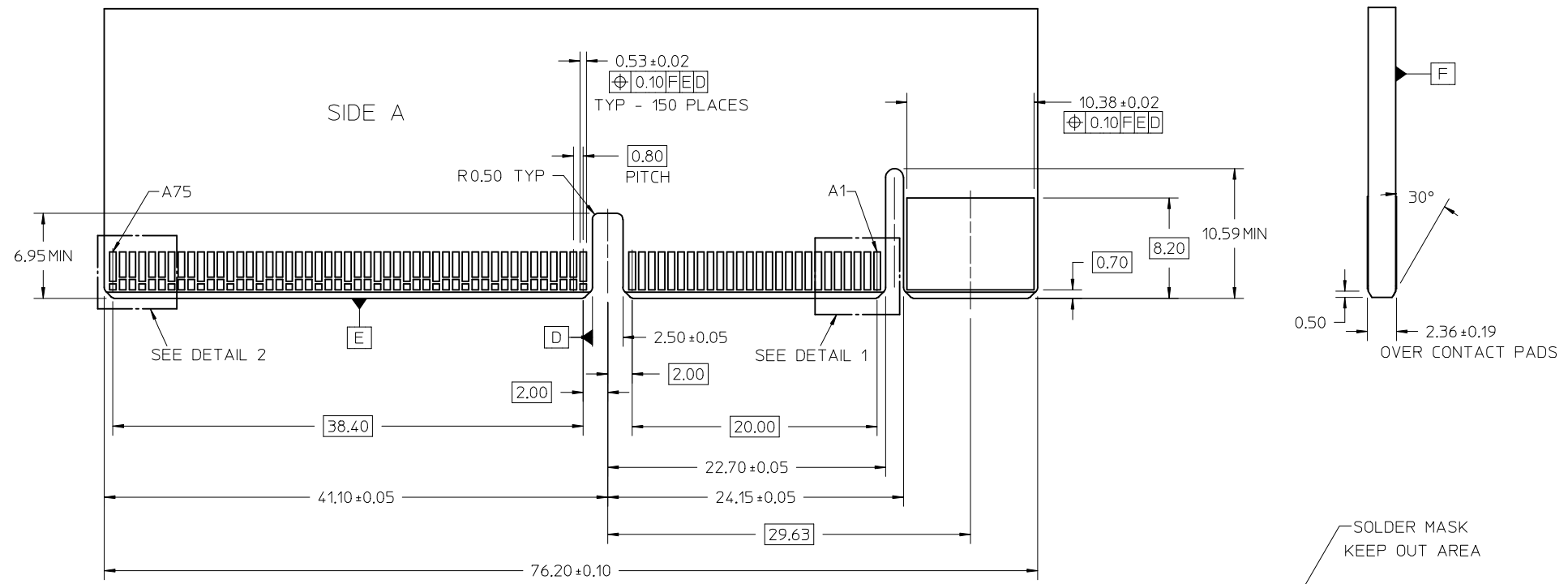
- NOTES:
- MATERIAL:
HOUSING - GLASS FILLED LIQUID CRYSTAL POLYMER, 94-V0, BLACK
TERMINALS - COPPER ALLOY
 - FINISH:
CONTACT AREA: SELECT GOLD 0.76µm MIN
SOLDER TAIL: 2.54µm MIN TIN (MATTE)
UNDERPLATE: 1.27µm NICKEL ALL OVER
 - PRODUCT SPECIFICATION: PS-151046-0001.
 - PACKAGING SPECIFICATION: PK-151046-0001(TENTATIVE).
 - APPLICATION SPECIFICATION: AS-151046-0001(TENTATIVE).
 - MATING PC BOARD THICKNESS = 2.36±0.19MM OVER CONTACT PADS.
 - PRODUCT IS ELV AND ROHS COMPLIANT. LEVEL OF COMPLIANCE:6/6
ALL BANNED SUBSTANCES ARE REMOVED:
Pb (LEAD)
HEXAVALENT CHROMIUM (CrVI)
CADMIUM
MERCURY
POLYBROMINATED BIPHENYL (PBB)
POLYBROMINATED DIPHENYL ETHER (PBDE)
 - THIS PART CONFORMS TO CLASS B REQUIREMENTS OF COSMETIC SPEC PS-45499-002.

UPDATE PICK AND PLACE EC NO: S2018-0046 DRAWN: MHLONG 2017/07/26 CHKD: CGTAN 2017/08/18 APPR: SHLENI 2017/08/21	DESCRIPTION REV: 4	QUALITY SYMBOLS	GENERAL TOLERANCES (UNLESS SPECIFIED)	DIMENSION STYLE	SCALE	DESIGN UNITS	THIRD ANGLE PROJECTION	
		▽=0	mm INCH	MM ONLY	4:1	METRIC	☉	
		▽=0	4 PLACES ± --- ± ---	DRAWN BY DATE	TITLE			
		▽=0	3 PLACES ± --- ± ---	MHLONG 2014/09/25	SALES DRAWING			
		2 PLACES ± 0.15 ± ---	CHECKED BY DATE	EDGELINE25 40A/150CKTS				
		1 PLACE ± 0.25 ± ---	CGTAN 2015/03/09	.093"PCB 0.8MM PITCH				
		0 PLACE ± --- ± ---	APPROVED BY DATE	molex				
		ANGULAR ±1/2°	SHLENI 2015/03/18	MATERIAL NO.		DOCUMENT NO.	SHEET NO.	
		DRAFT WHERE APPLICABLE MUST REMAIN WITHIN DIMENSIONS		1510462150		SD-151046-2150	1 OF 3	
				THIS DRAWING CONTAINS INFORMATION THAT IS PROPRIETARY TO MOLEX INCORPORATED AND SHOULD NOT BE USED WITHOUT WRITTEN PERMISSION				

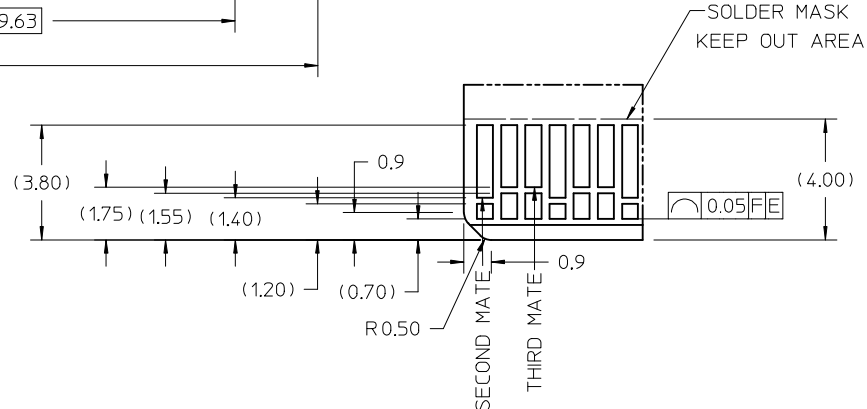


FOOT PRINT NOTES:
 1. DATUM -A- IS THE TOP OF THE PCB

SEE SHEET 1 EC NO: S2018-0046 DRAWN: MHL LONG 2017/07/26 CHKD: CGTAN 2017/08/18 APPR: SHLENI 2017/08/21 REV 4	QUALITY SYMBOLS	GENERAL TOLERANCES (UNLESS SPECIFIED)	DIMENSION STYLE	SCALE	DESIGN UNITS	THIRD ANGLE PROJECTION
	▽=0	mm INCH	MM ONLY	4:1	METRIC	
	▽=0	4 PLACES ± --- ± ---	DRAWN BY DATE	TITLE		
	▽=0	3 PLACES ± --- ± ---	MHL LONG 2014/09/25	SALES DRAWING		
		2 PLACES ± 0.15 ± ---	CHECKED BY DATE	EDGELINE25 40A/150CKTS		
		1 PLACE ± 0.25 ± ---	CGTAN 2015/03/09	.093"PCB 0.8MM PITCH		
		0 PLACE ± --- ± ---	APPROVED BY DATE	molex		
		ANGULAR ±1/2°	SHLENI 2015/03/18	DOCUMENT NO.		
		DRAFT WHERE APPLICABLE MUST REMAIN WITHIN DIMENSIONS	MATERIAL NO.	SD-151046-2150		SHEET NO.
			SEE SHEET 1			2 OF 3
			SIZE C	THIS DRAWING CONTAINS INFORMATION THAT IS PROPRIETARY TO MOLEX INCORPORATED AND SHOULD NOT BE USED WITHOUT WRITTEN PERMISSION		



DETAIL 1
RECOMMENDED TIE BAR SIZE



DETAIL 2
SCALE 8:1

NOTE:
 1.THESE ARE GENERIC DETAILS THAT DESCRIBE THE CONFIGURATION OF VARIOUS PCB DESIGN ELEMENTS. THE CUSTOMER MUST DETERMINE WHERE AND WHEN TO USE EACH ELEMENT TO ACCOMMODATE THEIR SPECIFIC APPLICATION.
 2.CHAMFER ROUGHNESS NOT TO EXCEED 3.17µM.
 3.EDGE CARD CHAMFER NOT TO GO THROUGH GOLD PAD.

SEE SHEET 1 EC NO: S2018-0046 DRAWN: MHLONG 2017/07/26 CHKD: CGTAN 2017/08/18 APPR: SHLENI 2017/08/21	QUALITY SYMBOLS	GENERAL TOLERANCES (UNLESS SPECIFIED)	DIMENSION STYLE MM ONLY	SCALE 4:1	DESIGN UNITS METRIC	THIRD ANGLE PROJECTION
	▽=0	mm INCH	DRAWN BY DATE MHLONG 2014/09/25	TITLE SALES DRAWING EDGELINE25 40A/150CKTS .093"PCB 0.8MM PITCH		
	▽=0	4 PLACES ± --- ± ---	CHECKED BY DATE CGTAN 2015/03/09	molex DOCUMENT NO. SD-151046-2150 SHEET NO. 3 OF 3		
	▽=0	3 PLACES ± --- ± ---	APPROVED BY DATE SHLENI 2015/03/18			
4	ANGULAR ±1/2°	DRAFT WHERE APPLICABLE MUST REMAIN WITHIN DIMENSIONS	MATERIAL NO. SEE SHEET 1			
			SIZE C	THIS DRAWING CONTAINS INFORMATION THAT IS PROPRIETARY TO MOLEX INCORPORATED AND SHOULD NOT BE USED WITHOUT WRITTEN PERMISSION		