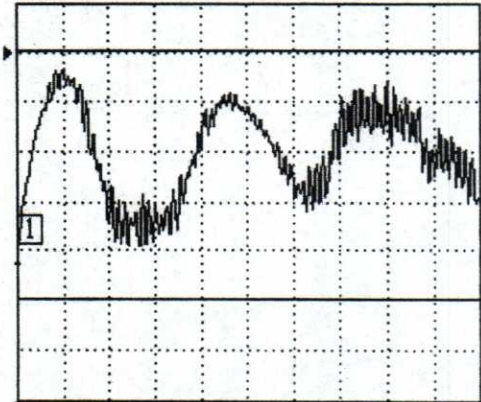
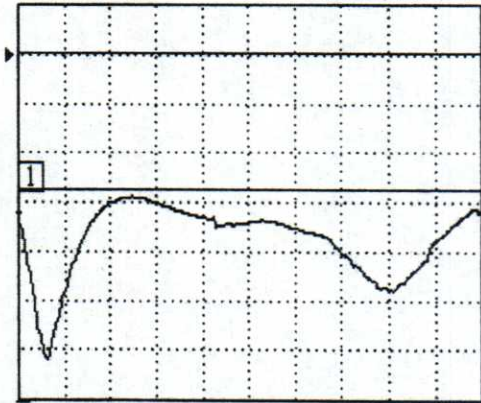


S21 TRANS LOG MAG.  
▶ 0.000 dB 0.200 dB/DIV



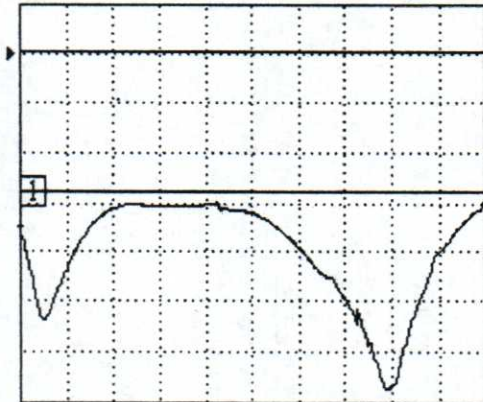
3.000000000 GHz 9.000000000

S11 REFL LOG MAG.  
▶ 0.000 dB 5.000 dB/DIV



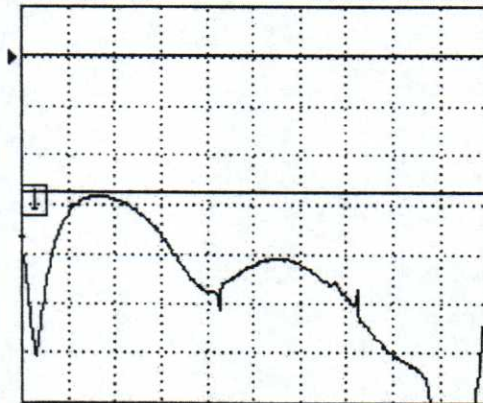
3.000000000 GHz 9.000000000

S22 REFL LOG MAG.  
▶ 0.000 dB 5.000 dB/DIV



3.000000000 GHz 9.000000000

S12 TRANS LOG MAG.  
▶ 0.000 dB 5.000 dB/DIV



3.000000000 GHz 9.000000000

CH 1 - S21  
0.0000 mm REF  
0.000 dB OFFSET  
0.00° OFFSET

MARKER 1  
3.000000000 GHz  
-0.864 dB

MARKER TO MAX  
▶ MARKER TO MIN

MARKER READOUT  
FUNCTIONS

D3C3090 - Circulator

3.0 - 9.0 GHz

Isolation: 14 dB Min

Insertion Loss: 1.0 dB Max

VSWR: 1.50:1 Max

SMA-F connectors on all 3 ports