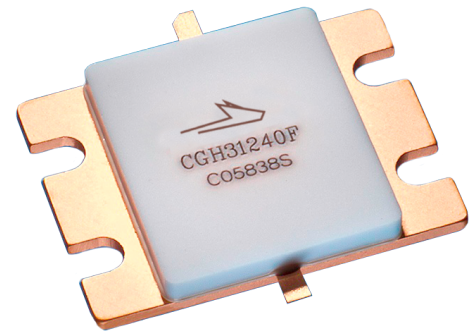


# CGH31240F

240 W, 2.7-3.1 GHz, 50-ohm Input/Output Matched, GaN HEMT for S-Band Radar Systems



Package Types: 440201  
PN: CGH31240F

## Description

WolfSpeed's CGH31240F is a gallium nitride (GaN) high electron mobility transistor (HEMT) designed specifically with high efficiency, high gain and wide bandwidth capabilities, which makes the CGH31240F ideal for 2.7-3.1 GHz S-Band radar amplifier applications. The transistor is supplied in a ceramic/metal flange package.

## Typical Performance Over 2.7-3.1 GHz ( $T_c = 25^\circ\text{C}$ ) of Demonstration Amplifier

Parameter	2.7 GHz	2.8 GHz	2.9 GHz	3.0 GHz	3.1 GHz	Units
Output Power	243	249	249	245	243	W
Gain	11.9	11.9	11.9	11.9	11.9	dB
Power Added Efficiency	60	61	60	59	52	%

Note:

Measured in the CGH31240F-AMP amplifier circuit, under 300 $\mu\text{s}$  pulse width, 20% duty cycle,  $P_{IN} = 42 \text{ dBm}$

## Features

- 2.7 - 3.1 GHz Operation
- 12 dB Power Gain
- 60% Power Added Efficiency
- < 0.2 dB Pulsed Amplitude Droop







## Absolute Maximum Ratings (not simultaneous) at 25°C Case Temperature

Parameter	Symbol	Rating	Units	Conditions
Pulse Width	PW	1	ms	
Duty Cycle	DC	50	%	
Drain-Source Voltage	$V_{DS}$	120	V	25°C
Gate-to-Source Voltage	$V_{GS}$	-10, +2		
Power Dissipation	$P_{DISS}$	345	W	
Storage Temperature	$T_{STG}$	-65, +150	°C	
Operating Junction Temperature	$T_J$	225		
Maximum Forward Gate Current	$I_{GMAX}$	60	mA	25°C
Maximum Drain Current <sup>1</sup>	$I_{DMAX}$	24	A	
Soldering Temperature <sup>2</sup>	$T_S$	245	°C	
Screw Torque	$\tau$	40	in-oz	
Thermal Resistance, Junction to Case <sup>3</sup>	$R_{\theta JC}$	0.5	°C/W	85°C
Case Operating Temperature <sup>3</sup>	$T_C$	-40, +150	°C	30 seconds

Notes:

<sup>1</sup> Current limit for long term, reliable operation

<sup>2</sup> Refer to the Application Note on soldering at [wolfspeed.com/rf/document-library](https://wolfspeed.com/rf/document-library)

<sup>3</sup> Measured for the CGH31240F at  $P_{DISS} = 280$  W. Pulse Width = 300 $\mu$ s, Duty Cycle = 20%

## Electrical Characteristics ( $T_C = 25^\circ\text{C}$ )

Characteristics	Symbol	Min.	Typ.	Max.	Units	Conditions
<b>DC Characteristics<sup>1</sup></b>						
Gate Threshold Voltage	$V_{GS(th)}$	-3.8	-3.0	-2.3	$V_{DC}$	$V_{DS} = 10$ V, $I_D = 57.6$ mA
Gate Quiescent Voltage	$V_{GS(Q)}$	—	-2.7	—		$V_{DS} = 28$ V, $I_D = 1.0$ mA
Saturated Drain Current <sup>2</sup>	$I_{DS}$	46.4	56.0	—	A	$V_{DS} = 6.0$ V, $V_{GS} = 2.0$ V
Drain-Source Breakdown Voltage	$V_{BR}$	84	—	—	$V_{DC}$	$V_{GS} = -8$ V, $I_D = 57.6$ mA
<b>RF Characteristics<sup>3</sup> (<math>T_C = 25^\circ\text{C}</math>, <math>F_0 = 2.7, 2.9, 3.1</math> GHz unless otherwise noted)</b>						
Output Power	$P_{OUT}$	200	250	—	W	$V_{DD} = 28$ V, $I_{DQ} = 1.0$ A, $P_{IN} = 42$ dBm
Power Added Efficiency at 2.7 GHz	PAE	49	54	—	%	
Power Added Efficiency at 2.9 GHz		52	58	—		
Power Added Efficiency at 3.1 GHz		42	49	—		
Power Gain	$G_p$	11	12	—	dB	$V_{DD} = 28$ V, $I_{DQ} = 1.0$ A, $P_{IN} = -10$ dBm
Small Signal Gain	S21	14	16	—		
Input Return Loss	S11	—	-12	-8.0	dB	$V_{DD} = 28$ V, $I_{DQ} = 1.0$ A, $P_{IN} = -10$ dBm
Output Return Loss	S22	—	-6.0	-4.5		
Pulse Amplitude Droop	D	—	0.15	—		

Notes:

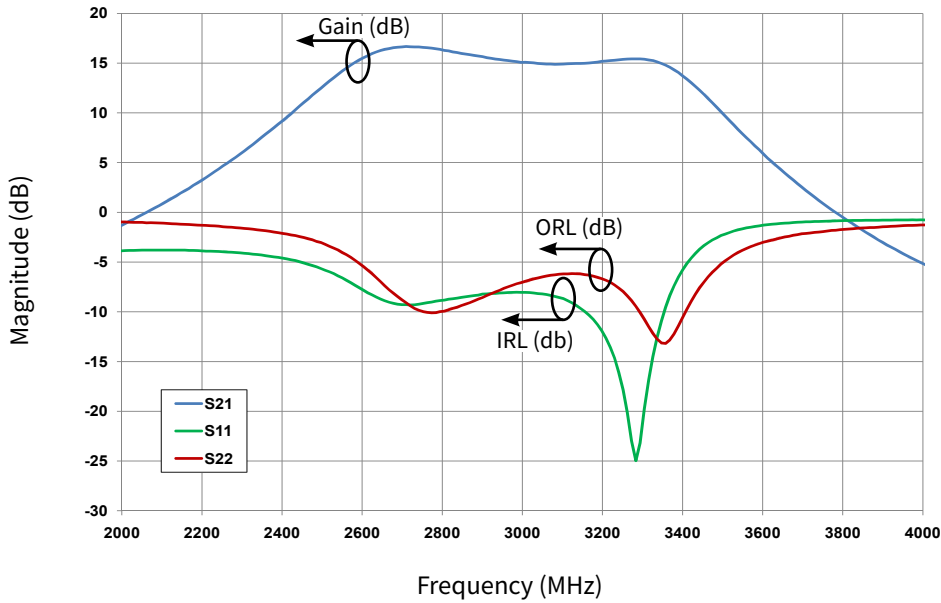
<sup>1</sup> Measured on wafer prior to packaging

<sup>2</sup> Scaled from PCM data

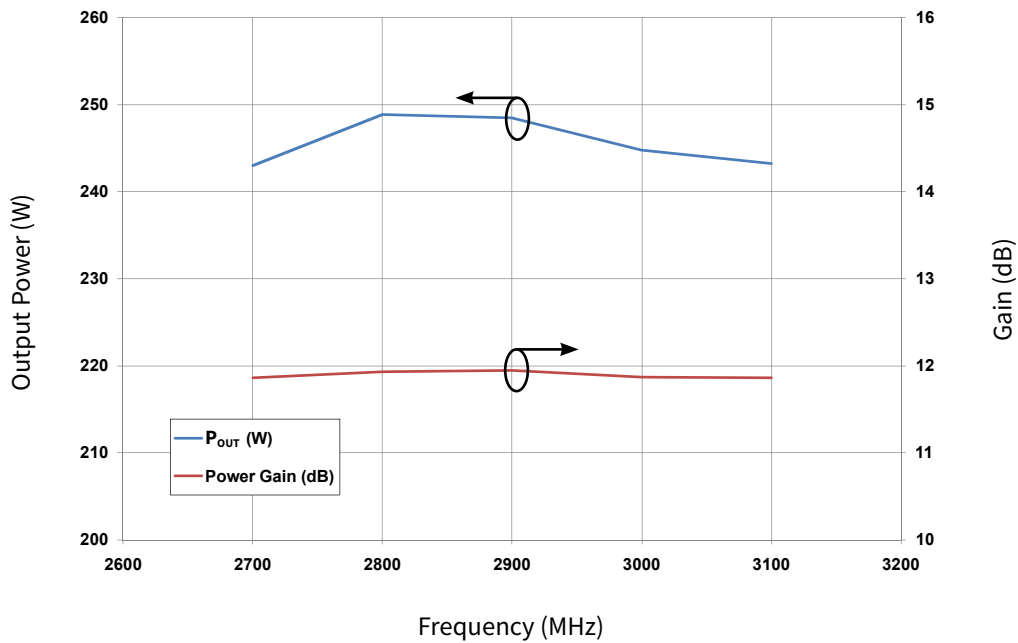
<sup>3</sup> Measured in CGH31240F-AMP. Pulse Width = 300 $\mu$ s, Duty Cycle = 20%.



Typical Performance



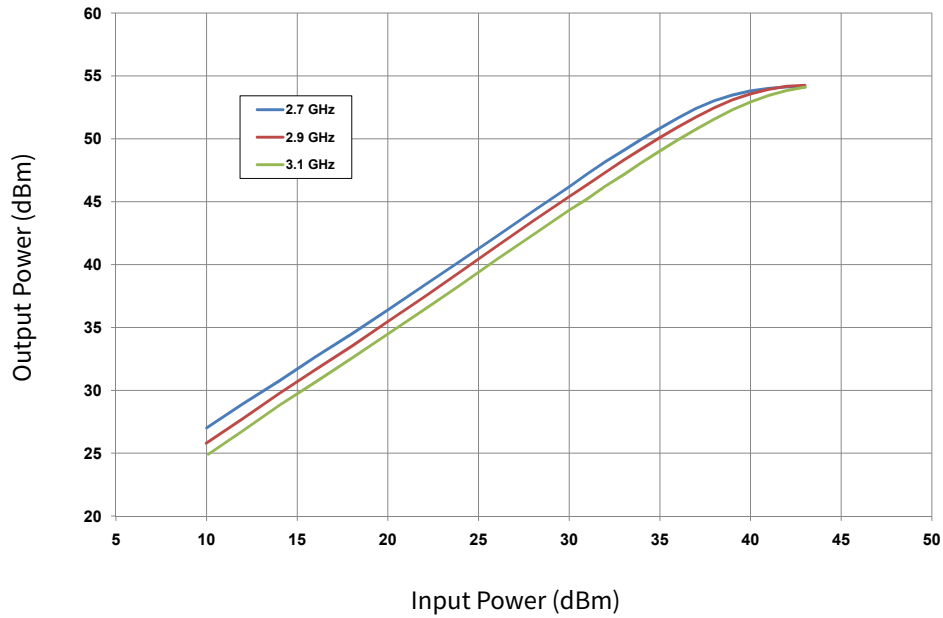
**Figure 1.** Gain and Return Losses vs Frequency of the CGH31240F Measured in CGH31240F-AMP Amplifier Circuit  
 $V_{DS} = 28\text{ V}$ ,  $I_{DS} = 1\text{ A}$



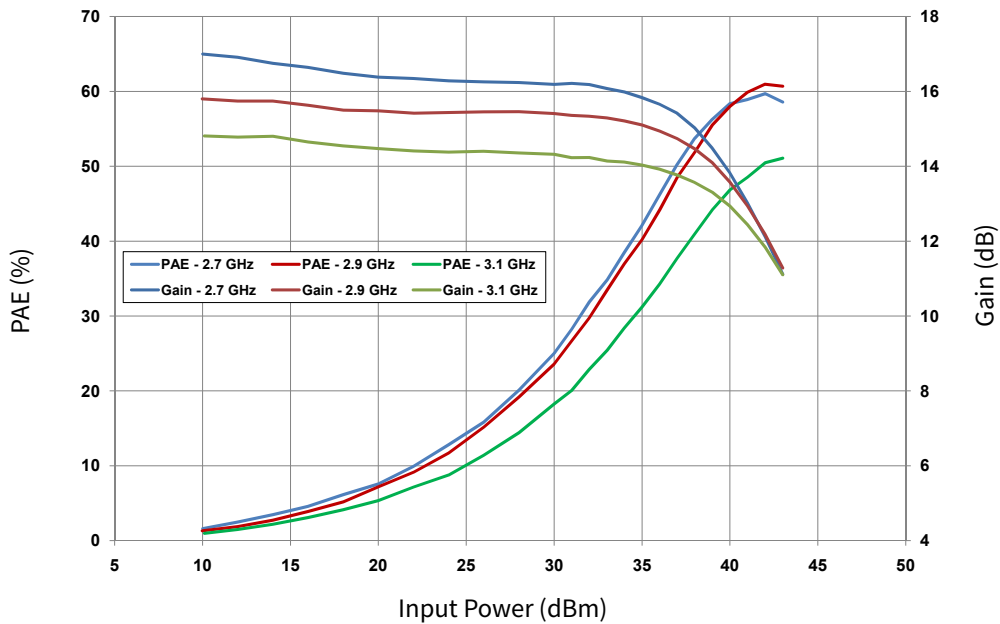
**Figure 2.** Typical Pulsed Output Power and Power Gain vs Frequency of the CGH31240F Measured in CGH31240F-AMP Amplifier Circuit  
 $V_{DS} = 28\text{ V}$ ,  $I_{DS} = 1\text{ A}$ ,  $P_{IN} = 42\text{ dBm}$ , Pulse Width =  $300\mu\text{s}$ , Duty Cycle = 20%



Typical Performance



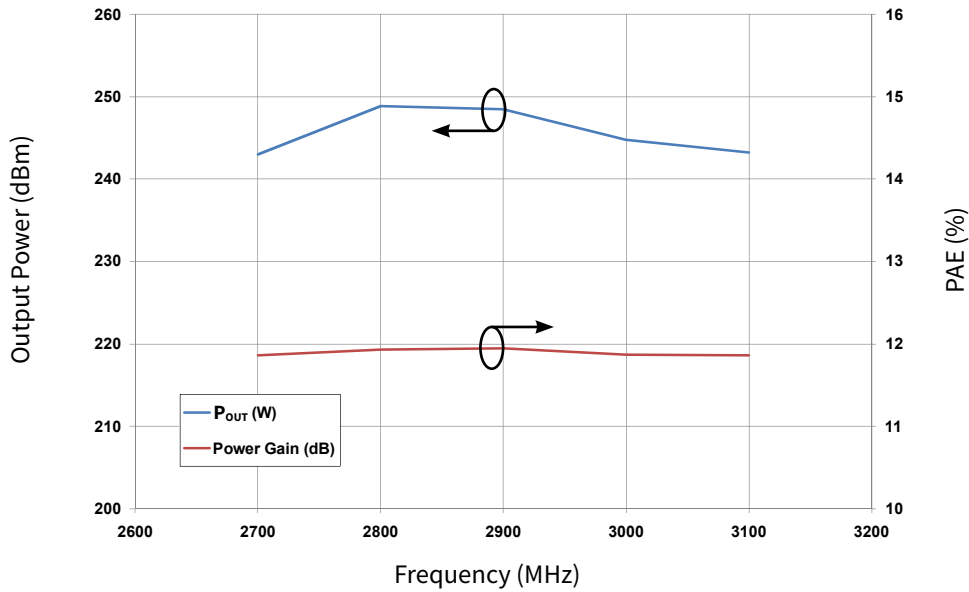
**Figure 3.** CGH31240F Output Power vs Input Power  
 $V_{DS} = 28\text{ V}$ ,  $I_{DS} = 1\text{ A}$ , Pulse Width =  $300\mu\text{s}$ , Duty Cycle = 20%



**Figure 4.** CGH31240F PAE & Gain vs Input Power  
 $V_{DS} = 28\text{ V}$ ,  $I_{DS} = 1\text{ A}$ , Pulse Width =  $300\mu\text{s}$ , Duty Cycle = 20%

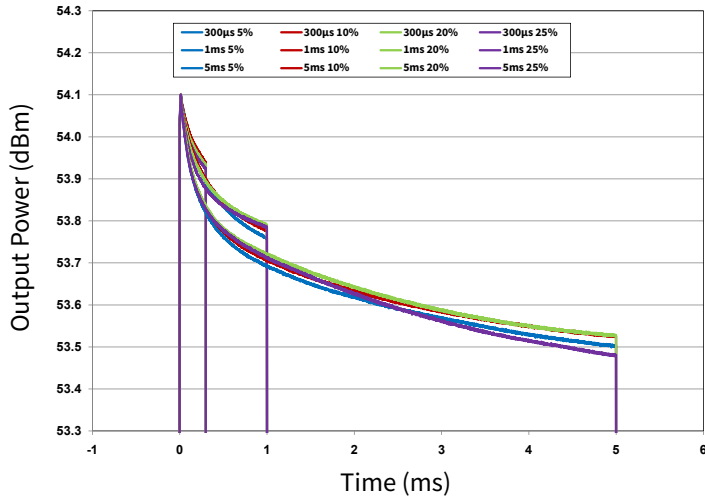


### Typical Performance



**Figure 5.** Typical Pulsed Output Power and Power Added Efficiency vs Frequency of the CGH31240F Measured in CGH31240F-AMP Amplifier Circuit  
 $V_{DS} = 28\text{ V}$ ,  $I_{DS} = 1\text{ A}$ ,  $P_{IN} = 42\text{ dBm}$ , Pulse Width =  $300\mu\text{s}$ , Duty Cycle = 20%

### Typical Pulse Droop Performance



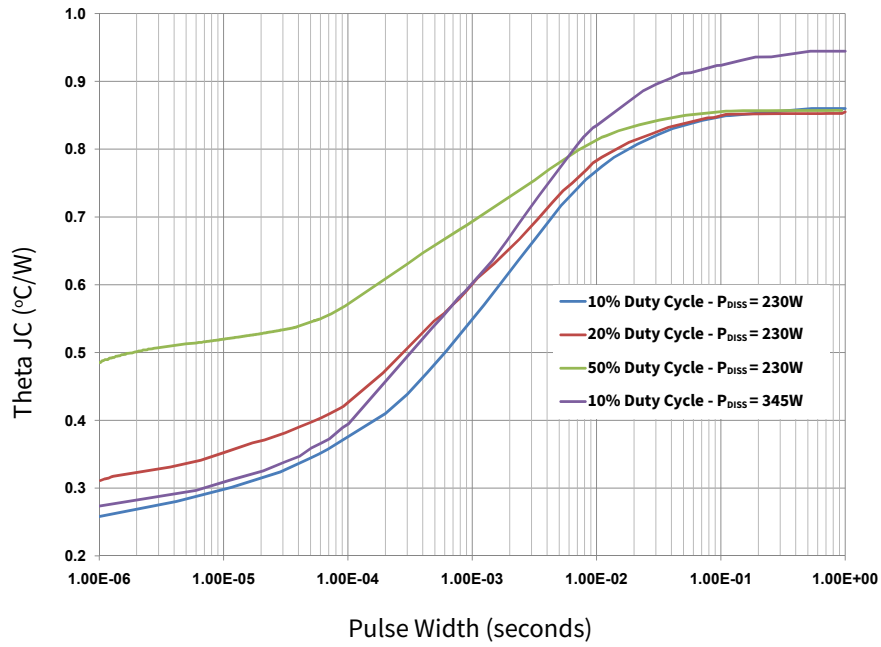
Pulse Width	Duty Cycle (%)	Droop (dB)
10µs	5-25	0.05
50µs	5-25	0.05
100µs	5-25	0.10
300µs	5-25	0.15
1ms	5-25	0.30
5ms	5-25	0.60

### Electrostatic Discharge (ESD) Classifications

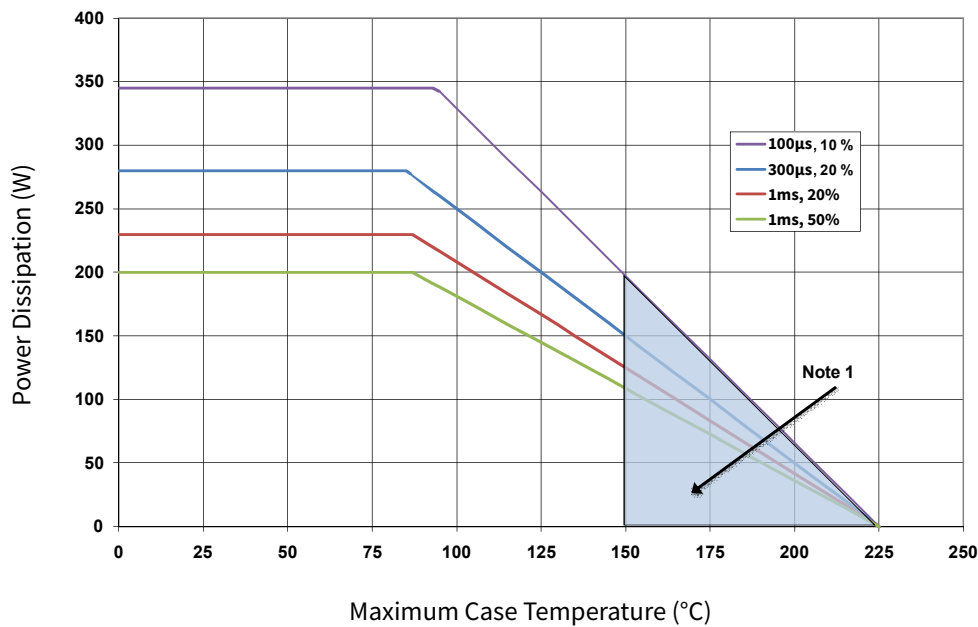
Parameter	Symbol	Class	Classification Level	Test Methodology
Human Body Model	HBM	TBD	ANSI/ESDA/JEDEC JS-001 Table 3	JEDEC JESD22 A114-D
Charge Device Model	CDM	TBD	ANSI/ESDA/JEDEC JS-002 Table 3	JEDEC JESD22 C101-C



### CGH31240F Pulse Transient Rth



### CGH31240F Transient Power Dissipation De-rating Curve



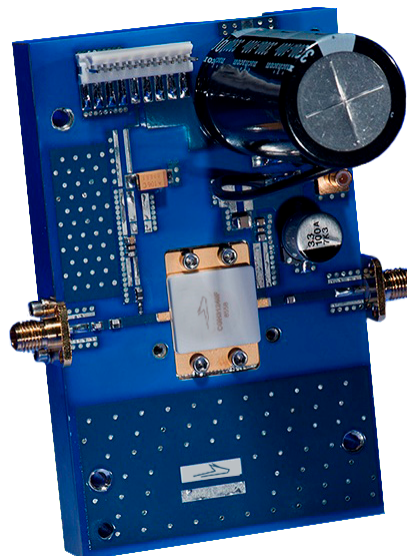
Note  
<sup>1</sup> Area exceeds Maximum Case Operating Temperature (See Page 2).



## CGH31240F-AMP Demonstration Amplifier Circuit Bill of Materials

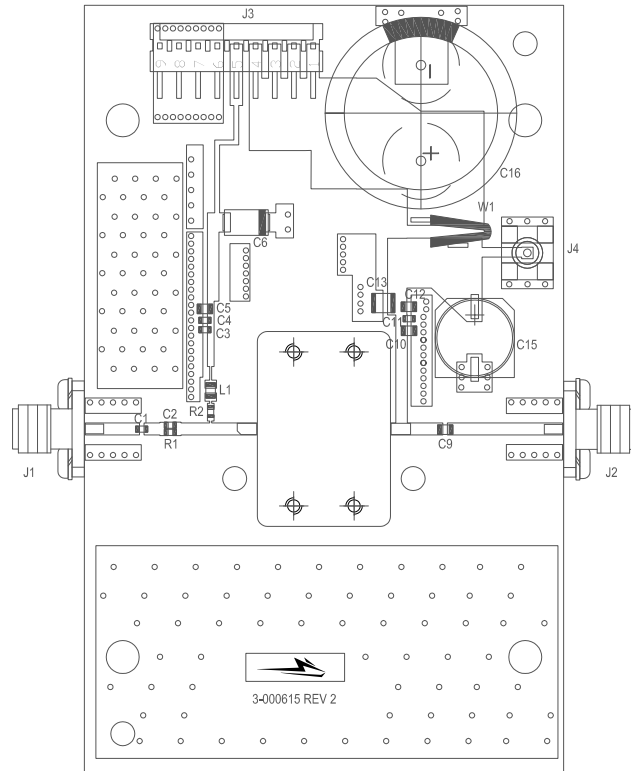
Designator	Description	Qty
R1	RES, 511 OHM, +/- 1%, 1/16W, 0603	1
R2	RES, 5.1, OHM, +/- 1%, 1/16W, 0603	1
C1, C3	CAP, 10.0pF, +/-5%, 250V, 0603, ATC600S	2
C2	CAP, 6.8pF, +/- 0.25pF, 250V, 0603, ATC600S	1
C4, C11	CAP, 470pF, +/-5%, 100V, 0603, X7R	2
C15	CAP, 33μF, 20%, G CASE	1
C5, C12	CAP, 33000pF, 0805, 100V, X7R	2
C13	CAP, 1.0μF, 100V, 10%, X7R, 1210	1
C6	CAP, 10μF, 16V, TANTALUM	1
C9, C10	CAP, 10pF, +/- 1%, 250V, 0805	2
C16	CAP, 3300μF, +/-20%, 100V, ELECTROLYTIC	1
J1, J2	CONN, SMA, PANEL MOUNT JACK, FL	2
J3	HEADER, RT>PLZ, 0.1CEN LK 9POS	1
J4	CONNECTOR, SMB, STRAIGHT, JACK, SMD	1
W1	CABLE, 18 AWG, 4.2	1
L1	FERRITE, 22 OHM, 0805, BLM21PG220SN1	1
-	PCB, RO4350, 2.5 X 4.0 X 0.030	1
Q1	CGH31240F	1

## CGH31240F-AMP Demonstration Amplifier Circuit

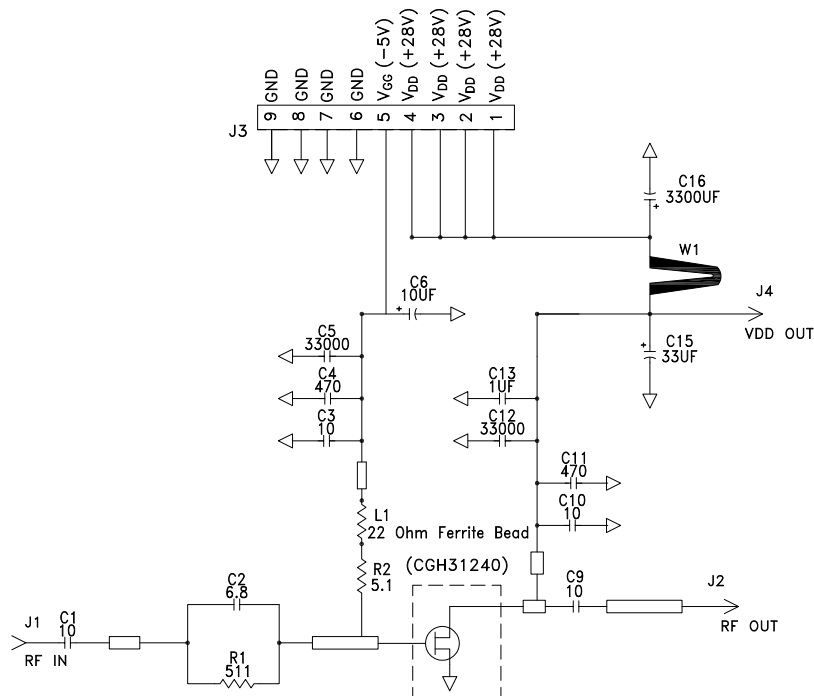




### CGH31240F-AMP Demonstration Amplifier Circuit Outline



### CGH31240F-AMP Demonstration Amplifier Circuit Schematic







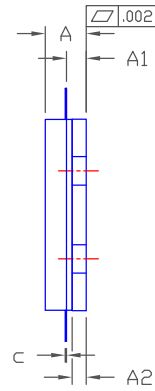
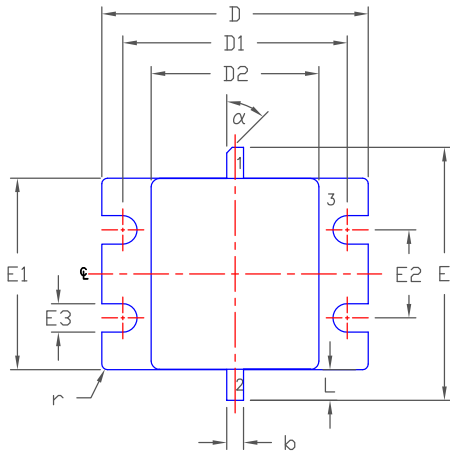
**Typical Package S-Parameters for CGH31240F**  
**(Small Signal,  $V_{DS} = 28$  V,  $I_{DQ} = 1000$  mA, angle in degrees)**

Frequency	Mag S11	Ang S11	Mag S21	Ang S21	Mag S12	Ang S12	Mag S22	Ang S22
500 MHz	0.970	170.7	1.73	35.7	0.003	-50.20	0.880	172.0
600 MHz	0.972	167.9	1.42	26.4	0.003	-58.75	0.891	169.5
700 MHz	0.973	165.2	1.21	17.6	0.003	-66.68	0.899	166.8
800 MHz	0.974	162.4	1.07	9.4	0.003	-74.07	0.906	163.9
900 MHz	0.975	159.5	0.96	1.6	0.003	-81.04	0.911	160.9
1.0 GHz	0.975	156.5	0.90	-6.0	0.003	-87.75	0.914	157.6
1.1 GHz	0.974	153.3	0.85	-13.4	0.004	-94.31	0.915	154.2
1.2 GHz	0.974	150.0	0.83	-20.8	0.004	-100.84	0.916	150.6
1.3 GHz	0.973	146.4	0.83	-28.3	0.004	-107.45	0.915	146.8
1.4 GHz	0.971	142.6	0.85	-35.9	0.004	-114.23	0.912	142.6
1.5 GHz	0.969	138.5	0.89	-43.9	0.005	-121.30	0.908	138.0
1.6 GHz	0.966	133.9	0.96	-52.3	0.006	-128.79	0.902	133.0
1.7 GHz	0.963	128.8	1.05	-61.3	0.007	-136.83	0.893	127.4
1.8 GHz	0.958	123.1	1.18	-71.0	0.008	-145.62	0.883	121.1
1.9 GHz	0.951	116.4	1.37	-81.8	0.009	-155.39	0.869	113.7
2.0 GHz	0.940	108.4	1.62	-93.8	0.012	-166.47	0.851	105.1
2.1 GHz	0.924	98.7	1.98	-107.7	0.015	-179.29	0.828	94.6
2.2 GHz	0.899	86.5	2.49	-123.9	0.019	165.52	0.796	81.7
2.3 GHz	0.857	70.5	3.19	-143.3	0.026	147.11	0.753	65.3
2.4 GHz	0.786	48.8	4.11	-167.0	0.034	124.49	0.692	44.1
2.5 GHz	0.677	19.2	5.14	164.4	0.044	97.04	0.607	17.1
2.6 GHz	0.544	-19.8	5.99	132.0	0.053	65.78	0.507	-14.9
2.7 GHz	0.448	-66.0	6.37	98.8	0.058	33.68	0.424	-47.8
2.8 GHz	0.422	-109.5	6.35	67.2	0.060	3.29	0.380	-76.4
2.9 GHz	0.427	-143.8	6.19	37.7	0.060	-25.00	0.369	-99.2
3.0 GHz	0.421	-171.5	6.08	9.2	0.060	-52.23	0.370	-117.6
3.2 GHz	0.243	120.6	6.20	-53.0	0.064	-111.80	0.279	-141.6
3.4 GHz	0.472	-78.8	4.79	-135.3	0.051	168.82	0.437	-99.1
3.6 GHz	0.821	-139.7	2.06	160.3	0.023	107.35	0.777	-131.3
3.8 GHz	0.897	-168.1	0.91	121.3	0.010	71.59	0.877	-153.9
4.0 GHz	0.919	173.9	0.46	92.8	0.005	46.59	0.915	-169.9
4.2 GHz	0.925	159.9	0.26	69.5	0.003	26.99	0.931	177.2
4.4 GHz	0.925	147.6	0.16	49.0	0.002	10.54	0.937	165.9
4.6 GHz	0.920	136.2	0.10	30.7	0.001	-3.53	0.937	155.2
4.8 GHz	0.913	124.8	0.07	13.6	0.001	-16.16	0.932	144.6
5.0 GHz	0.903	113.2	0.05	-2.9	0.001	-27.84	0.923	133.8
5.2 GHz	0.891	101.1	0.04	-19.3	0.001	-39.20	0.911	122.4
5.4 GHz	0.877	88.0	0.03	-35.8	0.000	-50.53	0.895	109.8
5.6 GHz	0.860	73.9	0.03	-52.2	0.000	-61.60	0.875	95.9
5.8 GHz	0.842	58.5	0.02	-68.3	0.000	-72.36	0.852	80.2
6.0 GHz	0.824	41.6	0.02	-83.9	0.000	-82.61	0.828	62.1

To download the s-parameters in s2p format, go to the [CGH31240F Product Page](#) and click on the documentation tab.



**Product Dimensions CGH31240F (Package Type — 440201)**



NOTES:

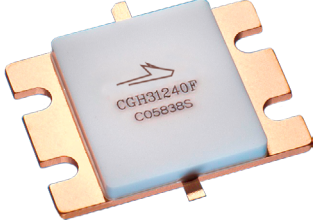
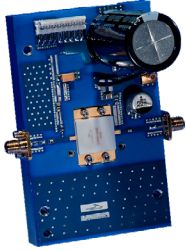
1. DIMENSIONING AND TOLERANCING PER ANSI Y14.5M - 1994.
2. CONTROLLING DIMENSION: INCH.
3. ADHESIVE FROM LID MAY EXTEND A MAXIMUM OF 0.020" BEYOND EDGE OF LID.
4. LID MAY BE MISALIGNED TO THE BODY OF PACKAGE BY A MAXIMUM OF 0.008" IN ANY DIRECTION.

DIM	INCHES		MILLIMETERS		NOTES
	MIN	MAX	MIN	MAX	
A	0.128	0.148	3.25	3.76	
A1	0.057	0.067	1.45	1.70	
A2	0.035	0.045	0.89	1.14	
b	0.055	0.065	1.40	1.65	2x
c	0.004	0.007	0.08	0.15	
D	0.948	0.958	24.08	24.33	
D1	0.798	0.808	20.27	20.52	
D2	0.595	0.605	15.11	15.37	
E	0.880	0.930	22.35	23.62	
E1	0.680	0.694	17.27	17.63	
E2	0.310	0.320	7.87	8.13	
E3	0.097	0.107	2.46	2.72	4x
L	0.095	0.125	2.41	3.18	2x
r	0.02	TYP	0.51	TYP	4x
α	45°	REF	45°	REF	

- PIN 1. GATE  
 2. DRAIN  
 3. SOURCE



## Product Ordering Information

Order Number	Description	Unit of Measure	Image
CGH31240F	GaN HEMT	Each	 A square, light blue GaN HEMT device mounted on a copper-colored carrier. The device has a white label with the Wolfstreak logo and the text "CGH31240F" and "C05B38S".
CGH31240F-AMP	Test board with GaN HEMT installed	Each	 A blue printed circuit board (PCB) test board with various electronic components, including a GaN HEMT device, capacitors, and connectors.

**For more information, please contact:**

4600 Silicon Drive  
Durham, NC 27703 USA  
Tel: +1.919.313.5300  
[www.wolfspeed.com/RF](http://www.wolfspeed.com/RF)

Sales Contact  
[RFSales@wolfspeed.com](mailto:RFSales@wolfspeed.com)

RF Product Marketing Contact  
[RFMarketing@wolfspeed.com](mailto:RFMarketing@wolfspeed.com)

## Notes & Disclaimer

---

Specifications are subject to change without notice. “Typical” parameters are the average values expected by Wolfspeed in large quantities and are provided for information purposes only. Wolfspeed products are not warranted or authorized for use as critical components in medical, life-saving, or life-sustaining applications, or other applications where a failure would reasonably be expected to cause severe personal injury or death. No responsibility is assumed by Wolfspeed for any infringement of patents or other rights of third parties which may result from use of the information contained herein. No license is granted by implication or otherwise under any patent or patent rights of Wolfspeed.

©2010-2022 Wolfspeed, Inc. All rights reserved. Wolfspeed® and the Wolfstreak logo are registered trademarks and the Wolfspeed logo is a trademark of Wolfspeed, Inc.  
PATENT: <https://www.wolfspeed.com/legal/patents>

*The information in this document is subject to change without notice.*