

- NOTES:
1. CRIMP CONTACTS SUPPLIED UNASSEMBLED.
 2. REFER TO DRAWING HPSFMISTD FOR CONTACT PATTERNS.
 3. DIMENSIONS ARE REFERENCE ONLY, IN INCHES [mm], WITHIN ±0.015 UNLESS OTHERWISE NOTED.

CABLE-END CONNECTOR PART NUMBERS:

S F 6 9 8 X - X P G - 5 X X

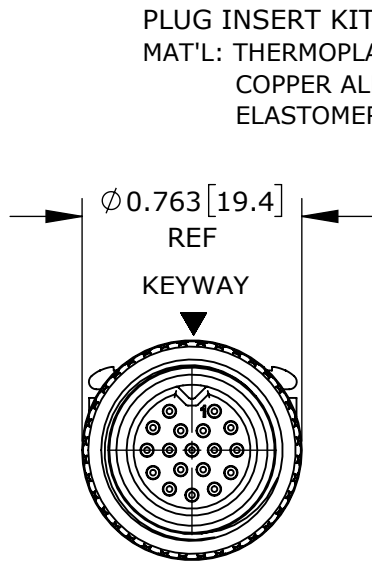
BACKSHELL KIT:
 520 = BACKSHELL WITH
 0.220 [5.6] GROMMET I.D.
 530 = BACKSHELL WITH
 0.330 [8.4] GROMMET I.D.

OF CONTACTS: 9 - 18

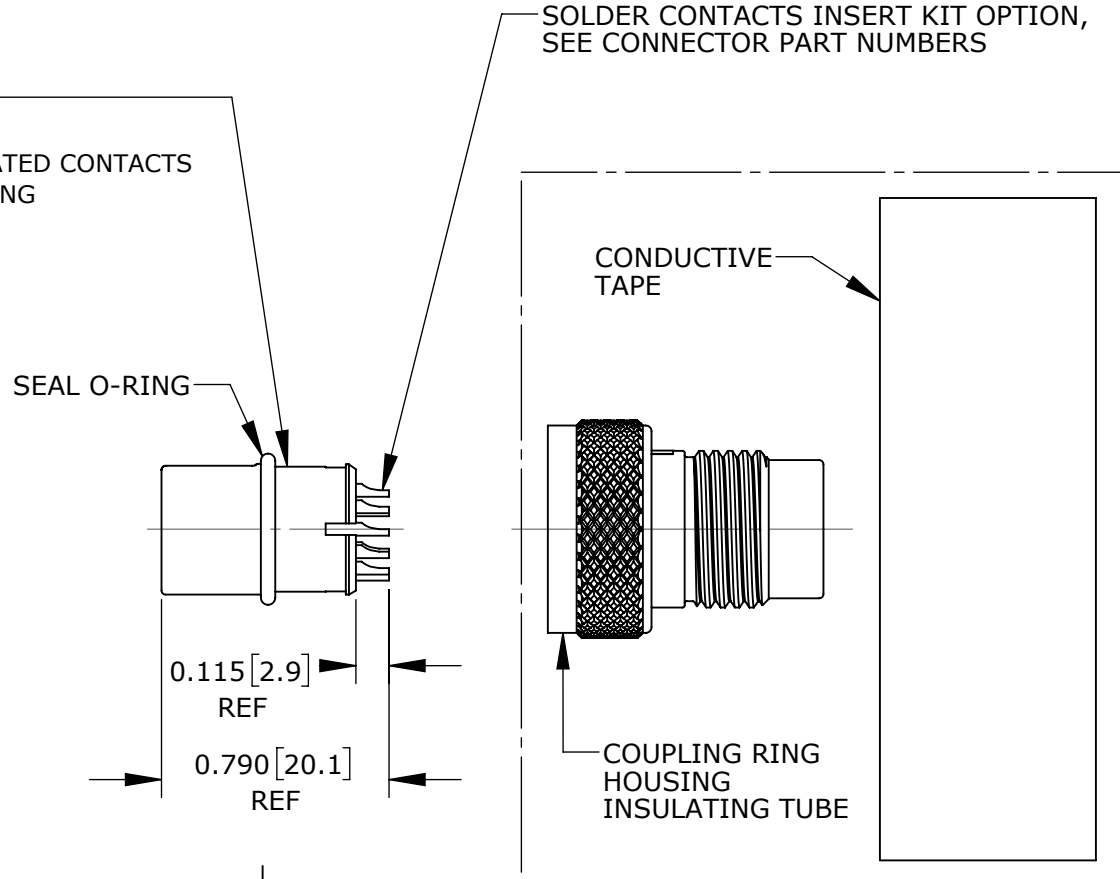
CONTACTS STYLE:
 0 = CRIMP
 2 = SOLDER

CUSTOMER PRINT

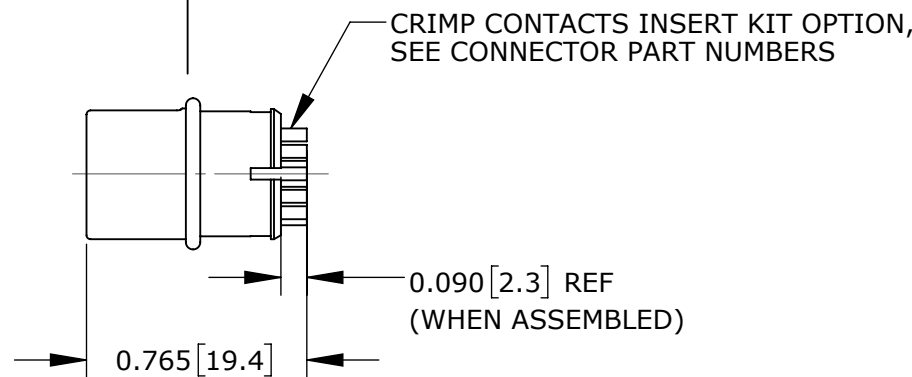
PART NUMBER: SF698X-XPG-5XX



FACE VIEW
SF6982-18PG-520 SHOWN



PLUG ASSEMBLY KIT
 MAT'L: COPPER ALLOY, NICKEL PLATED HOUSING & COUPLING RING,
 NICKEL/COPPER/POLYESTER FABRIC WITH CONDUCTIVE ADHESIVE TAPE,
 MYLAR INSULATING TUBE

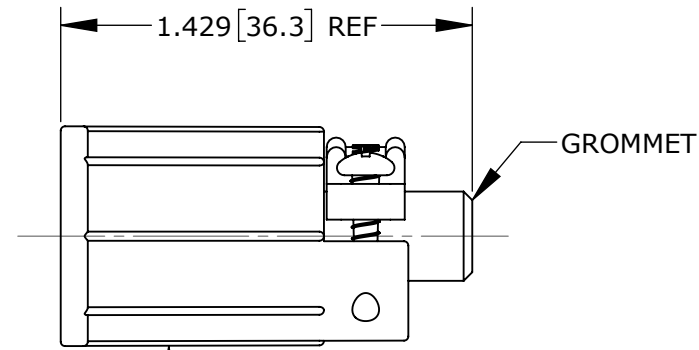


CUSTOMER APPROVAL

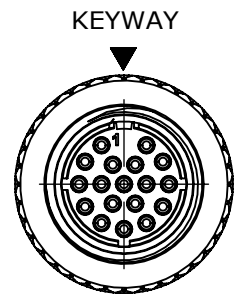
THIS DOCUMENT CONTAINS CONFIDENTIAL INFORMATION PROPRIETARY TO CONXALL CORPORATION. ANY REPRODUCTION, DISCLOSURE, OR USE OF THIS DOCUMENT /INFORMATION IS EXPRESSLY PROHIBITED UNLESS AUTHORIZED IN WRITING BY CONXALL CORPORATION.

APPROVED BY: _____
 DATE: _____

RoHS COMPLIANT



BACKSHELL KIT
 MAT'L: THERMOPLASTIC SHELL & STRAP,
 ELASTOMERIC GROMMET,
 STAINLESS STEEL SCREWS



WIRING VIEW
SF6982-18PG-520 SHOWN
WITHOUT BACKSHELL

0A	PNK	2-8-18	DRAWING CREATED PER PDR17006	
REV.	INIT.	DATE	DESCRIPTION	
			ORIG. DRAWN BY: PNK	DATE: 2-8-18
ALL INFORMATION ILLUSTRATED IS THE PROPERTY OF "CONXALL CORPORATION". UNAUTHORIZED DUPLICATION OR DISTRIBUTION OF THIS DOCUMENT IS PROHIBITED.			 601 E. WILDWOOD VILLA PARK, IL 60181	
ALL UNITS ARE IN FEET, INCHES, FRACTION OF INCHES AND DECIMALS. UNLESS OTHERWISE SPECIFIED TOLERANCES: 3 PLACE DECIMALS ±.005 ANGLES ±1° FRACTIONS ±1/16				
APPROVED BY:			TITLE: CABLE-END CONNECTOR 9-18 #26 PIN CONTACTS SHIELDED MINI-CON-X STANDARD PRODUCT	
SCALE	SIZE	SHEET	CUSTOMER:	
NTS	B	1 OF 1	SF698X-XPG-5XX	
FILE:	DIRECTORY:	PART NUMBER:	REV	
SF698X-XPG-5XX_CD	SLW	SF698X-XPG-5XX	0A	