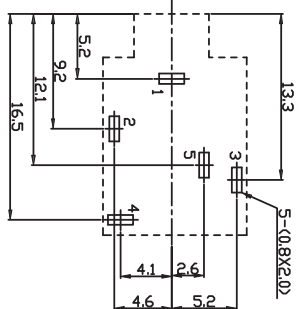
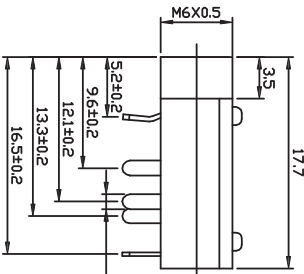
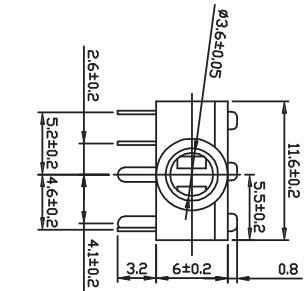


NO THREADS

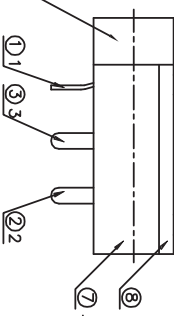
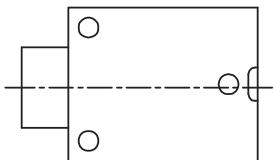
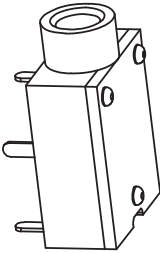
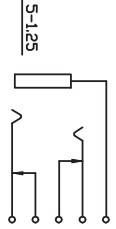
SERIES RSJ-362 5PIN



PCB LAYOUT TOP VIEW

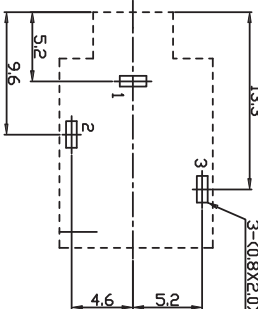


CIRCUIT DIAGRAM

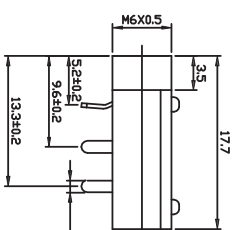
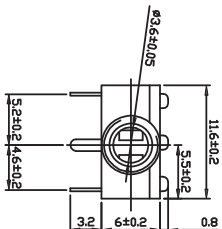


NO THREADS

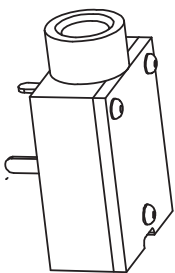
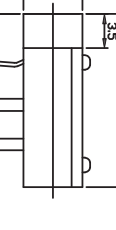
SERIES RSJ-363 3PIN



PCB LAYOUT TOP VIEW



CIRCUIT DIAGRAM



⑧	COVER	PC-PI-3065A-Za	1	PC UL94V-0	
⑦	HOUSING	PI-PI-3065A-Zz	1	PBT UL94V-0	
⑥	FIX TURN	MS-PI-3065A-Qc	1	H59	CuSn-Plated
⑤	TERMINAL	MT-PI-3065A-5Q.S	1	BRASS t=0.3	Ag-Plated
④	TERMINAL	MT-PI-3065A-4Q.S	1	BRASS t=0.3	Ag-Plated
③	TERMINAL	MT-PI-3065A-3Q.S	1	BRASS t=0.3	Ag-Plated
②	TERMINAL	MT-PI-3065A-2Q.S	1	BRASS t=0.3	Ag-Plated
①	TERMINAL	MT-PI-3065A-1Q.S	1	BRASS t=0.45	Ag-Plated
No.	PART NAME		QTY	MATERIAL (THICK. COLOR)	REMARK



SCALE NONE

TOLERANCE EXCEPT AS NOTED

DEC. MILLIMETERS

±0.5

±0.3

±0.15

ANG. ±3°


Research Develop Innovate
 RD1, Inc. 333 North Bedford Road, Suite 135, Mount Kisco, NY 10549

TITLE STEREO JACK-ROHS COMPLIANT

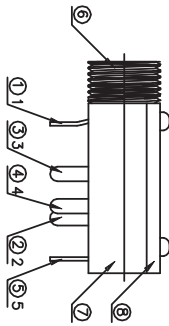
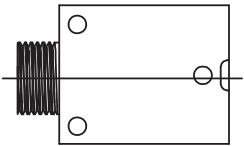
DR. JOEY DATE 8/22/01 REF. P/N: RSJ-36XX-NL SHEET 1 OF 4

CK. SL PRE- JK DRAWING NO. 0503 SIZE REV. D

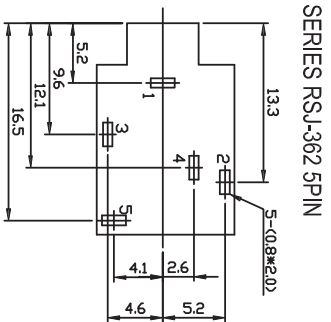
THIS DOCUMENT IS OWNED BY, AND THE INFORMATION CONTAINED IN IT IS PROPRIETARY TO, RD1. BY RECEIPT HEREOF THE HOLDER AGREES NOT TO USE THE INFORMATION AND NOT TO DISCLOSE IT TO ANY THIRD PARTY. NDR REPRODUCE THIS DOCUMENT WITHOUT THE WRITTEN CONSENT OF RD1, AND AGREES TO RETURN THIS DOCUMENT FORTHWITH UPON REQUEST.

13-030	03/27/13	D	CHANGE PAGE #1 PCB LAYOUT AND DIMENSIONS TO MATCH PAGE #2
10-269	10/15/10	C	Change to SERIES DWG TO P/N RSJ-36XX-NL
06-136	02/25/06	B	CHANGED THE PART TO ROHS COMPLIANT
02-390	9/12/02	A	P/N RSJ-362/363 WAS RSJ-HCY-352, REVISED DWG. & SPECS AS SHOWN
ECN#	DATE	SYM	REVISION RECORD

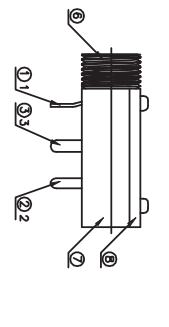
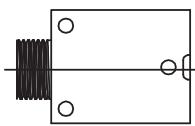
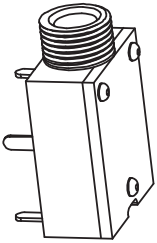
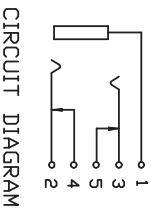
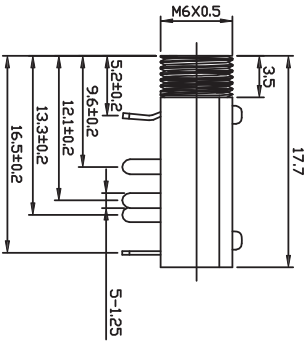
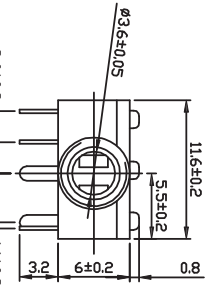
BC	TL
CP	AL
VC	JY
BM	JY
AUTH	BY



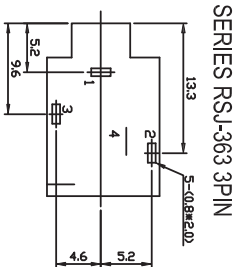
WITH THREADS



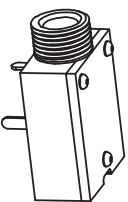
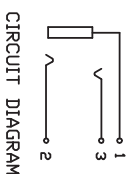
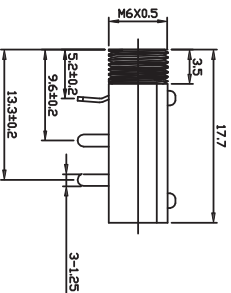
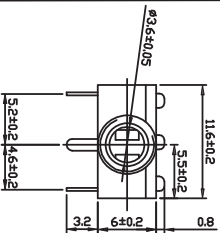
PCB LAYOUT TOP VIEW



WITH THREADS



PCB LAYOUT TOP VIEW



⑧	COVER	PC-PJ-3065A-Z.3	1	PC UJ94V-0	
⑦	HOUSING	PH-PJ-3065A-Z.2	1	PBT UJ94V-0	
⑥	FIX TURN	MS-PJ-3065AM-Q.4S	1	H59	Ag-Plated
⑤	TERMINAL	MT-PJ-3065A-5Q.3S	1	BRASS t=0.30	Ag-Plated
④	TERMINAL	MT-PJ-3065A-4Q.3S	1	BRASS t=0.30	Ag-Plated
③	TERMINAL	MT-PJ-3065AM-3Q.1S	1	PHOSPHOR BRONZE t=0.30	Ag-Plated
②	TERMINAL	MT-PJ-3065AM-2Q.1S	1	PHOSPHOR BRONZE t=0.30	Ag-Plated
①	TERMINAL	MT-PJ-3065AM-1Q.3S	1	BRASS t=0.45	Ag-Plated
No.	PART NAME		QTY	MATERIAL(THICK, COLOR)	REMARK

PROJECTION	
SCALE	NONE
TOLERANCE EXCEPT AS NOTED	
DEC. MILLIMETERS	±0.5
ANG.	±3°

		Research Develop Innovate	
RDI, Inc. 333 North Bedford Road, Suite 135, Mount Kisco, NY 10549			
TITLE	STEREO JACK-ROHS COMPLIANT	DATE	8/22/01
DR.	JOEY	REF.	P/N: RSJ-36XX-NL
CK.	SL	DRAWING NO.	0503
SIZE	F	REV.	D
SHEET	2 OF 4		

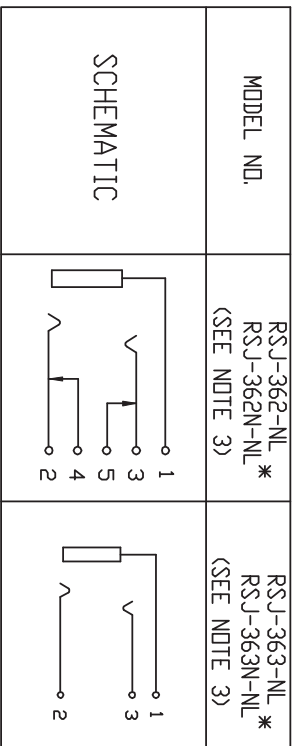
13-030	03/27/13	D	CHANGE PAGE #1 PCB LAYOUT AND DIMENSIONS TO MATCH PAGE #2
10-269	10/15/10	C	Change to SERIES DWG TO P/n RSJ-36XX-NL
06-136	02/25/06	B	CHANGED THE PART TO ROHS COMPLIANT
02-390	9/12/02	A	P/N RSJ-362/363 WAS RSJ-HCY-352, REVISED DWG. & SPECS AS SHOWN
ECN#	DATE	SYM	REVISION RECORD

BC	TL
CP	AL
VC	JY
BM	JY
AUTH	BY

THIS DOCUMENT IS OWNED BY, AND THE INFORMATION CONTAINED IN IT IS PROPRIETARY TO, RDI, BY RECEIPT HEREOF THE HOLDER AGREES NOT TO USE THE INFORMATION AND NOT TO DISCLOSE IT TO ANY THIRD PARTY, NOR REPRODUCE THIS DOCUMENT WITHOUT THE WRITTEN CONSENT OF RDI, AND AGREES TO RETURN THIS DOCUMENT FORTHWITH UPON REQUEST.

SPECIFICATION

P/N: RSJ-36XX-NL



* N: NON THREADED BUSHING

- NOTES:
1. ALL DIMS ARE GIVEN IN MM.
 2. SEE SHEETS 2 & 3 FOR SPECIFICATIONS
 3. THERE ARE TWO KINDS OF THE BUSHING
 - A. WITH SCREW THREAD: M6XP0.5
 - B. W/O SCREW THREAD: $\phi 6$ mm

13-030	03/27/13	D	CHANGE PAGE #1 PCB LAYOUT AND DIMENSIONS TO MATCH PAGE #2
10-269	10/15/10	C	Change to SERIES DWG TO P/N RSJ-36XX-NL
06-136	02/25/06	B	CHANGED THE PART TO ROHS COMPLIANT
02-390	9/12/02	A	P/N RSJ-362/363 WAS RSJ-HCY-352, REVISED DWG. & SPECS AS SHOWN
ECN#	DATE	SYM	REVISION RECORD

RATING:	DC 50V 0.3A	
PRACTICAL TEMPERATURE RANGE	-16-65°C	
STANDARD ATMOSPHERIC CONDITIONS	UNLESS OTHERWISE SPECIFIED THE STANDARD RANGE OF ATMOSPHERIC CONDITIONS FOR MAKING MEASUREMENTS AND TESTS ARE AS FOLLOWS: (1) BETWEEN BODY AND CONDUCTOR: 5°C TO 35°C (2) BETWEEN CONDUCTORS NOT TO BE CONTACT: 45% TO 85% (3) PRESSURE: 86kpa TO 106kpa	
MECHANICAL		
ITEM	TEST CONDITIONS	PERFORMANCE
1 CONNECTION FORCE	MEASUREMENT SHALL BE MADE AFTER CONNECTIONS AND DISCONNECTING USING STANDARD PLUG GAUGE 3 TIMES.	3-20N
2 DISCONNECTION FORCE ELECTRICAL	MEASUREMENT SHALL BE MADE AFTER CONNECTIONS AND DISCONNECTING USING STANDARD PLUG GAUGE 3 TIMES.	3-20N
MECHANICAL		
ITEM	TEST CONDITIONS	PERFORMANCE
3.1 CONTACT RESISTANCE	MEASURED AT SMALL CORRENT (100mA OR LESS) 1000Hz APPLY A VOLTAGE OF 500V DC FOR 1 MIN TO FOLLOWING PORTIONS AFTER WHICH MEASUREMENT SHALL BE MADE: (1) BETWEEN BODY AND CONDUCTOR (2) BETWEEN CONDUCTORS NOT TO BE CONTACT (3) BETWEEN CONDUCTORS NOT TO BE WHEN PLUG IS INSERTED DC 500V 1MIN	$\leq 0.03\Omega$
3.2 INSULATION RESISTANCE	AC 500V (ms(50-60Hz) FOR 1 MIN TRIP CURRENT: 0.5mA (1) BETWEEN BODY AND CONDUCTOR (2) BETWEEN CONDUCTORS NOT TO BE CONTACT (3) BETWEEN CONDUCTORS NOT TO BE WHEN PLUG IS INSERTED DC 500V 1 MIN	$\geq 100M\Omega$
3.3 DIELECTRIC STRENGTH	WITHOUT DAMAGE TO PARTS ARCING OR BREAKDOWN ETC	



PROJECTION
SCALE NONE
TOLERANCE EXCEPT AS NOTED
DEC. MILLIMETERS
X. ± 0.3
X.X ± 0.15
X.XX ± 0.05
ANG. $\pm 3^\circ$

RDI Research Develop Innovate
RDI, Inc. 333 North Bedford Road, Suite 135, Mount Kisco, NY 10549

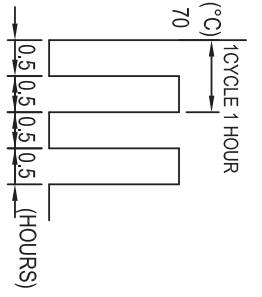
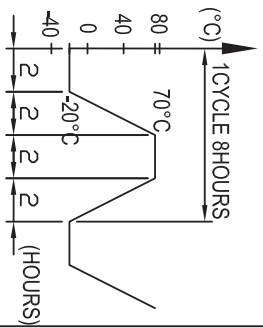
TITLE STEREO JACK-ROHS COMPLIANT

DR. JOEY DATE 8/22/01 REF. P/N: RSJ-36XX-NL SHEET 3 OF 4
CK. SL PRE-JK DRAWING NO. 0503 REV. D

THIS DOCUMENT IS OWNED BY, AND THE INFORMATION CONTAINED IN IT IS PROPRIETARY TO, RDI. BY RECEIPT HEREOF THE HOLDER AGREES NOT TO USE THE INFORMATION AND NOT TO DISCLOSE IT TO ANY THIRD PARTY, NOR REPRODUCE THIS DOCUMENT WITHOUT THE WRITTEN CONSENT OF RDI, AND AGREES TO RETURN THIS DOCUMENT FORTHWITH UPON REQUEST.

URABILITY ITEM	TEST CONDITIONS	PERFORMANCE
4.1 SOLDERABILITY TEST	THE TOP OF THE TERMINALS SHALL BE DIPPED 1mm IN THE SOLDER BATH OF 240±5°C FOR 3±0.5 SECONDS	(1) SOLDER WETTING TIME SHALL BE 3 SEC OR LESS (2) THE AREA OF SOLDERING SHOULD BE OVER 75%
4.2 RESISTANCE TO SOLDERING HEAT TEST	SOLDERING IRON METHOD: BIT TEMPERATURE 330±5°C APPLICATION TIME OF SOLDERING IRON 3±0.5 SEC HOWEVER EXCESSIVE PRESSURE SHALL NOT BE APPLIED TO THE TERMINAL	WITHOUT DEFORMATION OF CASE OR EXCESSIVE LOOSENESS OF TERMINALS ELECTRICAL CHARACTERISTICS SHALL BE SATISFIED
4.3 HUMIDITY TEST	THE JACK SHALL BE STORED AT A TEMPERATURE OF 40±2°C AND A HUMIDITY OF 90% TO 96% FOR 96 HOURS. THEN THE JACK SHALL BE MAINTAINED AT STANDARD ATMOSPHERIC CONDITION FOR 1 HOUR FOR OTHER PROCEDURES.	THERE SHALL BE NO DAMAGE ON APPEARANCE MECHANICAL AND ELECTRICAL CHARACTERISTICS SHALL BE SATISFIED.
4.4 HEAT TEST	THE JACK SHALL BE STORED AT A TEMPERATURE OF 70±2°C FOR 96 HOURS, AND THEN IT SHALL BE SUBJECTED TO THE CONTROLLED RECOVERY MEASUREMENT	THERE SHALL BE NO DAMAGE ON APPEARANCE MECHANICAL AND ELECTRICAL CHARACTERISTICS SHALL BE SATISFIED.
4.5 COLD TEST	THE JACK SHALL BE STORED AT A TEMPERATURE OF -25±3°C FOR 96 HOURS AND THEN IT SHALL BE SUBJECTED TO THE CONTROLLED RECOVERY CONDITIONS FOR 1 HOUR AFTER WHICH	THERE SHALL BE NO DAMAGE ON APPEARANCE MECHANICAL AND ELECTRICAL CHARACTERISTICS SHALL BE SATISFIED.
4.6 LIFE TEST	WITHOUT LOAD CONNECTION AND DISCONNECTION SHALL BE MADE WITH THE MATING PLUG AND JACKS FOR 5,000 CYCLES AT A SPEED OF 10 TO 25 CYCLES/MIN	(1) CONTACT RESISTANCE SHALL BE ≤0.1Ω (2) DISCONNECTION FORCE SHALL BE 3 TO 20N (3) MECHANICAL AND ELECTRICAL CHARACTERISTICS SHALL BE SATISFIED

4.7 TEMPERATURE CYCLING TEST	THE JACK SHALL BE SUBJECTED TO 5 CYCLES OF THE FOLLOWING CONDITIONS SHOWN IN THE FIGURE AND THEN SHALL RETURNED ALLOWD TO REMAIN IN ROOM AMBIENT CONDITION FOR 30 MINUTES	THERE SHALL BE NO DEFORMATION OF CRACKS IN MOLDED PART INSERTION&EXTRACTION FORCE: 3 TO 20 N CONTACT RESISTANCE: MAX 30MΩ INSULATION RESISTANCE: MIN 100MΩ DIELECTRIC WITHSTANDING VOLTAGE: 500VAC/MIN(BETWEEN TERMINALS)
4.8 COLD&HEAT SHOCK TEST	THE JACK SHALL BE SUBJECTED TO 5 CYCLES OF THE FOLLOWING CONDITIONS SHOWN IN THE FIGURE AND THEN SHALL RETURNED ALLOWD TO REMAIN IN ROOM AMBIENT CONDITION FOR 30 MINUTES	THERE SHALL BE NO DEFORMATION OF CRACKS IN MOLDED PART INSERTION&EXTRACTION FORCE: 3 TO 20 N CONTACT RESISTANCE: MAX 30MΩ INSULATION RESISTANCE: MIN 100MΩ DIELECTRIC WITHSTANDING VOLTAGE: 500VAC/MIN(BETWEEN TERMINALS)



ECN#	DATE	SYM	REVISION RECORD
13-030	03/27/13	D	CHANGE PAGE #1 PCB LAYOUT AND DIMENSIONS TO MATCH PAGE #2
10-269	10/15/10	C	Change to SERIES DWG TO P/N RSJ-36XX-NL
06-136	02/25/06	B	CHANGED THE PART TO ROHS COMPLIANT
02-390	9/12/02	A	P/N RSJ-36E2/363 WAS RSJ-HCY-352, REVISED DWG. & SPECS AS SHOWN

PROJECTION

SCALE NONE

TOLERANCE EXCEPT AS NOTED

DEC. MILLIMETERS	CP	TL
X. ±0.5	VC	AL
±0.3	JY	JY
±0.15	BM	JY
ANG. ±3°	AUTH	BY

RD1 Research Develop Innovate

RD1, Inc. 333 North Bedford Road, Suite 135, Mount Kisco, NY 10549

TITLE STEREO JACK-ROHS COMPLIANT

DR.	DATE	REF.	SHEET
JOEY	8/22/01	P/N: RSJ-36XX-NL	4 OF 4
SL	PRE-	DRAWING NO. 0503	REV. D

THIS DOCUMENT IS OWNED BY, AND THE INFORMATION CONTAINED IN IT IS PROPRIETARY TO, RD1, BY RECEIPT HEREOF THE HOLDER AGREES NOT TO USE THE INFORMATION AND NOT TO DISCLOSE IT TO ANY THIRD PARTY, NOR REPRODUCE THIS DOCUMENT WITHOUT THE WRITTEN CONSENT OF RD1, AND AGREES TO RETURN THIS DOCUMENT FORTHWITH UPON REQUEST.