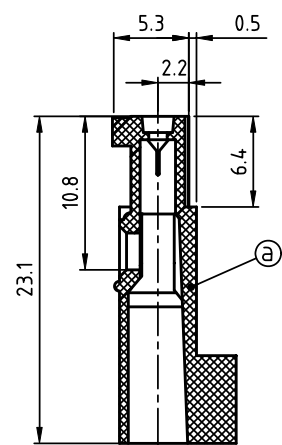
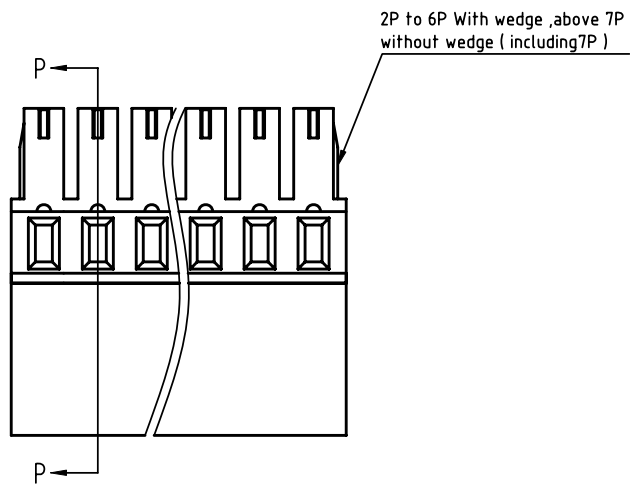
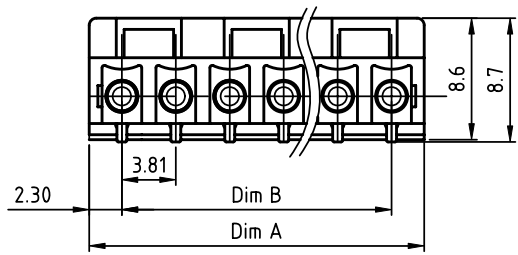


PRODUCT NUMBER	PITCH
Klxx30x100J0G	3.81 mm



Section P-P

- Material:
- Item@ Terminal housing: Thermoplastic (UL94 V-0)
- Electrical
- Voltage rating: 160V
 - Current rating: 8A
 - Wire range: 1.0~1.2mm²
 - Withstanding Voltage: 1.32KV
 - Corresponding female crimp contacts:A0 3.81 series

PART NO.: KI xx 30 x 1 00J0 G

N=number of poles

Dim A=(N-1)x3.81+4.60
Dim B=(N-1)x3.81

Poles	2P~6P	7P~12P	13P~18P	19P~24P
Dim A	±0.20	±0.25	±0.30	±0.35
Dim B	±0.15	±0.20	±0.25	±0.30

Solid block	No. of poles	Color	RoHS compliant (lead<4%) In copper Alloy
0	2	Black (RAL9005)	
02	2 poles	Red (RAL3001/D)	
03	3 poles	Orange(RAL2011/P)	
4	3 poles	Yellow(RAL1018/A)	
5	...	Green(RAL6018/T)	
6	24 poles	Blue (RAL5015/A)	
8		Grey(RAL7035/D)	
9		White(RAL1102)	
C		Green(RAL6018/U)	

mat'l. code		surface ASME Y14.5	tolerance ASME Y14.5	projection	product family
ltr	ecn no	dr	date	MM	TERMINAL BLOCK
tolerances unless otherwise specified				MM	title
angles	0	X.±0.5			TERMINAL BLOCK
0	1	X.X±0.3			PLUGGABLE PLUG, CRIMP CONNECTION, WITH HIGH PROFILE
X*±1°	1	X.XX±0.1		scale	
dr	EVIN ZHONG	050414		FCI	dwg no
enrg	EVIN ZHONG	050414			sheet 1 of 1
chr	HANKE FENG	050414			size
appd	SHI JUN	050414			Klxx30x100J0G
sheet index	revision sheet	A	1		A4
					type
					CUSTOMER Drawing