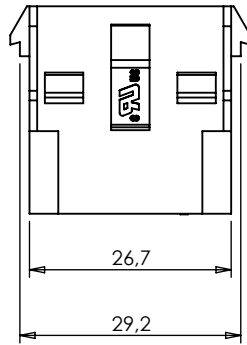
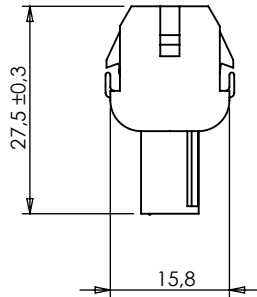
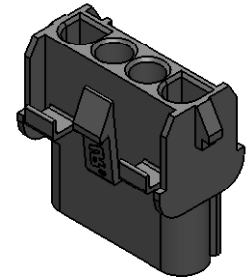
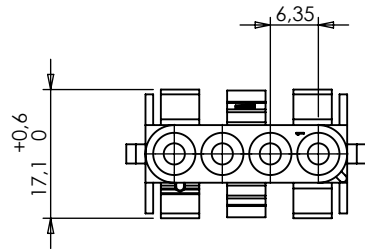
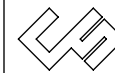


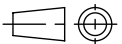
This drawing and all informations contained here can not be used or reproduced, integrity or partially, without written authorization by Colombo Sergio & Figli.



5	Added UL & CSA symbols	09-11-2011
4	Updated raw materials table and title box	23-02-2011
3	Updated drawing	10-11-2005
2	Updated total weight	27-03-2002
1	Updated tolerances	02-12-1999
INDEX	MODIFICATION	DATE



COLOMBO SERGIO e Figli S.r.l.
 20063 CERNUSCO S/N - VIA COMO, 11
 TEL +39.02.9210.7404 - FAX +39.02.9210.0217
 http://www.cscolombo.com - e-mail: info@cscolombo.com



CHECKED BY	DATE	DESIGN UNITS
Stefano Scaglioni	23-02-2011	METRIC
DRAWN BY	DATE	WEIGHT
Stefano Querzoli	23-02-2011	

DIMENSIONS WITHOUT TOLERANCES		CS-LK04F	PA66 UL94 V-2	
		CS-LK04FV0	PA6/66 UL94 V-0	
		CS-LK04FSTY	PA46 UL94 V-2	
$\angle \pm 2^\circ$	0 - 6	± 0.1	CS-LK04FV0750NF	PA66 UL94 V-0 GWIT 775
	6 - 30	± 0.2	CS-LK04F-G	PA6 UL94 V-2 GWIT 775
	> 30	± 0.3	PART NUMBER	MATERIAL

SCALE	CAD REFER	SIZE	INDEX 0
1:1	Y:\dis\cs\lk\04vie\fl	A4	15-11-1997
BASE CODE		DESCRIPTION	
CS-LK04F		4 poles cap housing for LKseries terminal diam. 2.12mm	