

Features

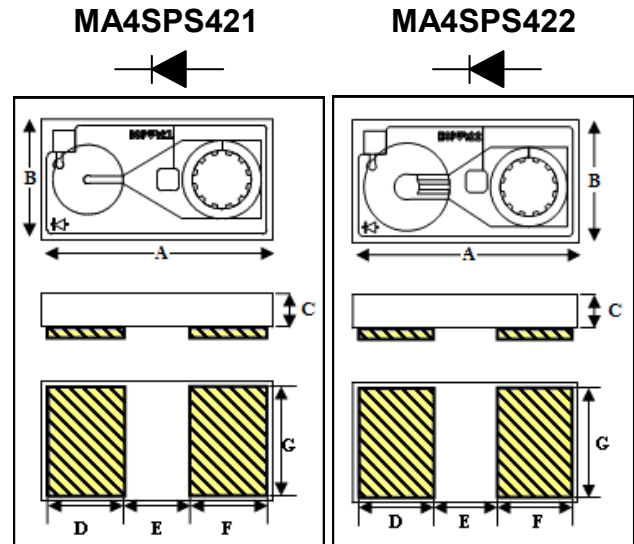
- Surface Mount
- No Wire Bonding Required
- Rugged Silicon-Glass Construction
- Silicon Nitride Passivation
- Polymer Scratch Protection
- Low Parasitic Capacitance and Inductance
- Higher Average and Peak Power Handling
- RoHS Compliant* and 260° Reflow Compatible

Description

This device is a Silicon-Glass PIN diode chip fabricated with M/A-COM Technology Solutions patented HMIC™ process. This device features two silicon pedestals embedded in a low loss, low dispersion glass. The diode is formed on the top of one pedestal and connections to the backside of the device are facilitated by making the pedestal side-walls electrically conductive. Selective backside metallization is applied producing a surface mount device. This vertical topology provides for exceptional heat transfer. The topside is fully encapsulated with silicon nitride and has an additional polymer layer for scratch and impact protection. These protective coatings prevent damage to the junction and the anode air-bridge during handling and assembly.

Applications

These surmount devices are suitable for usage in moderate incident power (10W C.W.) or higher incident peak power (500W) series, shunt, or series-shunt switches. Lower parasitic inductance, 0.1 to 0.2nH, and excellent RC constant (0.45pS), make the devices ideal for higher frequency switch elements compared to their plastic device counterparts.



1. Backside metal: 0.1 μm thick.
2. Yellow hatched areas indicate backside ohmic gold contacts.
3. All devices have the same outline dimensions (A to G).

DIM	INCHES		MM	
	MIN.	MAX.	MIN.	MAX.
A	0.040	0.042	1.025	1.075
B	0.021	0.023	0.525	0.575
C	0.004	0.008	0.102	0.203
D	0.013	0.015	0.325	0.375
E	0.011	0.013	0.275	0.325
F	0.013	0.015	0.325	0.375
G	0.019	0.021	0.475	0.525

Absolute Maximum Ratings @ $T_A = 25^\circ\text{C}$ (unless otherwise specified)

Parameter	Absolute Maximum
Forward Current	250mA
Reverse Voltage	-200V
Operating Temperature	-55°C to +125°C
Storage Temperature	-55°C to +150°C
Junction Temperature	+175°C
Dissipated Power (RF & DC)	1.8W
Mounting Temperature	+280°C for 30 seconds

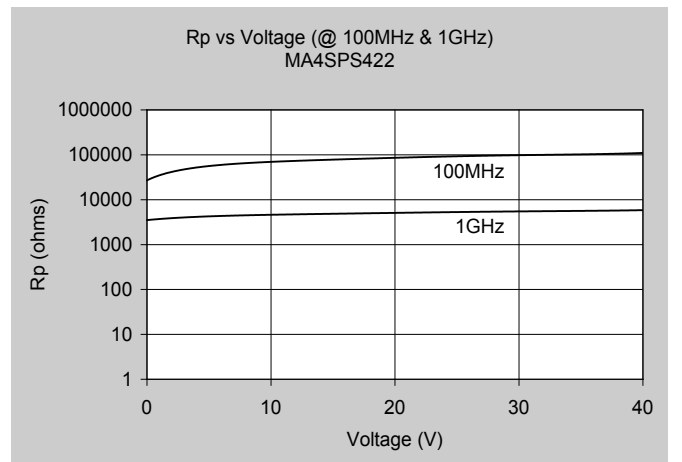
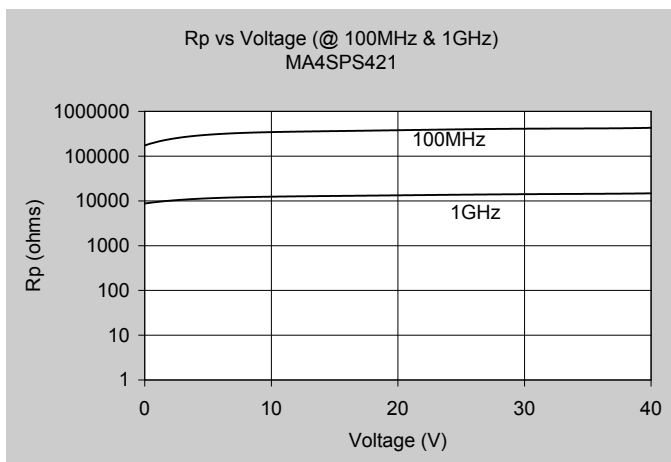
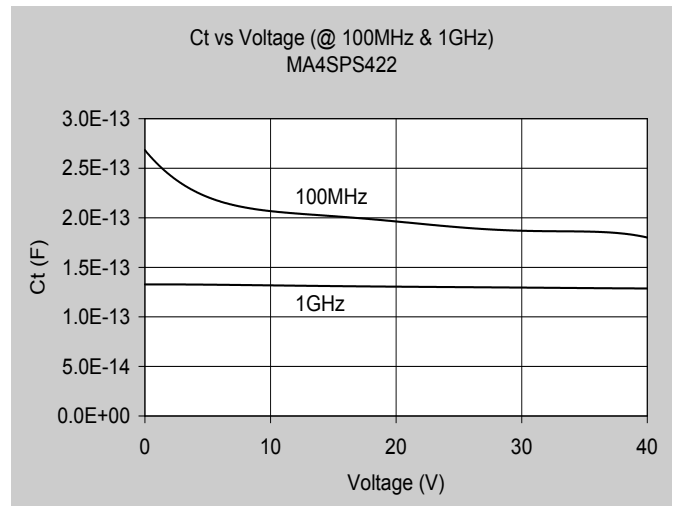
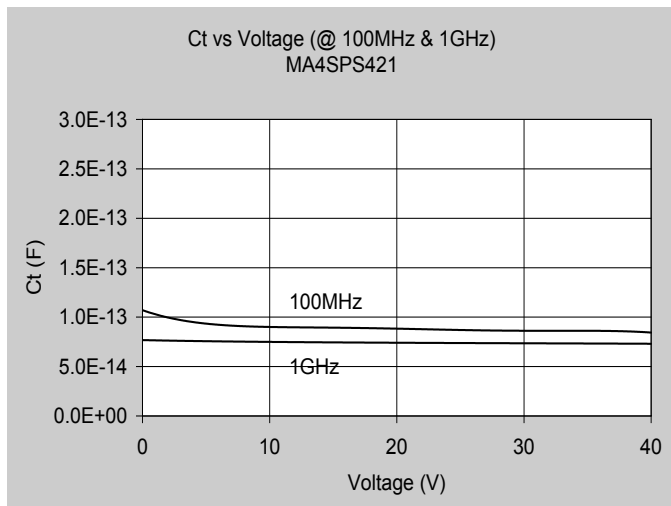
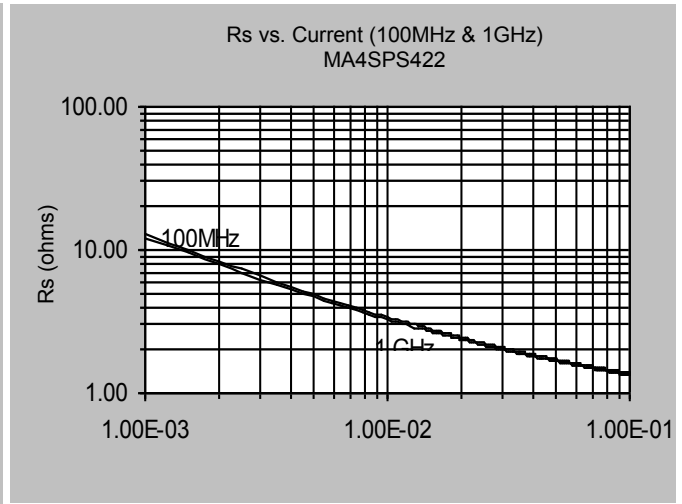
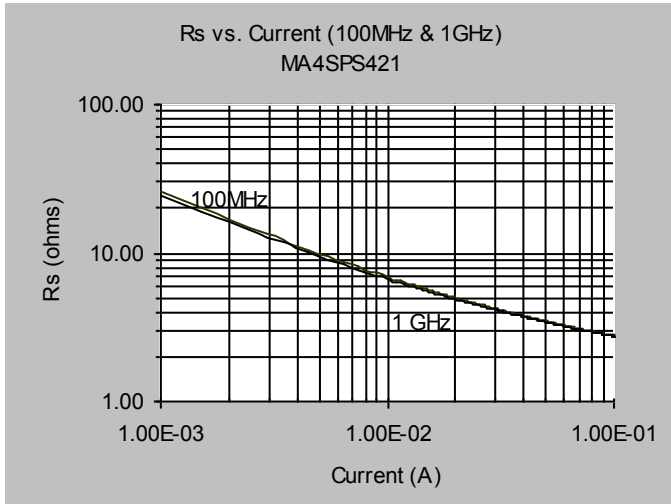
1 * Restrictions on Hazardous Substances, European Union Directive 2002/95/EC.

Electrical Specifications @ T_A = +25°C

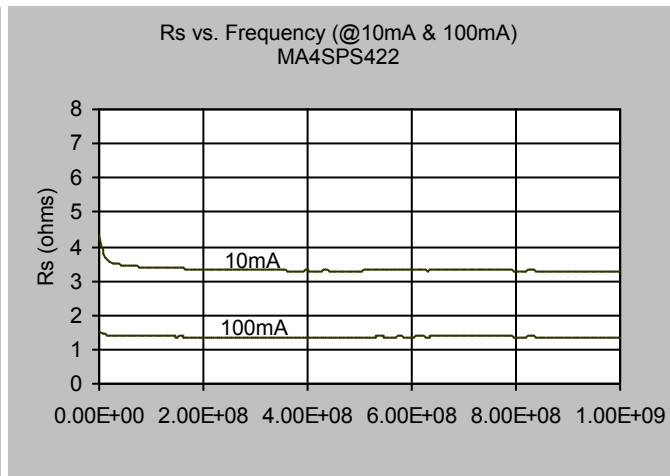
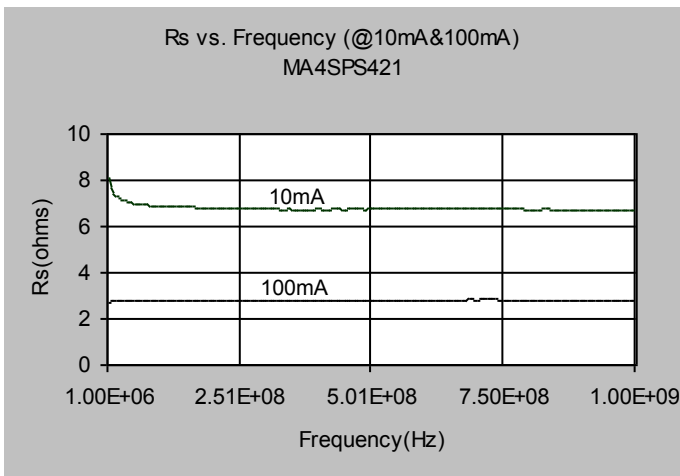
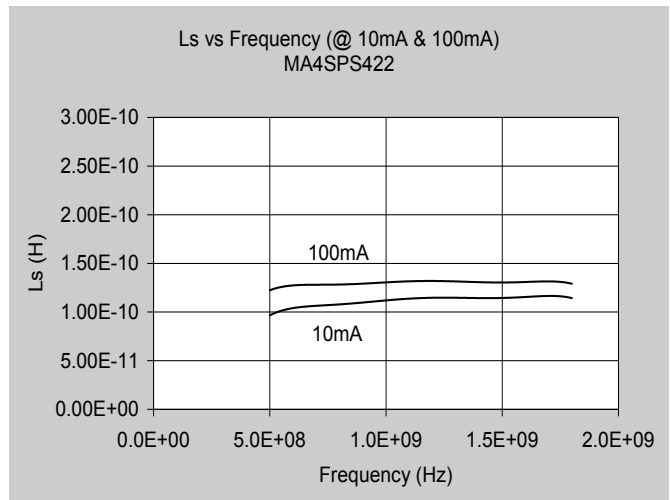
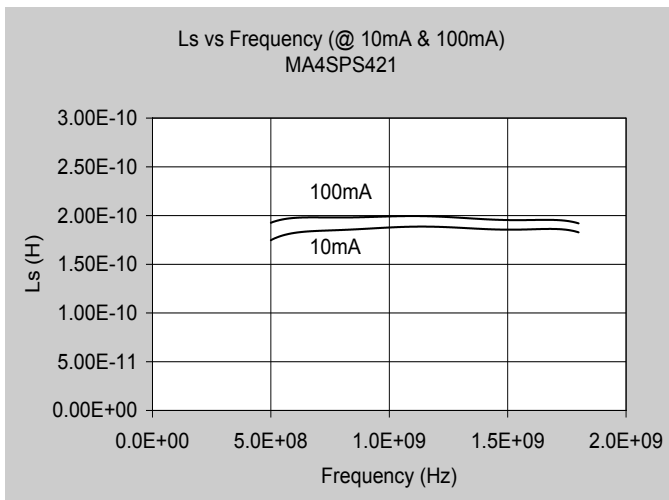
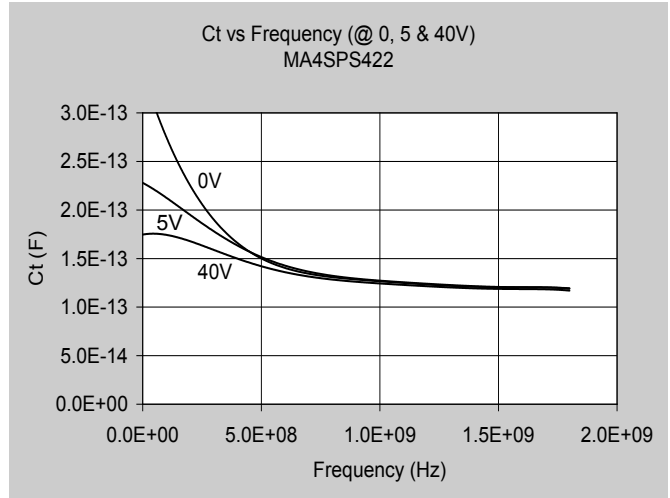
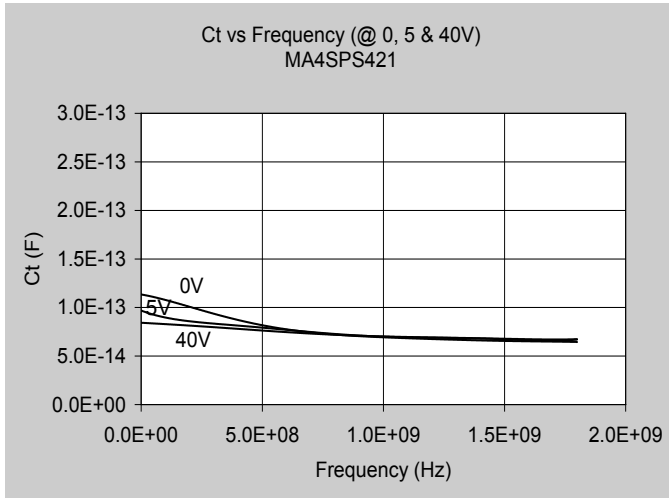
Parameter	Symbol	Conditions	Units	MA4SPS421		MA4SPS422	
				Typ.	Max.	Typ.	Max.
Capacitance	C _T	0V, 1MHz ¹	pF	0.130	0.175	0.340	0.500
Capacitance	C _T	0V, 1GHz ^{1,3}	pF	0.080		0.140	
Capacitance	C _T	-40V, 1MHz ¹	pF	0.090	0.125	0.180	0.300
Capacitance	C _T	-40V, 1GHz ^{1,3}	pF	0.070		0.130	
Resistance	R _S	+10mA, 1GHz ^{2,3}	Ω	6.200		3.100	
Forward Voltage	V _F	+10mA	V	0.900	0.950	0.840	0.900
Reverse Leakage Current	I _R	-200V	μA		-10		-10
Input Third Order Intercept Point	IIP ³	F ₁ = 1000MHz	dBm	50		50	
		F ₂ = 1010MHz					
		Input Power = +10dBm					
		I bias = +10mA					
Minority Carrier Lifetime	T _L	+10mA / -6mA	μS	5		10	
		(50% - 90% V)					
C.W. Thermal Resistance	R _{θJL}	I _H = 0.5A, I _L = 10mA ⁴	°C/W	80		70	

- Total Capacitance, C_T, is equivalent to the sum of Junction Capacitance and Parasitic Capacitance.
 $C_T = C_J$ (Junction Capacitance) + C_{PAR} (Parasitic Capacitance)
- Series resistance R_S is equivalent to the total diode resistance:
 $R_S = R_J$ (Junction Capacitance Junction Resistance) + R_O (Ohmic Resistance)
- R_S and C_T are measured on an HP4291A Impedance Analyzer with die mounted in an ODS-186 package.
- Steady-state R_{θJL} measured with die mounted in an ODS-186 package.

Typical Performance @ $T_{AMB} = +25^{\circ}\text{C}$



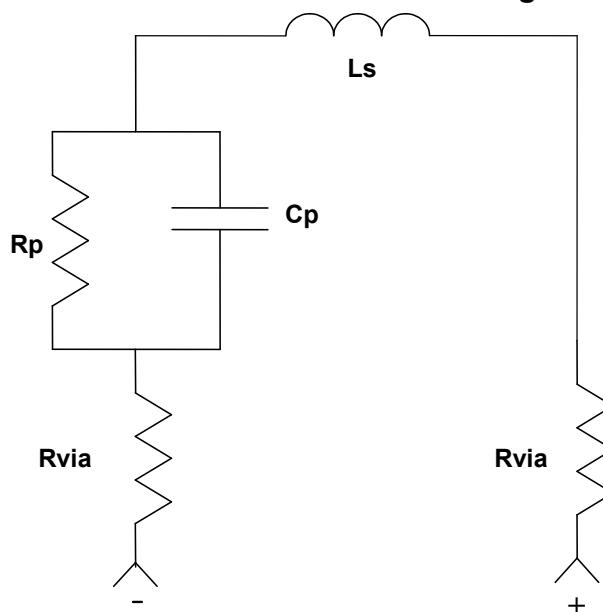
Typical Performance @ T_A = +25°C



MA4SPS421 ADS SPICE Model

PinDiodeModel	wBv=260V
NLPINM1	wPmax=1.6W
Is=3.5E-12A	Ffe=1.0
Vi=0.0V	
Un=900cm ² /V-sec	
Wi=100μm	
Rr=11KΩ	
Cmin=0.06pF	
Tau= 5μS	
Rs=0.1Ω	
Cj0=0.07pF	
Vj=0.7V	
M=0.5	
Fc=0.5	
Imax=3.1 E+8 A/m ²	
Kf=0.0	
Af=1.0	

MA4SPS421 Schematic Diagram



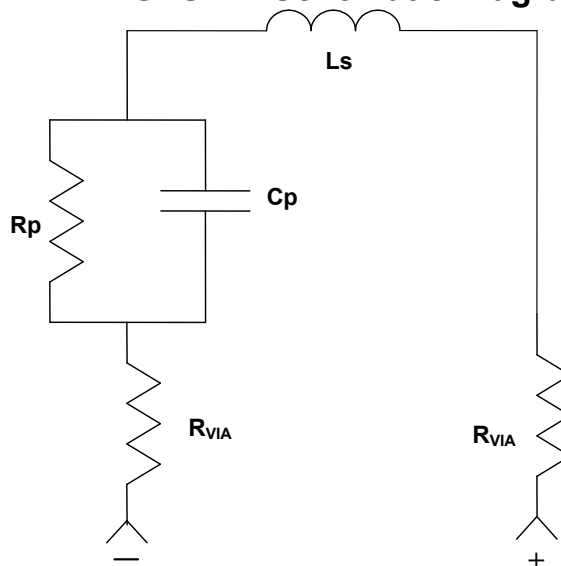
Notes $R_s = 2 * R_{via} + R_p$

MA4SPS422 ADS SPICE

```

PinDiodeModel      wBv=340V
NLPINM1            wPmax=1.8W
Is=3.5E-12A        Ffe=1.0
Vi=0.0V
Un=900cm^2/V-sec
Wi=100µm
Rr=9 KΩ
Cmin=0.12pF
Tau= 10µS
Rs=0.1Ω
Cj0=0.13pF
Vj=0.7V
M=0.5
Fc=0.5
Imax=7.8E+7 A/m^2
Kf=0.0
Af=1.0
    
```

MA4SPS422 Schematic Diagram



Notes : $R_s = 2 * R_{via} + R_p$

Handling

All semiconductor chips should be handled with care to avoid damage or contamination from perspiration and skin oils. The use of plastic tipped tweezers or vacuum pickups is strongly recommended for individual components. Bulk handling should insure that abrasion and mechanical shock are minimized.

Bonding

Attachment to a circuit board is made simple through the use of surface mount technology. Mounting pads are conveniently located on the bottom surface of these devices and are removed from the active junction locations. These devices are well suited for solder attachment onto hard and soft substrates. The use of 80/20, Au/Sn, 60/40, Sn/Pb or RoHS compliant solders is recommended. Conductive silver epoxy solder may also be used but could result in an increase in series and thermal resistance.

When soldering these devices to a hard substrate, hot gas die bonding is preferred. We recommend utilizing a vacuum tip and force of 60 to 100 grams applied normal to the top surface of the device. When soldering to soft substrates, it is recommended to use a lead-tin interface at the circuit board mounting pads. Position the die so that its mounting pads are aligned with the circuit board mounting pads and reflow the solder by heating the circuit trace near the mounting pad while applying 60 to 100 grams of force perpendicular to the top surface of the die. The solder joint must not be made one at a time, creating unequal heat flow and thermal stress. Solder reflow should not be performed by causing heat to flow through the top surface of the die. Since the HMIC glass is transparent, the edges of the mounting pads closest to each other can be visually inspected through the die after attach is completed.

Recommended temperature and re-flow profiles for 60/40, Sn/Pb and RoHS compliant solders are provided in [Application Note M538](#), "Surface Mounting Instructions". [Application Note M541](#) "Bonding and Handling Procedures for Chip Diode Devices" provides handling and assembly recommendations.

Ordering Information

The MA4SPS42X series of SURMOUNTS may be ordered in either gel packs or tape and reeled by adding the appropriate suffix per the table below. Tape and reel dimensions are provided in [Application Note M513](#) located on the M/A-COM Tech website @ www.macomtech.com.

Part Number	
Gel Pack	Tape and Reel Pocket Tape
MA4SPS421	MADP-000421-12940P
MA4SPS422	MADP-000422-12950P

M/A-COM Technology Solutions Inc. All rights reserved.

Information in this document is provided in connection with M/A-COM Technology Solutions Inc ("MACOM") products. These materials are provided by MACOM as a service to its customers and may be used for informational purposes only. Except as provided in MACOM's Terms and Conditions of Sale for such products or in any separate agreement related to this document, MACOM assumes no liability whatsoever. MACOM assumes no responsibility for errors or omissions in these materials. MACOM may make changes to specifications and product descriptions at any time, without notice. MACOM makes no commitment to update the information and shall have no responsibility whatsoever for conflicts or incompatibilities arising from future changes to its specifications and product descriptions. No license, express or implied, by estoppel or otherwise, to any intellectual property rights is granted by this document.

THESE MATERIALS ARE PROVIDED "AS IS" WITHOUT WARRANTY OF ANY KIND, EITHER EXPRESS OR IMPLIED, RELATING TO SALE AND/OR USE OF MACOM PRODUCTS INCLUDING LIABILITY OR WARRANTIES RELATING TO FITNESS FOR A PARTICULAR PURPOSE, CONSEQUENTIAL OR INCIDENTAL DAMAGES, MERCHANTABILITY, OR INFRINGEMENT OF ANY PATENT, COPYRIGHT OR OTHER INTELLECTUAL PROPERTY RIGHT. MACOM FURTHER DOES NOT WARRANT THE ACCURACY OR COMPLETENESS OF THE INFORMATION, TEXT, GRAPHICS OR OTHER ITEMS CONTAINED WITHIN THESE MATERIALS. MACOM SHALL NOT BE LIABLE FOR ANY SPECIAL, INDIRECT, INCIDENTAL, OR CONSEQUENTIAL DAMAGES, INCLUDING WITHOUT LIMITATION, LOST REVENUES OR LOST PROFITS, WHICH MAY RESULT FROM THE USE OF THESE MATERIALS.

MACOM products are not intended for use in medical, lifesaving or life sustaining applications. MACOM customers using or selling MACOM products for use in such applications do so at their own risk and agree to fully indemnify MACOM for any damages resulting from such improper use or sale.