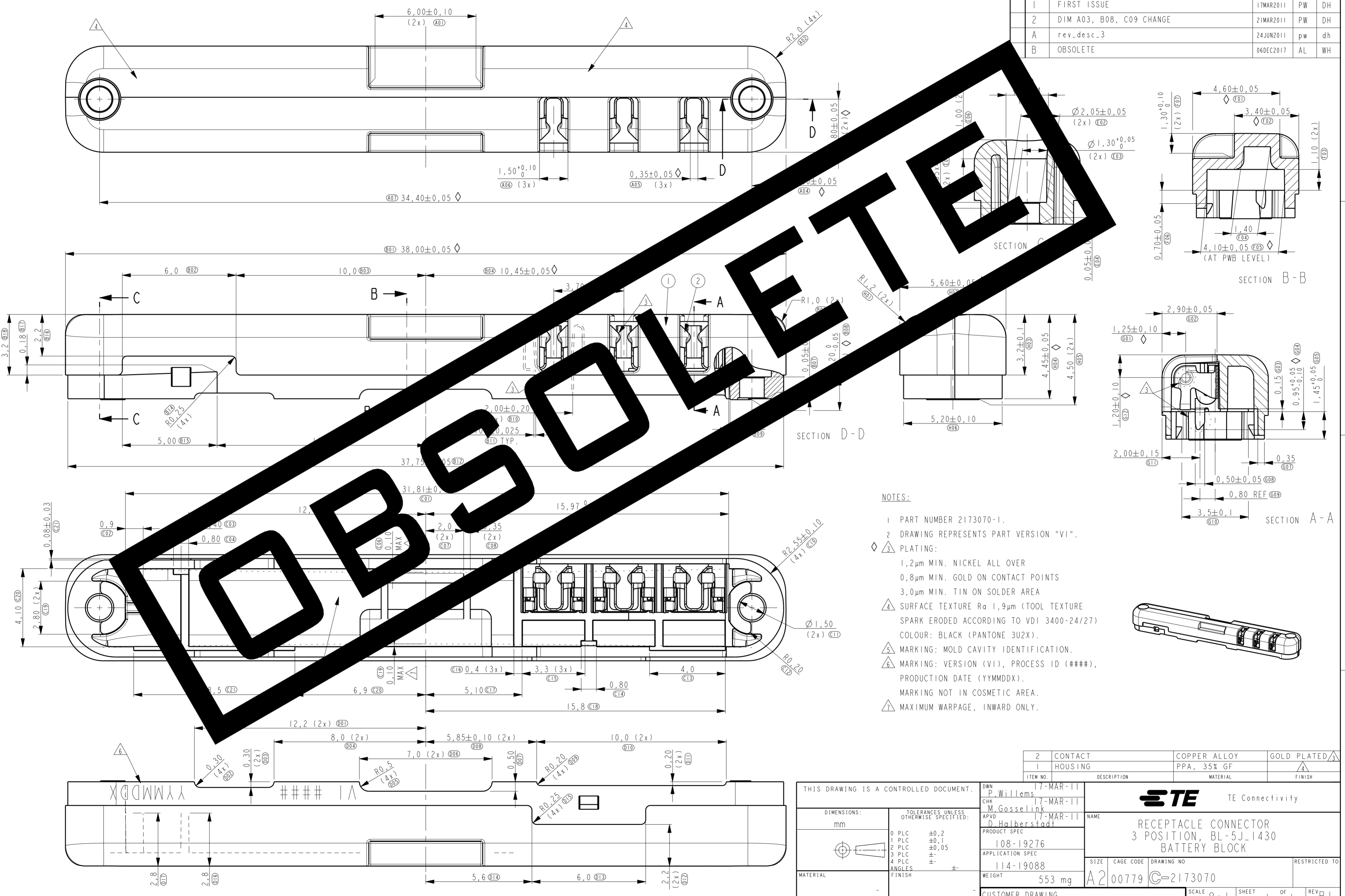


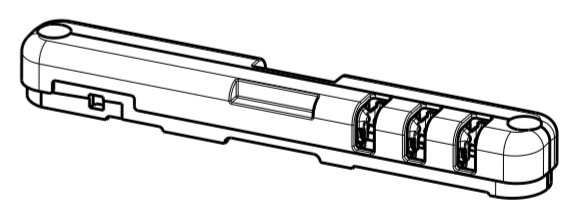
THIS DRAWING IS UNPUBLISHED. RELEASED FOR PUBLICATION  
 © COPYRIGHT BY - ALL RIGHTS RESERVED.

LOC	DIST	REVISIONS					
H	-	P	LTR	DESCRIPTION	DATE	DWN	APVD
		1		FIRST ISSUE	17MAR2011	PW	DH
		2		DIM A03, B08, C09 CHANGE	21MAR2011	PW	DH
		A		rev_desc_3	24JUN2011	pw	dh
		B		OBSOLETE	06DEC2017	AL	WH



NOTES:

- 1 PART NUMBER 2173070-1.
- 2 DRAWING REPRESENTS PART VERSION "VI".
- 3 PLATING:
  - 1,2µm MIN. NICKEL ALL OVER
  - 0,8µm MIN. GOLD ON CONTACT POINTS
  - 3,0µm MIN. TIN ON SOLDER AREA
- 4 SURFACE TEXTURE Ra 1,9µm (TOOL TEXTURE SPARK ERODED ACCORDING TO VDI 3400-24/27) COLOUR: BLACK (PANTONE 3U2X).
- 5 MARKING: MOLD CAVITY IDENTIFICATION.
- 6 MARKING: VERSION (VI), PROCESS ID (####), PRODUCTION DATE (YYMMDDX). MARKING NOT IN COSMETIC AREA.
- 7 MAXIMUM WARPAGE, INWARD ONLY.



2 CONTACT	COPPER ALLOY	GOLD PLATED
1 HOUSING	PPA, 35% GF	
ITEM NO.	DESCRIPTION	MATERIAL FINISH

THIS DRAWING IS A CONTROLLED DOCUMENT.

DIMENSIONS:	TOLERANCES UNLESS OTHERWISE SPECIFIED:
mm	
0 PLC	±0,2
1 PLC	±0,1
2 PLC	±0,05
3 PLC	±
4 PLC	±
ANGLES	±
FINISH	±

DWN	17-MAR-11	TE Connectivity			
CHK	17-MAR-11				
APVD	17-MAR-11				
PRODUCT SPEC	108-19276				
APPLICATION SPEC	114-19088	NAME			
WEIGHT	553 mg	SIZE	CAGE CODE	DRAWING NO	RESTRICTED TO
CUSTOMER DRAWING		A2	00779	C-2173070	REV B1