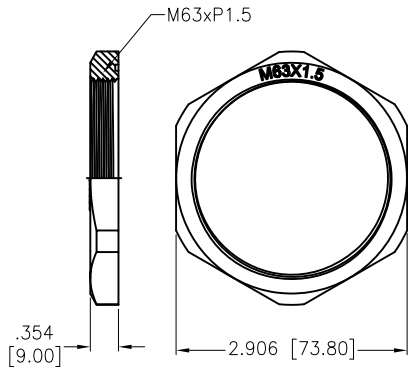


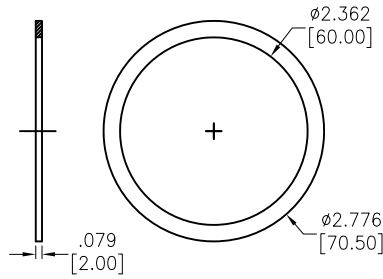
APPROVED: \_\_\_\_\_  
 DATE: \_\_\_\_\_ TITLE: \_\_\_\_\_

Rev	AWO #	Description	Date	Appr
-		RELEASED	11/1/22	
A		UPDATED SPEC.	11/30/22	JJ/RC

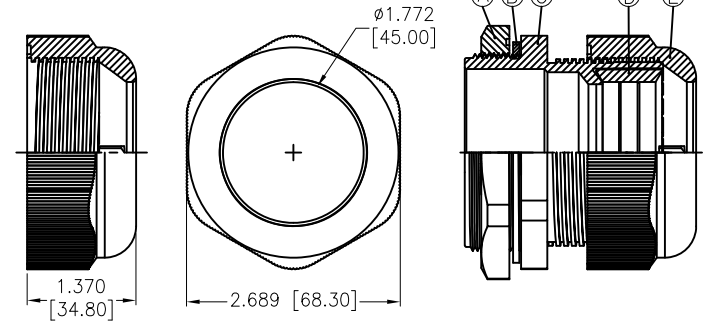
Ⓐ Lock Nut



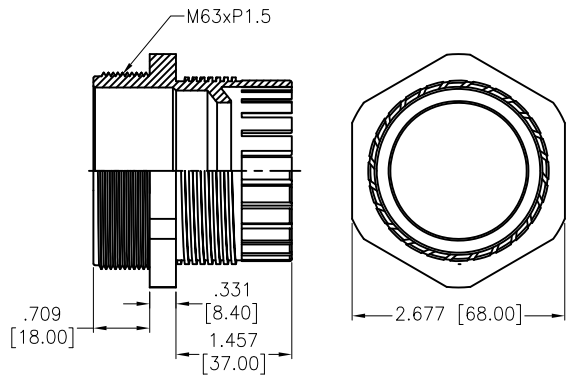
Ⓑ Washer



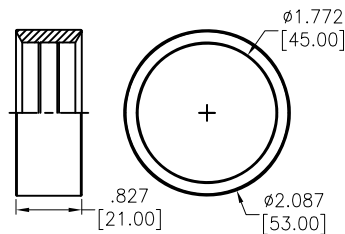
Ⓔ Sealing Nut



Ⓒ Body



Ⓓ Seal



RECOMMENDED  
 PANEL CUT-OUT  
 (.275 [7.0] MAX PANEL THICKNESS)

**SPECIFICATIONS:**

Material:  
 Lock Nut: PA66, rated UL 94V-2  
 Body: PA66, rated UL 94V-2  
 Sealing Nut: PA66, rated UL 94V-2  
 Washer: NBR  
 Seal: NBR  
 Mechanical:  
 Cable Range (O.D.): 37-44mm  
 Thread O.D. L2: 60mm  
 Thread Length L2: 18mm  
 Spanner Size A&E: 71/68mm  
 Nut Torque: 4Nm Max.  
 Environmental:  
 Waterproof: IP68  
 Lead free, RoHS compliant.



UNLESS OTHERWISE SPECIFIED ALL DIMENSIONS ARE INCHES [MM]. TOLERANCES: EXCEPT AS NOTED		
INCHES	HOLES	
.X ± .10	ØX	± .10
.XX ± .020	ØXX	± .015
.XXX ± .015	ØXXX	± .010
DRAWN	WX	11/1/22
CHECKED	RC	11/1/22
APPROVED		
THIS DRAWING CONTAINS INFORMATION THAT IS PROPRIETARY AND SHOULD NOT BE USED WITHOUT PRIOR WRITTEN PERMISSION FROM ADAM TECH		

<b>ADAM TECH</b>		909 Rahway Avenue, Union, NJ 07083 Phone: 908-687-5000 Fax: 908-687-5710	
TITLE: WATERPROOF CONNECTOR, M63, 1 HOLE, CABLE GLAND, WATERPROOF: IP68			
SIZE: X	PART NO.: CG-P-M63-1.5	REV.: A	
REF: S00211C	SCALE: NTS	SHEET 1 OF 1	