

THIS DRAWING IS UNPUBLISHED.

RELEASED FOR PUBLICATION

ALL RIGHTS RESERVED.

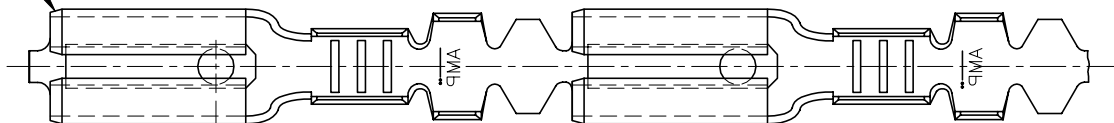
© COPYRIGHT - By -

REVISIONS

P	LTR	DESCRIPTION	DATE	DWN	APVD
	H	REVISED PER ECR-21-100133	10FEB2021	BDA	DH

- 1 SPLICE FREE, FOR AMP_D_MATOR.
- 2 BRIGHT PRE_TIN PLATED.
- 3 REELED WITH PAPER LAYER.
- 4 OBSOLETE PARTS: OBSOLETE CIS STREAMLINING PER D.RENAUD/D.SINISI
- 5 OBSOLETE.

CHAMFER



5.3
[.210]

2.2
[.086]

0.3
[.010]

6.3
[.250]

1.02 [.045] REF

0.5
[.020]
MAX

0.5
[.020]
MAX

14.0
[.550]

3.7
[.146]

0.8
[.032]

4	NONE	PHOSPH. BRONZE	3	6-160303-5
	TIN	BRASS	3	6-160303-4
4	2	PHOSPH. BRONZE		6-160303-3
	TIN-LEAD	PHOSPH. BRONZE		6-160303-2
4	TIN-LEAD	BRASS		6-160303-1
4	PRE-TIN	PHOSPH. BRONZE		6-160303-0
	PRE-TIN	BRASS		5-160303-9
4	TIN	BRASS	1	5-160303-8
	NONE	BRASS	1	5-160303-7
5	TIN	PHOSPH. BRONZE		5-160303-6
4	NONE	PHOSPH. BRONZE		5-160303-5
4	GOLD	BRASS		5-160303-4
	SILVER	BRASS		5-160303-3
	TIN	BRASS		5-160303-2
	NONE	BRASS		5-160303-1
	PLATING	MATERIAL		PART NUMBER

THIS DRAWING IS A CONTROLLED DOCUMENT. DWN 6-3-1978

DIMENSIONS: mm [INCHES] TOLERANCES UNLESS OTHERWISE SPECIFIED:

0 PLC	± -
1 PLC	± -
2 PLC	± -
3 PLC	± -
4 PLC	± -
4 ANGLES	± -

APVD 7-3-1978

PRODUCT SPEC

APPLICATION SPEC

WEIGHT

CUSTOMER DRAWING

TE Connectivity

.110 SRS FASTON RECEPTACLE FOR 0.8mm TAB

SIZE A3 CAGE CODE 00779 C=160303

SCALE 6:1 SHEET 1 OF 1 REV H

WIRE RANGE :	INSUL-RANGE :
0.3-0.56mm ² (22-20 AWG)	∅ 1.3-2.0mm (.050-.080)