

6

5

4

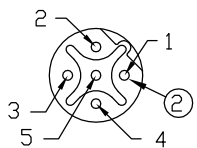
3

2

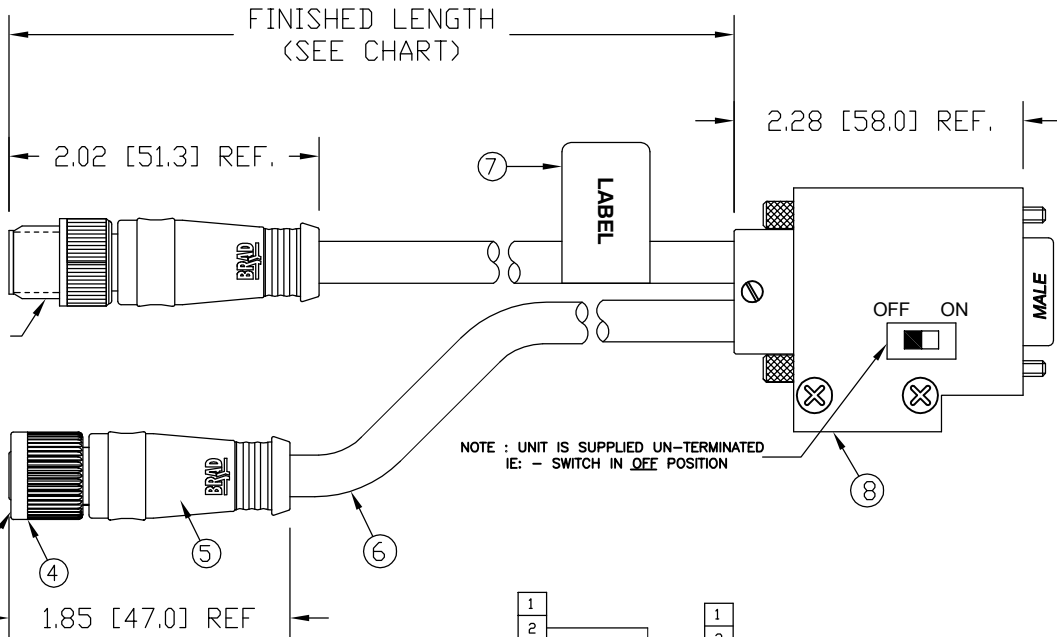
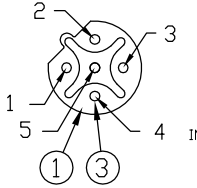
1

MATERIAL NUMBER	ENGINEERING NUMBER	FINISHED LENGTH
1200980048	BM5G70PP4M010	1.0M +55.6mm -0 [3.28' +2.19" -0]
1200980180	BM5G70PP4M050	5.0M +165.1mm -0 [16.40' +6.50" -0]

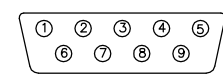
MICRO-CHANGE MALE FACE VIEW



MICRO-CHANGE FEMALE FACE VIEW

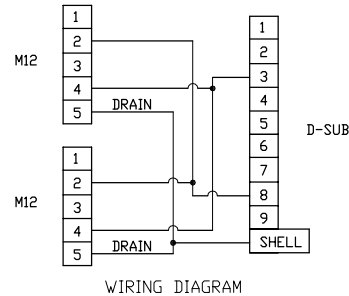


9 WAY D-SUB MALE FACE VIEW



PINS 1, 2, 4, 5, 7, & 9 ARE NOT CONNECTED ON D-SUB

NOTE : UNIT IS SUPPLIED UN-TERMINATED IE: - SWITCH IN OFF POSITION



VOLTAGE RATING	250 VAC/VDC
AMPERAGE RATING	4 AMPS
PROTECTION FOR M12 CONNECTOR	IP67
PROTECTION FOR D-SUB	IP40
OPERATING TEMPERATURE - M12 HEAD	-20°C TO 80°C
OPERATING TEMPERATURE - D-SUB	0°C TO 60°C

ITEM	COMPONENT	MATERIAL	FINISH
1	M12 INSERT	NYLON	BLACK
2	CONTACT PIN	COPPER ALLOY	GOLD OVER NICKEL
3	CONTACT SOCKET	COPPER ALLOY	GOLD OVER NICKEL
4	COUPLING NUT	BRASS	NICKEL PLATED
5	OVERMOLD	PUR	YELLOW
6	CABLE- 22 AWG, COPPER STRANDING TWISTED PAIR, SHIELD WITH BRAID	PUR	PURPLE
7	LABEL	MLYAR	BLACK/YELLOW
8	D-SUB	ABS	BLACK

RELEASED DRAWING
 EC NO: WEL2010-0081
 DRWN: LHARTMAN 8/27/09
 CHKD: BWOODMAN 09/08/27
 APPR: JFMURPHY 2009/08/28

QUALITY SYMBOLS
 ▽=0
 ▽/ =0

GENERAL TOLERANCES (UNLESS SPECIFIED)

	mm	INCH
4 PLACES	±----	±----
3 PLACES	±----	±----
2 PLACES	±---	±.01
1 PLACE	±0.3	±----

ANGULAR ±---°

DRAFT WHERE APPLICABLE MUST REMAIN WITHIN DIMENSIONS

DIMENSION STYLE IN/MM

SCALE NTS

DESIGN UNITS INCH

THIRD ANGLE PROJECTION

DRAWN BY DATE
 LHARTMAN 2009/08/27

CHECKED BY DATE
 BWOODMAN 2009/08/27

APPROVED BY DATE
 JFMURPHY 2009/08/27

MATERIAL NO.

SEE TABLE

SIZE A

TITLE
 MICRO-CHANGE PROFIBUS 5P MA/FE REV KEY - D-SUB #22/2 SHLD PURPLE PUR

MOLEX INCORPORATED

DOCUMENT NO. SD-120098-017

SHEET NO. 1 OF 1

THIS DRAWING CONTAINS INFORMATION THAT IS PROPRIETARY TO MOLEX INCORPORATED AND SHOULD NOT BE USED WITHOUT WRITTEN PERMISSION

6

5

4

3

2

1

E

E

D

D

C

C

B

B

A

A