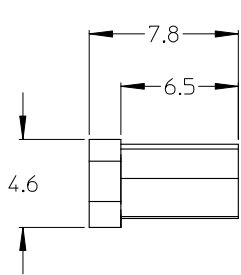
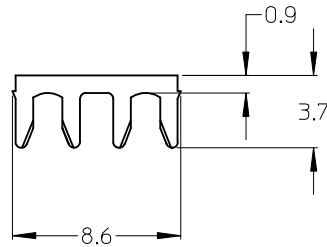


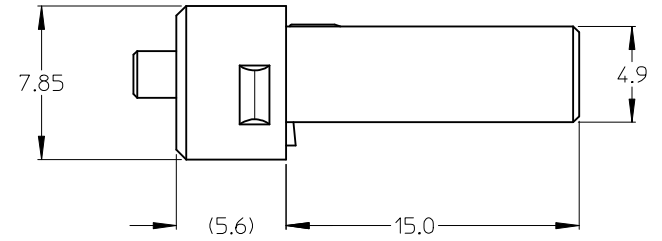
10	9
P/N	STOPPER-MATERIAL
106108-6004	SS 304
106108-6012	BeCu C17200



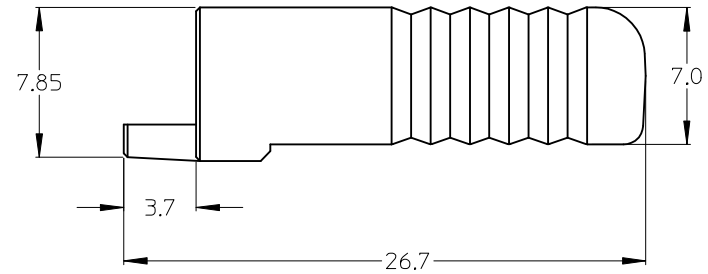
NEW SMI PLG CAP (2X)



NEW SMI CONNECTOR FIBER STOPPER



NEW SMI CONNECTOR PLUG HOUSING



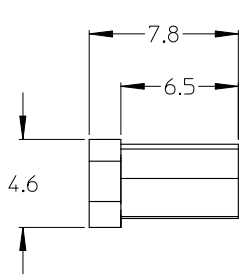
NEW SMI CONNECTOR COVER HOUSING

NOTES:

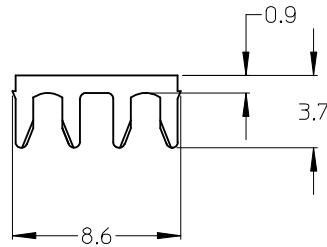
1. ALL DIMENSIONS ARE FOR REFERENCE ONLY.
2. CONNECTOR SHALL BE BULK PACKED IN QUANTITY OF 50.

ENTER DESCRIPTION EC NO: MF2014-0622 DRWN: SBOJANIC 2014/04/06 CHKD: APPR: IGUMIN 2014/04/11 REV:	QUALITY SYMBOLS ▽=0 ▽=0	GENERAL TOLERANCES (UNLESS SPECIFIED)		DIMENSION STYLE MM ONLY		SCALE	DESIGN UNITS INCH	THIRD ANGLE PROJECTION	
		4 PLACES ± --- ± --- 3 PLACES ± --- ± --- 2 PLACES ± --- ± --- 1 PLACE ± --- ± ---	mm INCH	DRAWN BY JSZEWCK	DATE 2007/04/19	TITLE SMI LONG BODY CONNECTOR KIT (BULK PACK)			
		ANGULAR ±1/2°		CHECKED BY	DATE	APPROVED BY I. GUMIN 2007/04/19			
		DRAFT WHERE APPLICABLE MUST REMAIN WITHIN DIMENSIONS		MATERIAL NO. SEE TABLE		MOLEX INCORPORATED		DOCUMENT NO. SD-106108-6004	SHEET NO. 1 OF 01

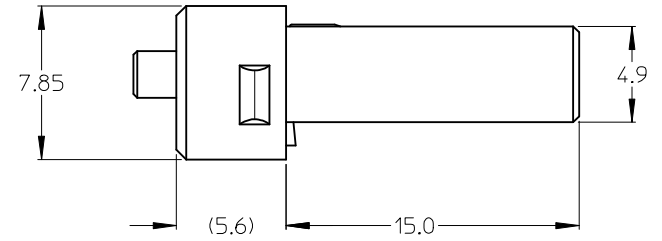
10	9
P/N	STOPPER-MATERIAL
106108-6004	SS 304
106108-6012	BeCu C17200



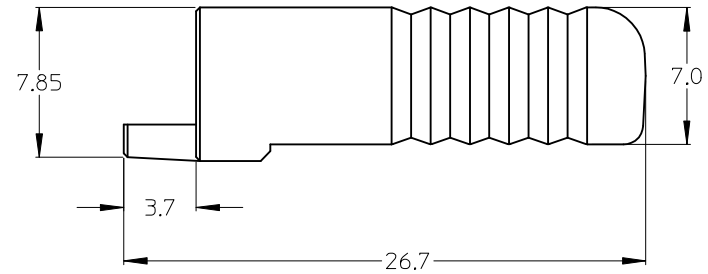
NEW SMI PLG CAP (2X)



NEW SMI CONNECTOR FIBER STOPPER



NEW SMI CONNECTOR PLUG HOUSING



NEW SMI CONNECTOR COVER HOUSING

NOTES:

1. ALL DIMENSIONS ARE FOR REFERENCE ONLY.
2. CONNECTOR SHALL BE BULK PACKED IN QUANTITY OF 50.

ENTER DESCRIPTION EC NO: MF2014-0622 DRWN: SBOJANIC 2014/04/06 CHKD: APPR: IGUMIN 2014/04/11 D1	QUALITY SYMBOLS ▽=0 ▽=0	GENERAL TOLERANCES (UNLESS SPECIFIED)		DIMENSION STYLE MM ONLY		SCALE	DESIGN UNITS INCH	THIRD ANGLE PROJECTION	
		4 PLACES ± --- ± --- 3 PLACES ± --- ± --- 2 PLACES ± --- ± --- 1 PLACE ± --- ± ---	mm INCH	DRAWN BY JSZEWCK	DATE 2007/04/19	TITLE SMI LONG BODY CONNECTOR KIT (BULK PACK)			
		ANGULAR ±1/2°		CHECKED BY	DATE	MOLEX INCORPORATED			
		DRAFT WHERE APPLICABLE MUST REMAIN WITHIN DIMENSIONS		APPROVED BY I. GUMIN	DATE 2007/04/19	MATERIAL NO. SEE TABLE	DOCUMENT NO. SD-106108-6004	SHEET NO. 1 OF 01	THIS DRAWING CONTAINS INFORMATION THAT IS PROPRIETARY TO MOLEX INCORPORATED AND SHOULD NOT BE USED WITHOUT WRITTEN PERMISSION