

DO NOT SCALE DRAWING DIMENSION IN METRIC

8

EDP NO. 35-130-0001

ENG. NO 35130-0001

SIMILAR ITEM

PROJECT NO.

PROJECT NO.

PROJECT NO.

PROJECT NO.

7

6

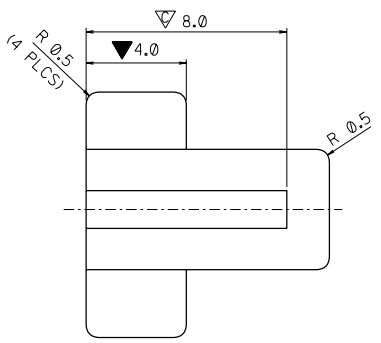
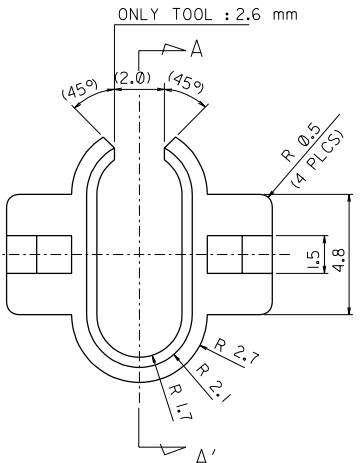
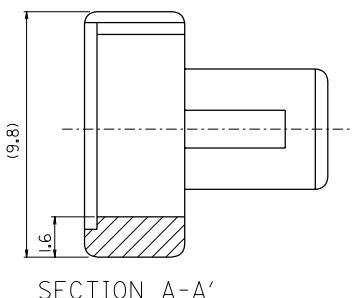
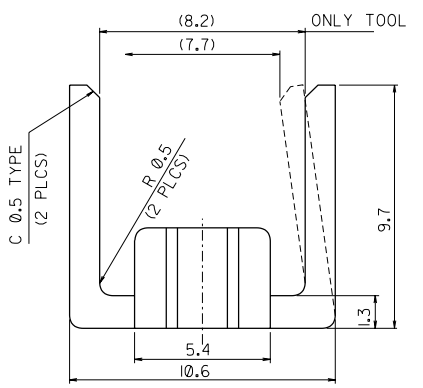
5

4

3

2

1



NOTE
 1. MATERIAL : UNFILLED POLYESTER UL94-V0 IMPACT RESISTANT GP 2150-8133.
 2. COLOR : BLACK..
 3. UNLESS OTHERWISE SPECIFIED ALL CORNERS MAY HAVE A 0.13 RADIUS OR FILLET.
 4. ENGRAVING TO BE 1.0 LETTER SIZE CHARACTERS RAISED 0.13.
 5. FLISH AND BURR TO BE 0.2mm.
 6. **▽** MEANS CRITICAL DIMENSION AND SHOULD BE CONTROLLED WITHIN 65% OF GIVEN TOLERANCES.
 7. **▽** MEANS MAJOR DIMENSION.

ASS'Y PART		QTY/REEL OR PACK	SURFACE AREA	MATERIAL	WIRE RANGE	GENERAL TOLERANCES	MOLEX-KOREA CO.,LTD.
DESCRIPTION	ENG.NO.	—	— MM ²	LUPOX GP 2150 (PBT)	AWG: —	DIM. : ±0.2 ANGLE : ±0.2°	
FEMALE HSG	E 35130-0201	DIE NO. 35130	LAYOUT NO. —	DIMENSION CLASSIFICATION ■ : CRITICAL □ : MINOR ☒ : MAJOR () : REFERENCE		REVISE ONLY ON CAD SYSTEM	
A	NEW RELEASED	WIRE CRIMP WIDTH	INS. CRIMP WIDTH	DRAWN BY C.Y.CHO	CHK'D BY	TITLE: TPA FOR 2CKTS HORN CONN.	
LTR	REVISION RECORD	WBDW	IBDW	APP'D BY	SCALE CAD 5:1	INSULATION RANGE — ENG.NO. E 35130-0001 REV A	
ECN	DR. DATE	DIE FEED	APPL FEED			DR. 91.12.26 CHK.	