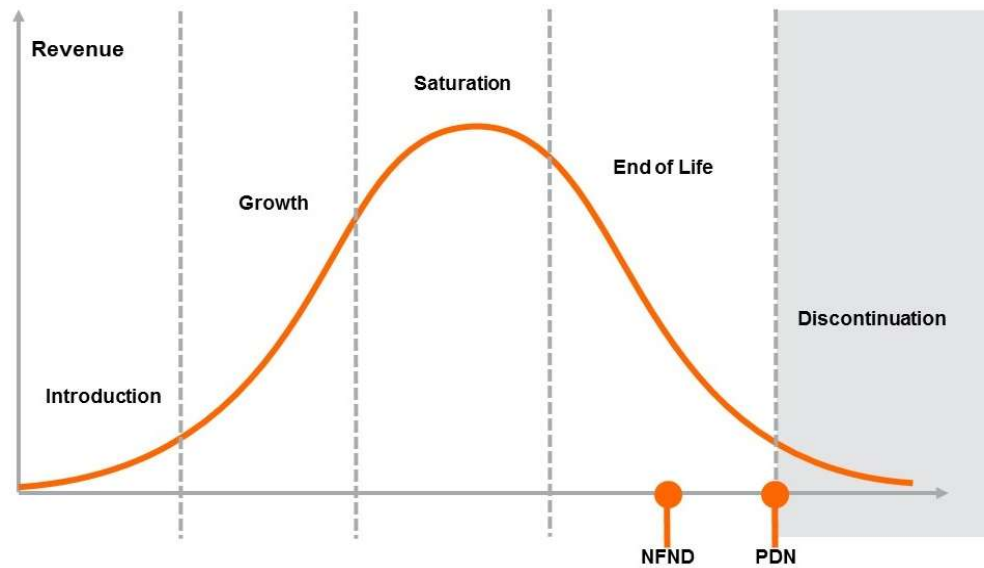


Light is OSRAM

Product Or Individual Q-Code Discontinuation (acc. JEDEC J-STD-048)
OS-PDN-2021-029

01 April 2021

| | |
|----------------|---------------|
| Last order: | 02 April 2021 |
| Last delivery: | 31 May 2021 |



Please direct your feedback to your local Sales office.

| DISCONTINUED | | | | NEW (REPLACEMENT) | | |
|-----------------------------------|---------------|-------|-------------------------------|-------------------|-------------------------|----------------|
| Device | Ordering Code | Brand | Reason for discontinuation | Device | Datasheet Ordering Code | Brand |
| GW TBLZH2.EM-JA8-2200-1-40-T06 | Q65112A9076 | DURIS | Discontuniation of MMP Device | | | No replacement |
| GW TBLZH3.EM-JA9-2200-1-20-T06 | Q65112A9077 | DURIS | Discontuniation of MMP Device | | | No replacement |
| GWM TBLZH4.EM-LA6-2240-GB-T01-IT | Q65113A0167 | DURIS | Discontuniation of MMP Device | | | No replacement |
| GWM TBLZH4.EM-PA1-2765-GA-T01-IT | Q65113A0168 | DURIS | Discontuniation of MMP Device | | | No replacement |
| GWM TBLZH5.EM-JA7-2200-GC-T01-IT | Q65113A0314 | DURIS | Discontuniation of MMP Device | | | No replacement |
| GBM JTLPSA.13-0809-B5B7-1-150-R18 | Q65113A0477 | DURIS | Discontuniation of MMP Device | | | No replacement |
| GRM JTLPSA.23-1620-R3R5-1-150-R18 | Q65113A0478 | DURIS | Discontuniation of MMP Device | | | No replacement |
| GTM JTLPSA.13-5565-G5G7-1-150-R18 | Q65113A0479 | DURIS | Discontuniation of MMP Device | | | No replacement |
| GWM T4DWF1.EM-FC1-2710-1-T02-IT | Q65113A0695 | DURIS | Discontuniation of MMP Device | | | No replacement |
| GWM T4DWF1.EM-FC2-4940-1-T01-IT | Q65113A0696 | DURIS | Discontuniation of MMP Device | | | No replacement |
| GWM T4DWF1.EM-FC2-4940-1-T02-IT | Q65113A0697 | DURIS | Discontuniation of MMP Device | | | No replacement |
| GWM T6D2F1.EM-LA8-5000-1-T01-IT | Q65113A0698 | DURIS | Discontuniation of MMP Device | | | No replacement |
| GWM T6D2F1.EM-LA8-5000-1-T02-IT | Q65113A0699 | DURIS | Discontuniation of MMP Device | | | No replacement |
| GWM T6D2F1.EM-LA7-2700-1-T01-IT | Q65113A0700 | DURIS | Discontuniation of MMP Device | | | No replacement |
| GWM T6D2F1.EM-LA7-2700-1-T02-IT | Q65113A0701 | DURIS | Discontuniation of MMP Device | | | No replacement |
| GWM T6D2F1.EM-LA7-3000-1-T01-IT | Q65113A0702 | DURIS | Discontuniation of MMP Device | | | No replacement |
| GWM T6D2F1.EM-LA7-3000-1-T02-IT | Q65113A0703 | DURIS | Discontuniation of MMP Device | | | No replacement |
| GWM T6D2F1.EM-LA9-4000-1-T02-IT | Q65113A0704 | DURIS | Discontuniation of MMP Device | | | No replacement |
| GWM T6D2F1.EM-LA9-4000-1-T01-IT | Q65113A0705 | DURIS | Discontuniation of MMP Device | | | No replacement |
| GWM T4DWF1.EM-FC1-2710-1-T01-IT | Q65113A0706 | DURIS | Discontuniation of MMP Device | | | No replacement |
| GWM T4DSF1.EM-CA6-5700-1-T02 | Q65113A0869 | DURIS | Discontuniation of MMP Device | | | No replacement |

| DISCONTINUED | | | | NEW (REPLACEMENT) | | |
|--|---------------|-------|-------------------------------|-------------------|-------------------------|----------------|
| Device | Ordering Code | Brand | Reason for discontinuation | Device | Datasheet Ordering Code | Brand |
| GWM T4DSF1.EM-CA6-5700-1-T01 | Q65113A0870 | DURIS | Discontuniation of MMP Device | | | No replacement |
| GWM T4DSF1.EM-CA5-2850-1-T02 | Q65113A0871 | DURIS | Discontuniation of MMP Device | | | No replacement |
| GWM T4DSF1.EM-CA5-2850-1-T01 | Q65113A0872 | DURIS | Discontuniation of MMP Device | | | No replacement |
| GWM T4DTF1.EM-CA9-5350-1-T01-LDS | Q65113A0927 | DURIS | Discontuniation of MMP Device | | | No replacement |
| GWM T4DTF1.EM-CA5-5000-1-T01-LDS | Q65113A0928 | DURIS | Discontuniation of MMP Device | | | No replacement |
| GWM T4DTF1.EM-CA7-2700-1-T01-LDS | Q65113A0929 | DURIS | Discontuniation of MMP Device | | | No replacement |
| GWM T4DTF1.EM-CA8-2800-1-T01-LDS | Q65113A0930 | DURIS | Discontuniation of MMP Device | | | No replacement |
| GWM T6D4F1.EM-PA4-3000-1-T01-LDS | Q65113A1077 | DURIS | Discontuniation of MMP Device | | | No replacement |
| GWM T6D4F1.EM-PA6-5000-1-T01-LDS | Q65113A1078 | DURIS | Discontuniation of MMP Device | | | No replacement |
| GWM T6D4F1.EM-PA5-4150-1-T01-LDS | Q65113A1079 | DURIS | Discontuniation of MMP Device | | | No replacement |
| GWM T6D4F1.EM-PA3-2800-1-T01-LDS | Q65113A1080 | DURIS | Discontuniation of MMP Device | | | No replacement |
| GWM T5DWF1.EM-FC7-27S5-1-T01-LDS | Q65113A1347 | DURIS | Discontuniation of MMP Device | | | No replacement |
| GWM T5DWF1.EM-FC7-27S5-1-T02-LDS | Q65113A1348 | DURIS | Discontuniation of MMP Device | | | No replacement |
| GWM T5DWF1.EM-FC5-28S5-1-T01-LDS | Q65113A1349 | DURIS | Discontuniation of MMP Device | | | No replacement |
| GWM T5DWF1.EM-FC5-28S5-1-T02-LDS | Q65113A1350 | DURIS | Discontuniation of MMP Device | | | No replacement |
| GWM T5DWF1.EM-FC9-3150S5-1-T01-LDS | Q65113A1351 | DURIS | Discontuniation of MMP Device | | | No replacement |
| GWM T5DWF1.EM-FC9-3150S5-1-T02-LDS | Q65113A1352 | DURIS | Discontuniation of MMP Device | | | No replacement |
| GWM T5DWF1.EM-FC8-4150S5-1-T01-LDS | Q65113A1353 | DURIS | Discontuniation of MMP Device | | | No replacement |
| GWM T5DWF1.EM-FC8-4150S5-1-T02-LDS | Q65113A1354 | DURIS | Discontuniation of MMP Device | | | No replacement |
| GWM P9L1SA.EM-L1-22R5+K1-65R5-1-12.5-R33 | Q65113A1471 | DURIS | Discontuniation of MMP Device | | | No replacement |
| GWM P9L9SA.EM-L1-22R5+K1-65R5-1-17-R33 | Q65113A1472 | DURIS | Discontuniation of MMP Device | | | No replacement |
| GWM P9L6SA.EM-L2-22R5+K1K3-65R5-1-50-R33 | Q65113A1473 | DURIS | Discontuniation of MMP Device | | | No replacement |