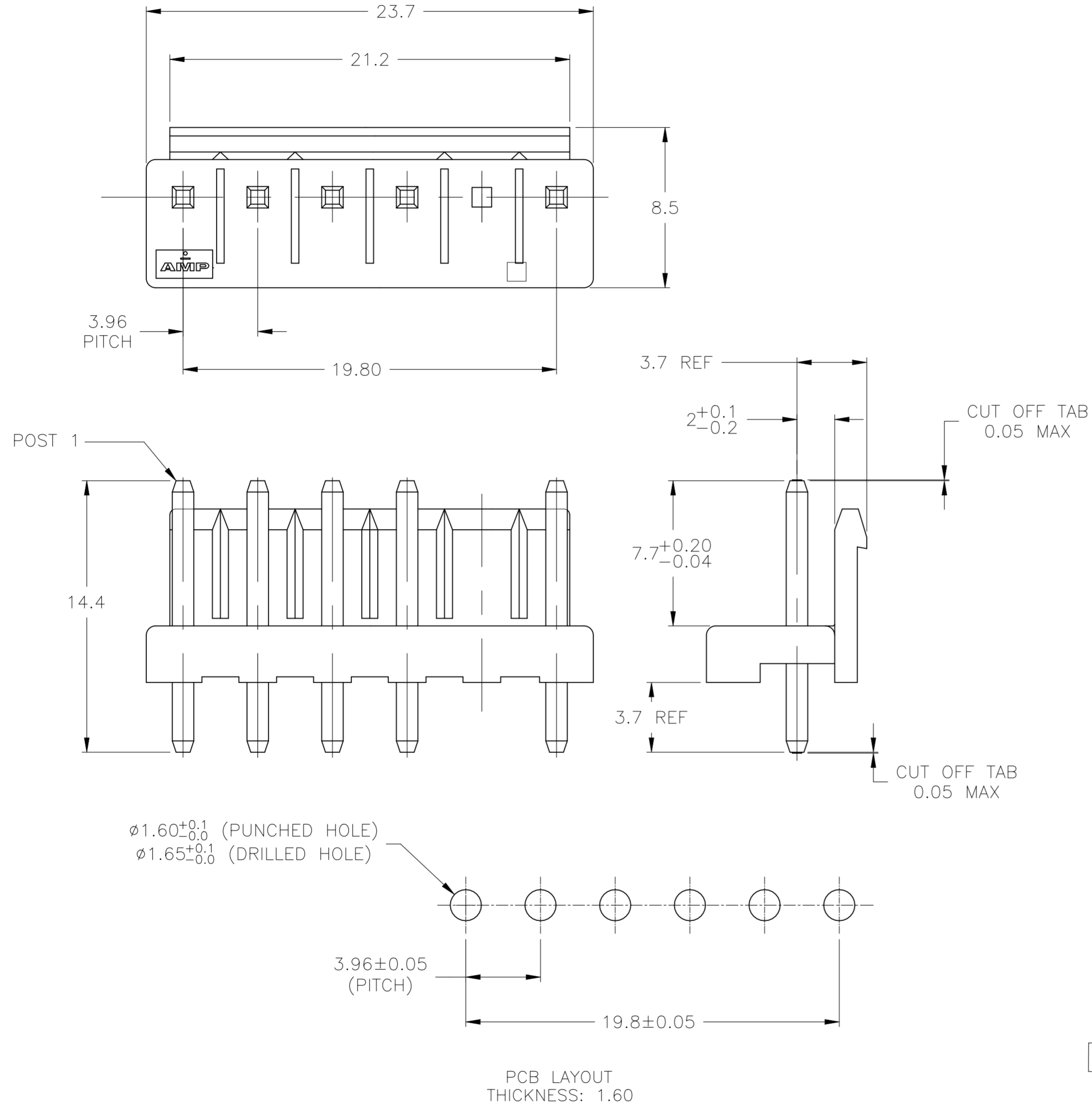


REVISIONS					
P	LTR	DESCRIPTION	DATE	DWN	APVD
C3		REVISED PER ECR-21-124255	21JAN2022	SS	DZ



1 MATERIAL: HOUSING- PBT, NATURAL
 POST- BRASS, 1MICROMETER MIN TIN OVER
 0.8 MICROMETER MIN NICKEL.

2. RECOMMENDED MATING PART: *-1123722-*

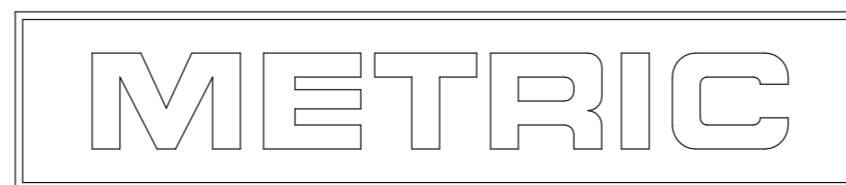
3 O : WITH PIN,
 X : WITHOUT PIN.

PIN POSITION	COLOR	NO. OF POSITIONS	ASSEMBLY PART NO.
0 0 0 0 0 0	GREEN	6	6-1744106-7
0 0 X 0 X 0	BLACK	6	5-1744106-2
0 X 0 0 0 0	RED	6	4-1744106-4
0 0 X 0 X 0	RED	6	4-1744106-2
0 0 0 0 0 0	BLUE	6	3-1744106-7
0 0 X 0 X 0	BLUE	6	3-1744106-2
0 0 0 0 0 0	YELLOW	6	2-1744106-7
0 0 X 0 X 0	YELLOW	6	2-1744106-2
0 0 X 0 X 0	NATURAL	6	1-1744106-2
X 0 X 0 X 0	NATURAL	6	1-1744106-1
0 0 0 0 X 0	BLACK	6	5-1744106-8
0 0 0 0 0 0	BLACK	6	5-1744106-7
0 0 0 0 0 0	NATURAL	6	1-1744106-7
0 X 0 X 0 0 0	NATURAL	6	1744106-6
0 0 X 0 0 0 0	NATURAL	6	1744106-5
0 X 0 0 0 0 0	NATURAL	6	1744106-4
0 X 0 0 X 0 0	NATURAL	6	1744106-3
0 0 0 X 0 0	NATURAL	6	1744106-2
0 0 0 0 X 0	NATURAL	6	1744106-1
1 2 3 4 5 6	COLOR	NO. OF POSITIONS	ASSEMBLY PART NO.

OBSOLETE

3

1744106-1 SHOWN



THIS DRAWING IS A CONTROLLED DOCUMENT.

DWN K. WHITAKER 04JUN04	TE Connectivity
CHK D. BOSSI 04JUN04	
APVD D. BOSSI 04JUN04	NAME
PRODUCT SPEC 108-5609	HEADER ASSEMBLY, SPECIAL, OMITTED POST, 6 POSITION, ECONOMY POWER (EP)
APPLICATION SPEC	SIZE A2
MATERIAL 1	CAGE CODE 00779
FINISH 1	DRAWING NO C=1744106
	WEIGHT 0.000000
	SCALE N/A
	SHEET 1 OF 1
	REV C3