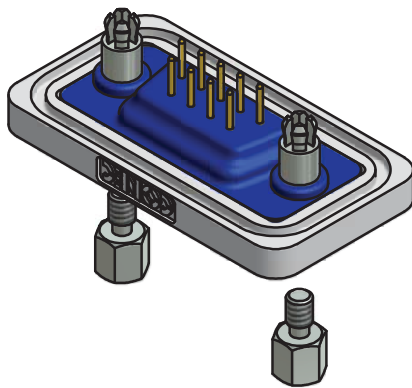
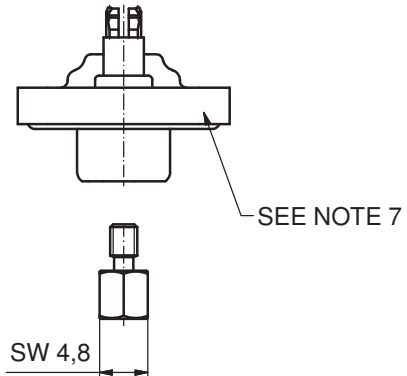
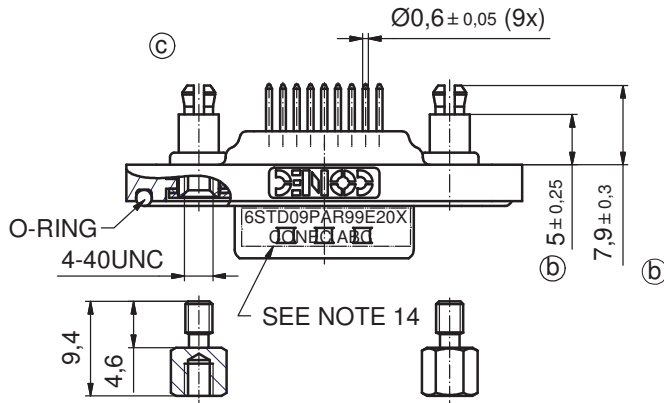
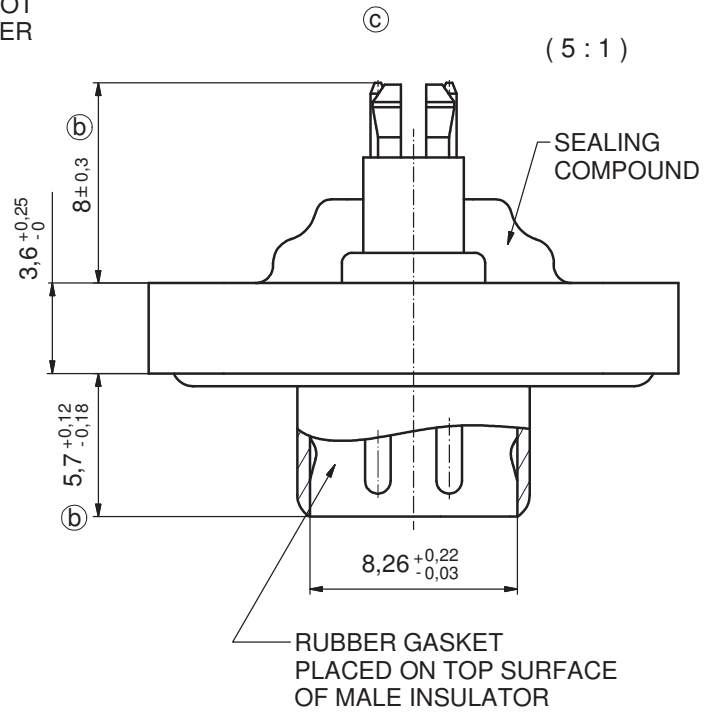
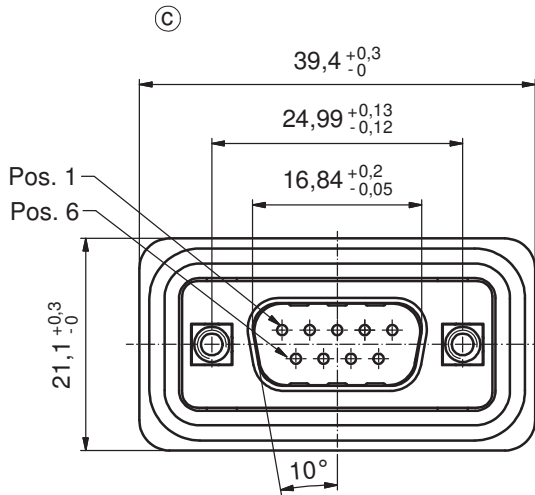


AT ALL TIMES WATER RESISTANT CONNECTORS NOT IN USE SHOULD BE COVERED WITH A CONEC WATER RESISTANT CAP OR WATER TIGHT HOOD.

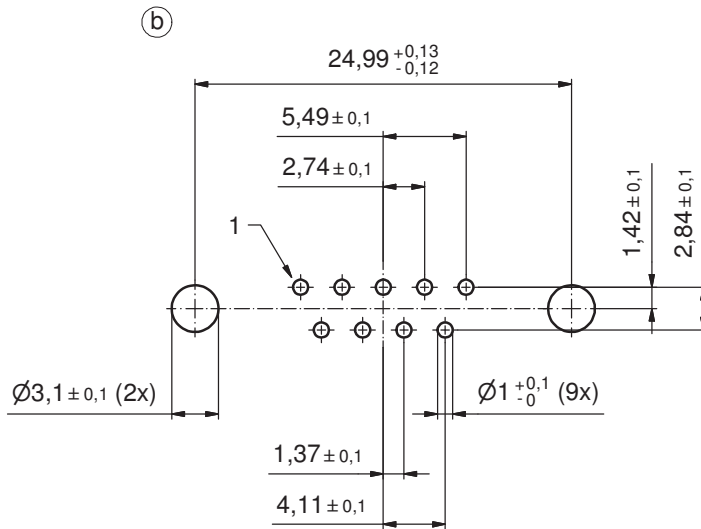


NOTES:

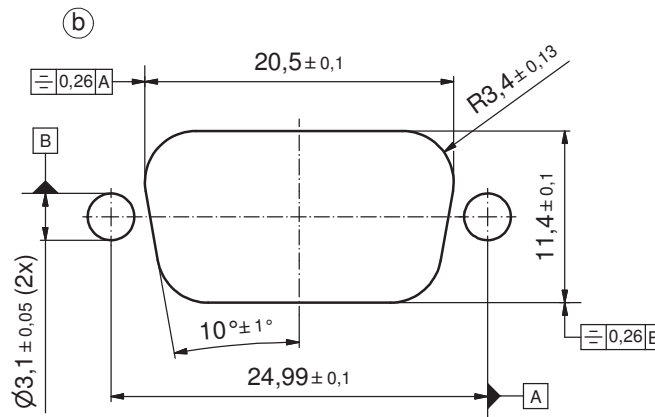
1. FOR WAVESOLDERING (SOLDER BATH TEMPERATURE 240°C FOR 5 SEC. AND SOLDER PREHEAT 120°C FOR 120 SEC.)
2. METALSHELLS: COPPER ALLOY; min. 315µm TIN over 40-80µm NICKEL
3. INSULATORS: PBT GF UL 94 V-0; BLACK
4. CONTACTS: COPPER ALLOY
PLATING: GOLD FLASH over NICKEL
5. THREADED SPACER CLIPS: COPPER ALLOY; min. 200µm TIN over 80µm NICKEL
PCB-HOLE: $\varnothing 3,1 \pm 0,1$; PCB THICKNESS 1,6mm
6. COLLARS: COPPER ALLOY; min. 200µm TIN over 80µm NICKEL
7. FRAME: ZINC DIE CAST; NICKEL PLATED
8. O-RING: SILICON; BLUE
9. RUBBER GASKET: TPE; BLACK
10. SEALING COMPOUND: PUR; BLUE
11. HEXLOCKING SCREWS: STAINLESS STEEL
12. P.C.B. HOLE DRILLINGS + RECOMMENDED PANEL CUT-OUT ON SHEET 2
13. RECOMMENDED TORQUE FOR MOUNTING SCREW 35Ncm (3.1 in.LB) / max. 40Ncm (3.5 in.LB)
14. CONNECTOR IS PART MARKED: 6STD09PAR99E20X CONEC ABC

Directive 2002/95/EC RoHS compliant

THIS DRAWING MAY NOT BE COPIED OR REPRODUCED IN ANY WAY, AND MAY NOT BE PASSED ON TO A THIRD PARTY WITHOUT WRITTEN PERMISSION. OWNERSHIP AND COPYRIGHT OF CONEC GmbH DO NOT ALTER CAD DRAWING BY HAND		tolerance		scale: 2:1 (5:1)	
		dim. in mm		material: SEE NOTES	
		date	name		title: D-SUB MALE 9pos. SOLDER PIN STRAIGHT with threaded spacer clip and hexlocking screw
		drawn 04.04.04	Lehmenkühler		
		appd. 04.02.04	Mickenbecker		
		norm	DIN 41652		dwg no:
5 x c	A3963	11.04.2011	K.H.	d-old	18K2A245
5 x b	A1983	31.03.2004	Mkf.		
a	Original				DIN-A3
rev.	description	date	name		sh: 1/8
CONEC					part no: 6STD09PAR99E20X

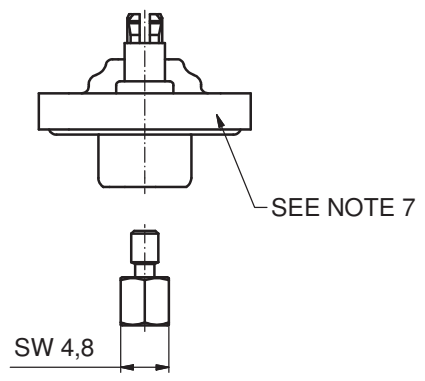
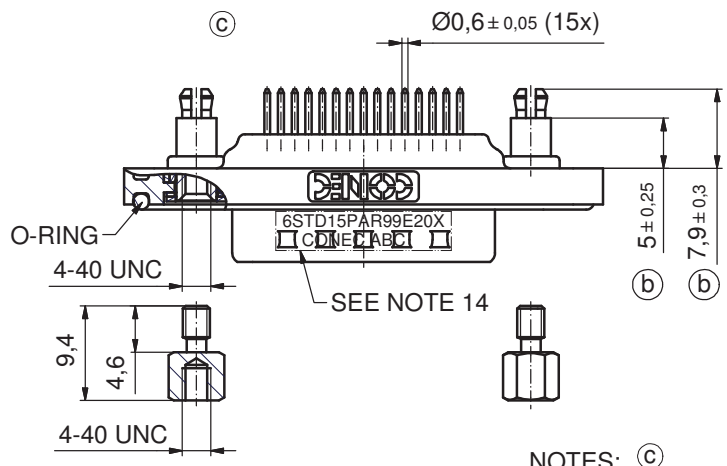
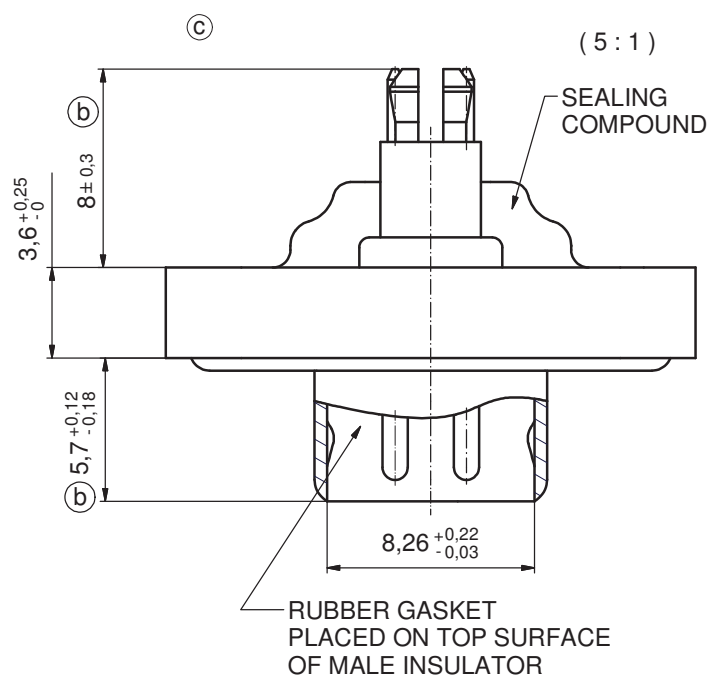
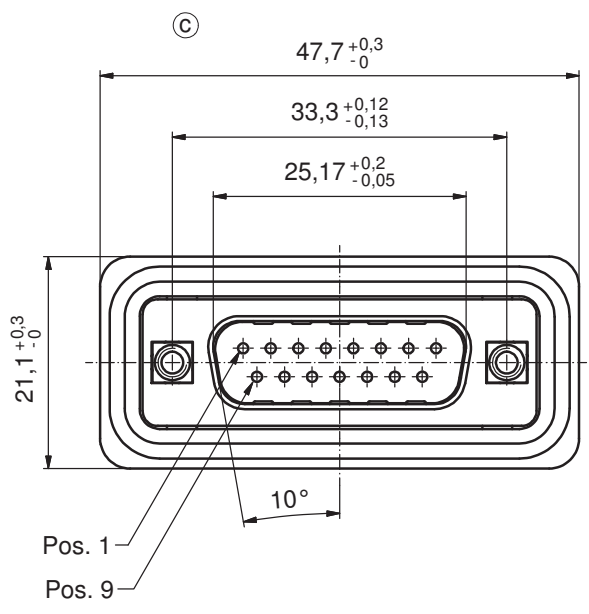


P.C.B. HOLE DRILLINGS
(P.C.B. TOP SIDE)



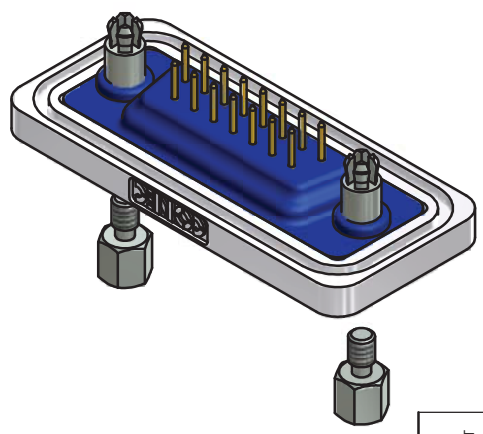
RECOMMENDED PANEL CUT-OUT

THIS DRAWING MAY NOT BE COPIED OR REPRODUCED IN ANY WAY, AND MAY NOT BE PASSED ON TO A THIRD PARTY WITHOUT WRITTEN PERMISSION. OWNERSHIP AND COPYRIGHT OF CONEC GmbH DO NOT ALTER CAD DRAWING BY HAND	3 x b		Ä3963	11.04.2011	K.H.	tolerance dim. in mm	scale: 3:1 material: SEE SHEET 1		
	a	Original					drawn 04.02.04 Lehmenkühler appd. 04.02.04 Mickenbecker	title: P.C.B. HOLE DRILLINGS RECOMMENDED PANEL CUT-OUT D-SUB MALE 9pos. Solder pin straight	
	rev.	description	date	name		norm	dwg no: 18K2A245		DIN-A3 sh: 2/8
						d-old	part no: SEE SHEET 1		
									(b)



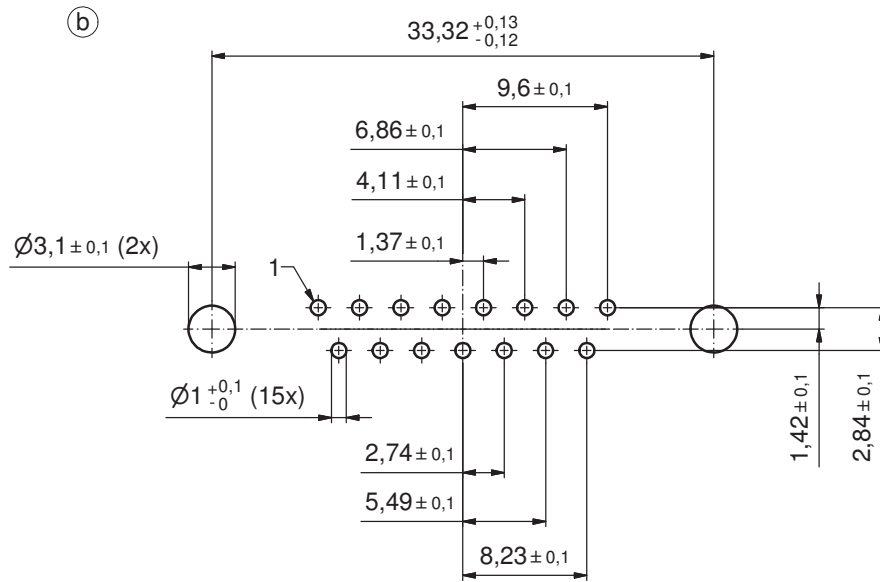
NOTES: (c)

1. FOR WAVESOLDERING (SOLDER BATH TEMPERATURE 240°C FOR 5 SEC. AND SOLDER PREHEAT 120°C FOR 120 SEC.)
2. METALSHELLS: COPPER ALLOY; min. 315µm TIN over 40-80µm NICKEL
3. INSULATORS: PBT GF UL 94 V-0; BLACK
4. CONTACTS: COPPER ALLOY
PLATING: GOLD FLASH over NICKEL
5. THREADED SPACER CLIPS: COPPER ALLOY; min. 200µm TIN over 80µm NICKEL
PCB-HOLE: ø3,1±0,1; PCB THICKNESS 1,6mm
6. COLLARS: COPPER ALLOY; min. 200µm TIN over 80µm NICKEL
7. FRAME: ZINC DIE CAST; NICKEL PLATED
8. O-RING: SILICON; BLUE
9. RUBBER GASKET: TPE; BLACK
10. SEALING COMPOUND: PUR; BLUE
11. HEXLOCKING SCREWS: STAINLESS STEEL
12. P.C.B. HOLE DRILLINGS + RECOMMENDED PANEL CUT-OUT ON SHEET 2
13. RECOMMENDED TORQUE FOR MOUNTING SCREW 35Ncm (3.1 in.LB) / max. 40Ncm (3.5 in.LB)
14. CONNECTOR IS PART MARKED: 6STD15PAR99E20X CONEC ABC (b)

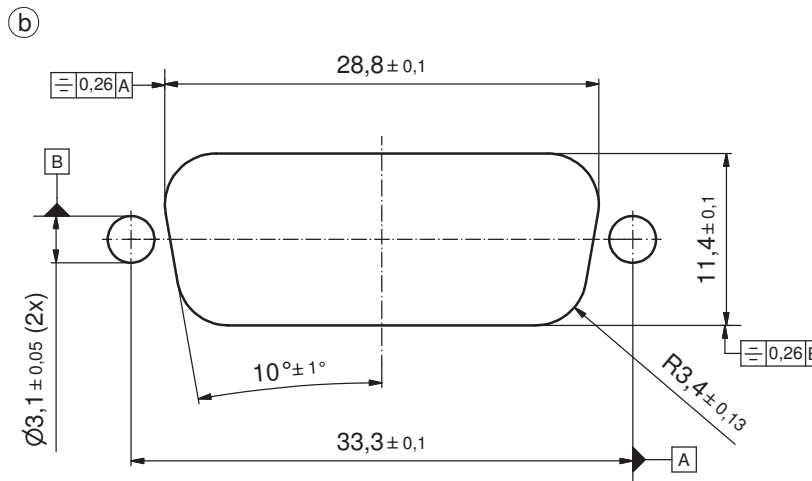


Directive 2002/95/EC RoHS compliant

THIS DRAWING MAY NOT BE COPIED OR REPRODUCED IN ANY WAY, AND MAY NOT BE PASSED ON TO A THIRD PARTY WITHOUT WRITTEN PERMISSION. OWNERSHIP AND COPYRIGHT OF CONEC GmbH DO NOT ALTER CAD DRAWING BY HAND				tolerance		scale: 2:1 (5:1)	
				dim. in mm		material: SEE NOTES	
				date	name		title: D-SUB MALE 15pos. SOLDER PIN STRAIGHT with threaded spacer clip and hexlocking screw
				drawn	04.02.04	Lehmenkühler	
				appd.	04.02.04	Mickenbecker	
				norm	DIN 41652		dwg no:
5 x c	A3963	11.04.2011	K.H.	d-old			DIN-A3
5 x b	A1983	31.03.2004	Mkf.				18K2A245
a	Original			CONEC ®		sh: 3/8	
rev.	description	date	name			part no: 6STD15PAR99E20X	



P.C.B. HOLE DRILLINGS
(P.C.B. TOP SIDE)



RECOMMENDED PANEL CUT-OUT

THIS DRAWING MAY NOT BE COPIED OR REPRODUCED IN ANY WAY, AND MAY NOT BE PASSED ON TO A THIRD PARTY WITHOUT WRITTEN PERMISSION. OWNERSHIP AND COPYRIGHT OF CONEC GmbH DO NOT ALTER CAD DRAWING BY HAND				tolerance		scale: 3:1		
				dim. in mm		material: SEE SHEET 3		
				drawn	04.02.04	Lehmenkühler	title: P.C.B. HOLE DRILLINGS RECOMMENDED PANEL CUT-OUT D-SUB Male 15pos. Solder pin straight	
				appd.	04.02.04	Mickenbecker		
norm	DIN 41652							
3 x b	Ä3963	11.04.2011	K.H.	dwg no:	DIN-A3			
a	Original			18K2A245		(b)	sh: 4/8	
rev.	description	date	name	part no: SEE SHEET 3				

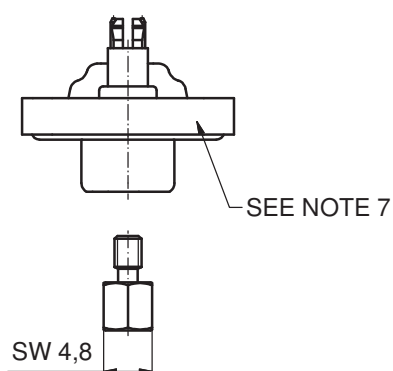
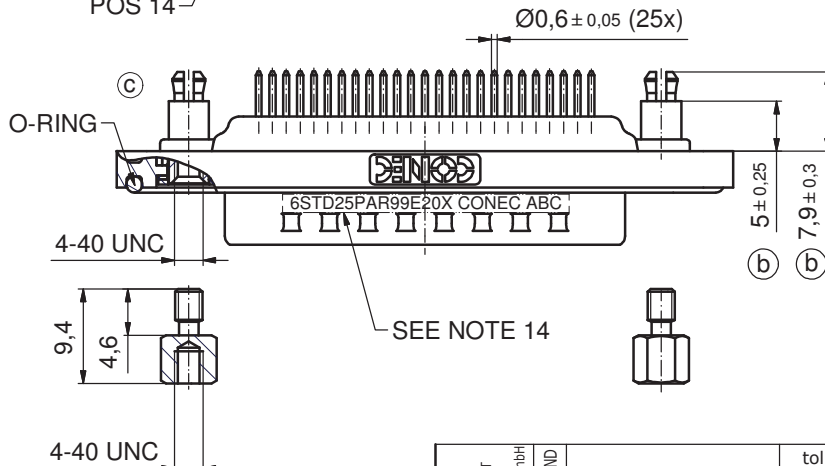
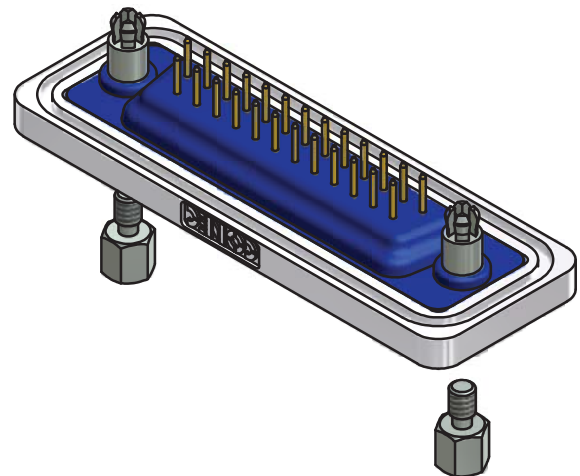
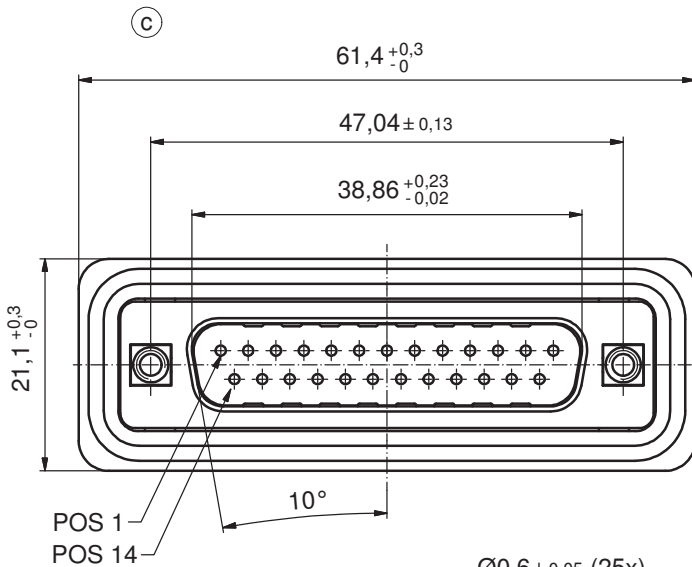
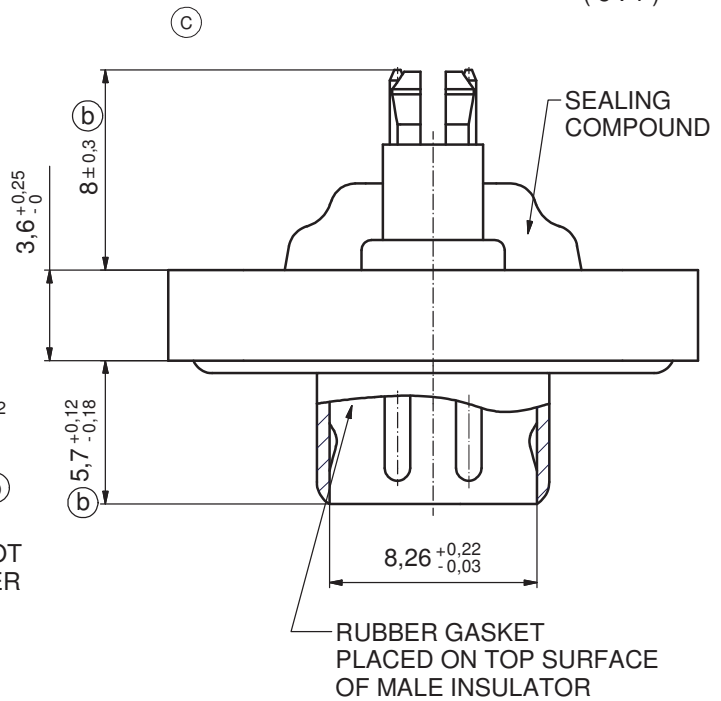


NOTES: (C)

- FOR WAVESOLDERING (SOLDER BATH TEMPERATURE 240°C FOR 5 SEC. AND SOLDER PREHEAT 120°C FOR 120 SEC.)
- METALSHELLS: COPPER ALLOY; min. 315µin TIN over 40-80µin NICKEL
- INSULATORS: PBT GF UL 94 V-0; BLACK
- CONTACTS: COPPER ALLOY
PLATING: GOLD FLASH over NICKEL
- THREADED SPACER CLIPS: COPPER ALLOY;
min. 200µin TIN over 80µin NICKEL
PCB-HOLE: $\phi 3,1 \pm 0,1$; PCB THICKNESS 1,6mm
- COLLARS: COPPER ALLOY; min. 200µin TIN over 80µin NICKEL
- FRAME: ZINC DIE CAST; NICKEL PLATED
- O-RING: SILICON; BLUE
- RUBBER GASKET: TPE; BLACK
- SEALING COMPOUND: PUR; BLUE
- HEXLOCKING SCREWS: STAINLESS STEEL
- P.C.B. HOLE DRILLINGS + RECOMMENDED PANEL CUT-OUT ON SHEET 2
- RECOMMENDED TORQUE FOR MOUNTING SCREW 35Ncm (3.1 in.LB) / max. 40Ncm (3.5 in.LB)
- CONNECTOR IS PART MARKED: 6STD25PAR99E20X CONEC ABC (b)

AT ALL TIMES WATER RESISTANT CONNECTORS NOT IN USE SHOULD BE COVERED WITH A CONEC WATER RESISTANT CAP OR WATER TIGHT HOOD.

(5:1)

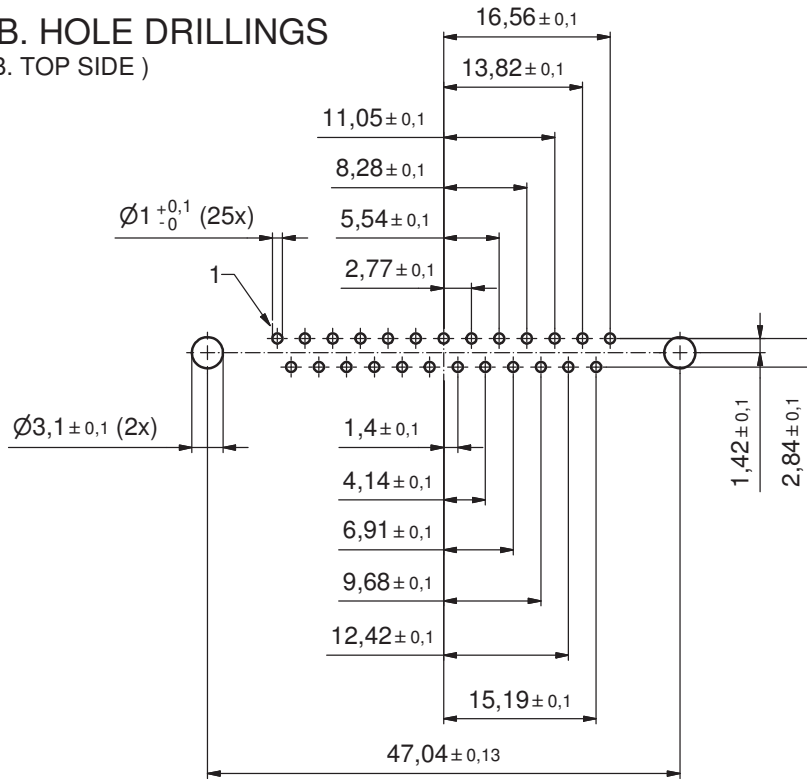


Directive 2002/95/EC RoHS compliant

THIS DRAWING MAY NOT BE COPIED OR REPRODUCED IN ANY WAY, AND MAY NOT BE PASSED ON TO A THIRD PARTY WITHOUT WRITTEN PERMISSION. OWNERSHIP AND COPYRIGHT OF CONEC GmbH DO NOT ALTER CAD DRAWING BY HAND				tolerance		scale: 2:1 (5:1)	
				dim. in mm		material: SEE NOTES	
				date	name		title: D-SUB MALE 25pos. SOLDER PIN STRAIGHT with threaded spacer clip and hexlocking screw
				drawn	04.02.04	Lehmenkühler	
				appd.	04.02.04	Mickenbecker	
				norm	DIN 41652		dwg no:
5 x c	A3963	11.04.2011	K.H.	d-old			DIN-A3
5 x b	A1983	31.03.2004	Mkf.				(C) sh: 5/8
a	Original			CONEC		18K2A245	
rev.	description	date	name			part no: 6STD25PAR99E20X	

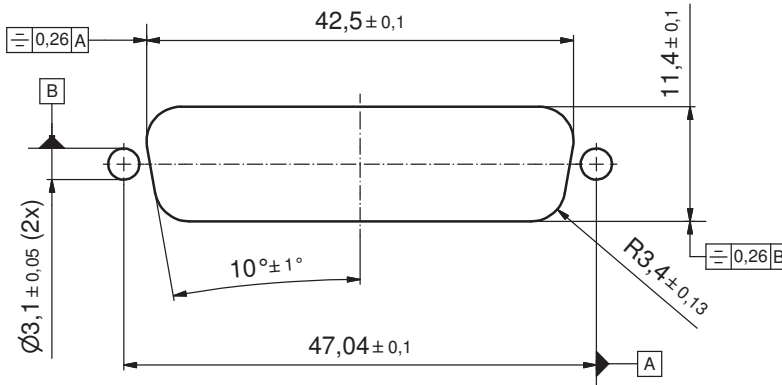
P.C.B. HOLE DRILLINGS
(P.C.B. TOP SIDE)

(b)



RECOMMENDED PANEL CUT-OUT

(b)

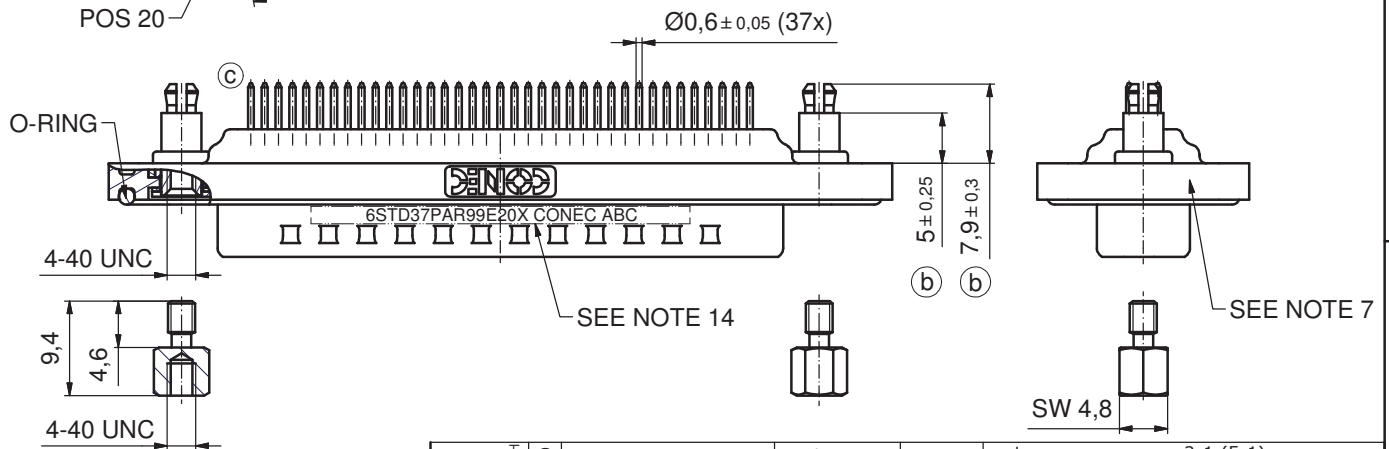
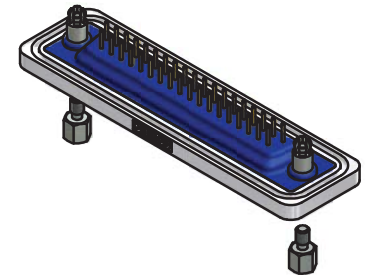
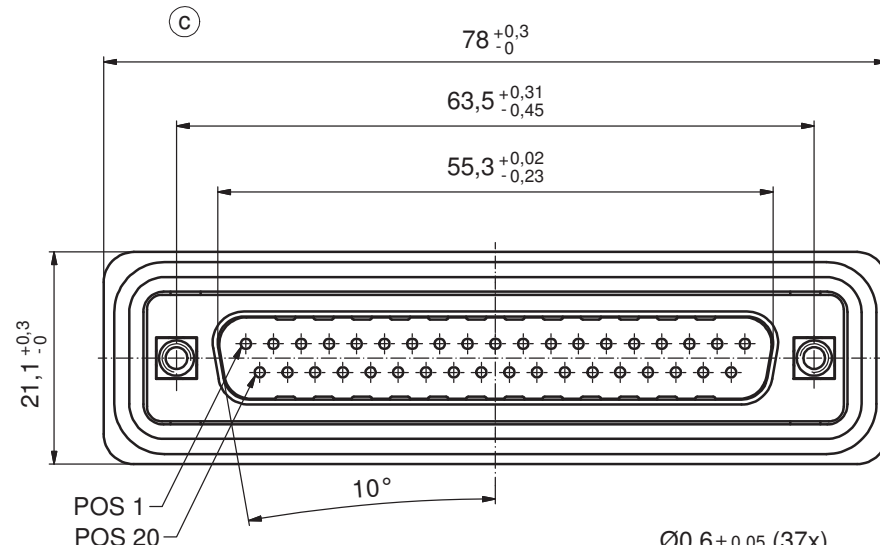
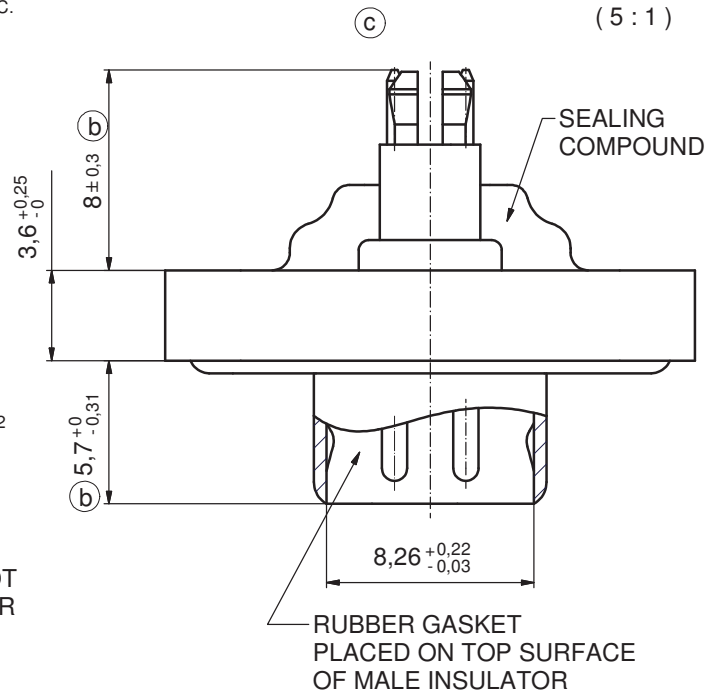


THIS DRAWING MAY NOT BE COPIED OR REPRODUCED IN ANY WAY, AND MAY NOT BE PASSED ON TO A THIRD PARTY WITHOUT WRITTEN PERMISSION. OWNERSHIP AND COPYRIGHT OF CONEC GmbH DO NOT ALTER CAD DRAWING BY HAND	tolerance		dim. in mm		scale: 2:1
	date		name		material: SEE SHEET 5
	drawn	04.02.04	Lehmenkühler		title: P.C.B. HOLE DRILLINGS RECOMMENDED PANEL CUT-OUT D-SUB MALE 25pos. SOLDER PIN STRAIGHT
	appd.	04.02.04	Mickenbecker		
	norm				
d-old				dwg no:	
3 x b	Ä3963	11.04.2011	K.H.		DIN-A3
a	Original				18K2A245 (b)
rev.	description	date	name	part no:	SEE SHEET 5

NOTES: (c)

- FOR WAVESOLDERING (SOLDER BATH TEMPERATURE 240°C FOR 5 SEC. AND SOLDER PREHEAT 120°C FOR 120 SEC.)
- METALSHELLS: COPPER ALLOY; min. 315µin TIN over 40-80µin NICKEL
- INSULATORS: PBT GF UL 94 V-0; BLACK
- CONTACTS: COPPER ALLOY
PLATING: GOLD FLASH over NICKEL
- THREADED SPACER CLIPS: COPPER ALLOY;
min. 200µin TIN over 80µin NICKEL
PCB-HOLE: $\varnothing 3,1 \pm 0,1$; PCB THICKNESS 1,6mm
- COLLARS: COPPER ALLOY; min. 200µin TIN over 80µin NICKEL
- FRAME: ZINC DIE CAST; NICKEL PLATED
- O-RING: SILICON; BLUE
- RUBBER GASKET: TPE; BLACK
- SEALING COMPOUND: PUR; BLUE
- HEXLOCKING SCREWS: STAINLESS STEEL
- P.C.B. HOLE DRILLINGS + RECOMMENDED PANEL CUT-OUT ON SHEET 2
- RECOMMENDED TORQUE FOR MOUNTING SCREW 35Ncm (3.1 in.LB) / max. 40Ncm (3.5 in.LB)
- CONNECTOR IS PART MARKED: 6STD37PAR99E20X CONEC ABC (b)

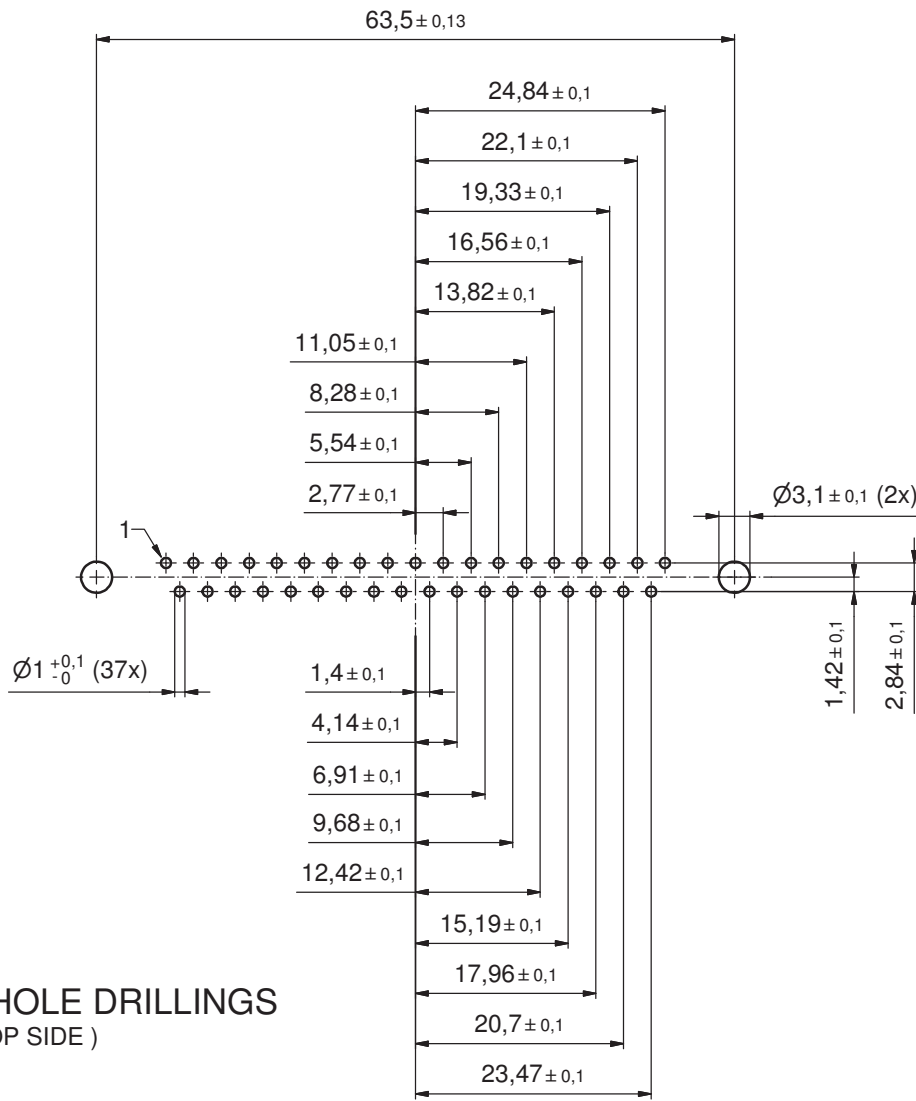
AT ALL TIMES WATER RESISTANT CONNECTORS NOT IN USE SHOULD BE COVERED WITH A CONEC WATER RESISTANT CAP OR WATER TIGHT HOOD.



Directive 2002/95/EC RoHS compliant

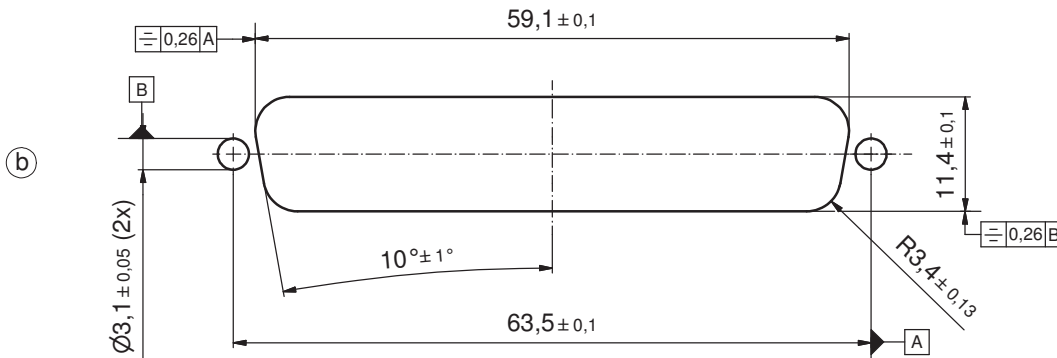
THIS DRAWING MAY NOT BE COPIED OR REPRODUCED IN ANY WAY, AND MAY NOT BE PASSED ON TO A THIRD PARTY WITHOUT WRITTEN PERMISSION. OWNERSHIP AND COPYRIGHT OF CONEC GmbH DO NOT ALTER CAD DRAWING BY HAND				tolerance		dim. in mm	scale: 2:1 (5:1)
				date	name		material: SEE NOTES
				drawn	04.02.04	Lehmenkühler	title: D-SUB MALE 37pos. SOLDER PIN STRAIGHT with threaded spacer clip and hexlocking screw
				appd.	04.02.04	Mickenbecker	
norm			dwg no:				
5 x c	A3963	11.04.2011	K.H.	d-old			DIN-A3
5 x b	A1983	31.03.2004	Mkf.				sh: 7/8
a	Original						
rev.	description	date	name	CONEC		part no: 6STD37PAR99E20X	
						18K2A245	

(b)



P.C.B. HOLE DRILLINGS
(P.C.B. TOP SIDE)

RECOMMENDED PANEL CUT-OUT



Directive 2002/95/EC RoHS compliant

THIS DRAWING MAY NOT BE COPIED OR REPRODUCED IN ANY WAY, AND MAY NOT BE PASSED ON TO A THIRD PARTY WITHOUT WRITTEN PERMISSION. OWNERSHIP AND COPYRIGHT OF CONEC GmbH DO NOT ALTER CAD DRAWING BY HAND		tolerance		dim. in mm	scale: 2:1	
		date			material: SEE SHEET 7	
		drawn	04.02.04	name	title:	
		appd.	04.02.04	Mickenbecker	P.C.B. HOLE DRILLINGS RECOMMENDED PANEL CUT-OUT D-SUB MALE 37pos. SOLDER PIN STRAIGHT	
norm		d-old		dwg no:		
3 x b	Ä3963	11.04.2011	K.H.	DIN-A3		
a	Original			sh: 8/8		
rev.	description	date	name	part no: SEE SHEET 7		



18K2A245

(b)