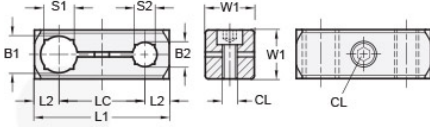




## MT20/20-CC2WP-AN

Ruland Two-Way Connector Clamp, Thru Holes 20mmx20mm, L 66mm, Black Anodized Aluminum



### Description

Ruland MT20/20-CC2WP-AN a two-way connector clamp with parallel thru holes for 20mm round and 16mm square tubes, M6 clamp screws, 25mm width/height, and 66mm overall length. It is designed to fit on Ruland tubes and flange bolt bases that begin with MTXX. MT20/20-CC2WP-AN is aluminum with a black anodized finish and screws are 304 stainless steel for added corrosion resistance when compared to unplated types. This two-way connector clamp is commonly used to support tubes for mounting sensors, screens, reflectors, plexiglass machine guards, and other industrial components. The parallel thru holes make MT20/20-CC2WP-AN an ideal connector clamp for compact mounting systems such as those found on small conveyors. MT20-ALK-M6-30 adjustable clamping handles can be used in place of standard hardware allowing for rapid repositioning of tubes or the connector without the need for tools. MT20/20-CC2WP-AN is manufactured by Otto Ganter, inventoried by Ruland, and RoHS3 compliant.

### Product Specifications

<b>Thru Hole 1 Diameter B1</b>	20 mm	<b>Thru Hole 2 Diameter B2</b>	20 mm
<b>Thru Hole Tolerance</b>	+0.13/-0 mm	<b>Thru Hole 2 Tolerance</b>	+0.13/-0 mm
<b>Overall Length L1</b>	66 mm	<b>Edge To Center L2</b>	12.5 mm
<b>Center To Center LC</b>	41 mm	<b>Square Thru Hole 1 S1</b>	16 mm
<b>Square Thru Hole 2 S2</b>	16 mm	<b>Width &amp; Height W1</b>	25 mm
<b>Clamp Screw CL</b>	M6	<b>Weight (lbs)</b>	0.146200
<b>Material Specification</b>	Anodized Aluminum	<b>Manufacturer</b>	JW Winco/ Otto Ganter
<b>UPC</b>	634529231661	<b>Country of Origin</b>	Germany
<b>Tariff Code</b>	7609.00.0000		

**Note 1** Performance ratings are for guidance only. The user must determine suitability for a particular application.

**Prop 65**  **WARNING** This product can expose you to the chemical Nickel (metallic), known to the State of California to cause cancer. For more information go to [www.P65Warnings.ca.gov](http://www.P65Warnings.ca.gov).