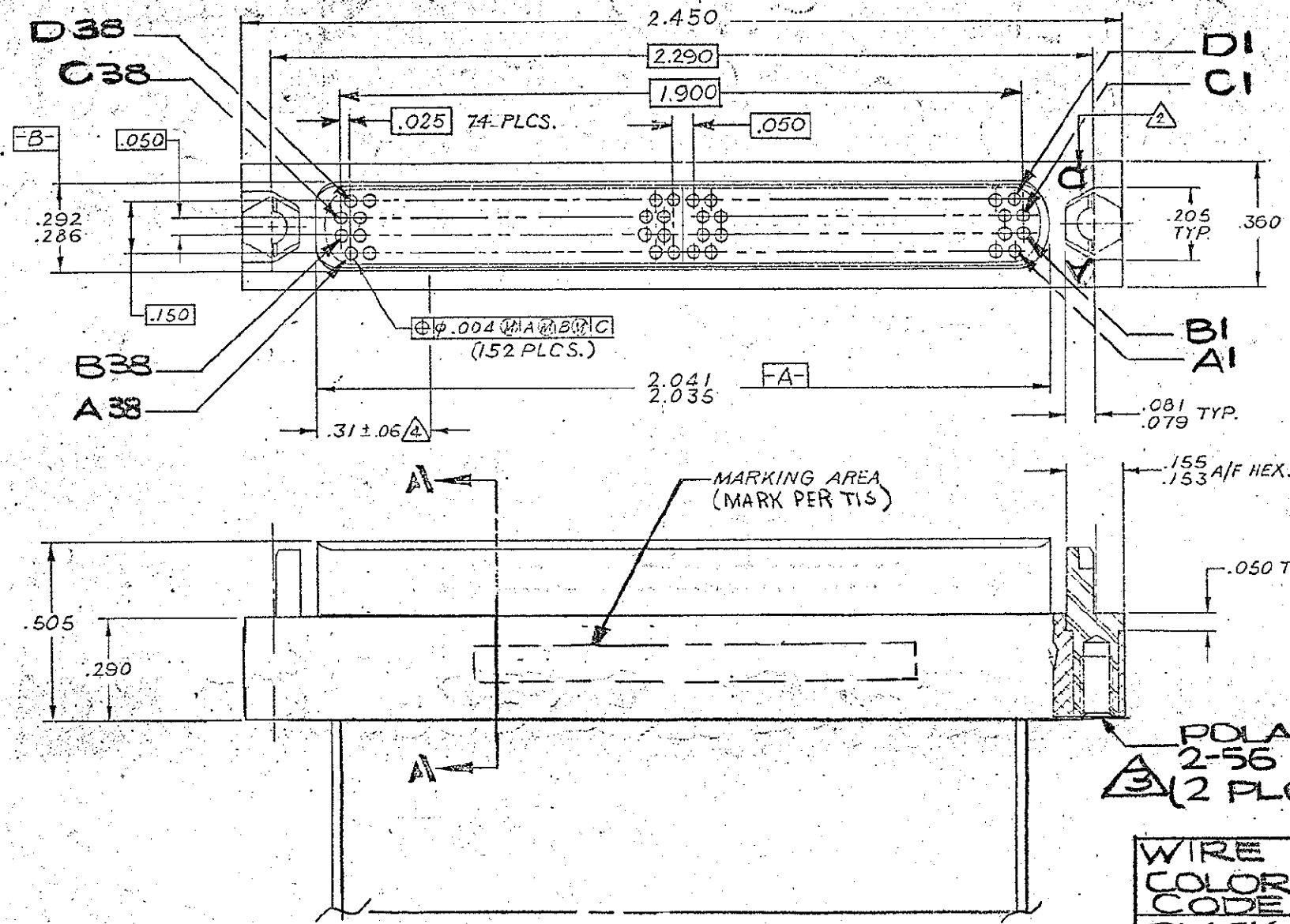


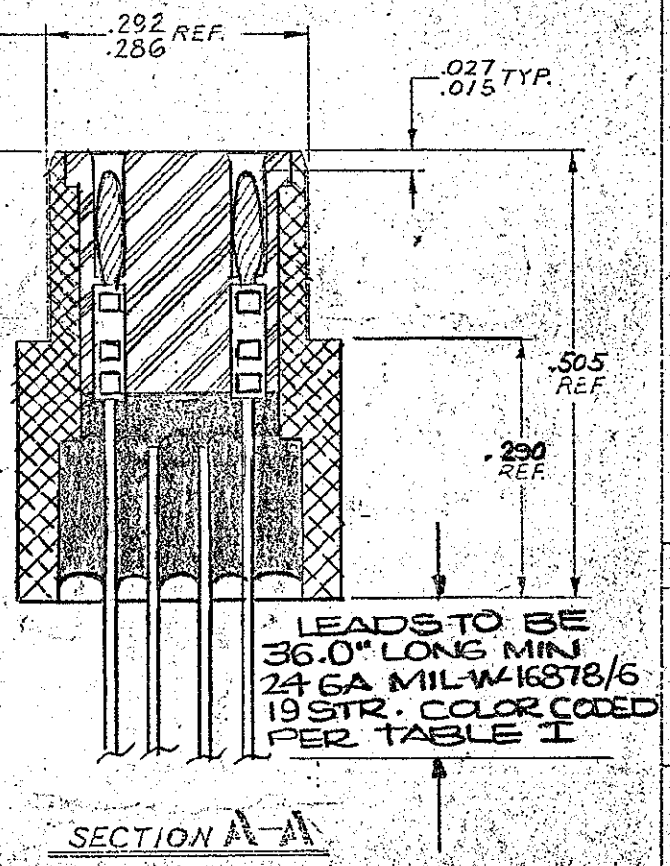
REVISIONS				
ZONE	LTR	ECN	DESCRIPTION	APPROVED
A		33726	NEW RELEASE	9/18/91
B		35408	CAV. LOC. UPDATE SEE ECN	
C		35180	CORRECT LTR DESIGNATOR	1/11/92
D		36545	MKG. LOC. UPDATE	9/5/96
E		40427	UPDATE REV. LETTER	8/16/98



POLARIZING KEY  
 2-56 UNC-2B X .125 DEEP MIN  
 (2 PLCS)

TABLE I

WIRE COLOR CODE	CAVITY NO. (A, B, C, D)
BLACK	1, 11, 21, 31
BROWN	2, 12, 22, 32
RED	3, 13, 23, 33
ORANGE	4, 14, 24, 34
YELLOW	5, 15, 25, 35
GREEN	6, 16, 26, 36
BLUE	7, 17, 27, 37
VIOLET	8, 18, 28, 38
GRAY	9, 19, 29
WHITE	10, 20, 30



LEADS TO BE  
 36.0" LONG MIN  
 24 GA MIL-W-16878/6  
 19 STR. COLOR CODED  
 PER TABLE I

NOTES: UNLESS OTHERWISE SPECIFIED.

- 1. MASK & IRIDITE.
- 2. ORIENTATION IS OPTIONAL FOR LETTER DESIGNATORS.
- 3. SUPPLIED LOOSE PACKED.
- 4. .286/.292 DIM. APPLIES ONLY OVER A DISTANCE OF .31 FROM EACH END OF THE KEYSTONE.
- 5. CRIMP LEADS INTO CONTACTS PER MEP 302-05.
- 6. EPOXY USED IS EMERSON & CLIMING STYCAST 2850 FT. COLOR BLUE P/N: 194-8702-6260. USE OF OTHER ADHESIVE OTHER THAN EPOXY IS NOT PERMITTED (I.E. LOCTITE CYANOACRYLATE).

- 7. PREPARATION OF NICKEL PLTD. SURFACE IS REQ'D TO ENSURE BONDING OF EPOXY ENCAPSULANT TO SHELL.
- 8. MEASURE AND RECORD MATING FORCE PER MEP 302-21.

QTY	LOC	PART OR IDENTIFYING NO.	SIGNATURE	DATE
UNLESS OTHERWISE SPECIFIED DIMENSIONS ARE IN INCHES TOLERANCES ARE:		DRAWING NO.		
FRACTIONS DECIMALS ANGLES		DATE		
= 1/100 ± 0.005		3/14/91		
MATERIAL		SHIMADZU		
FINISH		ZUR91		
PREPARED BY	DATE	APPROVED BY	DATE	
NEXT ASSY	USED ON	APPLICATION		
		DO NOT SCALE DRAWING		
PARTS LIST		MICRODOT CONNECTORS A DIVISION OF UNI-STAR INDUSTRIES INC. 36 FISHERMAN AVE., SC. FISHERMAN, CA 94088		
CONNECTOR, HIGH DENSITY 152 CONTACT		B32		
HDSM-152P4D9-36.0 CDM		CASE		
B 98278		095-9091-1061		
NONE		1/31		