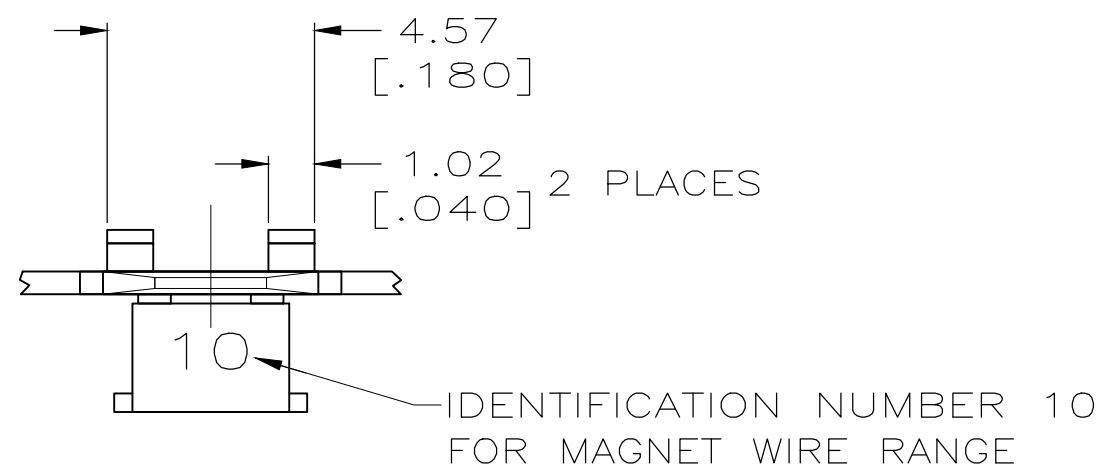
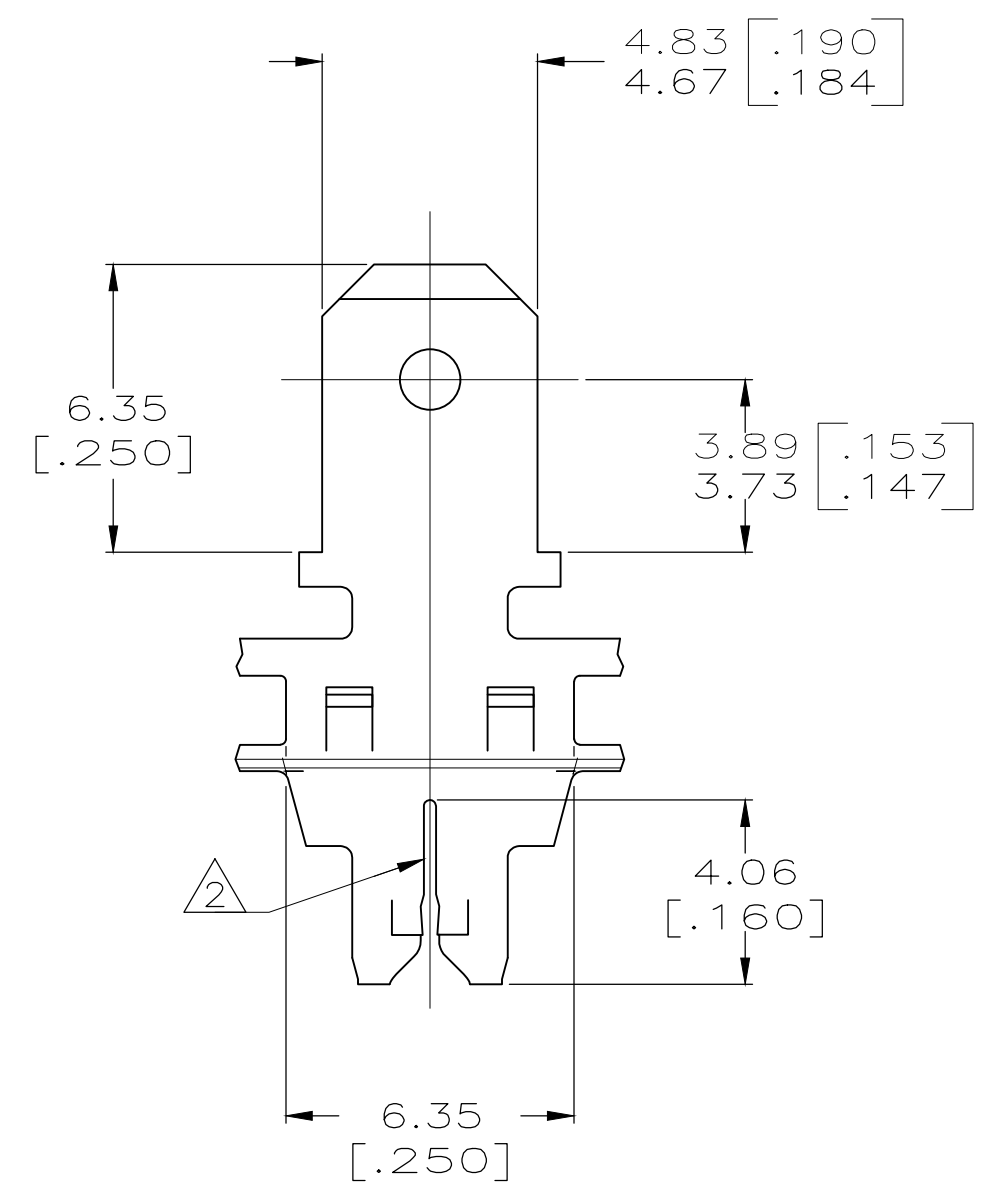
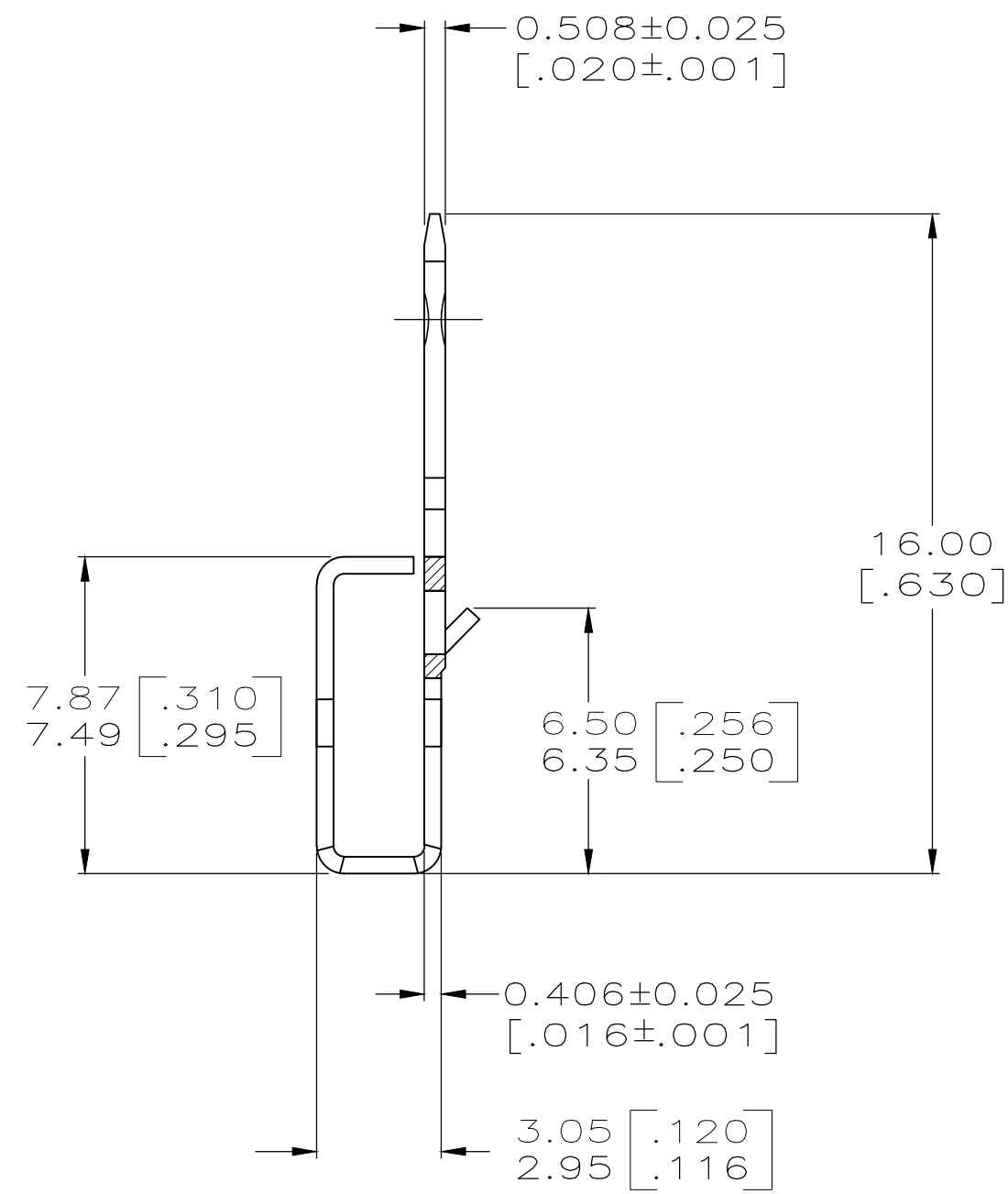
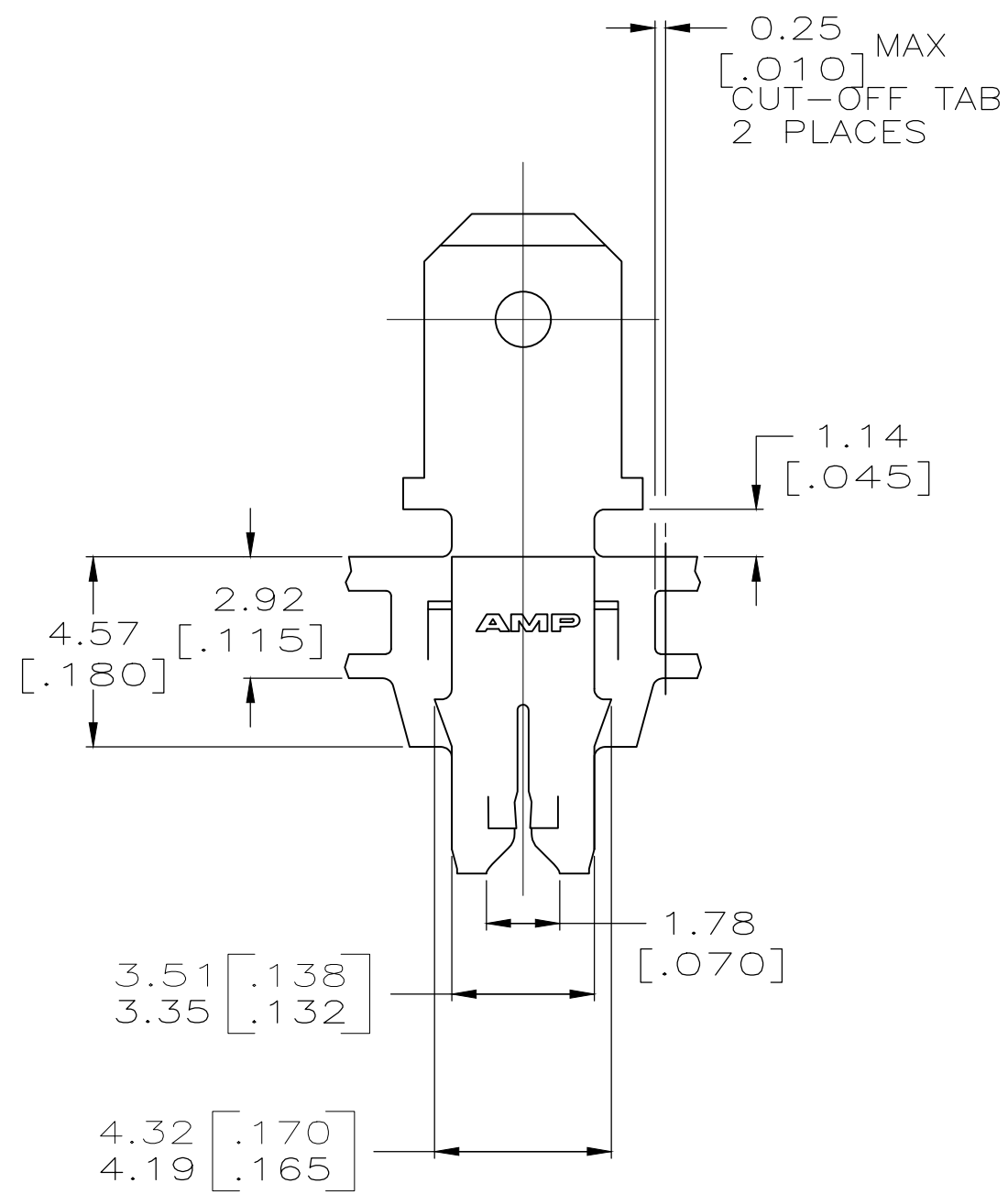


THIS DRAWING IS UNPUBLISHED. RELEASED FOR PUBLICATION  
 © COPYRIGHT - By - ALL RIGHTS RESERVED.

LOC		DIST		REVISIONS			
P	LTR	DESCRIPTION	DATE	DWN	APVD		
AF	50	K2	REVISED PER ECR-19-013909	01OCT2019	PC	MB	



1 CONTINUOUS STRIP ON REELS WITH TERMINALS LOCATED ON 8.38±0.08 [.330±.003] CENTERS.  
 2 SLOT TERMINATES A SINGLE OR DOUBLE MAGNET WIRE OF THE SAME SIZE AND TYPE; COPPER RANGE: 0.36-0.57 mm [#27-#23] AWG; ALUMINIUM RANGE 0.51-0.64mm [#24-#22] AWG, ALUMINIUM WIRE RANGE APPLIES FOR POST TIN PLATED PART NUMBERS ONLY.



082 PRE-MILLED BRASS	63256-2
OBSOLETE 4M PRE-MILLED BRASS	63256-1
MATERIAL	PART NUMBER

THIS DRAWING IS A CONTROLLED DOCUMENT.		DWN 28/MAR/94 R.R. BUCHHEISTER JR.	<b>STE</b> TE Connectivity	
DIMENSIONS: INCHES		CHK 04/APR/94 MICHAEL S. FEHER		
TOLERANCES UNLESS OTHERWISE SPECIFIED:		APVD 04/APR/94 NELSON E NEFF	NAME	
0 PLC ± -		PRODUCT SPEC	TAB, 4.75 [.187] FASTON,™	
1 PLC ± -		APPLICATION SPEC	MAG-MATE™	
2 PLC ± 0.25 [.010]		114-2094	SIZE	CAGE CODE
3 PLC ± -		114-2094	A2	00779
4 PLC ± -		WEIGHT	DRAWING NO	
ANGLES ± -		-	C-63256	
MATERIAL	FINISH	SCALE		SHEET
SEE CHART	TIN PLATED	6:1		1 OF 1
CUSTOMER DRAWING		REV		K2