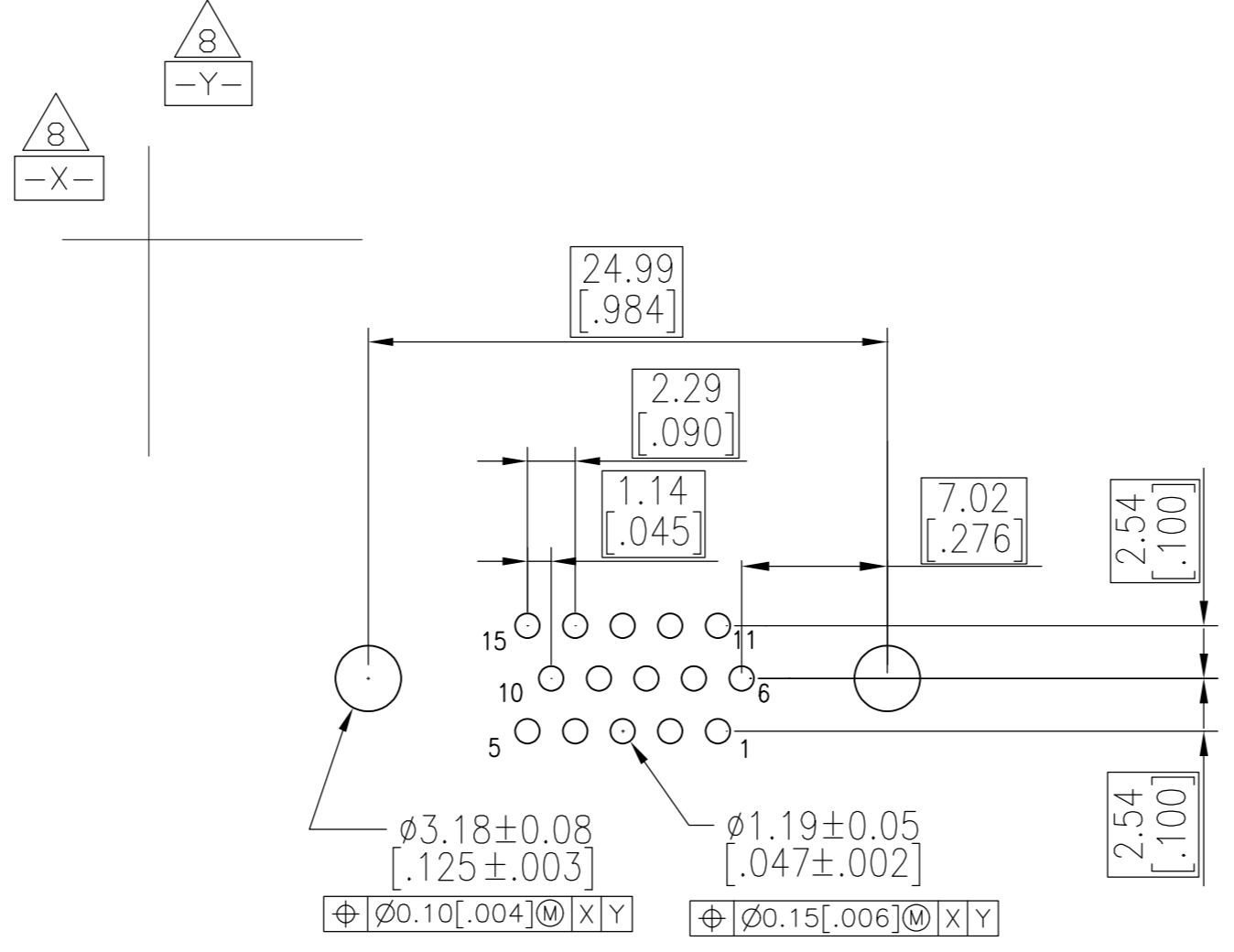
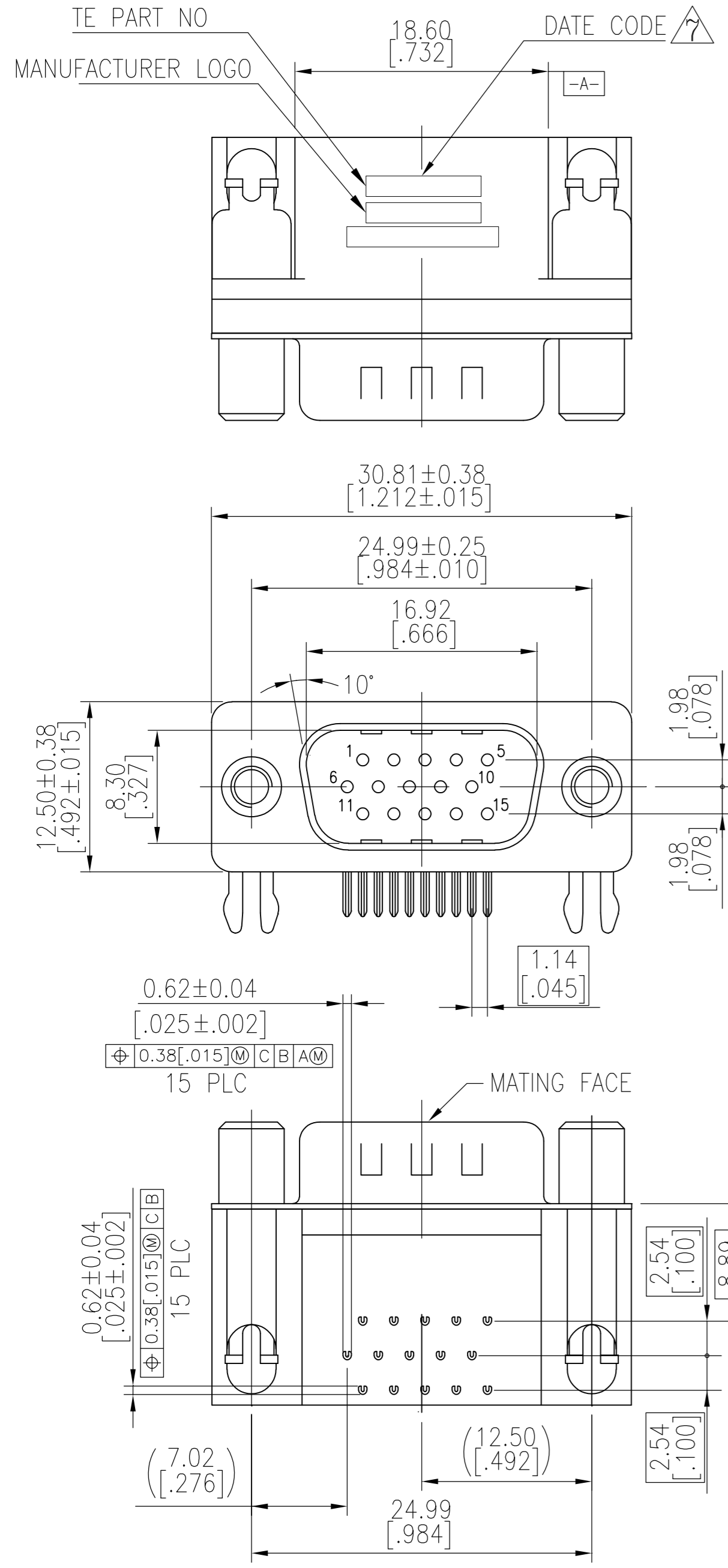
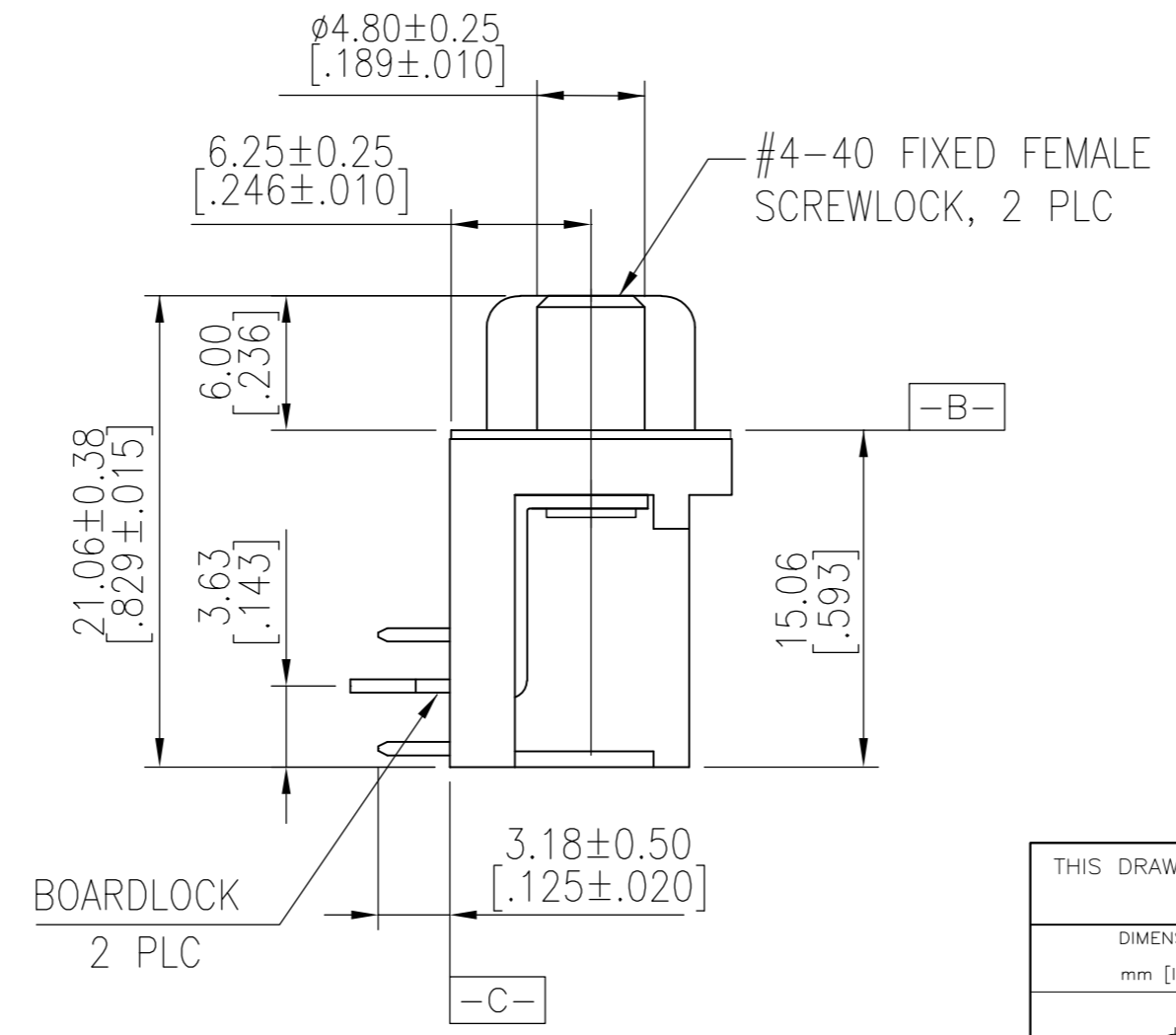


THIS DRAWING IS UNPUBLISHED. RELEASED FOR PUBLICATION  
 © COPYRIGHT - By - ALL RIGHTS RESERVED.

| REVISIONS |     |                           |           |       |
|-----------|-----|---------------------------|-----------|-------|
| P         | LTR | DESCRIPTION               | DATE      | APVD  |
| E         |     | REVISED PER ECO-17-013750 | 16FEB2018 | AP DG |



RECOMMENDED PCB LAYOUT



1. HOUSING MATERIAL: PBT, GLASS FILLED, BLACK, UL 94V-0 RATED.
2. CONTACT MATERIAL: BRASS.
3. CONTACT FINISH: GOLD PLATE IN MATING AREA (SEE TABLE), 120 $\mu$ " MIN TIN PLATE ON SOLDER TAIL, BOTH OVER 50 $\mu$ " MIN NICKEL UNDERPLATE.
4. SHELL: STEEL, NICKEL PLATE.
5. BOARDLOCK: BRASS, 100 $\mu$ " MIN TIN PLATE.
6. FEMALE SCREWLOCK: BRASS, NICKEL PLATE.

$\triangle 7$  FOUR DIGIT DATE CODE IN THIS FORMAT.  
 Year 01 45 Manufacturing Week

$\triangle 8$  DATUMS  $-X-$  &  $-Y-$  TO BE ESTABLISHED BY CUSTOMER.

|                         |                            |             |
|-------------------------|----------------------------|-------------|
| OBSELETE                | Gold Flash                 | 5749768-3   |
| OBSELETE                | 15 $\mu$ " MIN             | 5749768-2   |
| SUPERSEDED BY 2311775-1 | 30 $\mu$ " MIN             | 5749768-1   |
|                         | CONTACT MATING AREA FINISH | PART NUMBER |

|  |  |   |                        |                      |
|--|--|---|------------------------|----------------------|
| THIS DRAWING IS A CONTROLLED DOCUMENT. |  | DWN J.GERACE 22FEB06                          | TE Connectivity        |                      |
| DIMENSIONS: mm [INCHES]                |  | CHK S.BOLASH 22FEB06                          | APVDM.WALMSLEY 22FEB06 |                      |
| TOLERANCES UNLESS OTHERWISE SPECIFIED: |  | NAME AMPLIMITE HD-22 15 POS PLUG, RIGHT ANGLE |                        |                      |
| 0 PLC $\pm$ -                          |  | PRODUCT SPEC 108-1092                         |                        |                      |
| 1 PLC $\pm$ 0.38 [.015]                |  | APPLICATION SPEC 114-13198                    |                        |                      |
| 2 PLC $\pm$ 0.25 [.010]                |  | SIZE A2                                       | CAGE CODE 00779        | DRAWING NO C=5749768 |
| 3 PLC $\pm$ 0.15 [.006]                |  | WEIGHT 0.000000                               | SCALE 3:1              | SHEET 1 of 1         |
| 4 PLC $\pm$ -                          |  | CUSTOMER DRAWING                              |                        |                      |
| ANGLES $\pm$ 2'                        |  | REV E   |                        |                      |
| FINISH SEE NOTES                       |  | RESTRICTED TO -                               |                        |                      |