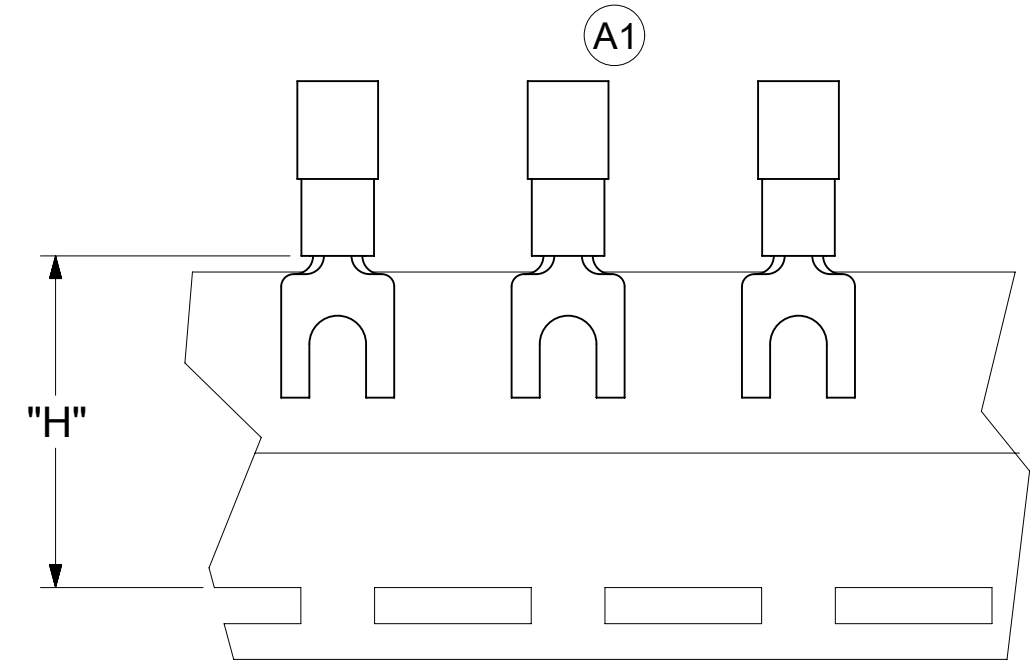
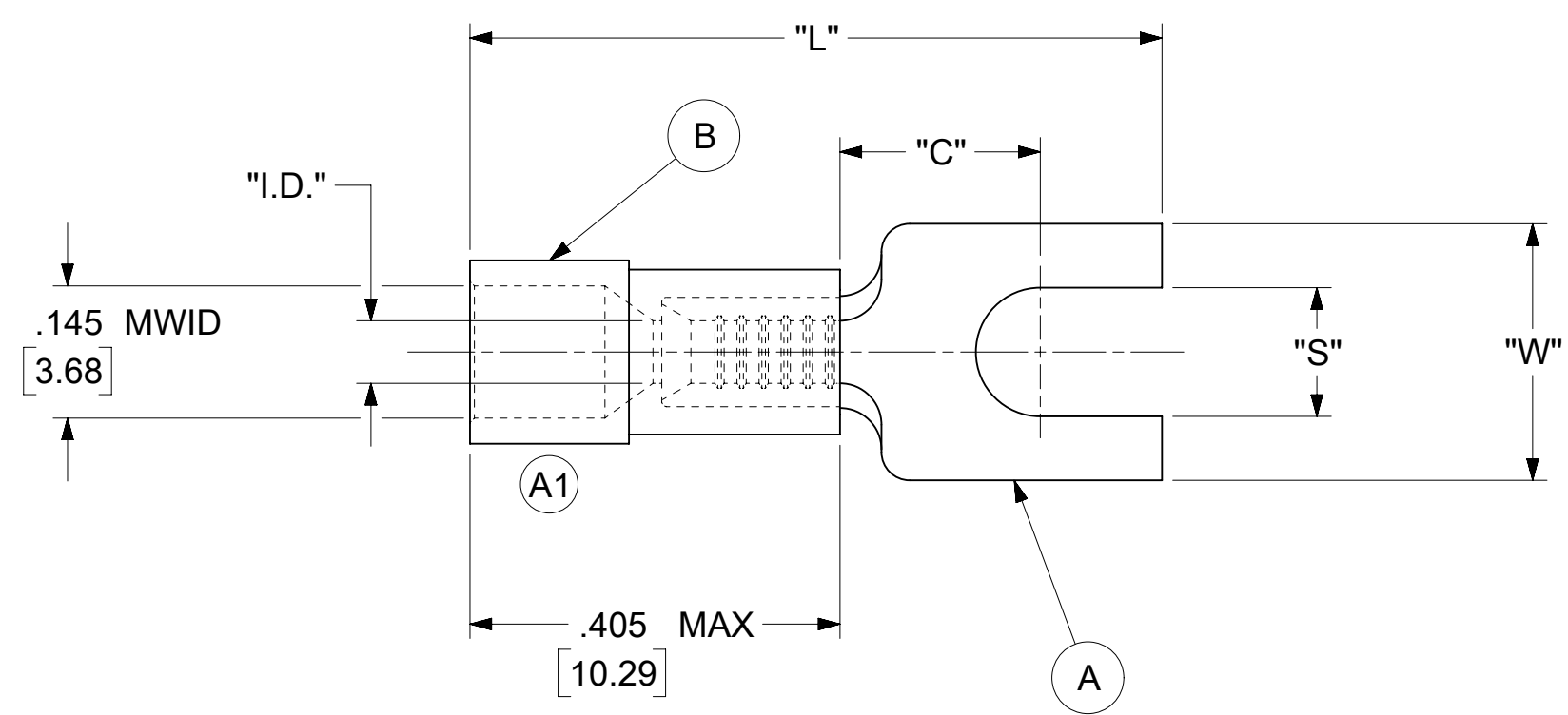


LOOSE PIECE		TAPE MOUNTED		SPECIFICATIONS							
MATERIAL NUMBER	ENGINEERING NUMBER	MATERIAL NUMBER	ENGINEERING NUMBER	STUD SIZE	"S" ±.005 [0.13]	"W" ±.010 [0.25]	"C" MIN.	"L" MAX.	"I.D." MIN.	"H"	STOCK THICKNESS
191310038	AA-234-06X	191310037	AA-234-06XT	6	.146 [3.71]	.291 [7.39]	.207 [5.26]	.785 [19.94]	.062 [1.57]	.980 [24.89]	.028 $\frac{+.001}{-.000}$ [0.71]
191310036	AA-234-08X	191310035	AA-234-08XT	8	.173 [4.39]						
191310034	AA-234-10X	---	---	10	.198 [5.03]						
191310031	AA-238-06X	191310030	AA-238-06XT	6	.146 [3.71]	.245 [6.22]	.207 [5.26]	.785 [19.94]	.062 [1.57]	.980 [24.89]	.028 $\frac{+.001}{-.000}$ [0.71]



PARTS ON TAPE

NOTES:

- MATERIAL:
 - (A). SPADE TONGUE TERMINAL: COPPER
PLATING: ELECTRO-TIN (.0003 MIN.)
 - (B). INSULATION: MOLDED PVC (RED)
- MWID: MAXIMUM WIRE INSULATION DIAMETER
- WIRE SIZE: 22 -18 AWG
0.25 -1.5 MM²
- "UL" LISTING #E32244
"CSA" LISTING #18689
- ALL DIMENSIONS IN INCHES/[MM].
- PARTS ARE RoHS COMPLIANT.
- DIMS. SHOWN ARE FOR REFERENCE ONLY.

SYMBOLS	THIS DRAWING CONTAINS INFORMATION THAT IS PROPRIETARY TO MOLEX ELECTRONIC TECHNOLOGIES, LLC AND SHOULD NOT BE USED WITHOUT WRITTEN PERMISSION					
	DIMENSION UNITS	SCALE	CURRENT REV DESC: DWG ERROR. FIXED INSUL PROFILE			
∇ = 0	INCH/MM	NTS	EC NO: 647871 DRWN: DMYRICK 2020/10/26 CHK'D: KBURROUGHS 2020/10/27 APPR: KBURROUGHS 2020/10/27 INITIAL REVISION: DRWN: JJ 1984/11/02 APPR: JMACNEIL 2019/08/05			
∇ = 0	GENERAL TOLERANCES (UNLESS SPECIFIED)					
∇ = 0	MM	INCH				
∇ = 0	4 PLACES ± --- ± ---	3 PLACES ± --- ± .005				
∇ = 0	2 PLACES ± 0.13 ± .01	1 PLACE ± 0.25 ± ---	PRODUCT CUSTOMER DRAWING DOCUMENT NUMBER: 191310039 DOC TYPE: PSD DOC PART: 000 REVISION: A1			
∇ = 0	0 PLACES ± --- ± ---	ANGULAR TOL ± 0.5°				
∇ = 0	DRAFT WHERE APPLICABLE MUST REMAIN WITHIN DIMENSIONS					
∇ = 0	THIRD ANGLE PROJECTION	DRAWING	SERIES	MATERIAL NUMBER	CUSTOMER	SHEET NUMBER
∇ = 0		C-SIZE	19131	SEE TABLE	GENERAL MARKET	1 OF 1