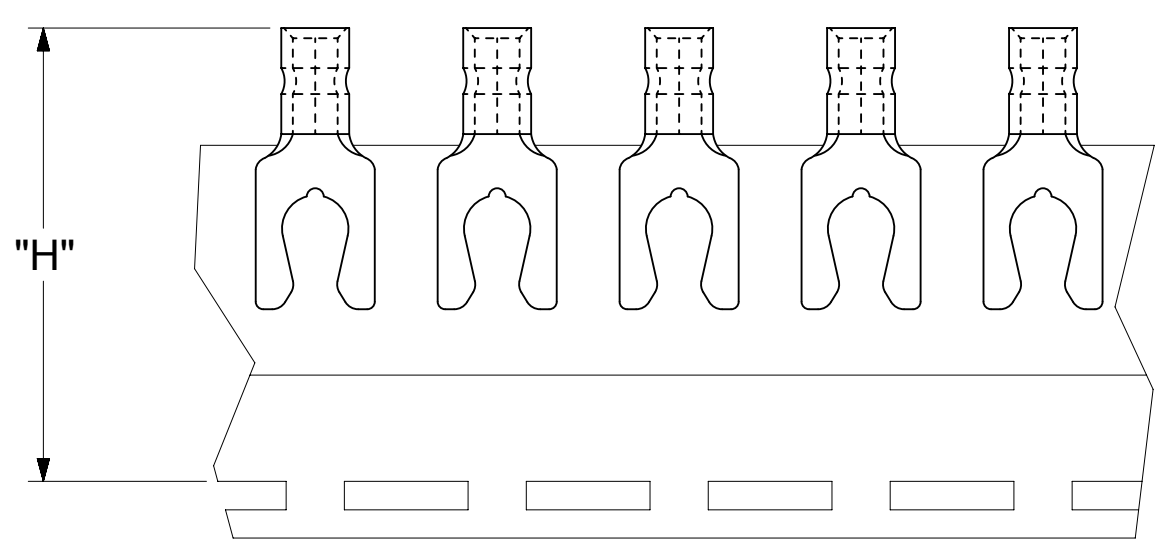
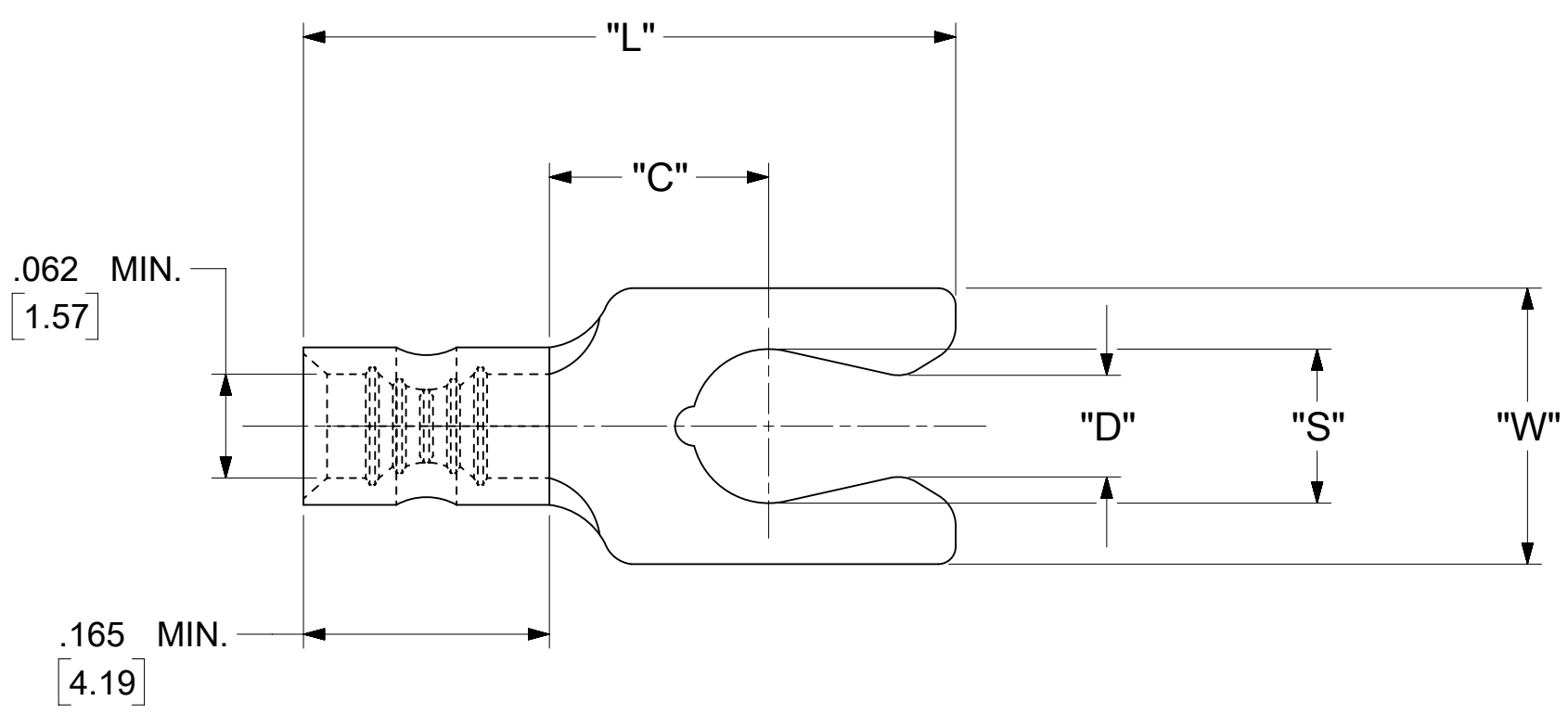


LOOSE PIECE		TAPE MOUNTED		SPECIFICATIONS						
MATERIAL NUMBER	ENGINEERING NUMBER	MATERIAL NUMBER	ENGINEERING NUMBER	STUD SIZE	"S" ±.005 [0.13]	"W" ±.010 [0.25]	"C" MIN.	"L" MAX.	"D" ±.005 [0.13]	"H"
190980023	AA-1714-08	190980080	AA-1714-08T	8	.173 [4.39]	.310 [7.87]	.261 [6.63]	.646 [16.41]	.139	1.155 [29.34]
190980024	AA-1715-10	190980081	AA-1715-10T	10	.198 [5.03]	.330 [8.38]	.261 [6.63]	.694 [17.63]	.156	1.155 [29.34]



PARTS ON TAPE

NOTES:

- MATERIAL: TERMINAL: COPPER (STOCK THICKNESS $.028 \frac{+.001}{-.000}$ [0.71])
PLATING: ELECTRO-TIN (.0003 MIN.)
- WIRE SIZE: 22 -18 AWG
0.25 -1.5 MM²
- "UL" LISTING #E32244
"CSA" LISTING #18689
- ALL DIMENSIONS IN INCHES/[MM].
- PARTS ARE ROHS COMPLIANT.
- DIMS. SHOWN ARE FOR REFERENCE ONLY.

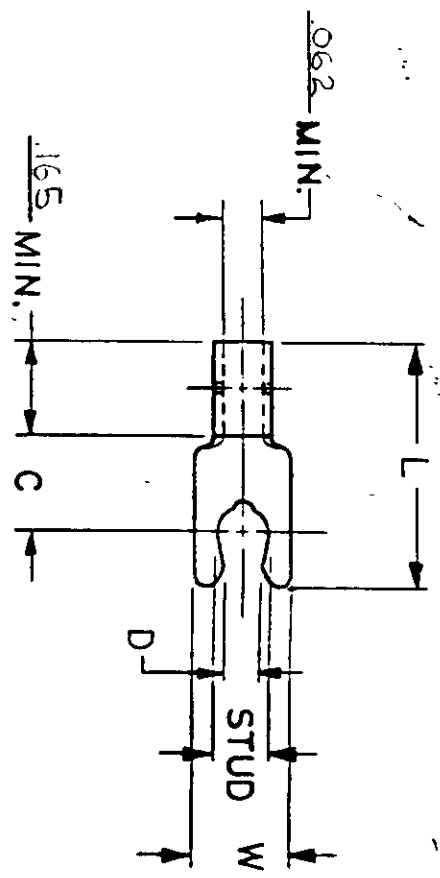
SYMBOLS DIMENSION UNITS SCALE CURRENT REV DESC: MIGRATION TO ECTR/NX EC NO: 620820 DRWN: ABENJAMINLW 2019/07/11 CHK'D: GROJAS01 2019/07/17 APPR: JMACNEIL 2019/08/06 INITIAL REVISION: DRWN: GZ 1985/04/05 APPR: JMACNEIL 2019/08/06 DRAFT WHERE APPLICABLE MUST REMAIN WITHIN DIMENSIONS THIRD ANGLE PROJECTION DRAWING SERIES C-SIZE 19098	THIS DRAWING CONTAINS INFORMATION THAT IS PROPRIETARY TO MOLEX ELECTRONIC TECHNOLOGIES, LLC AND SHOULD NOT BE USED WITHOUT WRITTEN PERMISSION			molex SNAP SPADE SHORT TONGUE TERMINAL KRIMPTITE SERIES PRODUCT CUSTOMER DRAWING		
	INCH/MM GENERAL TOLERANCES (UNLESS SPECIFIED) 4 PLACES ± --- ± --- 3 PLACES ± --- ± .005 2 PLACES ± 0.13 ± .01 1 PLACE ± 0.25 ± --- 0 PLACES ± --- ± --- ANGULAR TOL ± 0.5 °	NTS MM INCH ± --- ± --- ± .005 ± .01 ± ---	DOCUMENT NUMBER 190980023 MATERIAL NUMBER SEE TABLE			
	DOCUMENT STATUS P1 RELEASE DATE 2019/08/06 14:51:04					

NOTES:

① MAT'L: COPPER, STOCK TKN. 028
 PLATING: ELECTRO-TIN (.0003 MIN.)

② "UL" LISTING # E32244
 "CSA" LISTING # 186R9

FILE NO. AA-CD-105-03



WIRE SIZE: 22-18 AWG.
 .25-1.5 MM²

PART NUMBER	"W" ±.010	"C" MIN.	"L" MAX.	"D" ±.005	AVAILABLE STUD SIZES	DIMENSIONAL TOLERANCES UNLESS OTHERWISE SPECIFIED		SCALE:	NTS	DATE	TITLE:	DWG. NO.	CUSTOMER DWG.
						FRAC.	DEC.						
AA-1714-	.310	.261	.646	.139	08 (.173 ±.005)					4.5.85	SNAP SPADE SHORT TONGUE TERMINAL KRIMP TITE SERIES	A	
AA-1715-	.330	.261	.694	.156	10 (.198 ±.005)								

