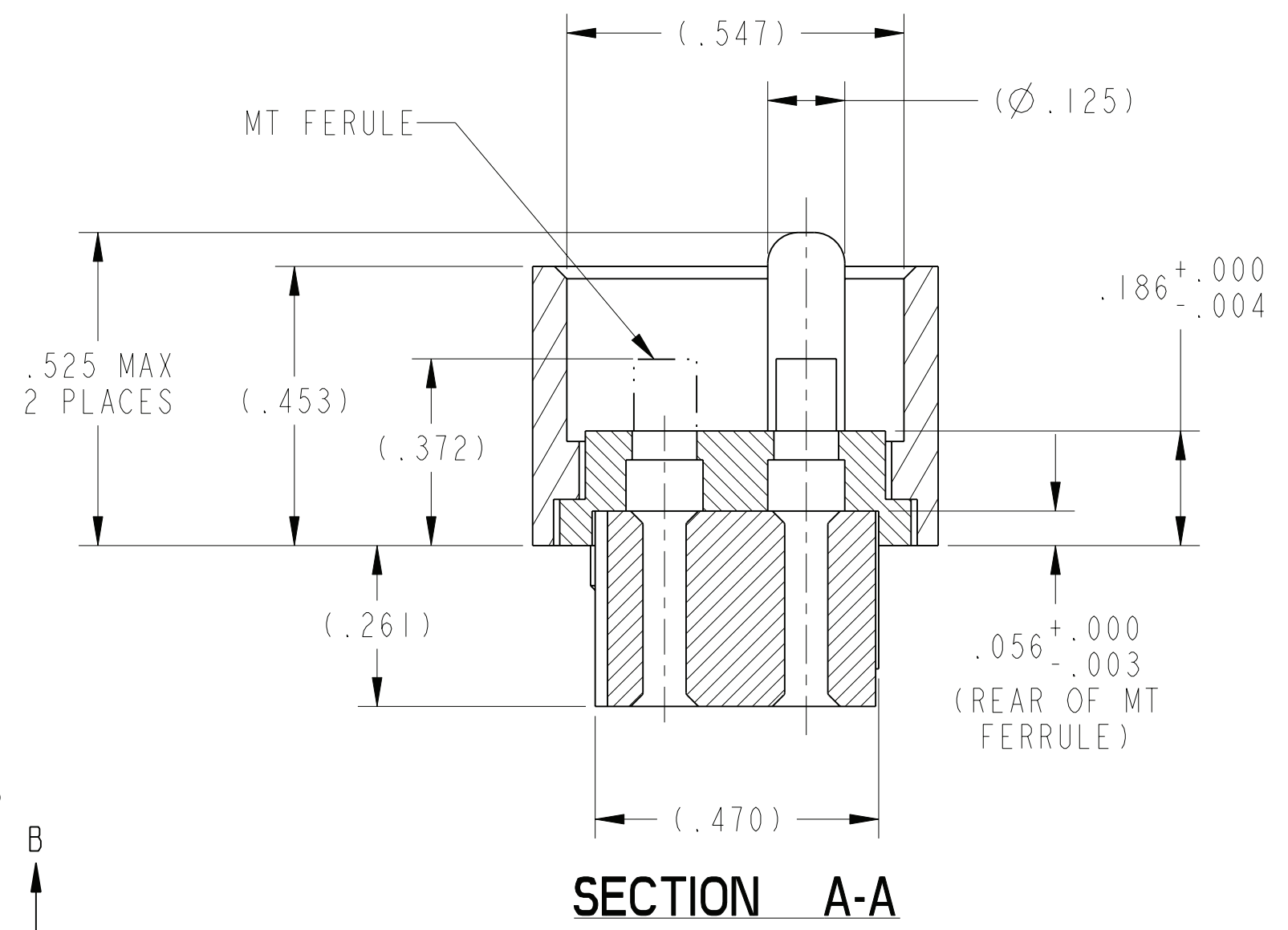
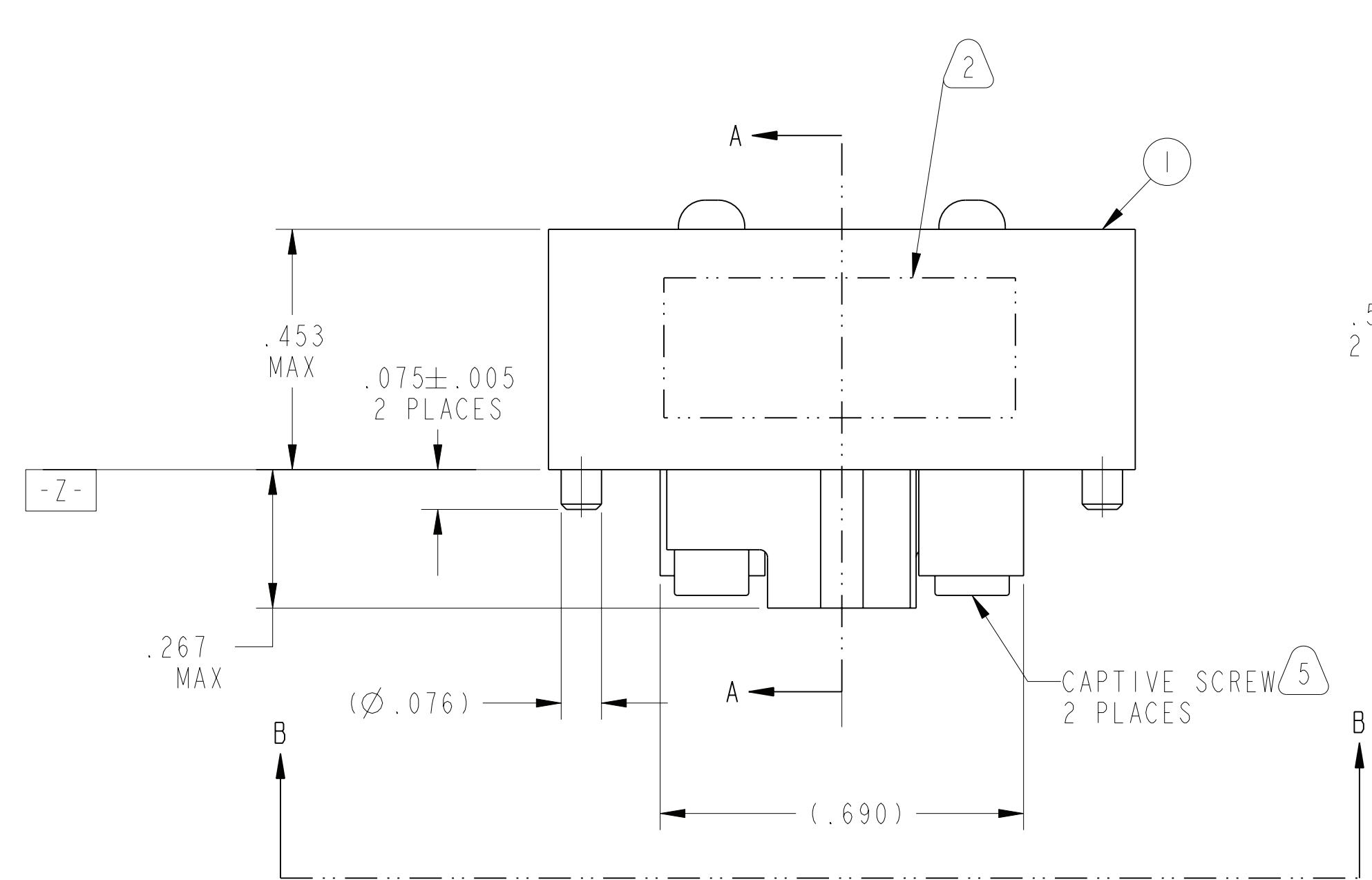
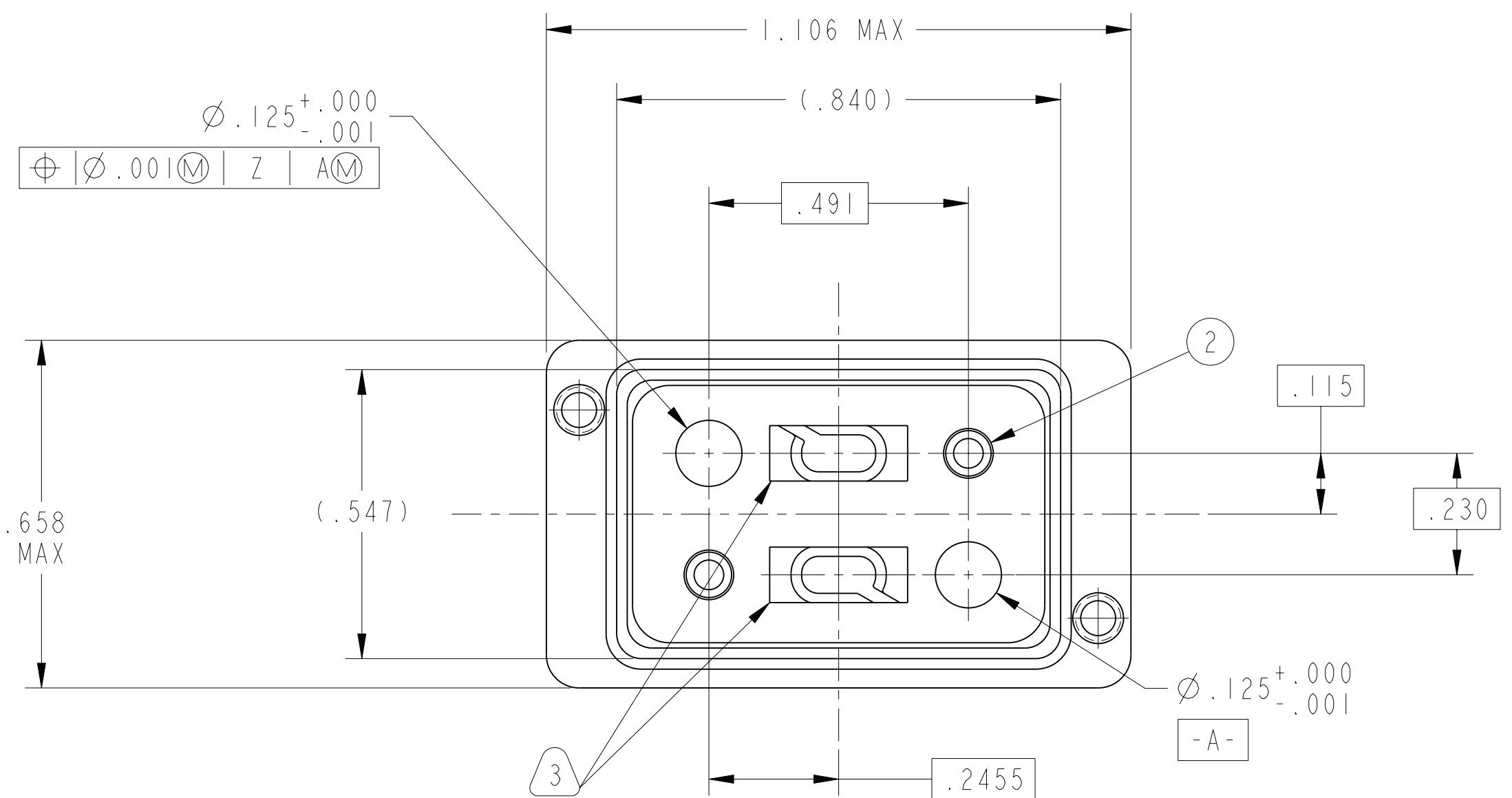


REV. B	SHEET 1 OF 3	DOCUMENT NO. 10-504639-002
REVISIONS		
LTR	DESCRIPTION	DATE
A	PRODUCTION RELEASE	5/10/11
B	CL(11) SEE CHANGE NOTICE ECN: B2377	1/13/12 RKC



POS	QTY	PART NUMBER	DESCRIPTION	NOTE
2	1	10-504826-008	INSERT ASSEMBLY, FIBER OPTIC	
1	1	10-504640-002	SHELL, BACKPLANE	

APPROVALS		DATE	PARTS LIST	
PREPARED BY	R. CHAPMAN	11-May-09	AMPHENOL CORPORATION 40-60 DELAWARE AVENUE SIDNEY, N.Y. 13838	
ENGINEER IN CHARGE	E. HICKEY			
DESIGN MANAGER	E. HICKEY			
DESIGN ACTIVITY GROUP	LRM			
THIRD ANGLE PROJECTION			SIZE	CAGE CODE
			C	77820
			DOCUMENT NO.	REV.
			10-504639-002	B
SCALE: 3.0 REF: 10-504639-001			SHEET 1 OF 3	

UNLESS OTHERWISE SPECIFIED

SPECIFICATIONS

MATERIAL SPEC. NA

PROCESS SPEC. 9-3856-5 9-3895

LINEAR DIMENSIONS ARE IN INCHES
 TOLERANCES:
 .XXXX = ±.0005 ANGLES = ±2°
 .XXX = ±.010
 .XX = ±.03
 .X = ±.1

DIM. & TOL. PER ASME Y14.5M;
 DRM PER MIL-DTL-31000;
 OTHER Amphenol Sds. PER 9-3800

LEGENDS:
 = FLAG NOTE CALL OUT REFERENCE ONLY

NOTES: SEE SHEET 2

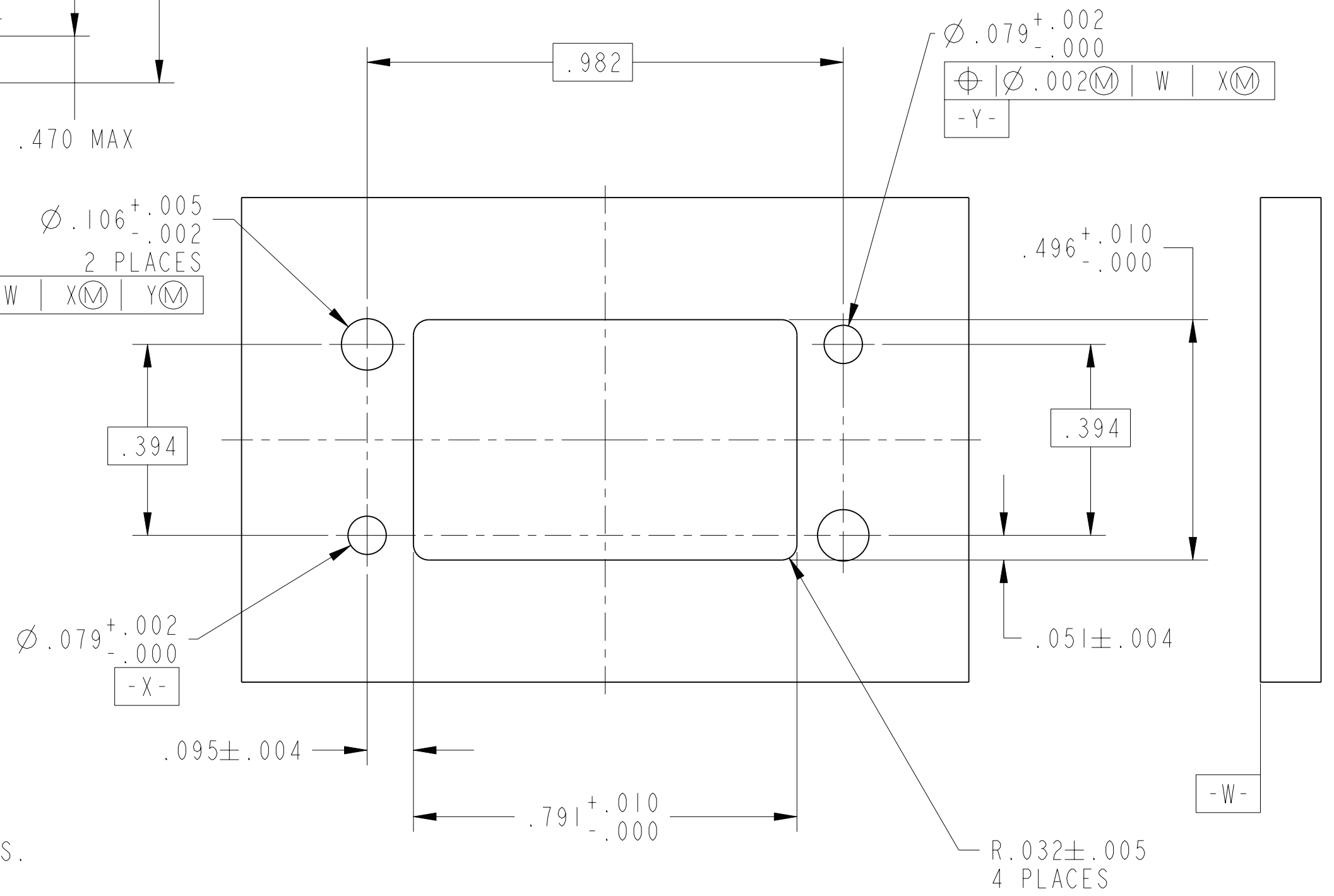
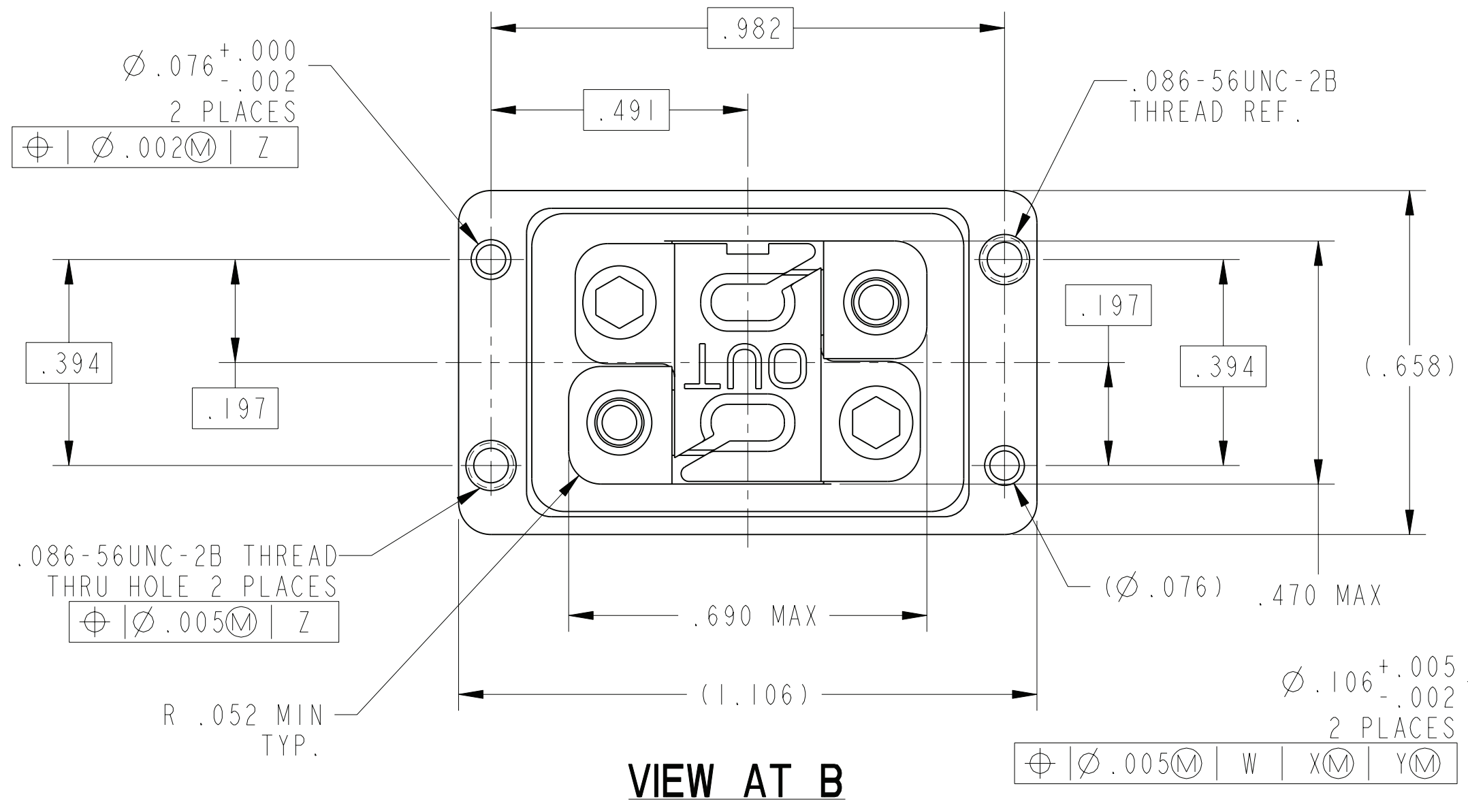
THE USE OF THIS DOCUMENT IS UNLIMITED. HOWEVER, DOCUMENTS REFERENCED HEREON MAY CONTAIN LIMITED RIGHTS DATA.

PRO/ENGINEER INFORMATION	
N/A	Pro/e Model Used:
N/A	10-504639-002.ASSEM
	Drawing Name:
	10-504639-002
	NEXT ASSEMBLY

SCALE 4.000

DOCUMENT NO. 10-504639-002
 SHEET 1 OF 3
 REV. B
 C
 B
 A

DOCUMENT NO. 10-504639-002
 SHEET 2 OF 3
 REV. B
 C
 B
 A
 FORMAT: C-0-L-E-Rev. B



SUGGESTED BACKPLANE BOARD CUTOUTS
 (CONNECTOR SIDE SHOWN)
 SCALE 4.000

7. FOR CONNECTOR INSTALLATION ILLUSTRATION AND MATED DIMENSIONS SEE SHEET 3.
6. FOR MATING MODULE CONNECTOR ASSEMBLY, SEE DRAWING 10-504637-004 AND OTHERS.
5. TIGHTEN CAPTIVE SCREWS TO 10-14 IN-OZ AFTER INSTALLING MT FERRULE (NOT INCLUDED).
4. FIBER OPTIC INSERT IS DESIGNED FOR MT TYPE FERRULES TERMINATED TO NON-STRENGTH MEMBERED RIBBON CABLE.
3. INDICATED CAVITIES WILL ACCOMODATE A STANDARD 12 CHANNEL MT FERRULE PER IEC 1754-5-4.
2. BLACK INK STAMP "AMPHENOL" PART NUMBER AND DATE CODE ON INDICATED SURFACE PER 9-3856-5. DATE CODE PER 9-3895. CHARACTERS TO BE .062±.020 HIGH. ADDITIONAL INFORMATION MAY BE REQUESTED BY PURCHASE ORDER.
1. PARTS ARE SHIPPED UNASSEMBLED.

THE USE OF THIS DOCUMENT IS UNLIMITED. HOWEVER, DOCUMENTS REFERENCED HEREON MAY CONTAIN LIMITED RIGHTS DATA.

SIZE C	CAGE CODE 77820	DOCUMENT NO. 10-504639-002	REV. B
SCALE: 3.0	REF. 10-504639-001	SHEET 2 OF 3	

DOCUMENT NO. 10-504639-002
 SHEET 2 OF 3
 REV. B

10-504639-002

SHEET 3 OF 3

REV. **B**

C

B

A

D

C

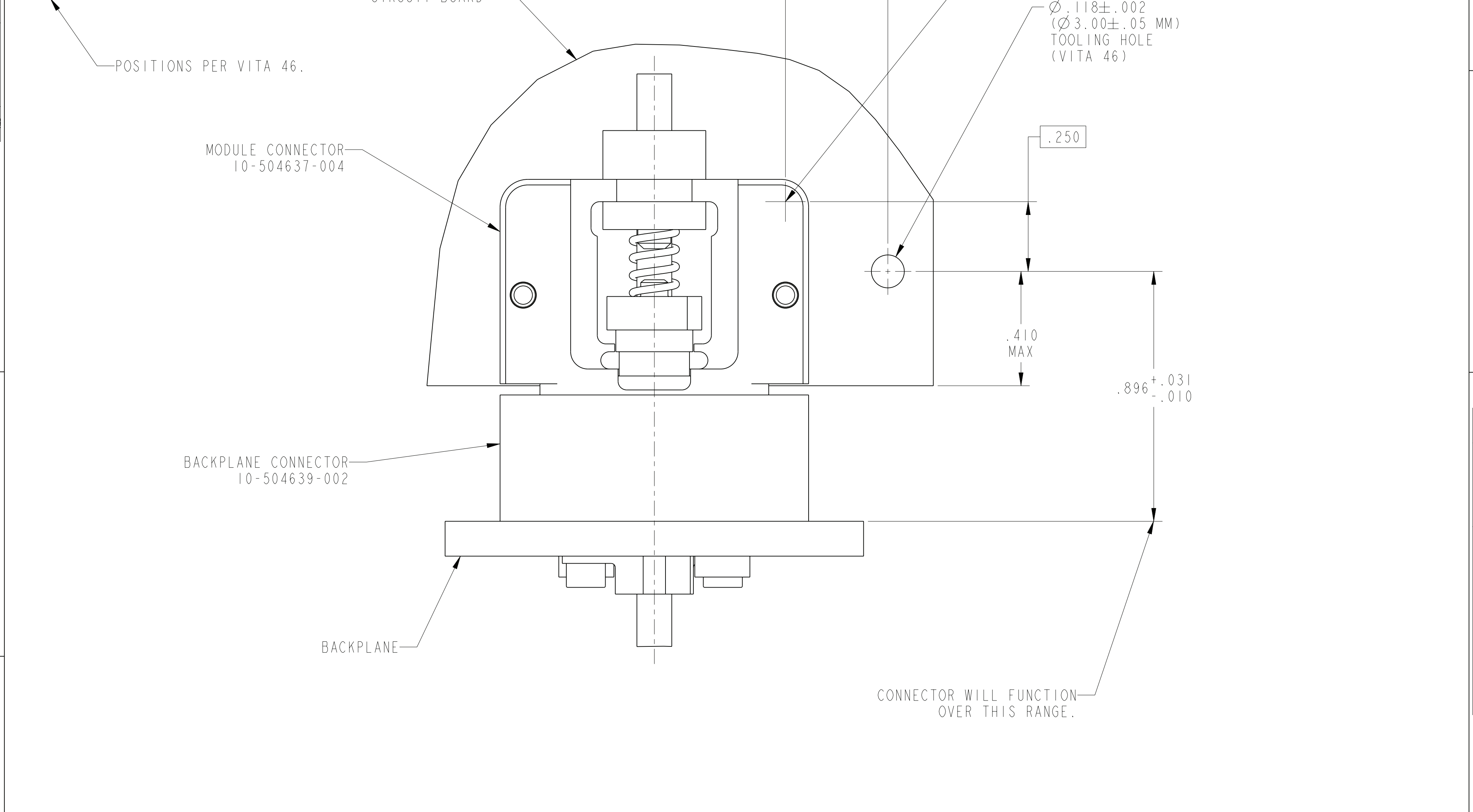
B

SHEET 3 OF 3

10-504639-002

A

CONNECTOR LOCATION ON MODULE PCB	
POSITION	DIM "X" MM (INCH)
P2	53.73 (2.1154)
P3	96.55 (3.8012)
P4	125.35 (4.9350)
P5	154.15 (6.0689)
P6	182.95 (7.2028)



CONNECTOR WILL FUNCTION OVER THIS RANGE.

CONNECTOR INSTALLATION ILLUSTRATION AND MATED DIMENSIONS

SCALE 4.000

THE USE OF THIS DOCUMENT IS UNLIMITED. HOWEVER, DOCUMENTS REFERENCED HEREON MAY CONTAIN LIMITED RIGHTS DATA.

SIZE C	CAGE CODE 77820	DOCUMENT NO. 10-504639-002	REV. B
SCALE: 3.0	REF. 10-504639-001	SHEET 3 OF 3	