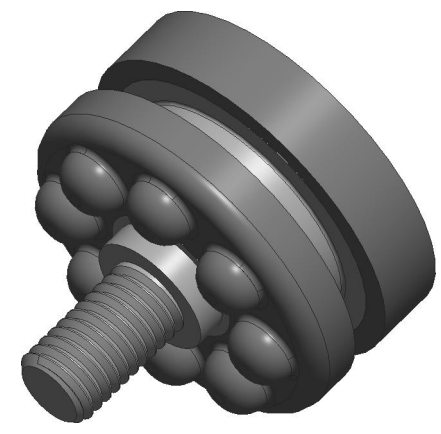
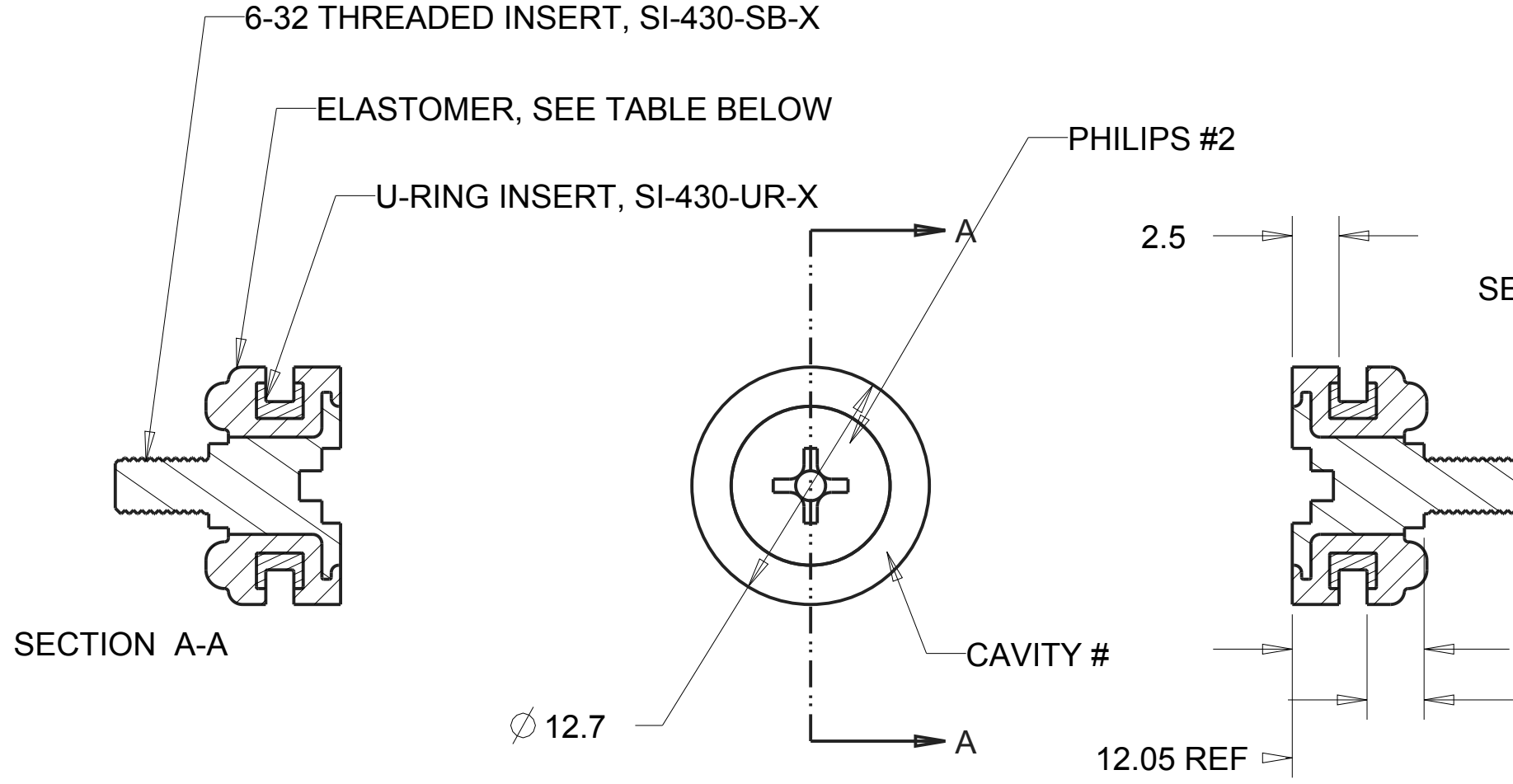




REVISIONS				
DRAWN	REV	DESCRIPTION	DATE	APPROVED
E-A-R	A-E	FOR REV A-E REFER TO OLDER FORMAT DRAWING "SI-430-X"		
CP	F	UPDATED FORMAT AND MATERIAL, REMOVED GD&T	6/12/17	



- NOTES:
1. CRITICAL DIMENSIONS ARE MARKED WITH "\*\*".
  2. CRITICAL DIMENSIONS SHALL HAVE CPK VALUE  $\geq 1.33$  WITH ONGOING SPC DATA REQUIRED.
  3. FOR THREADED INSERT: Zn COATING, Cr6 FREE, ASTM B-117 (72 HOURS)
  4. FOR ALL THREADED INSERT: CRITICAL DIM TOL:  $\pm 0.08\text{MM}$   
ALL OTHER DIM TOL:  $\pm 0.1\text{MM}$
  5. USE THE TOLERANCE TABLE ON THE LEFT FOR ELASTOMERS

AVAILABLE MATERIALS TABLE	
PART #	MATERIAL
SI-430-1	C-1002
SI-430-C8002	C-8002
SI-430-C8012	C-8012
SI-430-C6050	C-6050

RANGE	TOL
0 < DIM < 2	$\pm 0.15$
2 $\leq$ DIM < 25	$\pm 0.25$
25 $\leq$ DIM < 50	$\pm 0.4$
50 $\leq$ DIM	$\pm 0.6$

MATERIAL:	AEARO TECHNOLOGIES LLC * a 3M company		
SEE TABLE	TITLE: SI-430 GROMMET		
UNITS: MM	QUALITY CONTROL: MUST COMPLY WITH AEARO TECHNOLOGIES LLC SUPPLIER QUALITY MANUAL REQUIREMENTS	SIZE: B	ITEM CODE:
	NOTES: ANY FEATURE NOT DIMENSIONED IN PRINT MUST BE VISIBLY PRESENT, UTILIZE 3D CAD FOR CREATION	DWG NO.: SI-430-X	

1

2

3

4

D

C

B

A

D

C

B

A