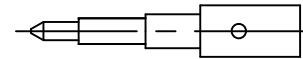
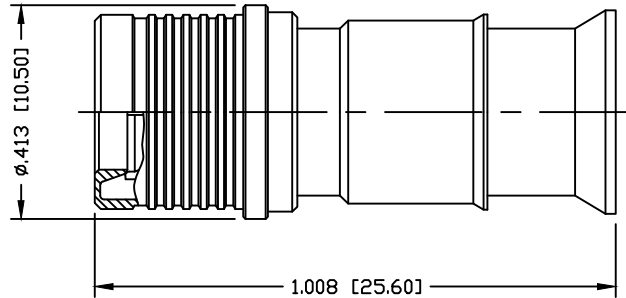


PART NO.

ROA-5000-HPL

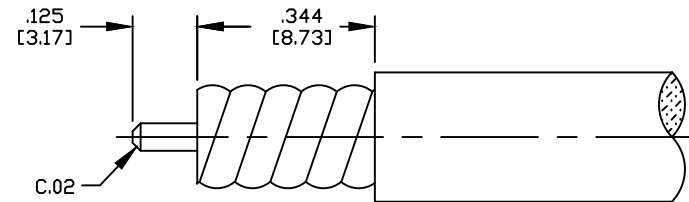
REV	DESCRIPTION	DWN	DATE	APPROVED
A	CHANGE PIN PLATING	CZS	11/04/19	JDMc



SOLDER PIN



REAR INSULATOR



RECOMMENDED STRIPING DIMENSIONS

USE OF CABLE TRIM TOOL IS RECOMMENDED

USE COMPATIBLE TRIM TOOL SUCH AS MCPT-1412

SPECIFICATIONS:

IMPEDANCE: 50 Ohms
 FREQUENCY RANGE: 0-3 GHz
 VSWR: ≤ 1.15
 3RD ORDER IM: $\leq 155\text{dBc}$ @ 700 MHz
 INSULATION RESISTANCE: 5k M Ohms min.
 TEMPERATURE RANGE: -40°C TO 165°C
 RoHS COMPLIANT

CABLE TYPE: SPP-250-LLPP

#	DESCRIPTION	QTY	MATERIAL	FINISH
6	GROUND RING	1	PHOS. BRONZE	WHITE BRONZE
5	SHELL	1	BRASS	WHITE BRONZE
4	PIN	1	BRASS	SILVER
3	INSULATOR	1	PTFE	---
2	INSULATOR	1	PTFE	---
1	BODY	1	BRASS	WHITE BRONZE

CUSTOMER
OUTLINE DRAWINGALL DIMENSIONS
ARE REFERENCE ONLYUNLESS OTHERWISE SPECIFIED:
DIMENSIONS ARE IN INCHES
AND [MILLIMETERS]

DRAWN	C. ZUNIGA	11/04/19
CHECKED		
ORJ DRAWN	C. ZUNIGA	06/08/16

**RoHS
COMPLIANT**

PROPRIETARY AND CONFIDENTIAL
 THIS DRAWING CONTAINS
 INFORMATION PROPRIETARY TO
 RF INDUSTRIES, ANY
 UNAUTHORIZED USE OF THIS
 DRAWING IS EXPRESSLY
 PROHIBITED WITHOUT WRITTEN
 PERMISSION FROM RF
 INDUSTRIES. ANY VIOLATION IS
 PUNISHABLE UNDER U.S.
 COPYRIGHT LAWS.

RFconnectors

7610 MIRAMAR RD.
 SAN DIEGO, CA 92126
 (858) 549-6340
 (858) 549-6345 FAX

QMA PLUG

FOR .250" SPP-250-LLPL CABLE

SIZE	CABLE GROUP	DWG NO.	REVISION
A	N/A	ROA-5000-HPL	A
SCALE:	ENGINEERING ID:	SHEET 1 OF 1	
NTS	000000		