



SPECIFICATIONS

| Model | Stroke mm | Max Energy Absorption J(kgf·m) | Max Equiv. Mass kg(kgf) | Range of Impact Rate m/s | Orifice Type |
|----------------|-----------|--------------------------------|-------------------------|--------------------------|-------------------------------|
| FWM-S2540LBD-C | 40 | 63.7(6.5) | 350(350) | 0.3~2 | Multiple-varying orifice type |

COMMON SPECIFICATIONS

| Max Drag N(kgf) | Max Cycle Rate cycle/min | Max Energy Absorption per min. J/min(kgf·m/min) | Extension Force N(kgf) | Operating Temp. C° | Mass g |
|-----------------|--------------------------|---|------------------------|--------------------|--------|
| 3,920(400) | 60 | 637(65) | 71.4(7.29) or lower | -5~70 | 475.1 |

PRECAUTIONS FOR USE

- Do not use this product in places where it may come in contact with oil as it does not have a liquid-proof structure.
- Please contact our sales department when the use of optional parts is planned.
- Although the dimensions are identical to those of the FA series standard products (adjustable), the FWM-S2016 series has a longer overall length.

ADJUSTMENT METHOD

- Please peruse the operation manual carefully before use.
- Do not operate without sufficient mounting strength.
- Do not operate without an external stopper.
- Note that Products specification might be changed without notice.

ABSORPTION CHARACTERISTICS

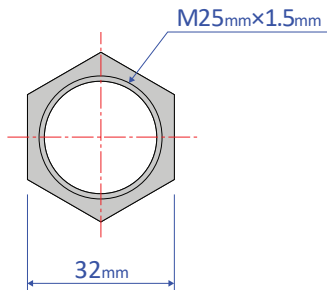
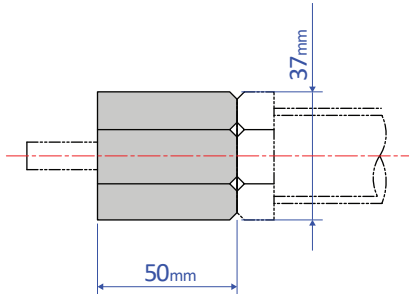
| | | |
|--------------|---|--------------------------------|
| Orifice type | Single-orifice type | Absorption characteristics |
| Model number | FWM-S2540LBD Series | |
| Application | For medium speed, in particular with a pneumatic cylinder | |

OPTIONAL PARTS

Stopper nut OP-020LB

- Adjust so that it stops 1 mm before the stroke end, and fasten with the main unit's nut until secured.

OP-020LB



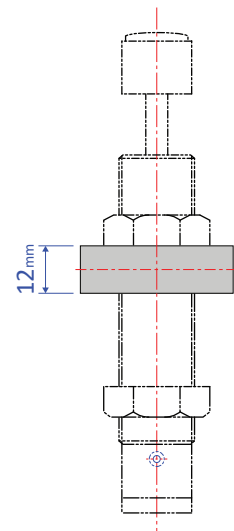
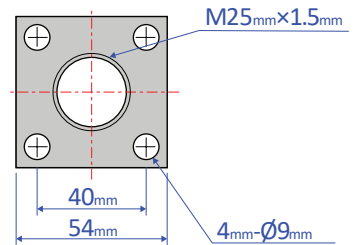
Mass 153g

Note: When attaching, make sure that the side without a bearing chamfer is the impact surface.

Standard nuts are sold separately as well - M25 Nut

Square flange OP-040GB

- Once the attachment site is determined, use the main unit's nut to securely fasten in place.



Mass 206g