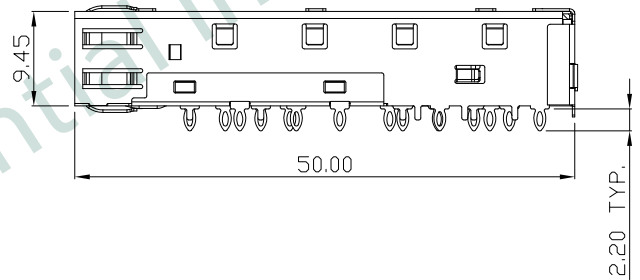
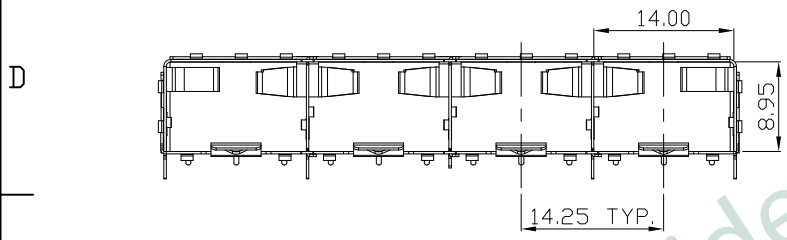
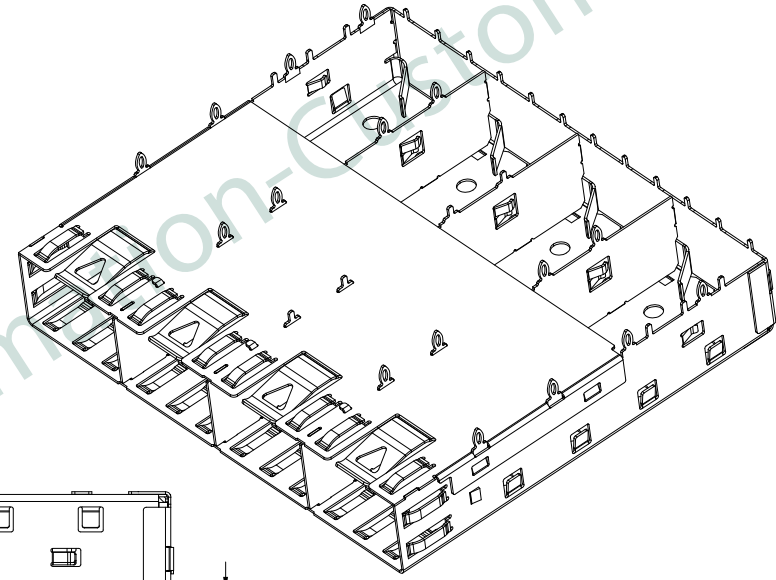
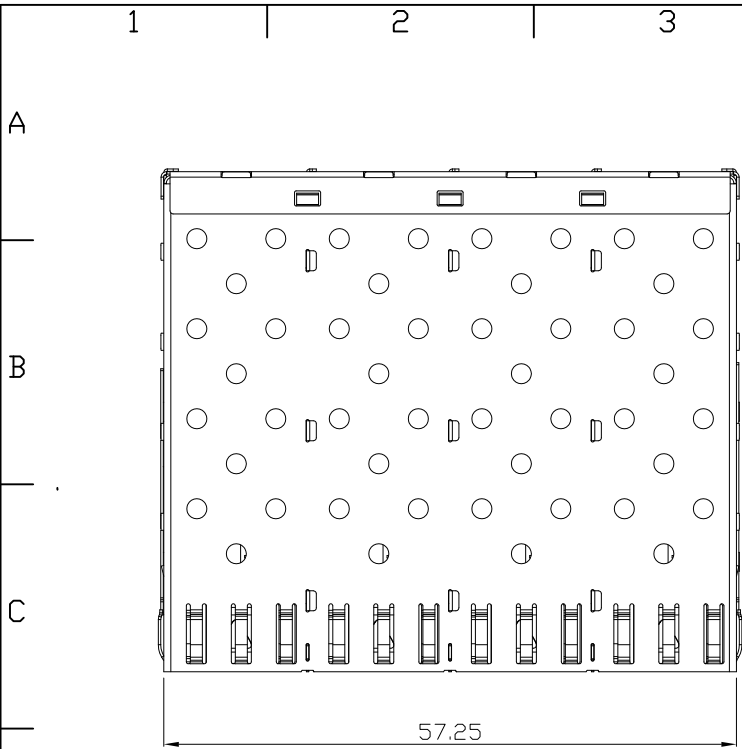
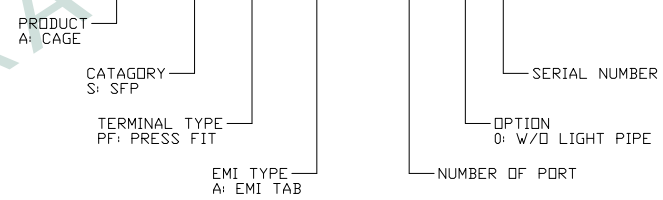


REV.	DATE	DESCRIPTION
01	Jul. 05, '18	1st RELEASE

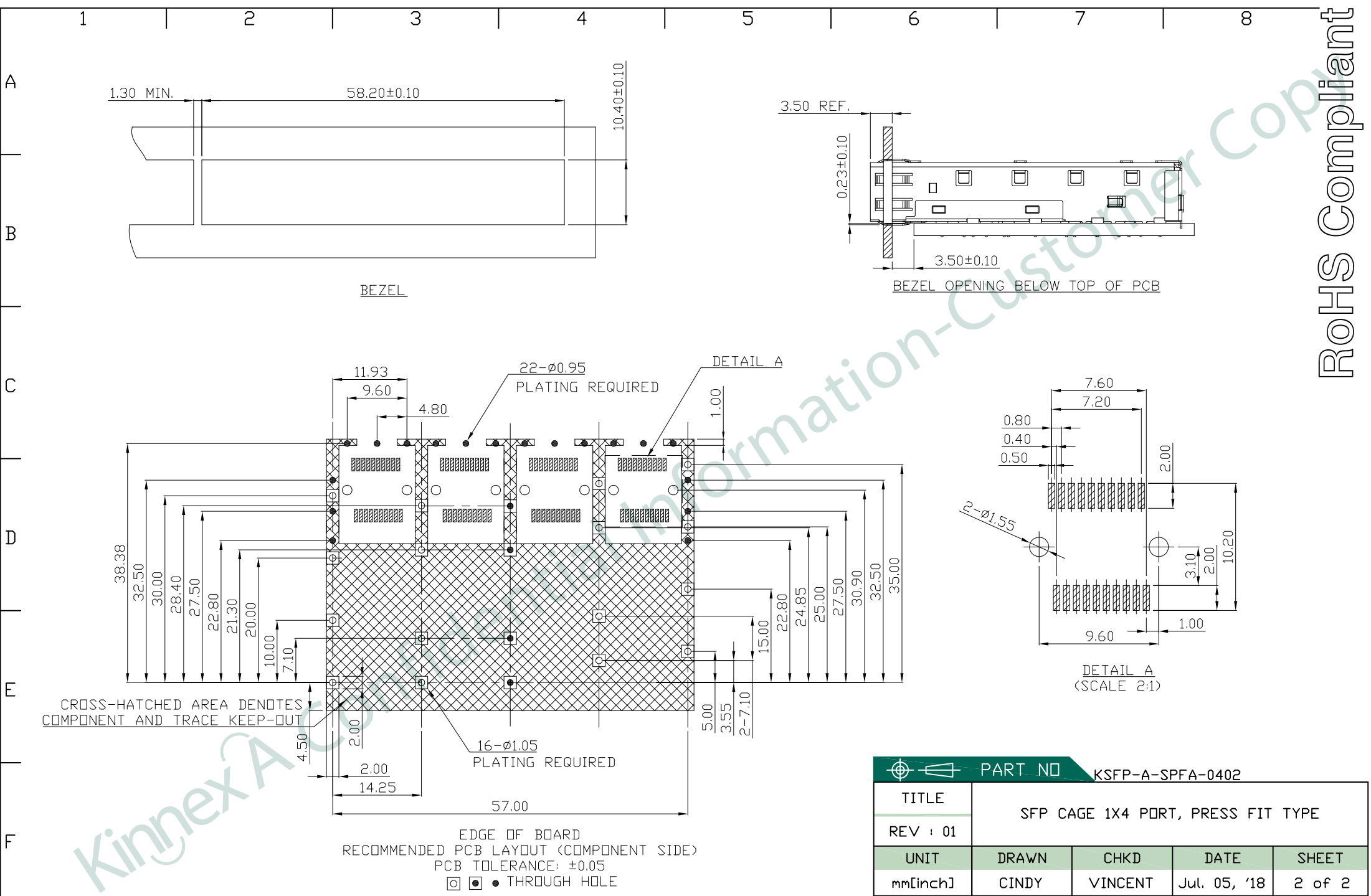
NOTES:  
 1. MATERIALS: T=0.25mm, COPPER ALLOY  
 2. UNSPECIFIED TOLERANCE: .XX ±0.25



KSFP-A-SPFA-0402



PART NO		KSFP-A-SPFA-0402		
TITLE	SFP CAGE 1X4 PORT, PRESS FIT TYPE			
REV : 01				
UNIT	DRAWN	CHKD	DATE	SHEET
mm[inch]	CINDY	VINCENT	Jul. 05, '18	1 of 2



PART NO		KSFP-A-SPFA-0402		
TITLE		SFP CAGE 1X4 PORT, PRESS FIT TYPE		
REV : 01				
UNIT	DRAWN	CHKD	DATE	SHEET
mm[inch]	CINDY	VINCENT	Jul. 05, '18	2 of 2