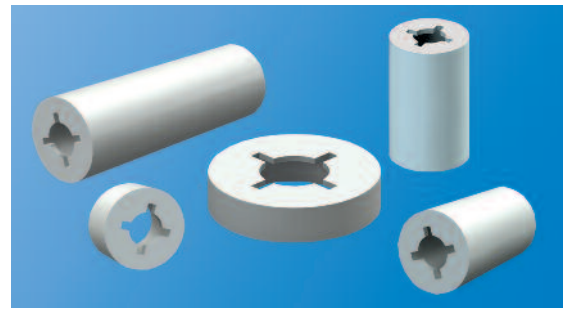
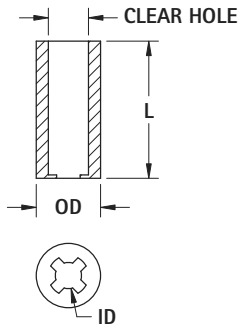


NYLON RETAINING SPACERS

Similar to our standard spacers, but with a specially configured I.D. designed to grip the outside of the screw shank. The spacer slides on the screw easily, but is retained on the screw. For use in applications requiring pre-assembly of the screw and spacer, to reduce final assembly cost.



MATERIAL:

Nylon 6/6, UL Rated 94V-2

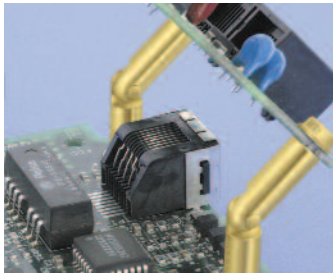
CAT. NO.	.156 (3.9) Clear Hole for #4 Screw		
	LENGTH	O.D.	I.D.
2341	.125 (3.2)	.250 (6.4)	.102 (2.6)
2342	.250 (6.4)		
2343	.375 (9.5)		
2344	.500 (12.7)		
2345	.625 (15.9)		
2346	.750 (19.1)		
2347	.875 (22.2)		
2348	1.00 (25.4)		

CAT. NO.	.198 (5.0) Clear Hole for #6 Screw		
	LENGTH	O.D.	I.D.
2361	.125 (3.2)	.312 (7.9)	.128 (3.3)
2362	.250 (6.4)		
2363	.375 (9.5)		
2364	.500 (12.7)		
2365	.625 (15.9)		
2366	.750 (19.1)		
2367	.875 (22.2)		
2368	1.00 (25.4)		

CAT. NO.	.240 (6.1) Clear Hole for #8 Screw		
	LENGTH	O.D.	I.D.
2381	.125 (3.2)	.375 (9.5)	.152 (3.8)
2382	.250 (6.4)		
2383	.375 (9.5)		
2384	.500 (12.7)		
2385	.625 (15.9)		
2386	.750 (19.1)		
2387	.875 (22.2)		
2388	1.00 (25.4)		

CAT. NO.	.277 (7.0) Clear Hole for #10 Screw		
	LENGTH	O.D.	I.D.
2391	.125 (3.2)	.500 (12.7)	.177 (4.5)
2392	.250 (6.4)		
2393	.375 (9.5)		
2394	.500 (12.7)		
2395	.625 (15.9)		
2396	.750 (19.1)		
2397	.875 (22.2)		
2398	1.00 (25.4)		

HINGED STANDOFFS



- Applications unlimited
- Time saving
- Space saving
- Interconnect circuits or services without danger of shorting

MATERIAL:

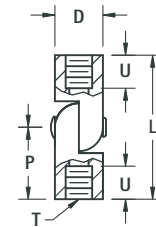
Brass, ASTM-B16. Zinc Plate and Yellow Chromate



FEMALE/FEMALE



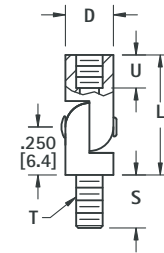
CAT. NO.	L LENGTH	U	P	D DIAMETER	T THREAD
351	.750 (19.1)	.172 (4.4)	.375 (9.5)	.187 (4.7)	4-40
352	1.000 (25.4)	.250 (6.4)	.625 (15.9)		
330	1.250 (31.8)	.250 (6.4)	.625 (15.9)		
353	.750 (19.1)	.172 (4.4)	.375 (9.5)	.250 (6.4)	6-32
354	1.000 (25.4)	.250 (6.4)	.625 (15.9)		
331	1.250 (31.8)	.250 (6.4)	.625 (15.9)		
355	.750 (19.1)	.172 (4.4)	.375 (9.5)	.250 (6.4)	8-32
356	1.000 (25.4)	.250 (6.4)	.625 (15.9)		
332	1.250 (31.8)	.250 (6.4)	.625 (15.9)		



MALE/FEMALE



CAT. NO.	L LENGTH	S	U	D DIAMETER	T THREAD
333	.625 (15.9)	.250 (6.4)	.172 (4.4)	.187 (4.7)	4-40
334	.875 (22.2)	.250 (6.4)	.250 (6.4)		
335	.625 (15.9)	.312 (7.9)	.172 (4.4)		
336	.875 (22.2)	.312 (7.9)	.250 (6.4)	.250 (6.4)	6-32
337	.625 (15.9)	.312 (7.9)	.172 (4.4)		
338	.875 (22.2)	.312 (7.9)	.250 (6.4)		



MALE/MALE



CAT. NO.	L LENGTH	S	P	D DIAMETER	T THREAD
357	.500 (12.2)	.250 (6.4)	.250 (6.4)	.187 (4.7)	4-40
358	.500 (12.2)	.312 (7.9)	.250 (6.4)	.250 (6.4)	6-32
359	.500 (12.2)	.312 (7.9)	.250 (6.4)	.250 (6.4)	8-32

