



PIR Motion Sensor - Large Lens version

SKU 101020060

PIR (Passive Infrared Detection) are used to detect motion of human movement. This version has a large lens which can support long range and wide angle. 2.54mm standard connector is easy to fix it anywhere.

Features:

- Long range
- Wide angle
- Low consumption
- DC 3.0-5.5V power supplier

Specifications

- Input Voltage: DC3.0-5.5V
- Current: 100uA(max)
- Output signal: 0,VCC (Output high when motion detected)
- Sentry Angle: 120°
- Connector:3Pin 2.54mm pitch
- Size : L36*W26*H21(mm)

Technical details

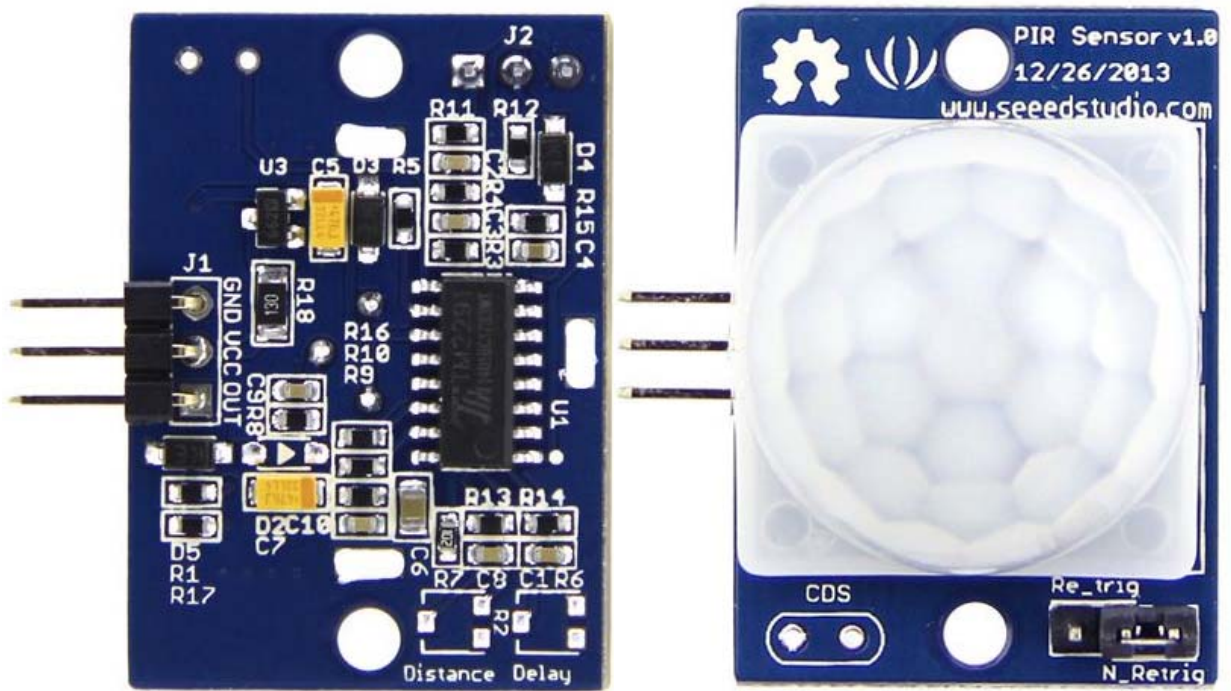
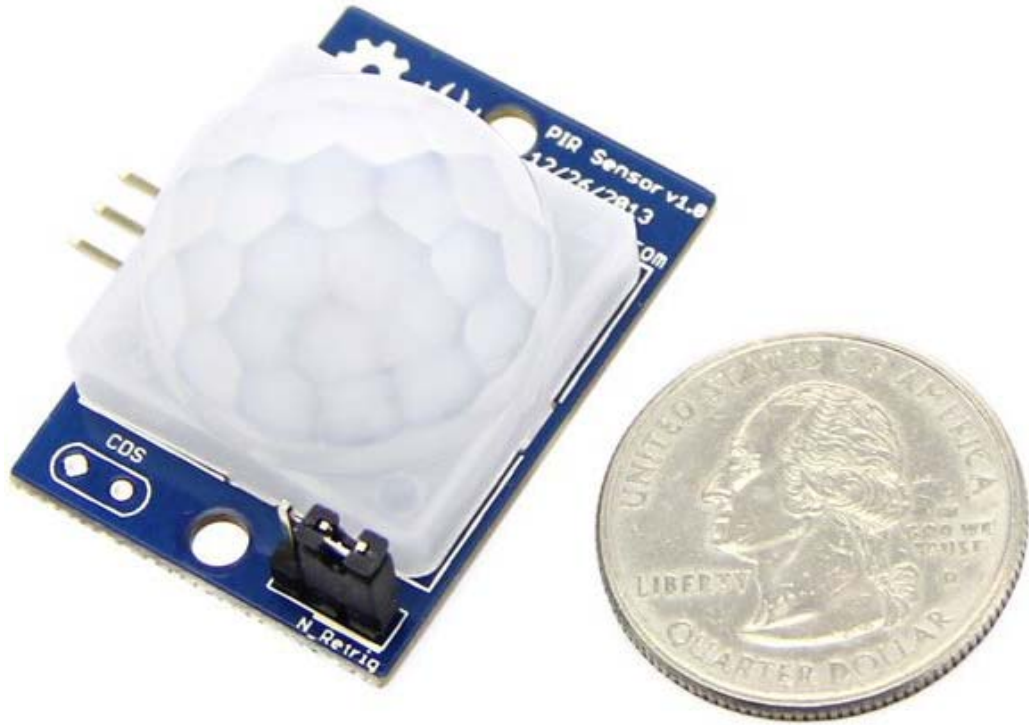
Dimensions	45mm x35mm x19.5mm
Weight	G.W 6.5g
Battery	Exclude

Part List

PIR Motion Sensor - Large Lens version	1
--	---

ECCN/HTS

ECCN	6A002.a.3.f
HSCODE	9031900090
USHSCODE	9027106000
UPC	841454105046
ROHS	1



<https://www.seedstudio.com/PIR-Motion-Sensor-Large-Lens-version-p-1976.html/6-25-19>