

MATED VIEW
10-WAFER CONNECTOR SHOWN

NOTES:

- MATERIALS:
RETAINER HOUSING/WAFER PLASTIC - LIQUID CRYSTAL POLYMER (LCP),
GLASS FILLED, UL94 V-0. COLOR: BLACK (30µin Au) OR GRAY (50µin Au)
TERMINALS - HIGH PERFORMANCE COPPER ALLOY
- FINISHES:
TERMINAL - SELECTIVE GOLD (Au) IN CONTACT AREA,
SELECTIVE MATTE TIN (Sn) ON PCB TAILS,
NICKEL (Ni) UNDERPLATE OVERALL
- PRODUCT SPECIFICATION: PS-74031-999
- PACKAGING SPECIFICATION: PK-70873-0750
- MATES WITH VHDM 8-ROW BACKPLANE HEADER SERIES NO. 74060
- THESE PARTS CONFORM TO MOLEX COSMETIC SPECIFICATION PS-45499-002 CLASS B.

MATERIAL NUMBER ASSIGNMENT

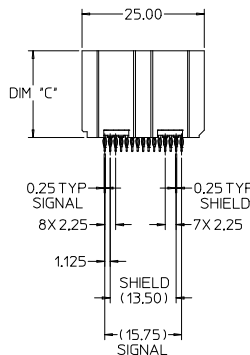
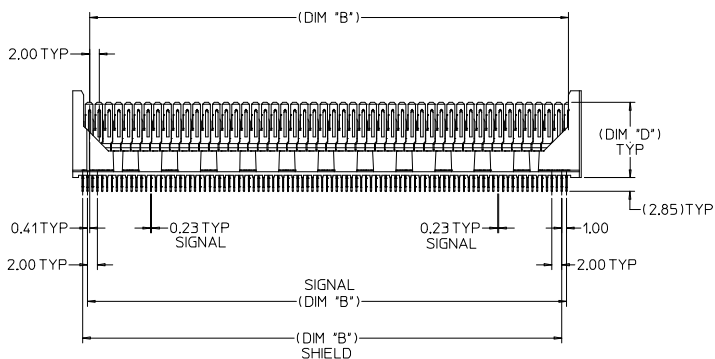
75117 - * * * *

GOLD THICKNESS/TAIL PLATING

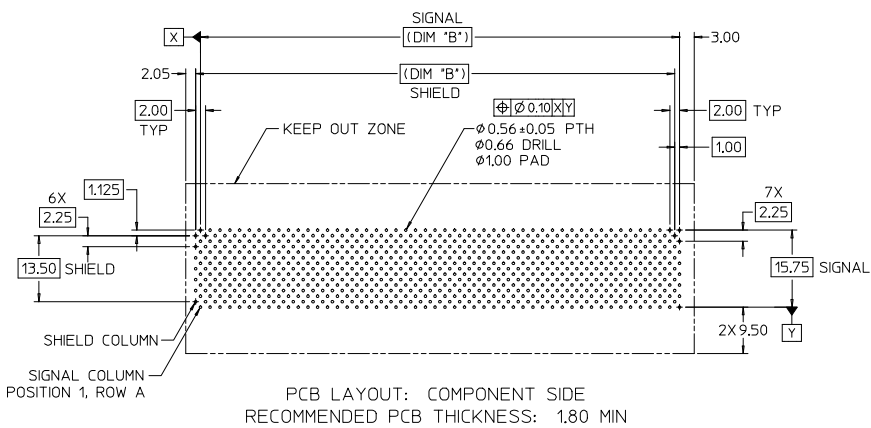
- 0 = 30µn / MATTE TIN (FORMERLY TIN/LEAD)
- 1 = 50µn / MATTE TIN (FORMERLY TIN/LEAD)
- 7 = 10µn/MATTE TIN (MAPS)
- 8 = 50µn/MATTE TIN
- 9 = 30µn/MATTE TIN

STACK HEIGHT
DIM "H"
18 = 18mm
* 28 = 28mm

* CONSULT FACTORY FOR AVAILABILITY
NUMBER OF WAFERS
0 = 50
1 = 10
2 = 25



LEAD FREE
PLATING



| MATERIAL NUMBER | NUMBER OF WAFERS | DIM 'A' | DIM 'B' | DIM 'C' | DIM 'D' | DIM 'H' STACK HEIGHT |
|-----------------|------------------|---------|---------|---------|---------|----------------------|
| *75117-*228 | 25 | 54.05 | 48.00 | 27.74 | 25.36 | 28 |
| *75117-*128 | 10 | 24.05 | 18.00 | | | |
| *75117-*028 | 50 | 104.05 | 98.00 | 17.74 | 15.36 | 18 |
| 75117-*218 | 25 | 54.05 | 48.00 | | | |
| 75117-*118 | 10 | 24.05 | 18.00 | | | |
| 75117-*018 | 50 | 104.05 | 98.00 | | | |

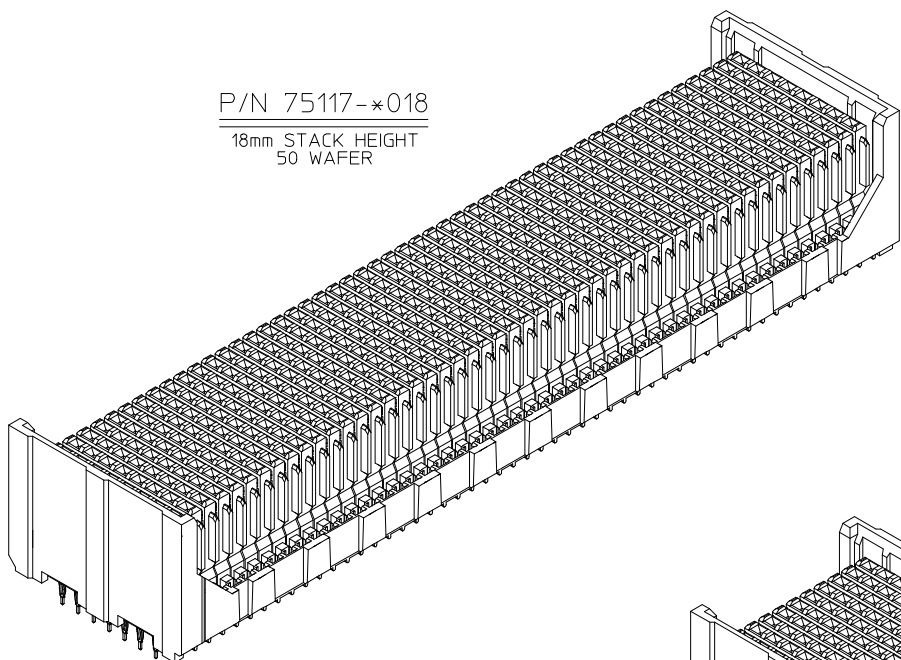
* CONSULT FACTORY FOR AVAILABILITY

| | | | | | | | |
|---|--------------------------------------|--|--|--|---|--|------------------|
| L.F. CONVERSION /MAPS EC NO: UCP2013-3702 DRAWN BY: DRYNWRHPPLE CHECKED BY: CHYKHOLFEE APPROVED BY: APPRSHILLER 2013/02/07 2013/02/07 2014/02/05 | QUALITY SYMBOLS ∇=0 ∇=0 ∇=0 | GENERAL TOLERANCES (UNLESS SPECIFIED) DIMENSIONS IN INCH 4 PLACES ±--- ±--- 3 PLACES ±--- ±--- 2 PLACES ±0.13 ±--- 1 PLACE ±0.25 ±--- 0 PLACE ± ± ANGULAR ± 2 ° DRAFT WHERE APPLICABLE MUST REMAIN WITHIN DIMENSIONS | DIMENSION STYLE MM ONLY DRAWN BY: SREED DATE: 2013/02/27 CHECKED BY: J.B. INGHAM DATE: 2013/02/27 APPROVED BY: C.B. XLER DATE: 2013/02/27 | SCALE: 2:1 DESIGN UNITS: METRIC THIRD ANGLE PROJECTION | TITLE: VHDM 8-ROW DAUGHTERCARD STACKER CONNECTOR SALES DRAWING molex | MATERIAL NO. SD-75117-001 DOCUMENT NO. SD-75117-001 | SHEET NO. 1 OF 2 |
| | | | | | | | |

20 19 18 17 16 15 14 13 12 11 10 9 8 7 6 5 4 3 2 1

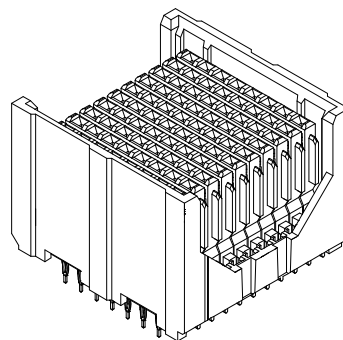
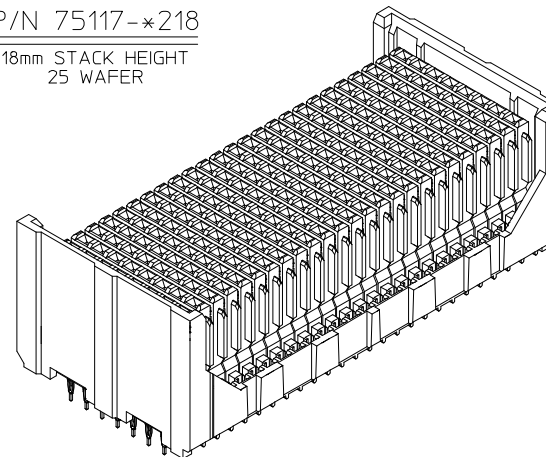
P/N 75117-*018

18mm STACK HEIGHT
50 WAFER



P/N 75117-*218

18mm STACK HEIGHT
25 WAFER

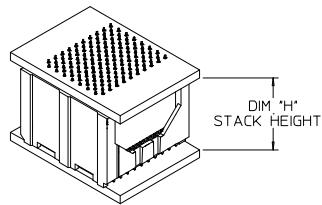
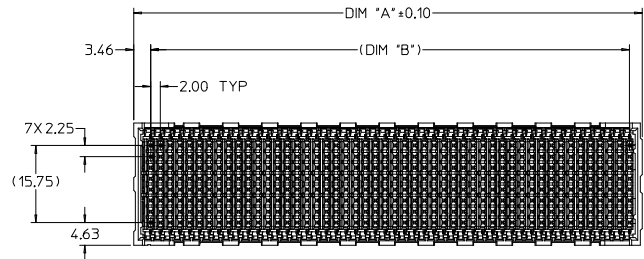


P/N 75117-*118

18mm STACK HEIGHT
10 WAFER

| | | | | | | |
|---|-----------------|--|--|---|--------------|------------------------|
| LEAD FREE CONVERSION IEC NO: UCP2013-3702 DRAWN BY: CHYKHOFFLE 2013/02/07 CHECKED BY: APPR:SMILLER 2014/02/05 DATE: 2014/02/05 | QUALITY SYMBOLS | GENERAL TOLERANCES (UNLESS SPECIFIED) | DIMENSION STYLE | SCALE | DESIGN UNITS | THIRD ANGLE PROJECTION |
| | ▽=0 | 4 PLACES ± mm ± INCH | MM ONLY | 4:1 | METRIC | |
| | ▽=0 | 3 PLACES ± 0.13 ± --- | | | | |
| | ▽=0 | 2 PLACES ± 0.25 ± --- | | | | |
| | | ANGULAR ± 2 ° | DRAWN BY: SREED DATE: 2003/02/27 | TITLE: VHDM 8-ROW DAUGHTERCARD STACKER CONNECTOR SALES DRAWING | | |
| | | DRAFT WHERE APPLICABLE MUST REMAIN WITHIN DIMENSIONS | CHECKED BY: JB INGHAM DATE: 2003/02/27 | DOCUMENT NO. SD-75117-001 | | |
| | | | APPROVED BY: CB IXLER DATE: 2003/02/27 | SHEET NO. 2 OF 2 | | |
| | | | MATERIAL NO. SEE CHART | THIS DRAWING CONTAINS INFORMATION THAT IS PROPRIETARY TO MOLEX INCORPORATED AND SHOULD NOT BE USED WITHOUT WRITTEN PERMISSION | | |

19 18 17 16 15 14 13 12 11 10 9 8 7 6 5 4 3 2 1



MATED VIEW
10-WAFER CONNECTOR SHOWN

NOTES:

- MATERIALS:
RETAINER HOUSING/WAFER PLASTIC - LIQUID CRYSTAL POLYMER (LCP),
GLASS FILLED, UL94 V-0. COLOR: BLACK (30µin Au) OR GRAY (50µin Au)
TERMINALS - HIGH PERFORMANCE COPPER ALLOY
- FINISHES:
TERMINAL - SELECTIVE GOLD (Au) IN CONTACT AREA,
SELECTIVE MATTE TIN (Sn) ON PCB TAILS,
NICKEL (Ni) UNDERPLATE OVERALL
- PRODUCT SPECIFICATION: PS-74031-999
- PACKAGING SPECIFICATION: PK-70873-0750
- MATES WITH VHDM 8-ROW BACKPLANE HEADER SERIES NO. 74060
- THESE PARTS CONFORM TO MOLEX COSMETIC SPECIFICATION PS-45499-002 CLASS B.

MATERIAL NUMBER ASSIGNMENT

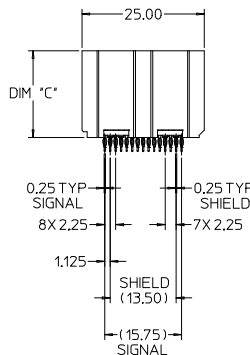
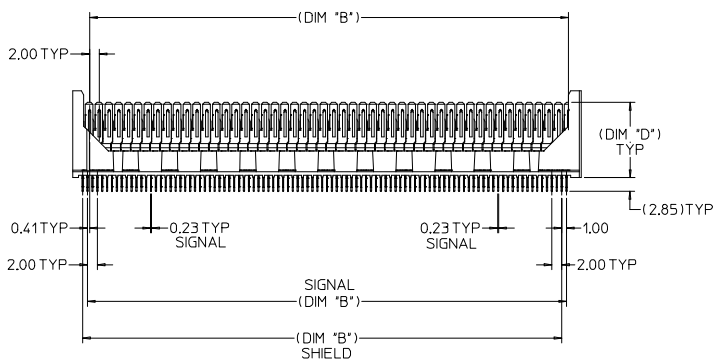
75117 - * * * *

GOLD THICKNESS/TAIL PLATING

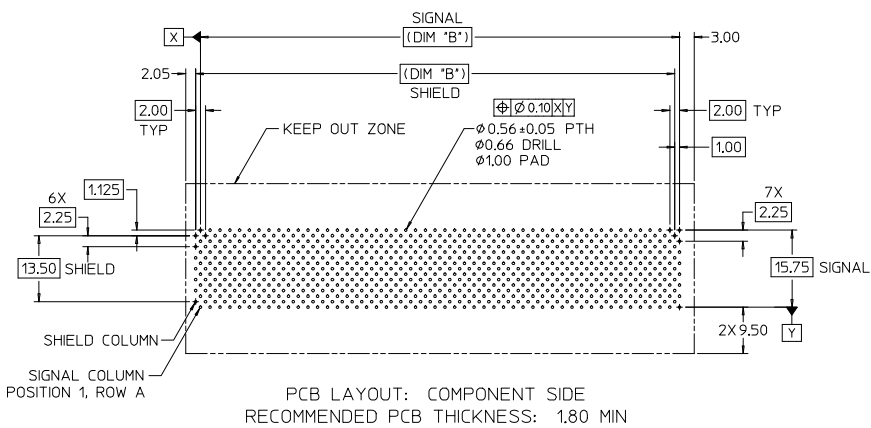
- 0 = 30µn / MATTE TIN (FORMERLY TIN/LEAD)
- 1 = 50µn / MATTE TIN (FORMERLY TIN/LEAD)
- 7 = 10µn/MATTE TIN (MAPS)
- 8 = 50µn/MATTE TIN
- 9 = 30µn/MATTE TIN

STACK HEIGHT
DIM "H"
18 = 18mm
* 28 = 28mm

* CONSULT FACTORY FOR AVAILABILITY
NUMBER OF WAFERS
0 = 50
1 = 10
2 = 25



LEAD FREE
PLATING



| MATERIAL NUMBER | NUMBER OF WAFERS | DIM 'A' | DIM 'B' | DIM 'C' | DIM 'D' | DIM 'H' STACK HEIGHT |
|-----------------|------------------|---------|---------|---------|---------|----------------------|
| *75117-*228 | 25 | 54.05 | 48.00 | 27.74 | 25.36 | 28 |
| *75117-*128 | 10 | 24.05 | 18.00 | | | |
| *75117-*028 | 50 | 104.05 | 98.00 | 17.74 | 15.36 | 18 |
| 75117-*218 | 25 | 54.05 | 48.00 | | | |
| 75117-*118 | 10 | 24.05 | 18.00 | | | |
| 75117-*018 | 50 | 104.05 | 98.00 | | | |

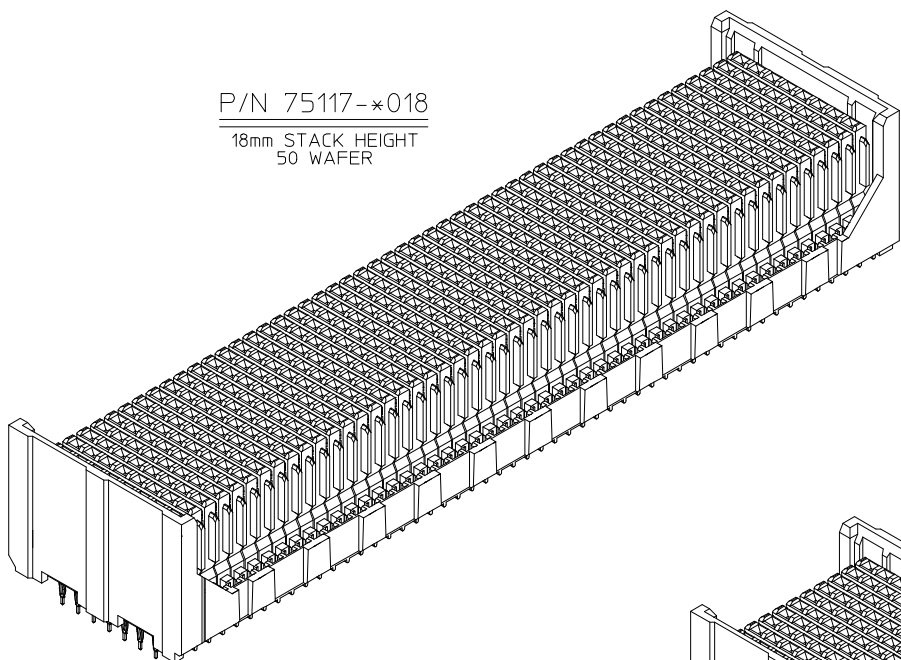
* CONSULT FACTORY FOR AVAILABILITY

| | | | | | | | |
|---|-----------------|--|---|---------------------------|--|------------------------|--|
| L.F. CONVERSION /MAPS E.C. NO: UCP2013-3702 DRAWN BY: DRYNWRHPPLE CHECKED BY: CHYKHMOLEE APPROVED BY: APPRSHILLER 2013/02/07 2013/02/07 2014/02/05 | QUALITY SYMBOLS | GENERAL TOLERANCES (UNLESS SPECIFIED) | DIMENSION STYLE | SCALE | DESIGN UNITS | THIRD ANGLE PROJECTION | |
| | ▽=0 | mm INCH | MM ONLY | 2:1 | METRIC | | |
| | ▽=0 | 4 PLACES ± --- ± --- | DRAWN BY: SREED | DATE: 2013/02/27 | TITLE: VHDM 8-ROW DAUGHTERCARD STACKER CONNECTOR SALES DRAWING | | |
| | ▽=0 | 3 PLACES ± --- ± --- 2 PLACES ± 0.13 ± --- 1 PLACE ± 0.25 ± --- 0 PLACE ± ± | CHECKED BY: JB INGHAM | DATE: 2013/02/27 | moLEX | | |
| | ANGULAR ± 2 ° | DRAFT WHERE APPLICABLE MUST REMAIN WITHIN DIMENSIONS | MATERIAL NO. SEE CHART | DOCUMENT NO. SD-75117-001 | SHEET NO. 1 OF 2 | | |
| | | | THIS DRAWING CONTAINS INFORMATION THAT IS PROPRIETARY TO MOLEX INCORPORATED AND SHOULD NOT BE USED WITHOUT WRITTEN PERMISSION | | | | |

20 19 18 17 16 15 14 13 12 11 10 9 8 7 6 5 4 3 2 1

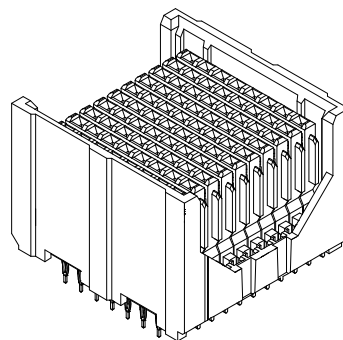
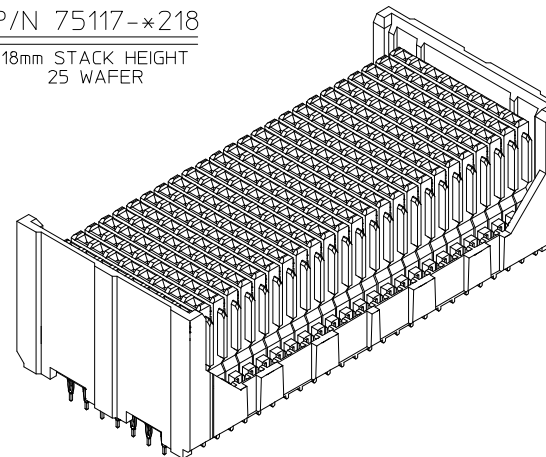
P/N 75117-*018

18mm STACK HEIGHT
50 WAFER



P/N 75117-*218

18mm STACK HEIGHT
25 WAFER



P/N 75117-*118

18mm STACK HEIGHT
10 WAFER

| | | | | | | |
|--|-----------------|--|--|---|--------------|------------------------|
| LEAD FREE CONVERSION IEC NO: UCP2013-3702 DRAWN BY: CHYKHOFFLE 2013/02/07 CHECKED BY: APPR:SMILLER 2014/02/05 DATE: | QUALITY SYMBOLS | GENERAL TOLERANCES (UNLESS SPECIFIED) | DIMENSION STYLE | SCALE | DESIGN UNITS | THIRD ANGLE PROJECTION |
| | ▽=0 | 4 PLACES ± mm ± INCH | MM ONLY | 4:1 | METRIC | |
| | ▽=0 | 3 PLACES ± 0.13 ± --- | | | | |
| | ▽=0 | 2 PLACES ± 0.25 ± --- | | | | |
| | | ANGULAR ± 2 ° | DRAWN BY: SREED DATE: 2003/02/27 | TITLE: VHDM 8-ROW DAUGHTERCARD STACKER CONNECTOR SALES DRAWING | | |
| | | DRAFT WHERE APPLICABLE MUST REMAIN WITHIN DIMENSIONS | CHECKED BY: JB INGHAM DATE: 2003/02/27 | DOCUMENT NO. SD-75117-001 | | |
| | | | APPROVED BY: CB IXLER DATE: 2003/02/27 | SHEET NO. 2 OF 2 | | |
| | | | MATERIAL NO. SEE CHART | THIS DRAWING CONTAINS INFORMATION THAT IS PROPRIETARY TO MOLEX INCORPORATED AND SHOULD NOT BE USED WITHOUT WRITTEN PERMISSION | | |

19 18 17 16 15 14 13 12 11 10 9 8 7 6 5 4 3 2 1