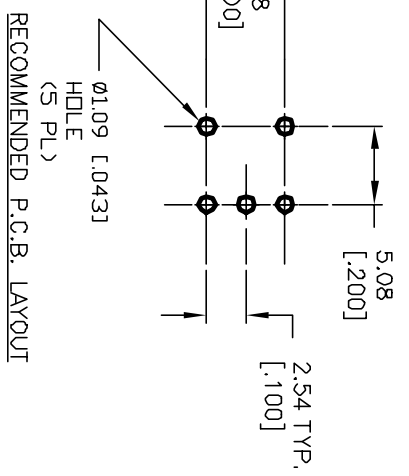
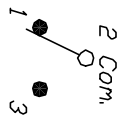
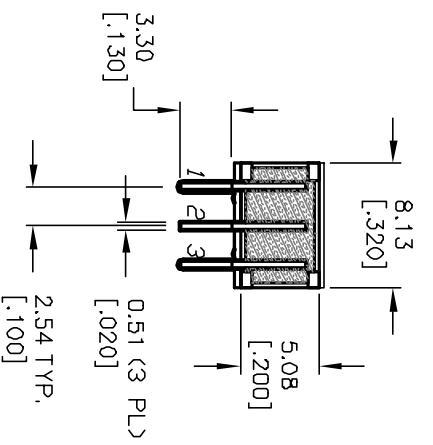
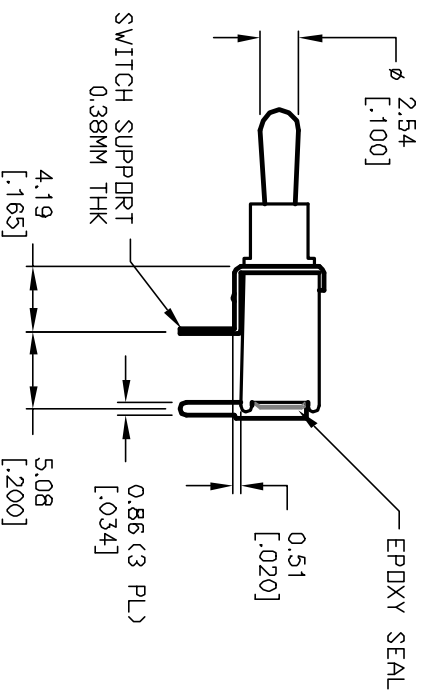
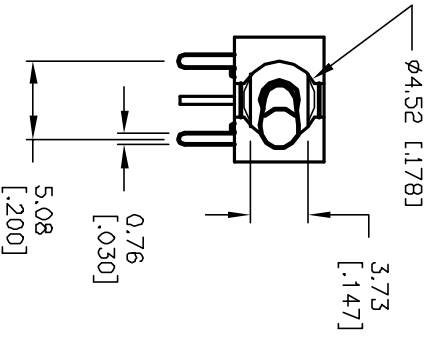


E-SWITCH LOGO



RECOMMENDED P.C.B. LAYOUT



CIRCUIT: SPDT

CONTACT CONFIGURATION

SWITCH FUNCTION		
PDS. 1	PDS. 2	PDS. 3
<DN>	OFF	<DN>
2-3	OPEN	2-1

< >=Mandatory

- NOTES:
1. ALL DIMENSIONS IN MM [INCH]
 2. GENERAL TOLERANCE: X.X=±0.4 X.XX=±0.25
 3. TERM. NOS. FOR REF. ONLY
 4. RATING: 0.4(VA) max. @20V max. (AC or DC)
 5. FIXED TERM. & MOVING CONTACT: COPPER ALLOY w/GOLD plate over Nickel plate
 6. ELECTRICAL LIFE: 50,000 make-and-break cycles at full load.
 7. INSULATION RESISTANCE: 1000M ohm min.
 8. DIELECTRIC STRENGTH: 1000V RMS min. @seo level.
 9. OPERATING TEMP.: -30°C to 85°C

REV.	ECN No.	DESCRIPTION	DATE	CHKD
A	12420	RELEASED FOR PRODUCTION	9/16/02	CJB

TITLE	SCALE	DATE	DR	DWG	REV
2004 WMSp-4 T2 A1 M6 RE (GOLD CONTACTS)	2:1	9/16/02	CJB	T201407	A

E-SWITCH®

THE INFORMATION CONTAINED IN THIS DOCUMENT IS PROPRIETARY TO E-SWITCH AND IS NOT TO BE COPIED OR TRANSMITTED