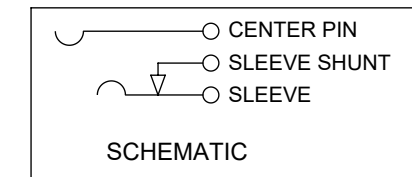
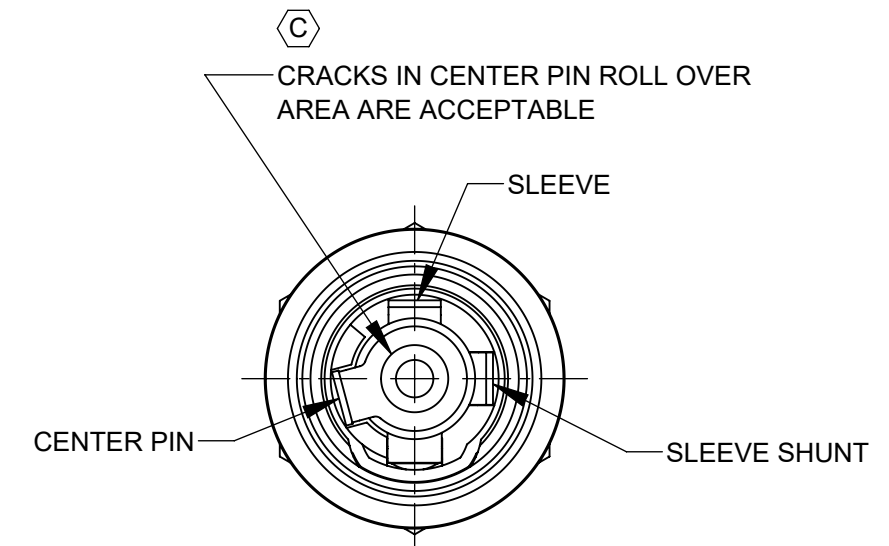
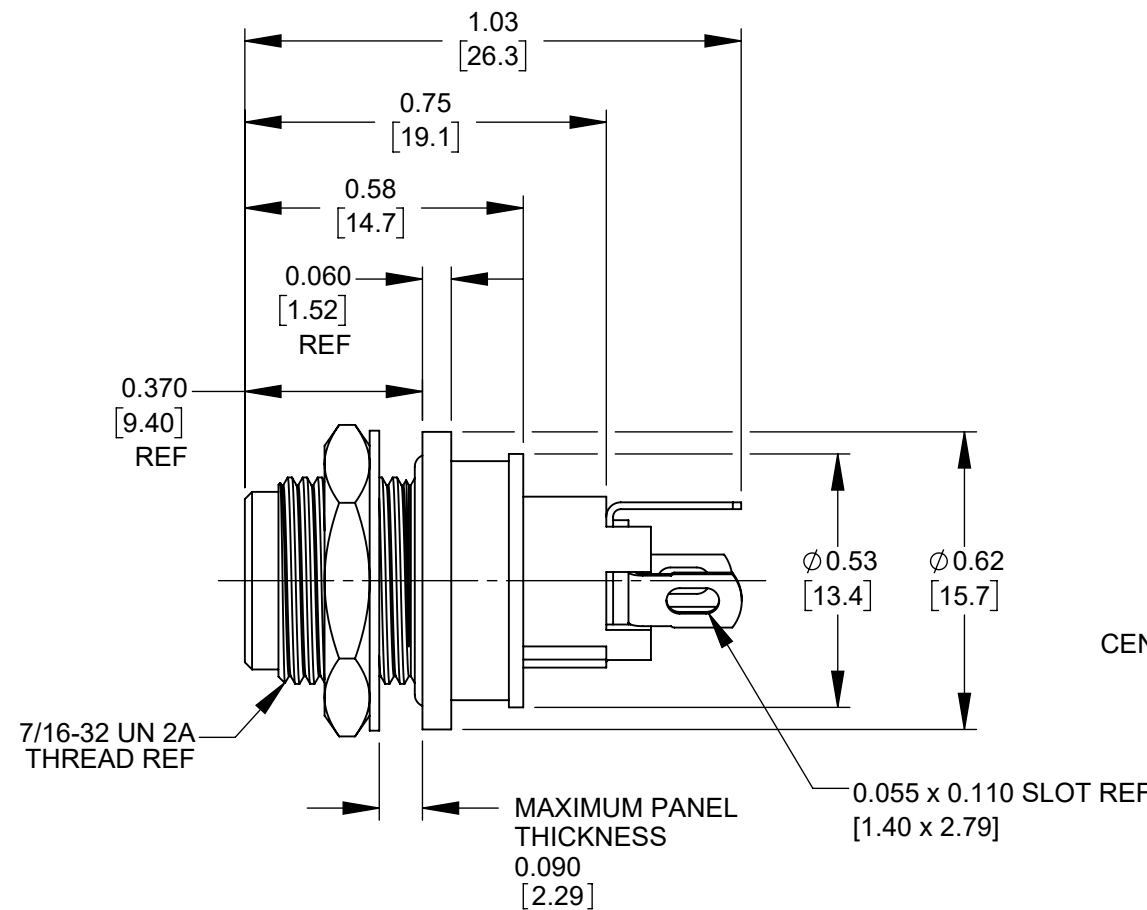
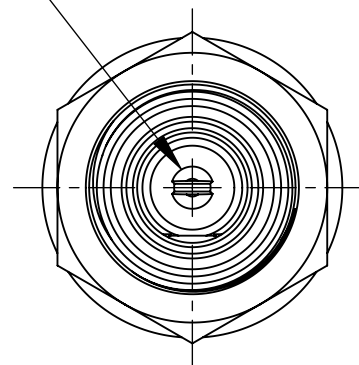


RECOMMENDED PANEL MTG HOLE

PART NUMBER	CENTER PIN Ø (JACK SIZE)	MATING POWER PLUG
L712ASH	0.10 (2.5 mm)	761KSH12, 761KSH15, 761KSH17
L722ASH	0.080 (2.0 mm)	S761KSH12, S761KSH15, S761KSH17



CENTER PIN/JACK SIZE
SEE TABLE



NOTES:

1. DIMENSIONS SHOWN FOR REFERENCE ONLY.
2. HEX NUT, FLAT WASHER, AND PANEL O-RING SUPPLIED UNASSEMBLED

3. MATERIAL:
 HOUSINGS, HEX NUT - COPPER ALLOY, NICKEL PLATED
 INSULATOR HOUSING - THERMOPLASTIC, BEIGE
 O-RINGS - THERMOPLASTIC RUBBER, LUBRICATED WITH SYNTHETIC GREASE
 TERMINAL INSULATORS - PHENOLIC
 FLAT WASHER - COPPER ALLOY, NICKEL PLATED
 PIN, SPRING, TERMINALS - COPPER ALLOY, SILVER PLATED

4. IT IS RECOMMENDED THAT THE JACK MOUNTING NUT BE TIGHTENED SNUG BY HAND BEFORE APPLYING A FINAL TIGHTENING TORQUE OF 8-10 LB-IN USING HAND TOOLS ONLY. POWER DRIVER OR IMPACT DRIVERS ARE NOT RECOMMENDED.

5. THIS PRODUCT IS RoHS COMPLIANT

CUSTOMER DRAWING

REV	ECO NUMBER	DATE	BY	APVD
C	28397	06/11/21	PC	TJK
B	28350	12/22/20	PC	TJK
A	27941	09/06/17	PC	TJK
REVISIONS				

UNLESS OTHERWISE SPECIFIED

1. ALL DIMENSIONS IN INCHES [mm]
- TWO PLACE DECIMALS ±0.02 [0.5]
- THREE PLACE DECIMALS ±0.005 [0.13]

DO NOT SCALE DRAWING

THIS DRAWING DESCRIBES A DESIGN CONSIDERED PROPRIETARY IN NATURE, DEVELOPED AND MANUFACTURED BY SWITCHCRAFT INC. AND IS RELEASED ON A CONFIDENTIAL BASIS FOR IDENTIFICATION PURPOSES ONLY.

SIZE	WIDTH	MULT	LBS/M	TEMPER
FINISH				
SPEC No.			MATERIAL SPEC No.	
FIRST USED ON		SCALE 2.5:1		
DATE DRAWN	BY	CHKD	APVD	
6/27/16	PNK	PNK	SRC	
		6/27/16	6/27/16	
NAME			PART No.	REV
SEALED HT POWER JACKS SOLDER LUG, RoHS			L712ASH, L722ASH	C

Switchcraft®

SHEET 1 OF 1