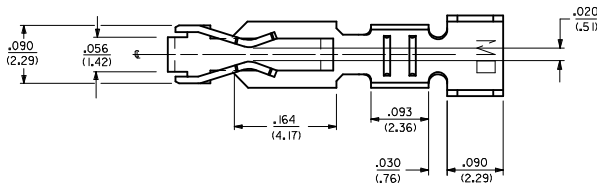
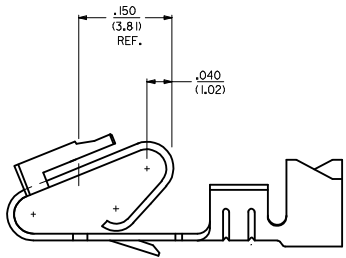


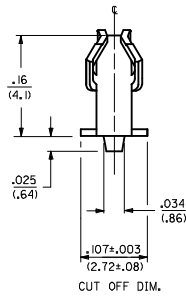
ALTERNATE GEOMETRY  
SEE NOTE 10



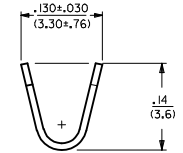
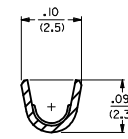
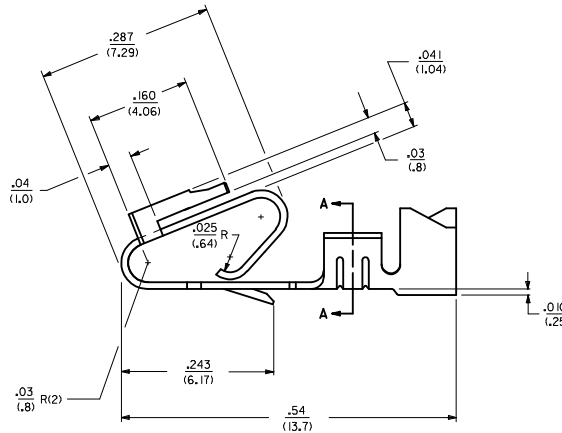
- NOTES:
- MATERIAL: SEE LEGEND
  - FINISH:
    - 909 - OVERALL HOT TIN DIP: .000100/(0.00254) MIN.
    - 154 - OVERALL TIN: .000100/(0.00254) MIN. OVER .000050/(0.00127) MIN. NICKEL.
    - 555 - SELECT HARD GOLD: .000015/(0.00038) MIN. OVERALL NICKEL: .000030/(0.00076) MIN.
    - 558 - SELECT HARD GOLD: .000030/(0.00076) MIN. OVERALL NICKEL: .000050/(0.00127) MIN. OVERALL HARD GOLD FLASH: .000002/(0.00005) MIN.
    - 561 - SELECT HARD GOLD: .000030/(0.00076) MIN. OVERALL NICKEL: .000050/(0.00127) MIN.
  - PRODUCT SPECIFICATION: PS-40-02
  - PACKAGING SPECIFICATION: CHAIN FORM: SEE PK-6838-001  
LOOSE FORM: SEE PK-2759-001
  - TERMINAL FOR USE IN HOUSING SERIES 6442 AND 41695.
  - SEE 7258 SERIES FOR THIS PART WITH CRIMP FOR 22-26 AWG. WIRE.
  - CRIMP FOR 18 TO 20 GA. WIRE WITH MAX. INSULATION DIA. OF .100/(2.79).  
STRIP LENGTH OF .125/100 / (3.18/2.54)
  - DIMENSIONS GIVEN ACROSS CENTERLINES ARE SYMMETRICAL ABOUT THOSE CENTERLINES WITHIN HALF THE TOLERANCE.
  - THIS PART CONFORMS TO CLASS B REQUIREMENTS OF COSMETIC SPECIFICATION PS-45499-002.
  - ALTERNATE GEOMETRY PRESENT ON SOME PART NUMBERS. SEE SHEET 2.
  - TEXT ON PART IS FOR REFERENCE ONLY. TEXT AND TEXT LOCATION MAY VARY DEPENDING ON PART NUMBER AND/OR TOOL.



SELECTIVE PLATING  
LOCATION



CUT OFF DIM.

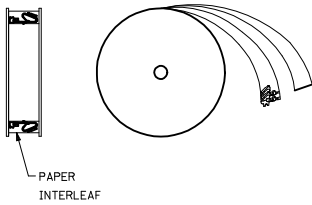


SECTION A-A

- LEGEND: 6838- ( )
- WINDING
    - A= PER DETAIL A
    - BLANK= PER DETAIL B
  - FORM
    - BLANK= CHAIN
    - L= LOOSE
  - PLATING
    - SEE NOTE 2

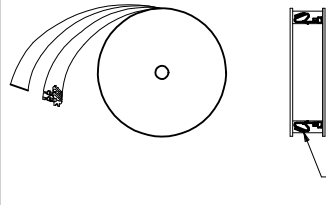
MATERIAL:  
(.27)/.0106 THK  
BLANK=BRASS  
A=PHOS BRONZE

WINDING DETAIL 'A'



PAPER  
INTERLEAF

WINDING DETAIL 'B'



PAPER  
INTERLEAF

<p>NOTE 11 ADDED DEC NO: UCP2018-0013 DRAWN BY: AS CHKD: APPR: SHWARG 2017/07/28 REV DESCRIPTION</p>	<p>QUALITY SYMBOLS</p> <p>▽=0 ▽=0 ▽=0</p>		<p>GENERAL TOLERANCES (UNLESS SPECIFIED)</p> <table border="1"> <thead> <tr> <th></th> <th>mm</th> <th>INCH</th> </tr> </thead> <tbody> <tr> <td>4 PLACES</td> <td>± .010</td> <td>± .010</td> </tr> <tr> <td>3 PLACES</td> <td>± .025</td> <td>± .015</td> </tr> <tr> <td>2 PLACES</td> <td>± .036</td> <td>± .015</td> </tr> <tr> <td>1 PLACE</td> <td>± .036</td> <td>± .015</td> </tr> </tbody> </table>			mm	INCH	4 PLACES	± .010	± .010	3 PLACES	± .025	± .015	2 PLACES	± .036	± .015	1 PLACE	± .036	± .015	<p>DIMENSION STYLE</p> <p>IN/MM</p>		<p>SCALE</p> <p>---</p>		<p>DESIGN UNITS</p> <p>INCH</p>		<p>THIRD ANGLE PROJECTION</p>	
		mm	INCH																								
	4 PLACES	± .010	± .010																								
	3 PLACES	± .025	± .015																								
2 PLACES	± .036	± .015																									
1 PLACE	± .036	± .015																									
<p>DRAFT WHERE APPLICABLE MUST REMAIN WITHIN DIMENSIONS</p>		<p>DRAWN BY DATE GUZIK 11/15/89</p> <p>CHECKED BY DATE PATEL 11/15/89</p> <p>APPROVED BY DATE LENZ 11/15/89</p>		<p>TITLE</p> <p>TRIFURCON TERMINAL CRIMP TYPE, .156 CENTERS 18 TO 20 AWG WIRE</p>		<p>MATERIAL NO.</p> <p>SEE CHART</p>		<p>DOCUMENT NO.</p> <p>SD-6838</p>		<p>SHEET NO.</p> <p>1 OF 2</p>																	
<p>THIS DRAWING CONTAINS INFORMATION THAT IS PROPRIETARY TO MOLEX INCORPORATED AND SHOULD NOT BE USED WITHOUT WRITTEN PERMISSION</p>																											

20 19 18 17 16 15 14 13 12 11 10 9 8 7 6 5 4 3 2 1

6838-(\*)\*\*

PART NO.	ENG. NO.	
08-50-0187	6838-(P909)	SEE NOTE 1
08-50-0189	6838-(P909)L	SEE NOTE 1
08-50-0275	6838-(P909)-A	

6838-A(\*)\*\*

PART NO.	ENG. NO.	
08-58-0187	6838-A(P558)	
08-58-0189	6838-A(P558)L	
08-52-0112	6838-A(P909)	SEE NOTE 1
08-52-0113	6838-A(P909)L	SEE NOTE 1
08-50-0024	6838-A(154)	
08-50-0251	6838-A(154)L	
08-58-0105	6838-A(P555)	
08-58-0106	6838-A(P555)L	
08-58-0110	6838-A(P56 I)	SEE NOTE 1
08-58-0111	6838-A(P56 I)L	SEE NOTE 1
08-58-0118	6838-A(56 I)	
08-58-0119	6838-A(56 I)L	

NOTES:

1. PART MANUFACTURED WITH ALTERNATE GEOMETRY. SEE SHEET 1.

<b>SEE SHEET 1</b> IEC NO: UCF2012-1821 DRAWN BY: DRW:MMSTROH 2012/01/04 CHECKED BY: CHY:KH/KIPPER 2012/01/05 APPR:FSM/TH 2012/02/02	QUALITY SYMBOLS ▽=0 ▽=0 ▽=0	GENERAL TOLERANCES (UNLESS SPECIFIED)		DIMENSION STYLE IN/MM	SCALE ---	DESIGN UNITS INCH	THIRD ANGLE PROJECTION	
		4 PLACES #--- #--- 3 PLACES #--- #--- 2 PLACES #--- #--- 1 PLACE #--- #---	mm INCH	DRAWN BY DATE GUZIK 11/15/89	TITLE TRIFURCON TERMINAL CRIMP TYPE, .156 CENTERS 18 TO 20 AWG WIRE			
		ANGULAR ±1/2°		CHECKED BY DATE PATEL 11/15/89	MOLEX INCORPORATED			
		DRAFT WHERE APPLICABLE MUST REMAIN WITHIN DIMENSIONS		APPROVED BY DATE LENZ 11/15/89	MATERIAL NO. SEE CHART	DOCUMENT NO. SD-6838	SHEET NO. 2 OF 2	
THIS DRAWING CONTAINS INFORMATION THAT IS PROPRIETARY TO MOLEX INCORPORATED AND SHOULD NOT BE USED WITHOUT WRITTEN PERMISSION								

19 18 17 16 15 14 13 12 11 10 9 8 7 6 5 4 3 2 1