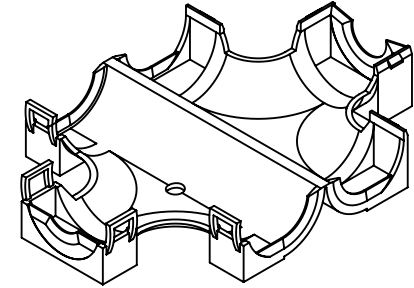
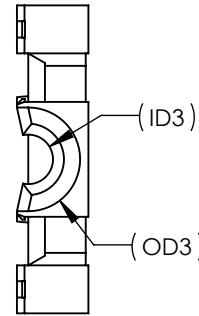
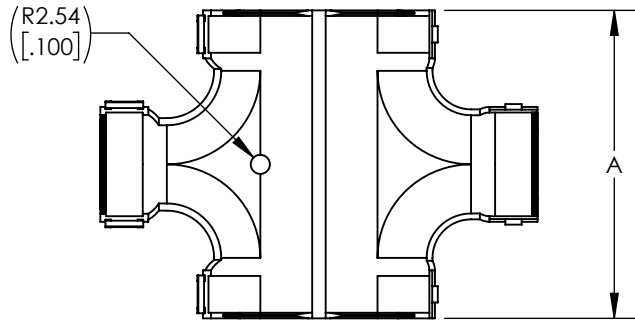
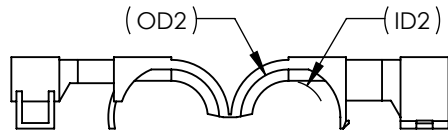
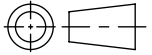
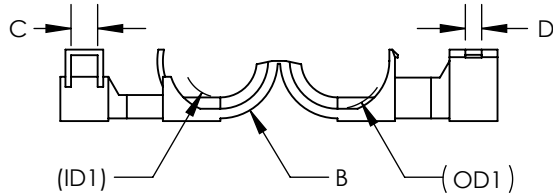


SW



ISOMETRIC VIEW



Revision level			Revision Record	Changed	Date	Approved	Date
Drawing	State	Part					
03.1	Design Release	-	SEE ECN# 015099	GAL	4/23/2019	KAC	4/23/2019

GLOBAL PART DESCRIPTION	GLOBAL PROJECT NUMBER	MATERIAL	COLOR	SUPERCEDES DCS PART NUMBER	FOR CONDUIT ID	CONDUIT DIAMETER						DIM "A"	DIM "B"	DIM "C"	DIM "D"
						(OD1)	(ID1)	(OD2)	(ID2)	(OD3)	(ID3)				
CTHC-T737-PP-BK	18-2007	PP	BLACK	08917321	8.89 & 19.05 [.350 & .750]	25.1 [0.99]	19.3 [0.76]	25.1 [0.99]	19.3 [0.76]	13.4 [0.57]	9.7 [0.38]	80.72 - 82.25 [3.178 - 3.238]	R 15.2 [0.60]	7.1 [.28]	4.32 [.170]
CTHC-T555-PP-BK	18-2008	PP	BLACK	08917624	12.52 [.493]	17.8 [0.70]	13.1 [0.52]	17.8 [0.70]	13.1 [0.52]	17.8 [0.70]	13.1 [0.52]	63.20 - 65.23 [2.488 - 2.568]	R 10.92 [0.430]	7.1 [.28]	4.32 [.170]
CTHC-T557-PP-BK	19-0341	PP	BLACK	08917284	12.52 & 19.05 [.493 & .750]	17.8 [0.70]	13.1 [0.52]	25.1 [0.99]	19.3 [0.76]	17.8 [0.70]	13.1 [0.52]	80.72 - 82.25 [3.178 - 3.238]	R 15.2 [0.60]	7.1 [.28]	4.32 [.170]
CTHC-T757-PP-BK	18-2009	PP	BLACK	08911868	12.52 & 19.05 [.493 & .750]	25.1 [0.99]	19.3 [0.76]	25.1 [0.99]	19.3 [0.76]	17.8 [0.70]	13.1 [0.52]	80.72 - 82.25 [3.178 - 3.238]	R 15.2 [0.60]	7.1 [.28]	4.32 [.170]
CTHC-T767-PP-BK	18-2010	PP	BLACK	12004449	15.88 & 19.05 [.625 & .750]	25.1 [0.99]	19.3 [0.76]	25.1 [0.99]	19.3 [0.76]	21.3 [0.84]	16.2 [0.64]	80.72 - 82.25 [3.178 - 3.238]	R 15.2 [0.60]	7.40 [.291]	4.32 [.170]
CTHC-T777-PP-BK	18-1951	PP	BLACK	N/A	19.05 [.750]	24.8 [0.97]	19.69 [0.775]	24.8 [0.97]	19.69 [0.775]	24.8 [0.97]	19.69 [0.775]	91.3 [3.59]	R 15.7 [0.62]	4.01 [.158]	2.79 [.110]

Material <b>SEE CHART</b>	Units: <b>millimeters</b>	The copyright of this drawing is reserved by HellermannTyton. It is issued on condition that it is not reproduced, copied, or disclosed to a third party, either wholly or in part, without the consent of HellermannTyton.	Drawn	CTF	08/23/2018	Article/Type-No	SEE CHART	Scale	1:2	
	Dimension without tolerances details to: .XXX = ±.013 .XX = ±.13 .X = ±.3 None = ±.8 ∠ = ±0.5° Dimension Formatted mm/[in]		Approved	KAC	08/23/2018	Title	<b>LOOM TUBING T FITTING</b>	Project Number	PRP 18-2007	
	<b>HellermannTyton</b> North America Email: corp@htamericas.com Web: www.hellermann.tyton.com			Drawing-No	18-2007-001-CSU		Production : Phase	Format	AH	
						Sheet	1/1			